

# ACL Laboratories Respiratory Virus Activity Report

Updated: April 24, 2024

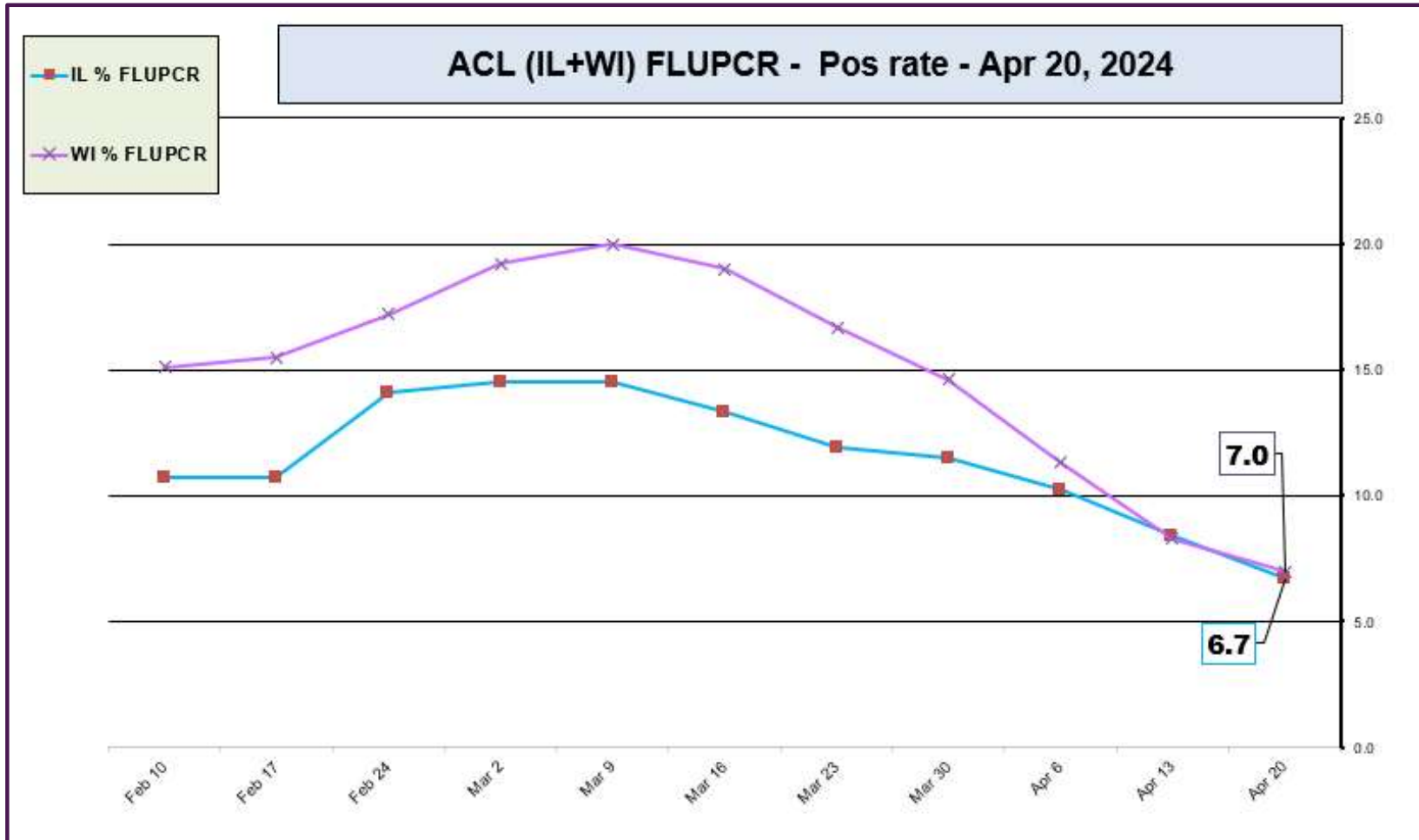


## RESPIRATORY PATHOGEN POSITIVITY RATE - MAY 2023 - APRIL 20, 2024

MONTH	FLU A UnSub	FLU A (H1N1)	2009 H1N1	FLU A H3N2	FLU B	RSV A/B	PARA 1	PARA 2	PARA 3	Para 4	COR 229E	COR NL63	COR OC43	COR HKU1	SARS-CoV-2	Human META	E/R	Adeno	BOCA	Chlamydo phila	Mycoplasma	B. pertussis	B. paraper	Legionella # Pos
APR 2024	3.1	0.0	0.5	0.4	5.3	1.1	0.0	0.0	5.0	0.0	1.0	0.5	1.1	0.5	3.1	9.9	12.2	3.3	N/A	0.0	0.2	0.0	0.0	0
MAR 2024	5.8	0.0	1.9	0.7	9.4	1.8	0.0	0.0	1.9	0.1	1.4	0.7	2.1	1.5	4.3	7.9	12.6	3.2	N/A	0.0	0.0	0.0	0.0	0
FEB 2024	8.4	0.0	3.0	1.1	6.0	3.3	0.0	0.0	0.5	0.1	1.3	0.2	4.8	1.5	8.7	3.0	12.7	4.1	N/A	0.0	0.2	0.2	0.1	0
JAN 2024	11.0	0.0	4.3	1.2	1.6	7.1	0.2	0.1	0.4	0.2	0.4	0.0	3.4	0.4	10.5	1.2	7.1	5.2	N/A	0.0	0.4	0.0	0.0	0
DEC 2023	11.2	0.0	2.8	1.2	0.8	10.3	0.9	0.3	0.0	0.5	0.2	0.1	2.7	0.4	14.4	0.8	12.7	5.6	N/A	0.0	0.6	0.0	0.3	0
NOV 2023	2.6	0.0	0.5	0.5	0.3	10.2	1.6	0.6	0.4	0.9	0.0	0.0	0.4	0.1	12.5	0.4	16.8	5.7	0.0	0.0	0.5	N/A	N/A	0
OCT 2023	0.6	0.0	0.2	0.0	0.1	4.0	2.4	0.8	0.3	1.0	0.1	0.1	0.2	0.0	8.9	0.5	19.1	2.6	0.3	0.0	0.4	N/A	N/A	2
SEP 2023	0.4	0.0	0.1	0.0	0.2	0.9	1.2	1.0	0.4	0.4	0.0	0.0	0.1	0.0	11.7	0.7	24.0	1.8	0.5	0.0	0.1	N/A	N/A	1
AUG 2023	0.5	0.0	0.4	0.0	0.2	0.5	0.4	1.4	1.6	0.5	0.0	0.0	0.7	0.0	12.4	2.9	13.3	2.3	0.4	0.0	0.0	N/A	N/A	0
JUL 2023	0.6	0.0	0.0	0.1	0.2	0.4	1.2	1.7	1.5	0.9	0.0	0.3	0.0	0.0	6.5	3.1	11.1	2.4	0.2	0.0	0.0	N/A	N/A	4
JUN 2023	0.5	0.0	0.1	0.0	0.5	0.3	0.8	1.6	5.2	0.0	0.1	0.1	0.1	0.0	4.6	0.5	11.3	3.5	0.3	0.0	0.0	N/A	N/A	3
MAY 2023	0.6	0.1	0.2	0.0	0.6	0.3	0.5	1.1	6.8	0.1	0.1	0.9	0.1	0.1	5.8	3.2	17.1	3.2	0.5	0.0	0.0	N/A	N/A	0

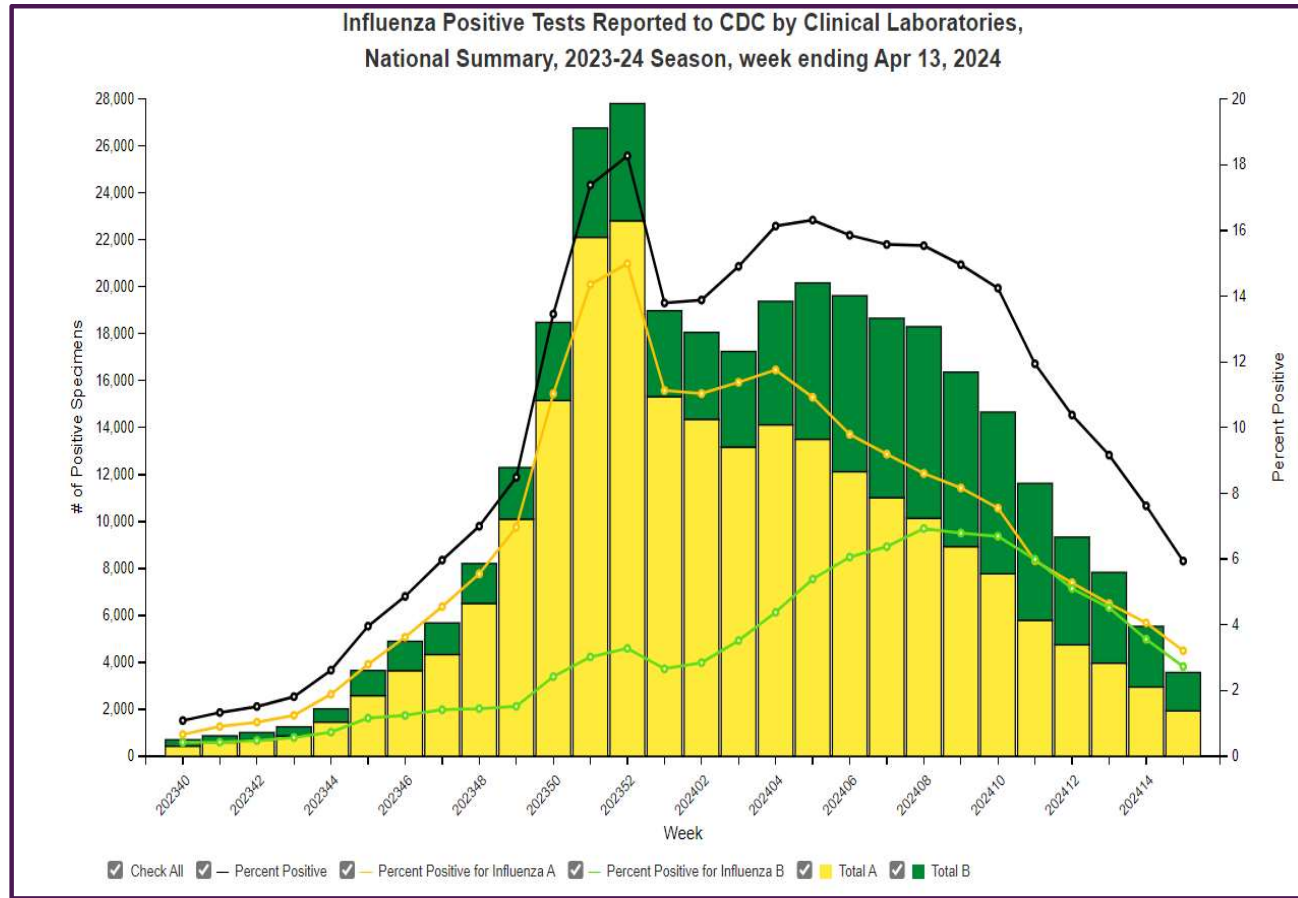
Data generated using: Respiratory Pathogen Panel (prior to 10/16/23), Rapid Respiratory Pathogen Panel (beginning 10/16/23), RAPID SARS-COV-2 BY PCR (LAB10644), COVID/FLU/RSV Panel (LAB10789) , Rapid COVID/FLU PCR Panel (LAB10889),

## ACL INFLUENZA positivity rate (Feb 10, 2024 – Apr 20, 2024)



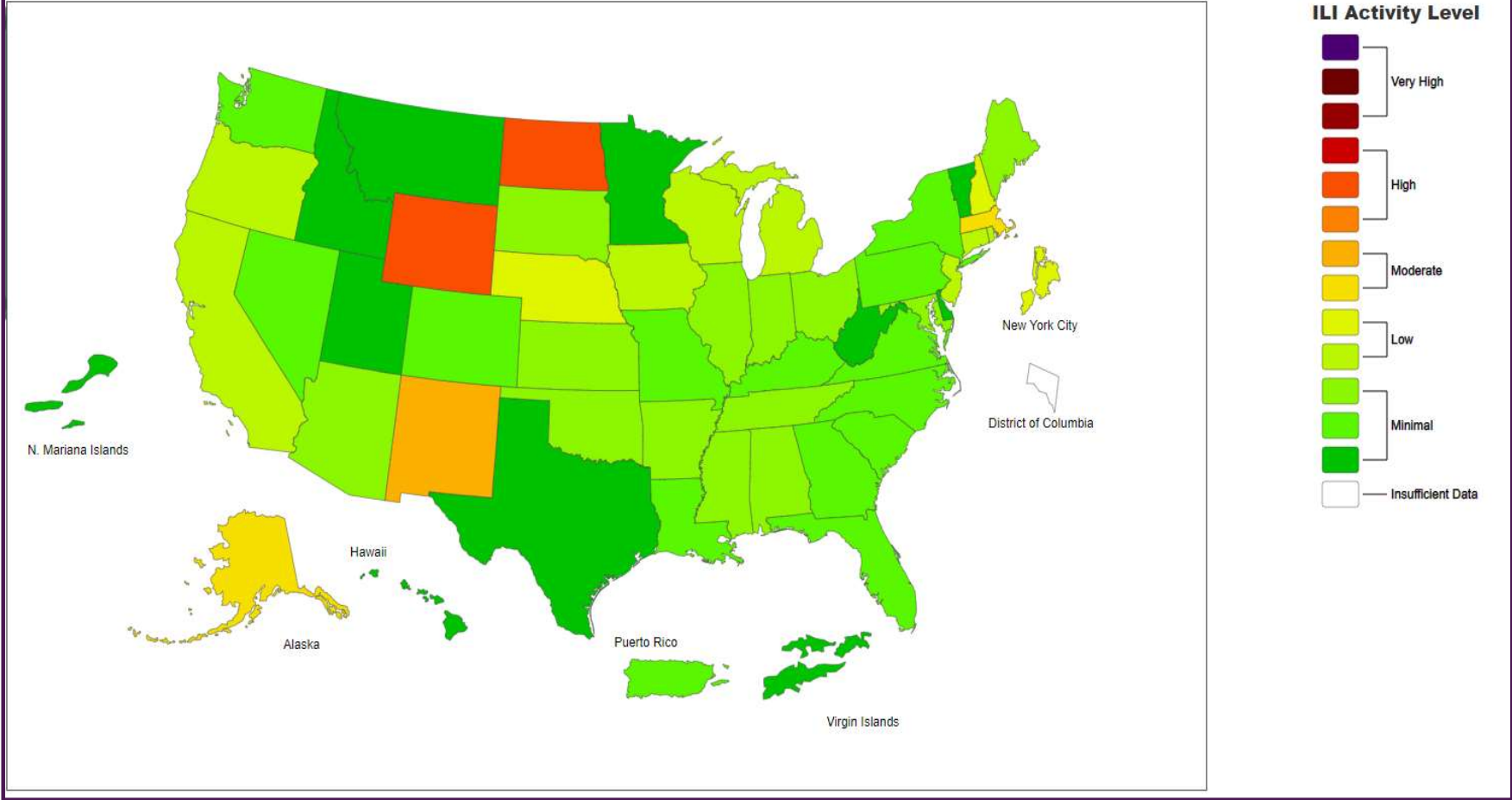
Data generated using: Rapid Respiratory Pathogen Panel (LAB9039), Influenza PCR, COVID/FLU/RSV Panel (LAB10789), COVID/Flu by PCR (LAB10889), and SARS-CoV-2/Influenza by PCR (LAB11071)

# US National Influenza Positivity Rates – Week 15 ending Apr 13, 2024

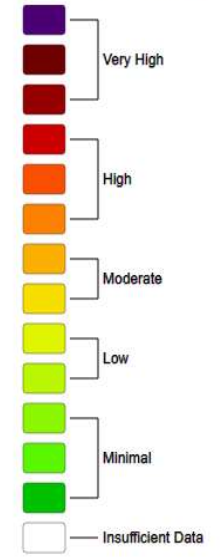


<https://www.cdc.gov/>

2023-24 Influenza Season Week 15 ending Apr 13, 2024

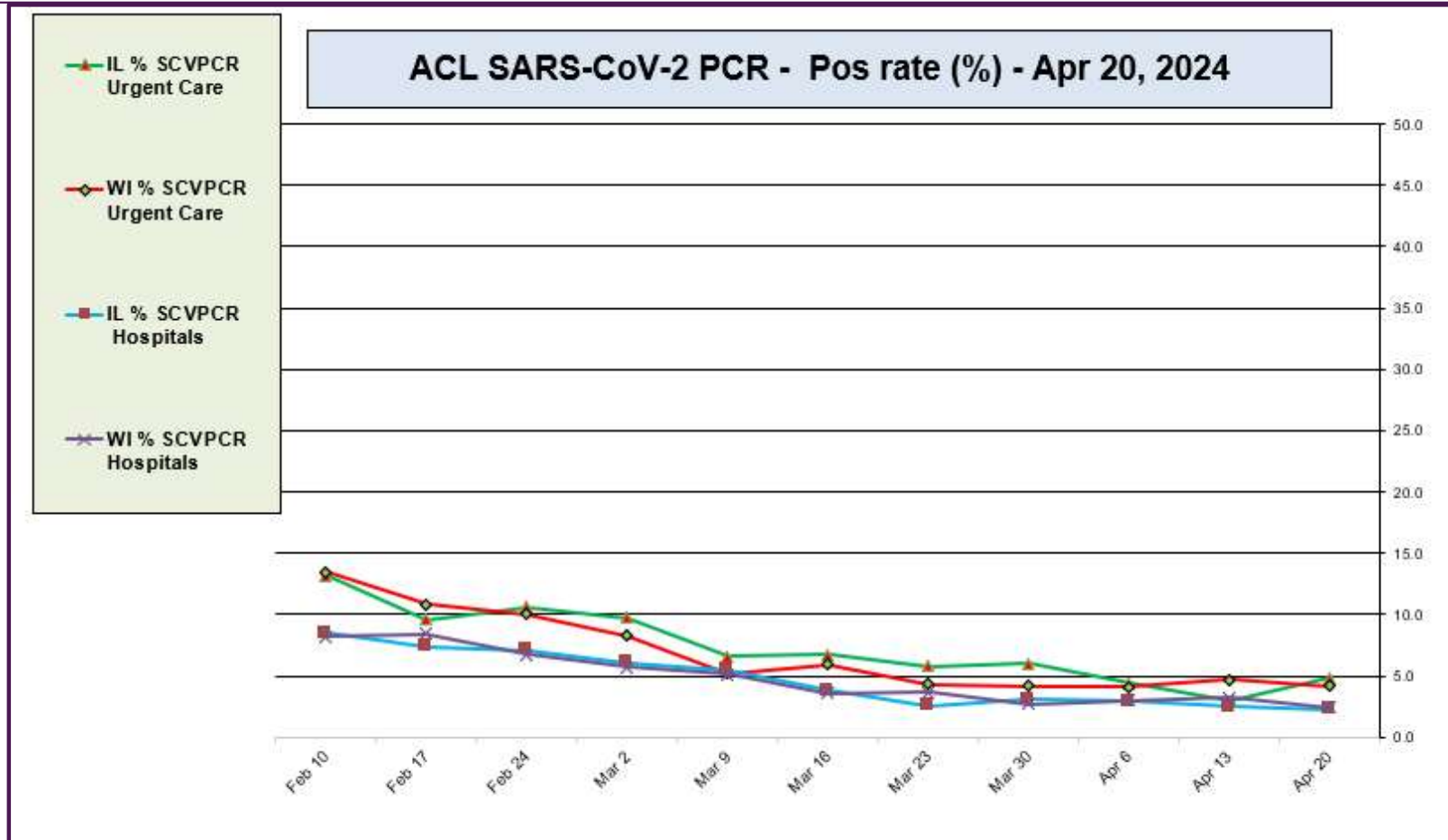


ILI Activity Level



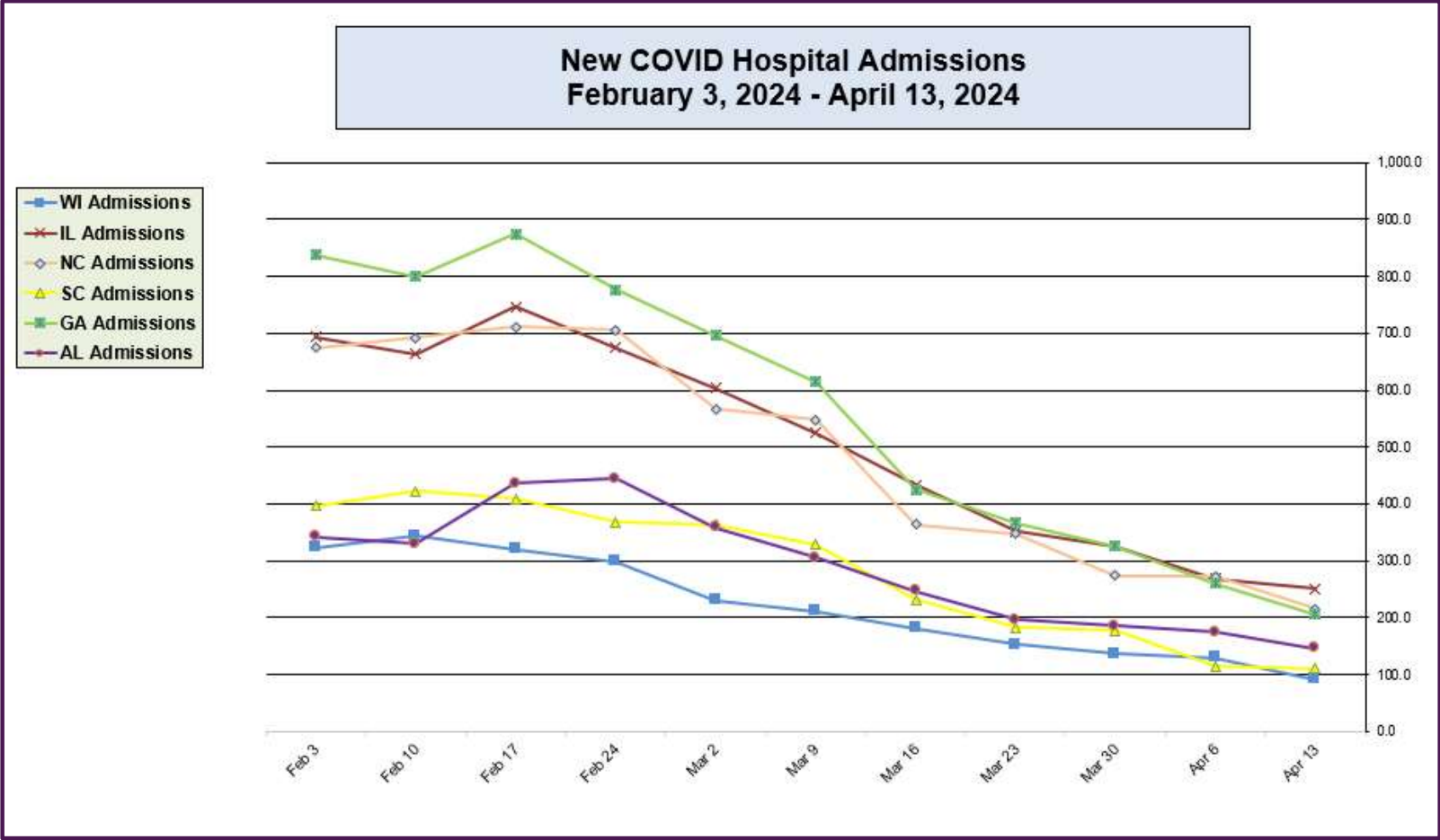
<https://www.cdc.gov/>

## ACL SARS-CoV-2 positivity rate (Feb 10, 2024 – Apr 20, 2024)



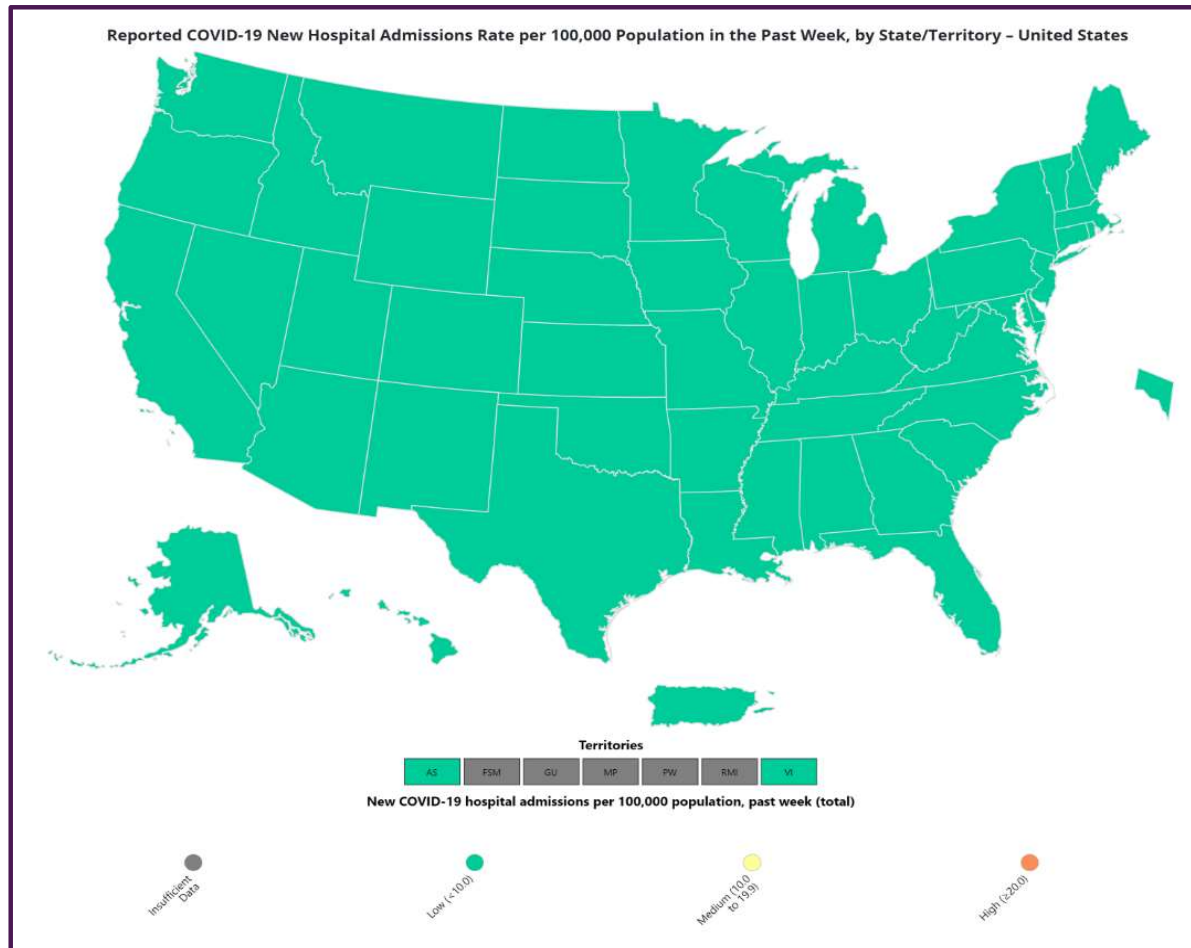
Data generated using: RAPID SARS-COV-2 BY PCR (LAB10644), COVID/FLU/RSV Panel (LAB10789) , prior to 9/17 COVID-19 ANTIGEN TEST (SOFIA) (LAB10715) , post 9/17 LAB10644 performed at WI and IL urgent cares sites, and Rapid Respiratory Pathogen Panel (LAB9039)

# New COVID Hospital Admissions from CDC Data (Feb 3, 2024 – April 13, 2024)



Data generated from: [https://covid.cdc.gov/covid-data-tracker/#maps\\_new-admissions-rate-state](https://covid.cdc.gov/covid-data-tracker/#maps_new-admissions-rate-state)

# COVID Hospital Admission Rates Per 100,000 from CDC Data (Week Ending Apr 13, 2024)

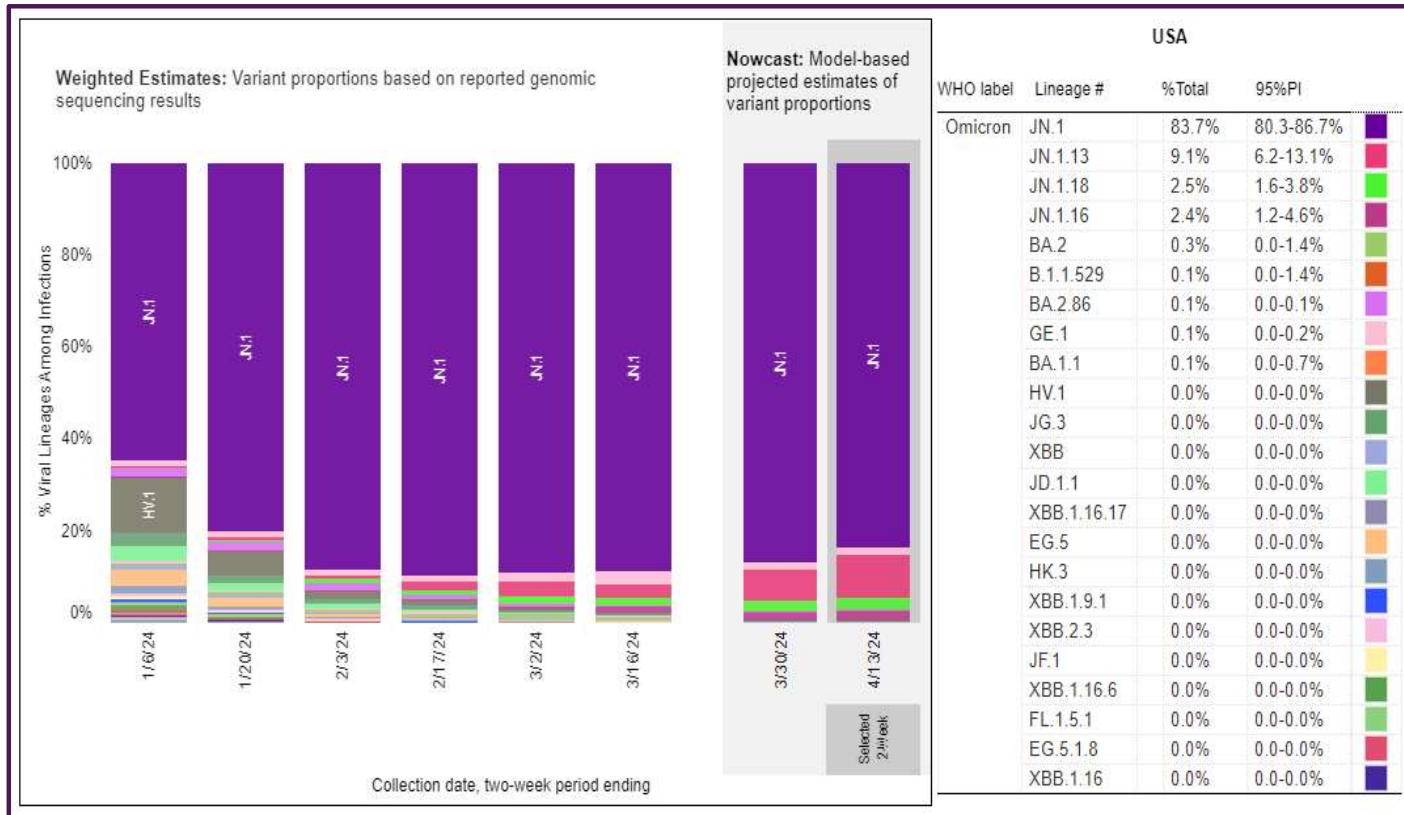


Data generated from: [https://covid.cdc.gov/covid-data-tracker/#maps\\_new-admissions-rate-state](https://covid.cdc.gov/covid-data-tracker/#maps_new-admissions-rate-state)



# April 13, 2024 – TOP 5 SARS-CoV-2 Strains circulating in the Midwest by Nowcast modeling

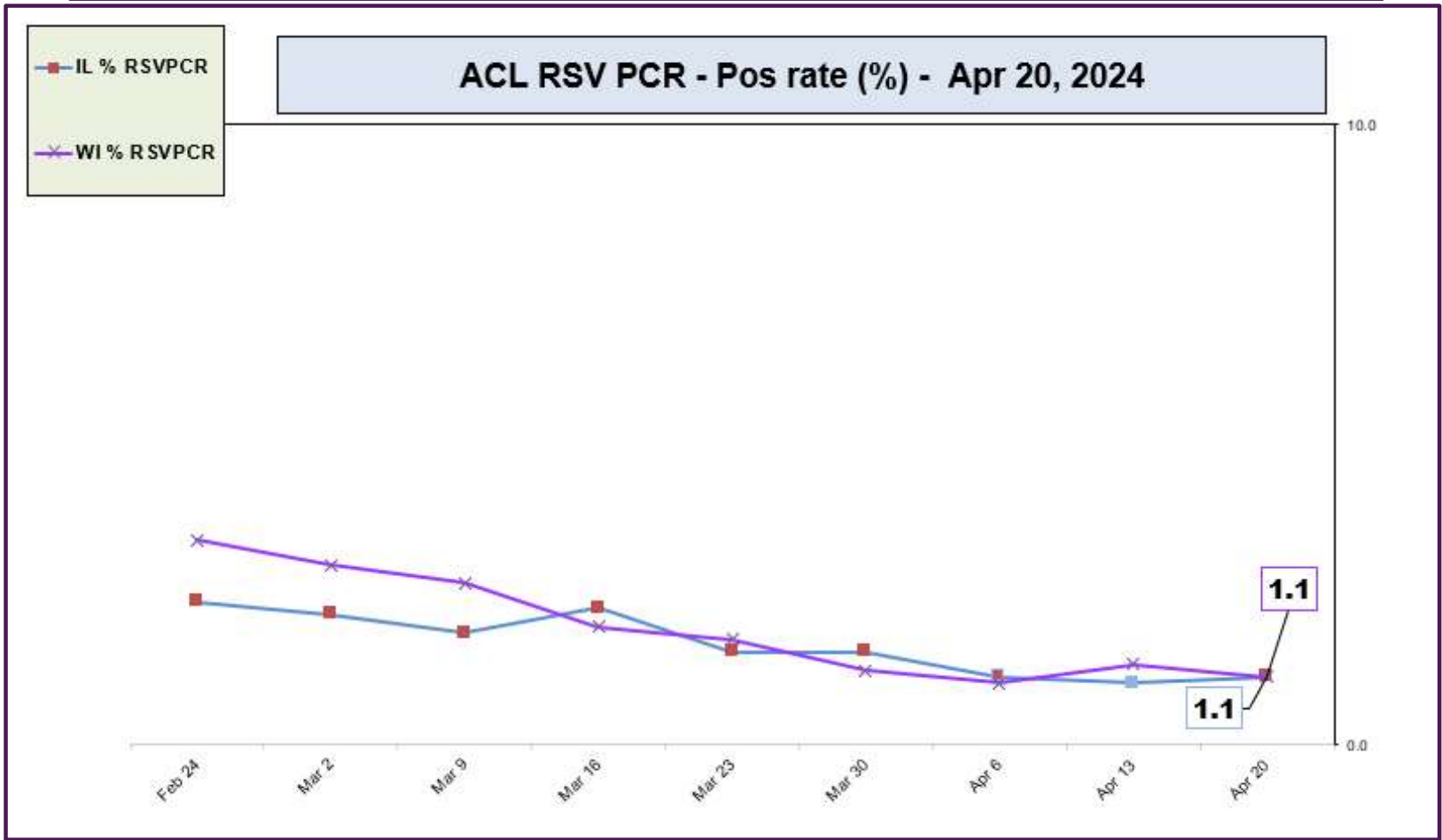
(Omicron JN.1 83.7% ↓, JN.1.13 9.1% ↓, JN.1.18 2.5% ↑, JN.1.16 2.4% ↑, BA.2 – 0.3% ↑)



\*\* CDC uses **Nowcast** model that estimates more recent proportions of circulating variants (actual sequencing data is typically delayed for 2 weeks).

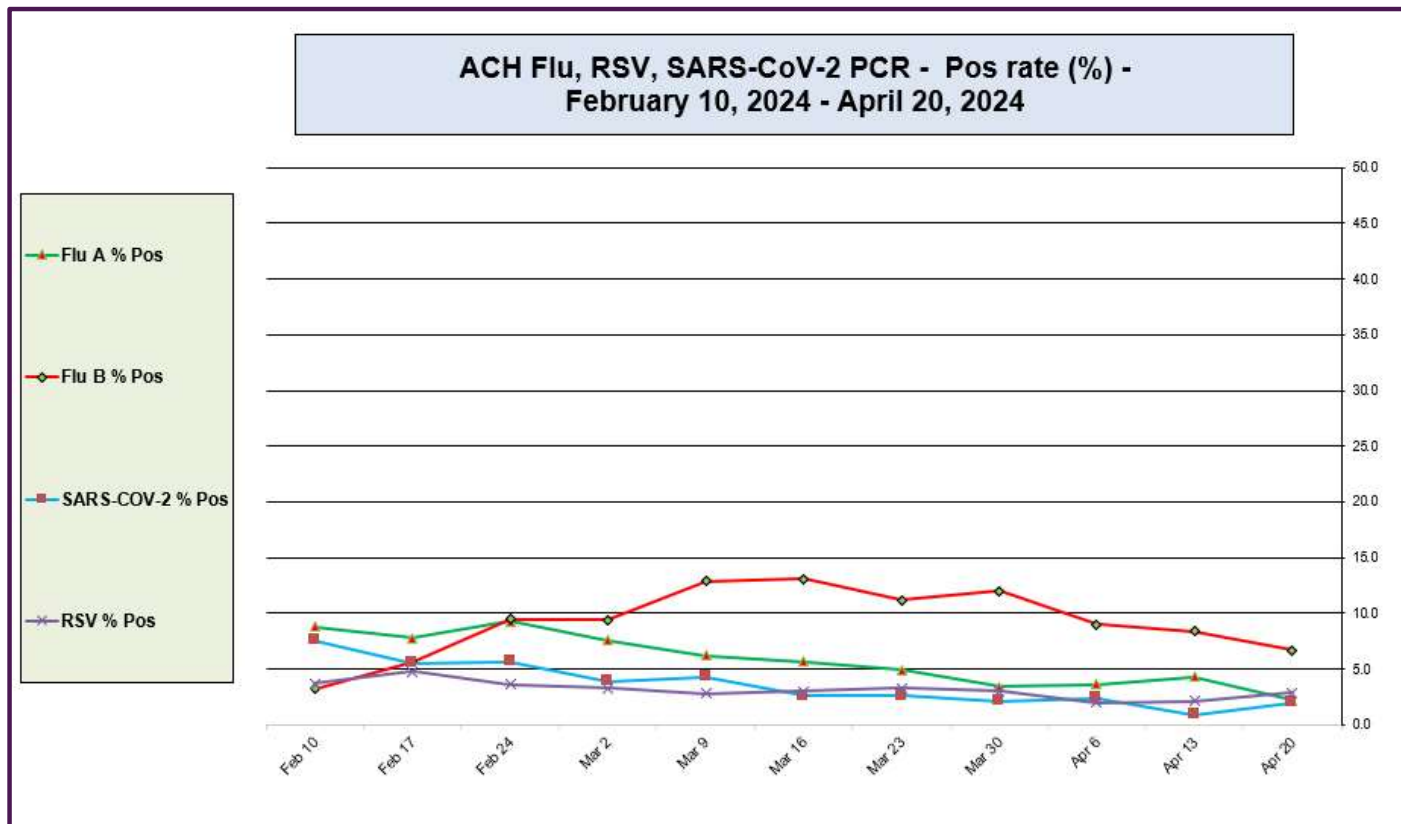
<https://www.cdc.gov/>

# ACL RSV PCR positivity rate (Feb 24, 2024 – Apr 20, 2024)



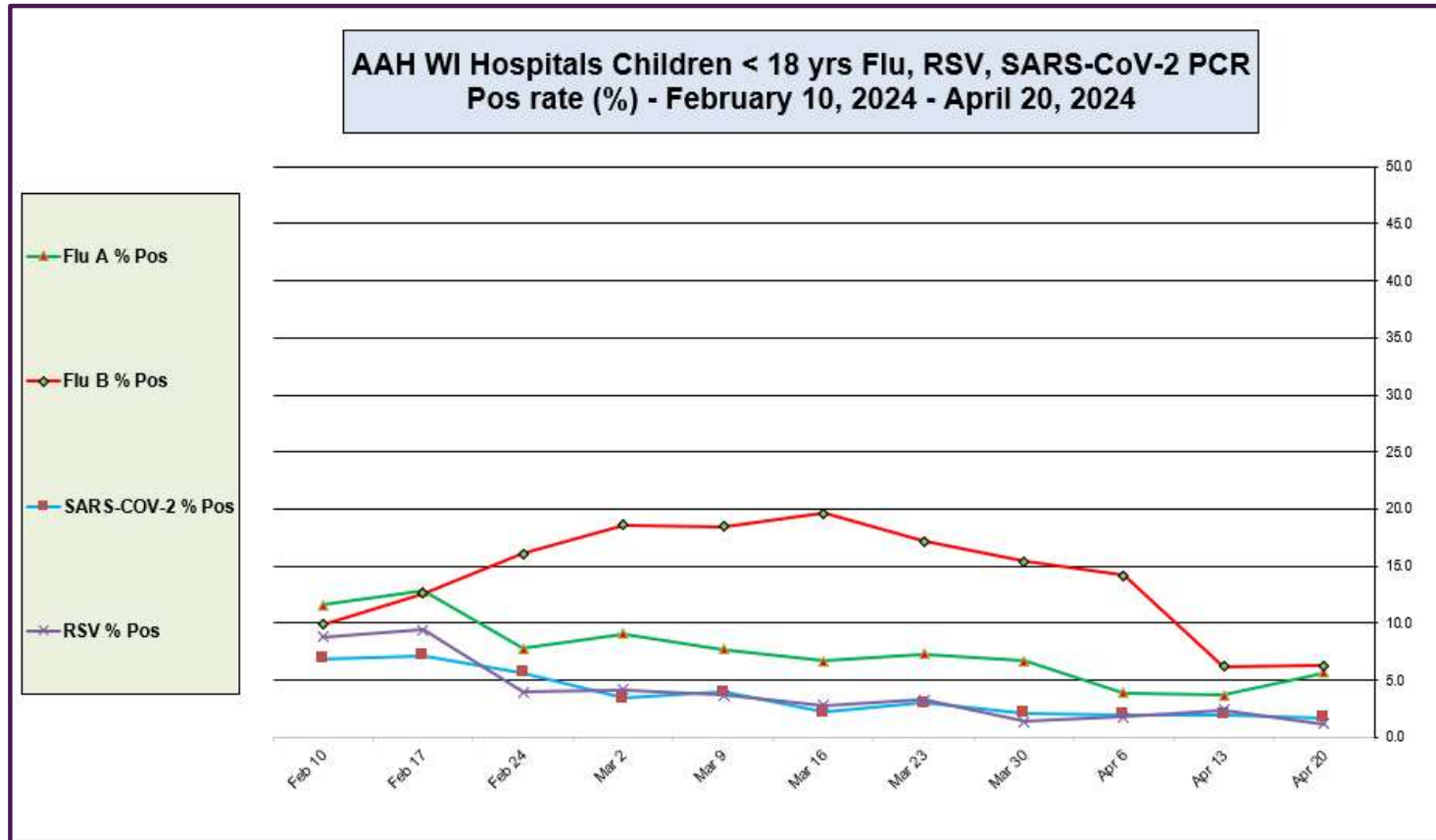
Data generated using: Rapid Respiratory Pathogen Panel (LAB9039) and COVID/FLU/RSV Panel (LAB10789)

## Advocate Children's Hospital Influenza A, Influenza B, RSV, and SARS-CoV-2 PCR Positivity rates (Feb 10, 2024 – Apr 20, 2024)



**Data generated using:** Respiratory Pathogen Panel (LAB9955), Rapid Respiratory Pathogen Panel (LAB9039), Rapid SARS-CoV-2 by PCR (LAB10644), COVID/FLU by PCR (LAB10889), COVID/FLU/RSV Panel (LAB10789), 2019 Novel Coronavirus (SARS-CoV-2) LAB10635

# AAH WI Hospitals (patients < 18 yrs old) Influenza A, Influenza B, RSV, and SARS-CoV-2 PCR Positivity rates (Feb 10, 2024 – Apr 20, 2024)



Data generated using: Respiratory Pathogen Panel (LAB9955), Rapid Respiratory Pathogen Panel (LAB9039), Rapid SARS-CoV-2 by PCR (LAB10644), COVID/FLU by PCR (LAB10889), COVID/FLU/RSV Panel (LAB10789), 2019 Novel Coronavirus (SARS-CoV-2) LAB10635