

ACL Laboratories COVID-19 and Influenza Activity Report

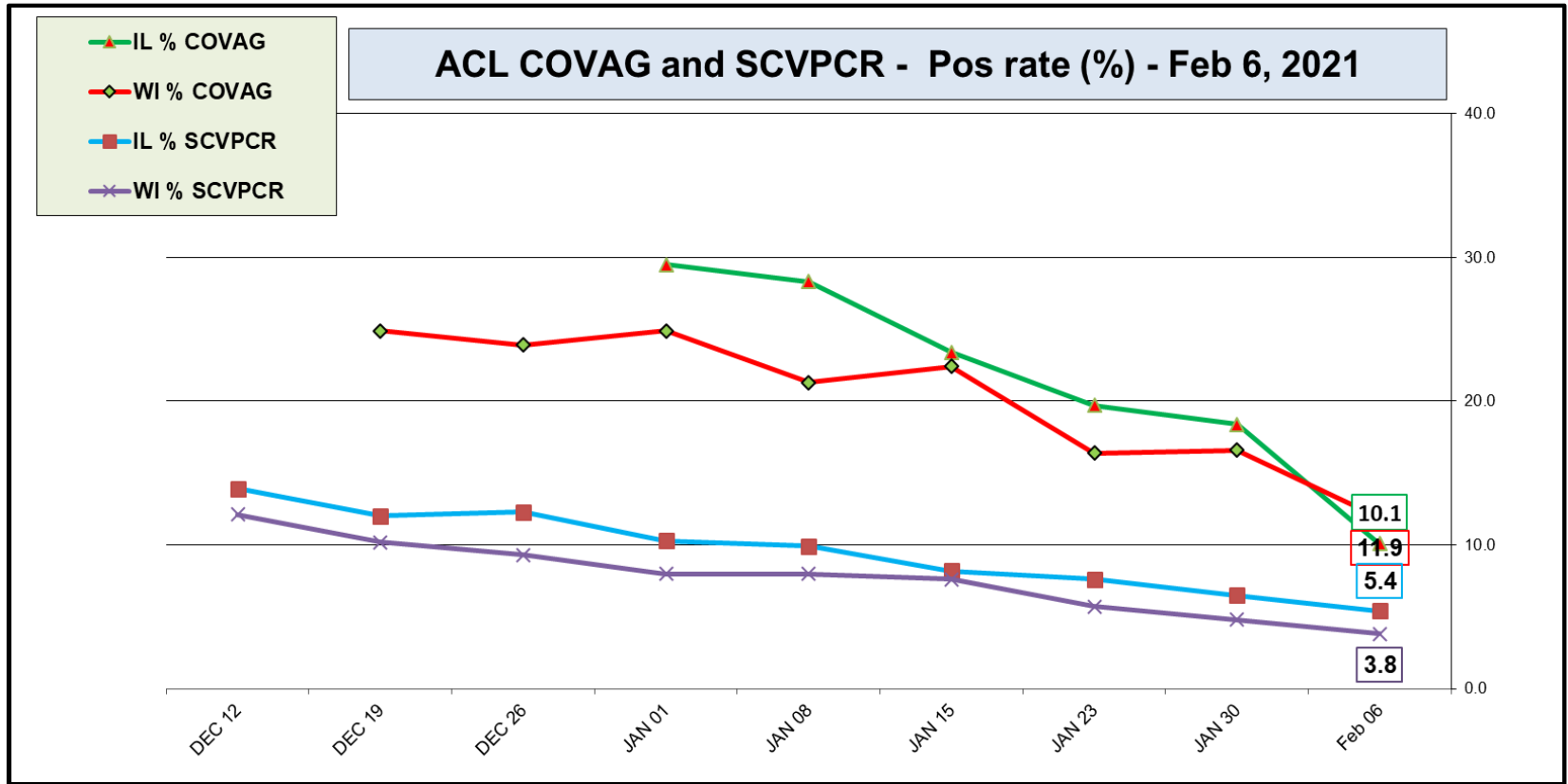
Updated: February 06, 2021



Respiratory Pathogens - Feb 6, 2021

Week	InfA-H1	InfA-H3	2009 H1N1	Inf B	RSV	Para-influenza	EV/Rhino	Meta pneumo	Adeno virus	Corona viruses	Bocca	Myc. pneumo	Chlam. pneumo.	Leg. pneumo.	BP / BPP	Total Pos	POS FLU	Total	ACL RPPNL	US %FLU	IL/WI %FLU	ACL FLUPCR
Feb 7	0	0	0	0	0	0	10	1	0	1	1	0	0	0	0	12	0	143	0.0	n/a	n/a	0.0
Jan 30	0	0	0	0	0	0	14	0	0	0	1	0	0	0	0	15	0	136	0.0	0.1	0.1	0.0
Jan 23	0	0	0	0	0	0	7	0	1	0	0	0	0	0	0	8	0	124	0.0	0.3	0.1	0.0
Jan 15	0	0	0	0	0	0	17	0	2	0	0	0	0	0	0	19	0	126	0.0	0.1	0.1	0.0
Jan 8	0	0	0	0	0	0	6	0	1	0	1	0	0	0	0	18	0	113	0.0	0.4	0.1	0.0
Jan 1	0	0	0	0	0	0	16	0	2	0	0	0	0	0	0	18	0	112	0.0	0.2	0.1	0.0
Dec 26	0	0	0	0	0	0	6	0	1	0	2	0	0	1	0	10	0	105	0.0	0.3	0.2	0.0
Dec 19	0	0	0	0	0	0	13	0	1	0	1	0	0	0	0	15	0	144	0.0	0.1	0.1	0.0
Dec 12	0	0	0	0	0	0	9	1	0	0	0	0	0	0	0	10	0	113	0.0	0.3	0.1	0.0
Dec 5	0	0	0	0	0	0	10	0	2	0	0	0	0	0	0	12	0	146	0.0	0.2	0.1	0.0
Nov 28	0	0	0	0	0	0	10	0	1	0	2	0	0	0	0	13	0	161	0.0	0.1	0.1	0.0
Nov 21	0	0	0	0	0	0	13	1	0	0	0	0	0	0	0	14	0	140	0.0	0.2	0.1	0.0
Nov 14	0	0	0	0	0	0	7	0	0	1	2	0	0	0	0	0	0	158	0.0	0.2	0.1	0.0

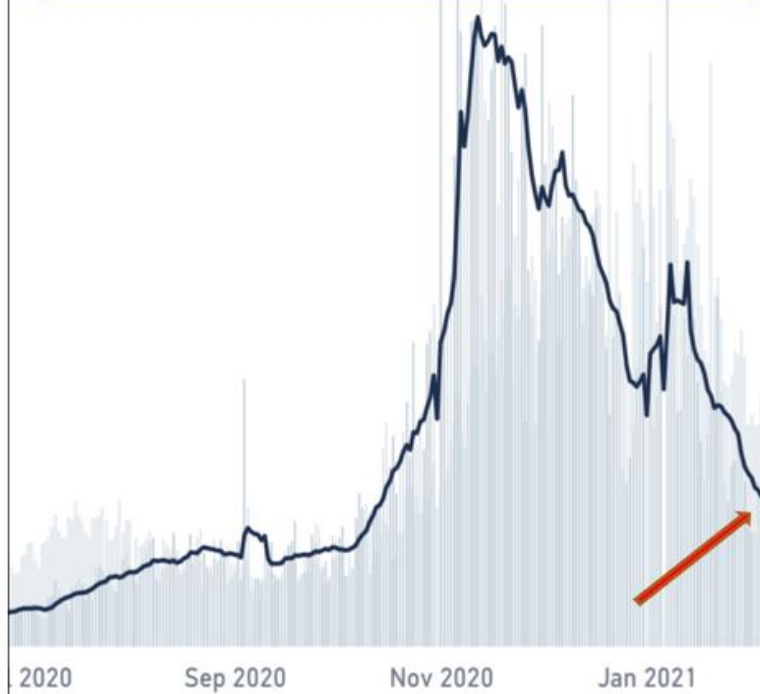
SARS-COV-2					RSV - no activity				Influenza - no activity			
Week	IL % SCVPCR	WI % SCVPCR	IL % COVAG	WI % COVAG	IL % RSVPCR	WI % RSVPCR	IL % RSVAG	WI % RSVAG	IL % FLUPCR	WI % FLUPCR	IL % FLUAG	WI % FLUAG
Feb 06	5.4	3.8	10.1	11.9	0	0	0	0	0	0	n/a	1
JAN 30	6.5	4.8	18.4	16.6	0	0	0	0	0	0	n/a	0
JAN 23	7.6	5.7	19.7	16.4	0	0	0	0	0	0	n/a	1
JAN 15	8.2	7.6	23.4	22.4	0	0	0	0	0	0	n/a	5
JAN 08	9.9	8.0	28.3	21.3	0	0	0	0	0	0	n/a	0
JAN 01	10.3	8.0	29.5	24.9	0	0	0	0	0	0	n/a	2
DEC 26	12.3	9.3	25.1	23.9	0	0	0	0	0	0	n/a	0
DEC 19	12.0	10.2	27.1	24.9	0	0	0	0	0	0	n/a	0
DEC 12	13.9	12.1	22.5	25.4	0	0	0	0	0	0	n/a	0
DEC 5	15.4	15.4	30.3	30.5	0	0	0	0	0	0	n/a	0
NOV 28	17.7	16.0	30.5	30.5	0	0	0	0	0	0	n/a	0
NOV 21	16.5	14.0	25.1	24.5	0	0	0	0	0	0	n/a	2



COVAG Antigen rapid test – is performed at **Urgent Care** sites.

SCVPCR - Rapid PCR - test is performed using Cepheid PCR at AAH **Hospital** sites.

CDC- IL State Covid Cases Feb 06, 2021



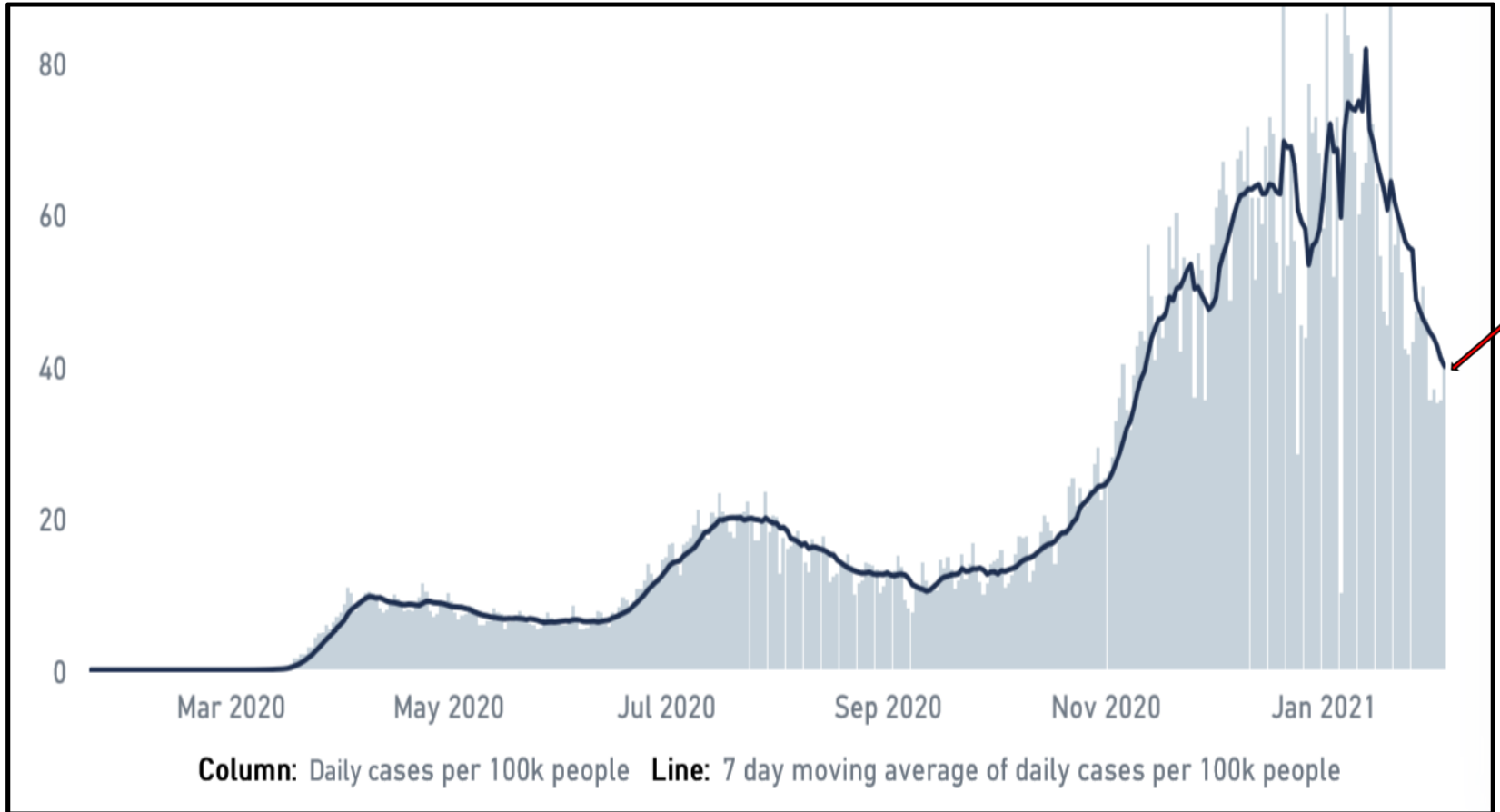
Line: 7 day moving average of daily cases per 100k people

CDC- WI State Covid Cases Feb 06, 2021



Line: 7 day moving average of daily cases per 100k people

Feb 06, 2021 - daily COVID-19 cases in US - CDC



COVID-19 Vaccinations in the United States

Overall US COVID-19 Vaccine Delivery and Administration; Maps, charts, and data provided by the CDC, updated daily by 8 pm ET[†]

Total Doses Delivered

59,307,800

Total Doses Administered

42,417,617

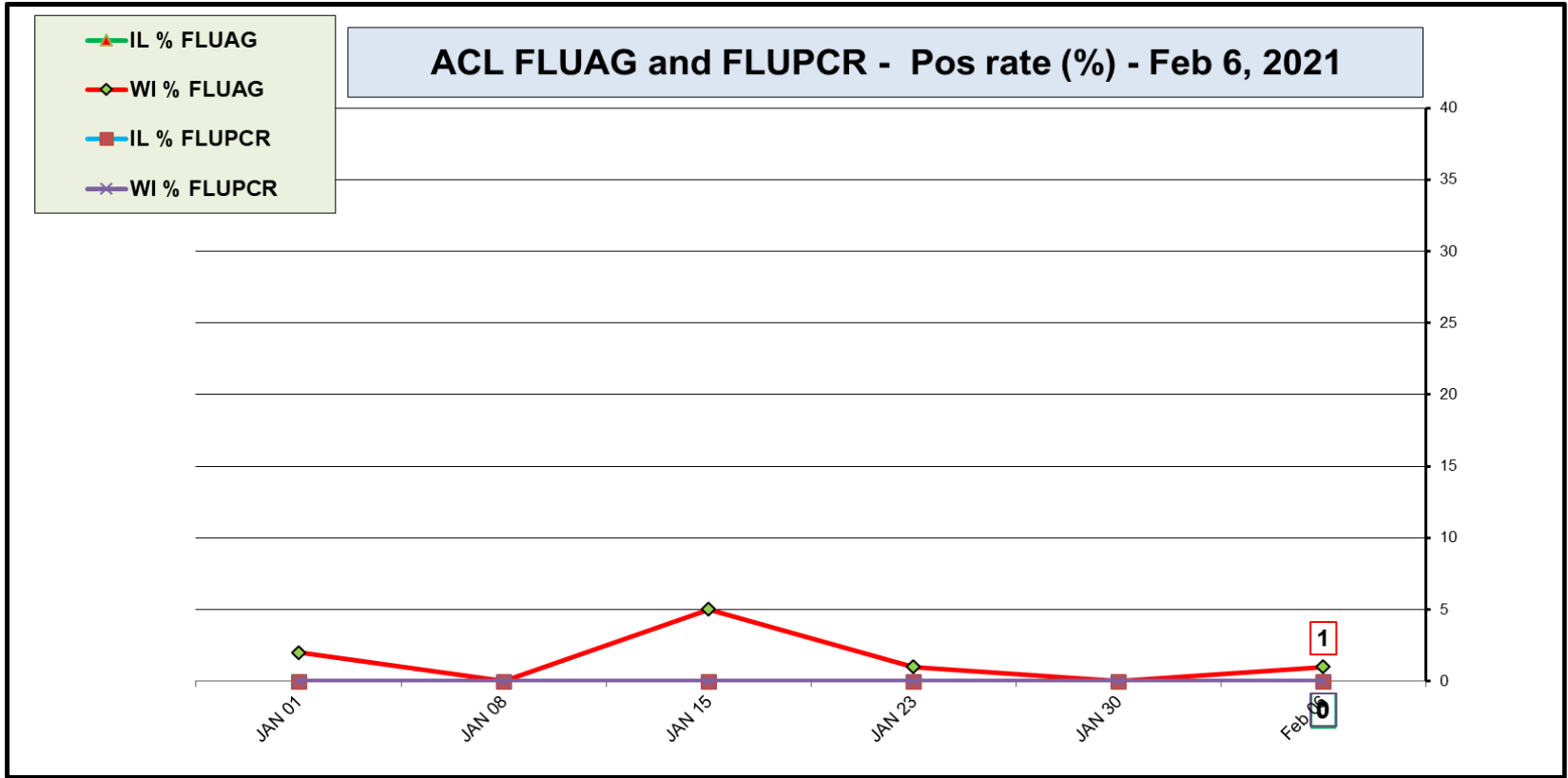
Number of People Receiving 1 or
More Doses

32,340,146

Number of People Receiving 2
Doses

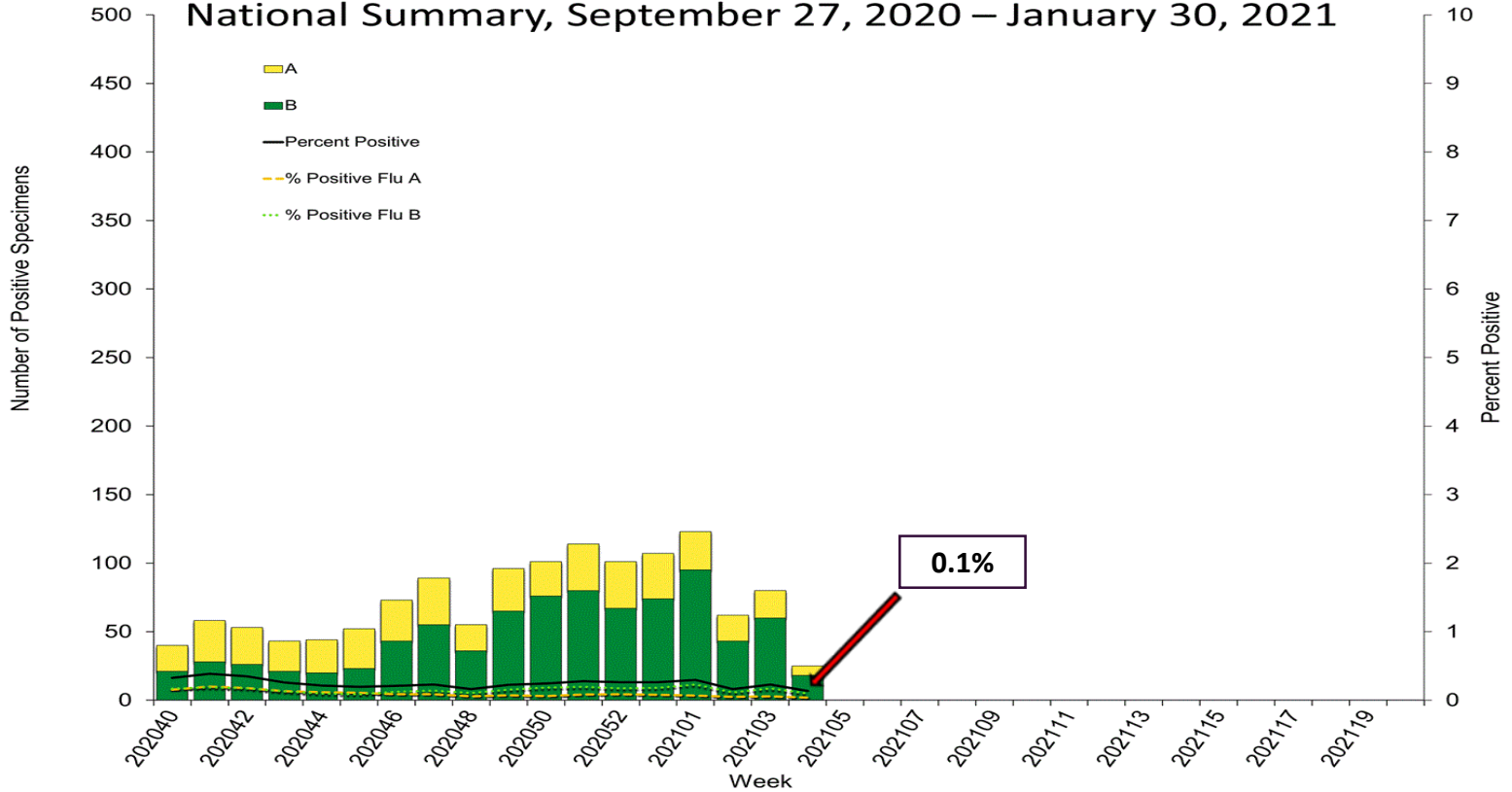
9,518,015

CDC | Data as of: Feb 08 2021 6:00am ET | Posted: Feb 8 2021 12:26PM ET



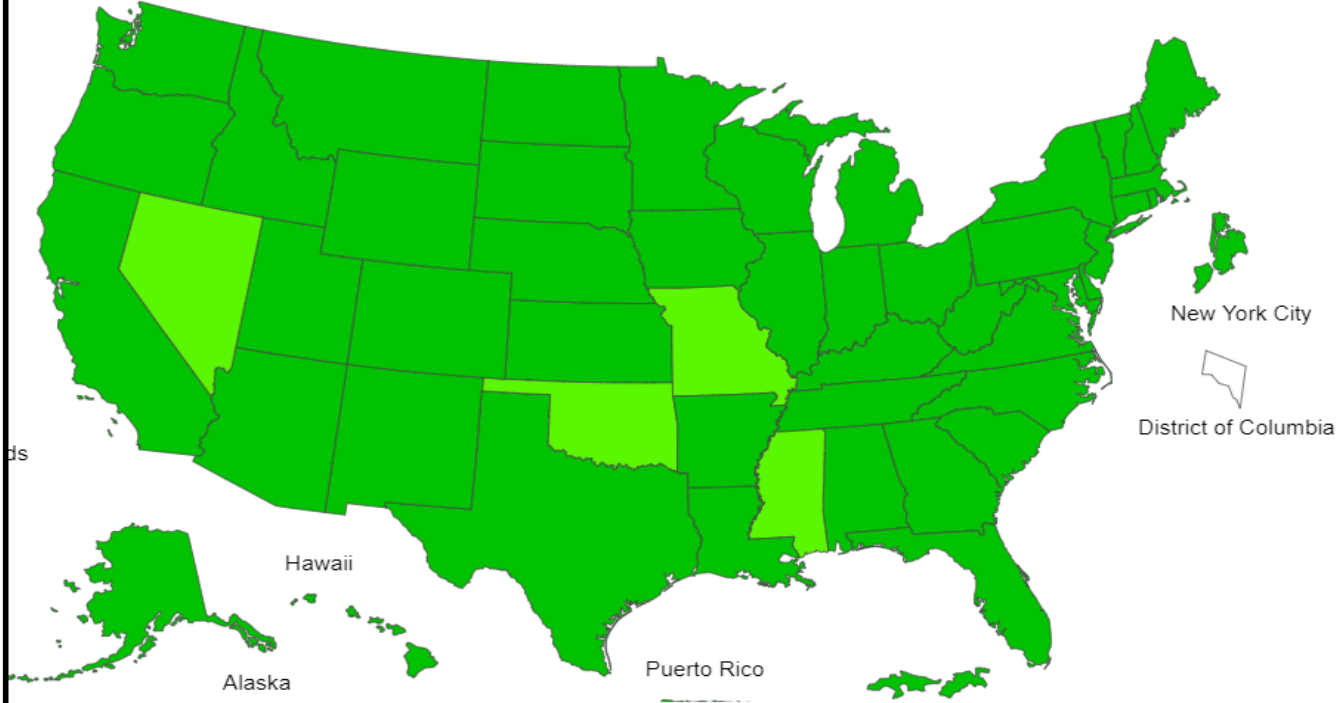
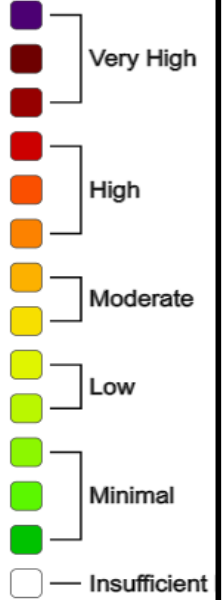
FLUAG Antigen rapid test – 1 sample Positive for Flu B detected at Urgent Care WI.
FLUPCR - Rapid PCR - test is performed using Cepheid PCR at AAH Hospital sites.

Influenza Positive Tests Reported to CDC by U.S. Clinical Laboratories, National Summary, September 27, 2020 – January 30, 2021



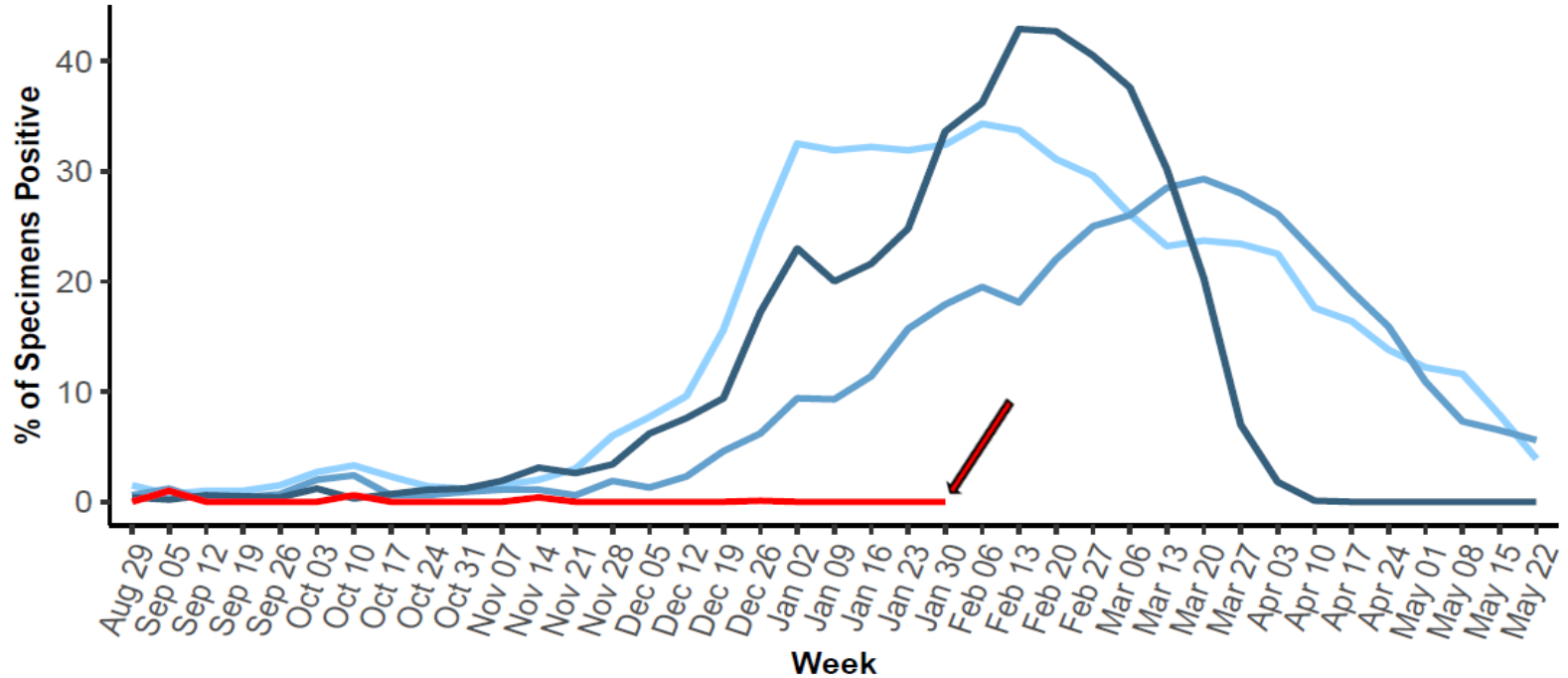
2020-21 Influenza Season Week 4 ending Jan 30, 2021

ILI Activity Level

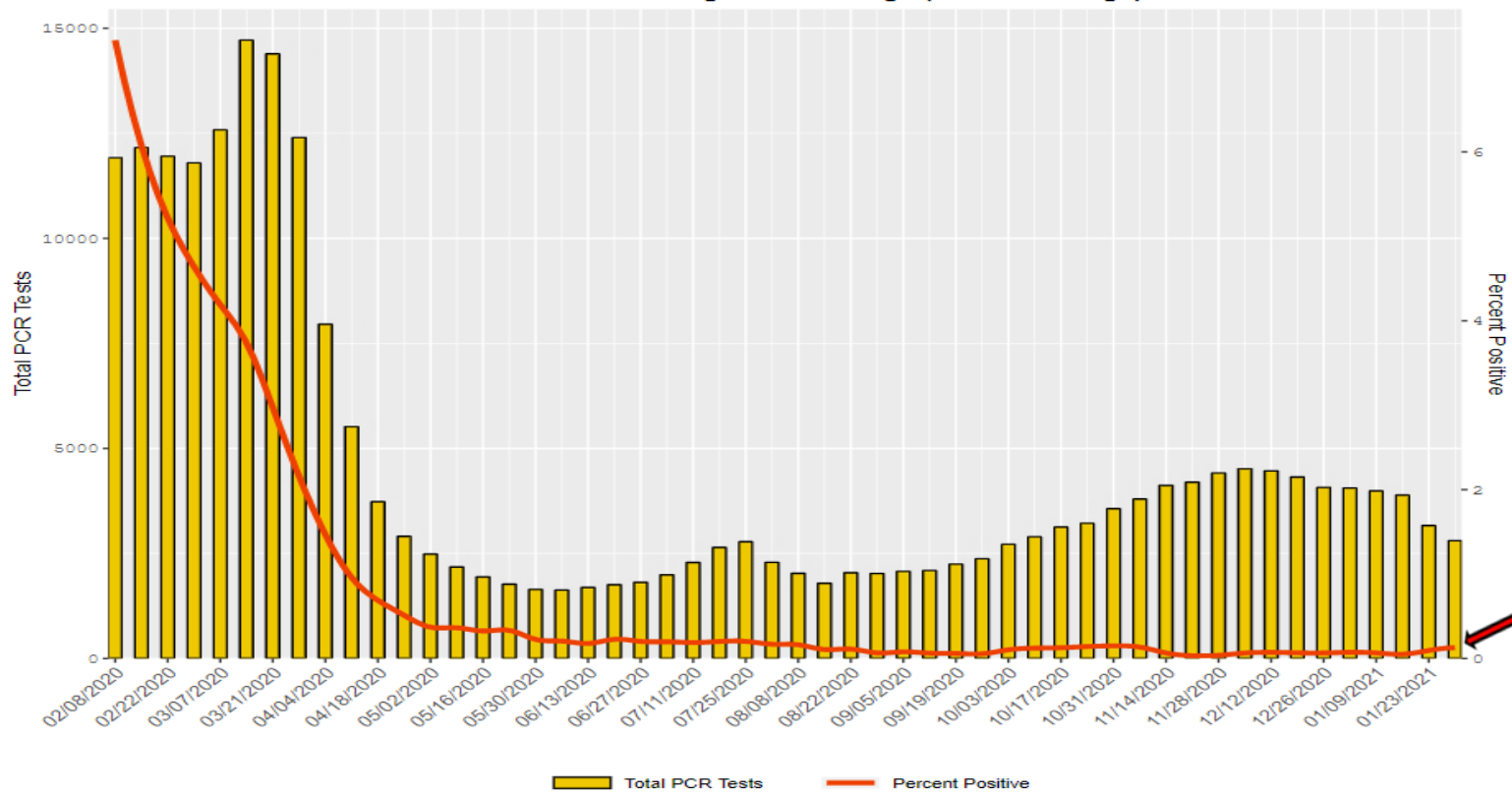


Percent of Respiratory Specimens Positive for Flu

2017-18 2018-19 2019-20 2020-21

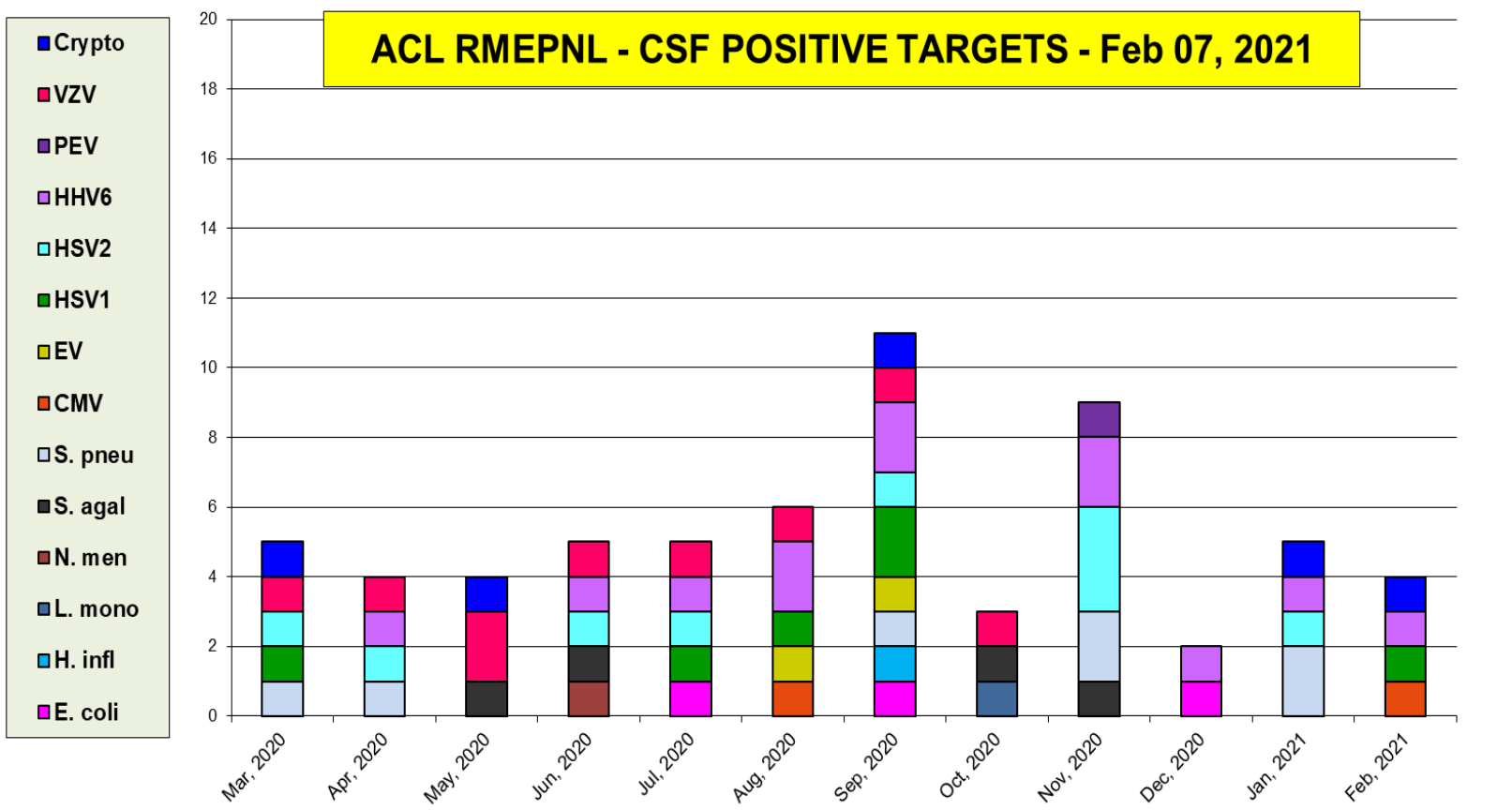


RSV PCR for HHS Region 5 - Chicago (3 week average)

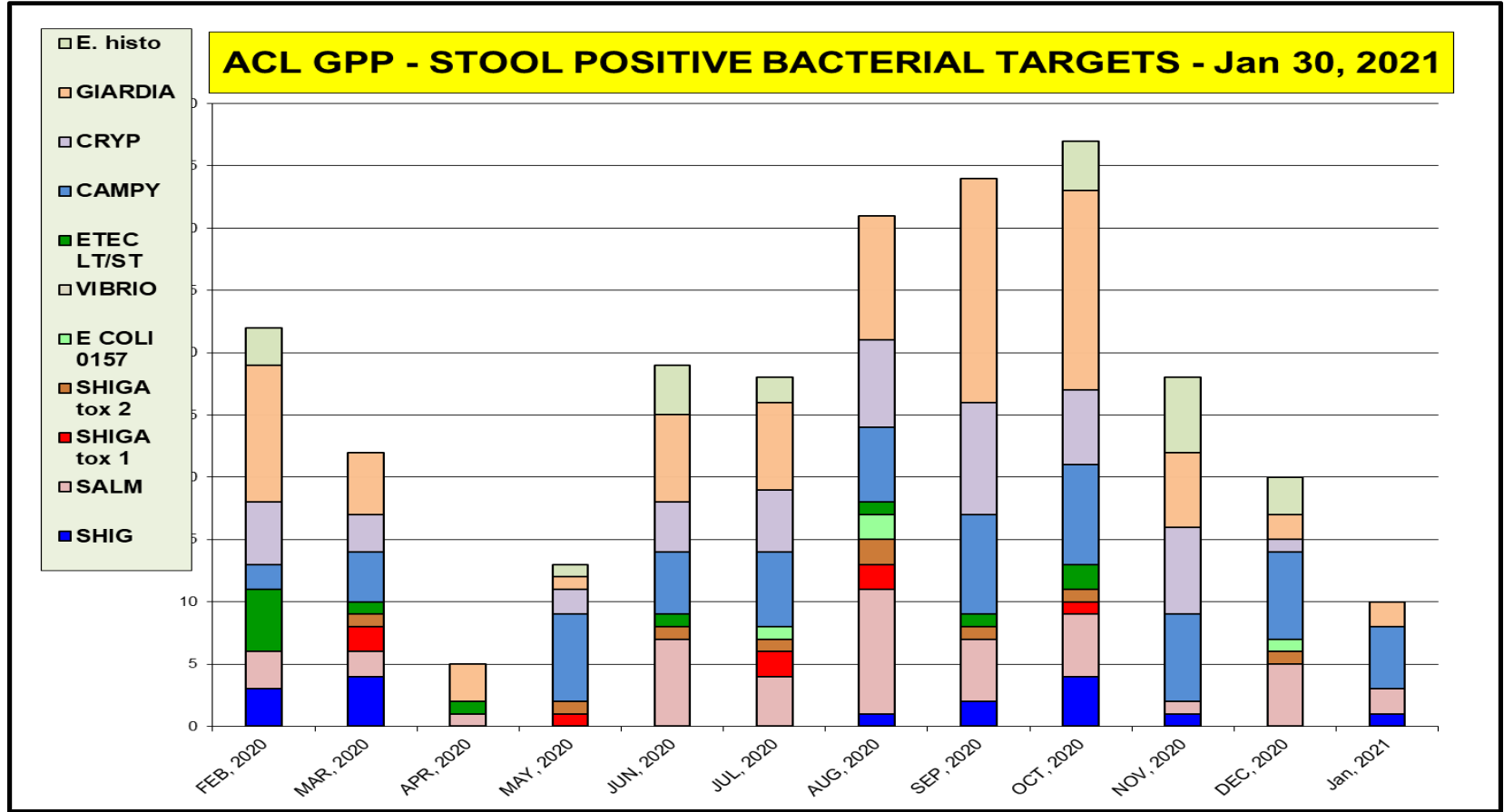


CSF targets positivity rate is 12 %

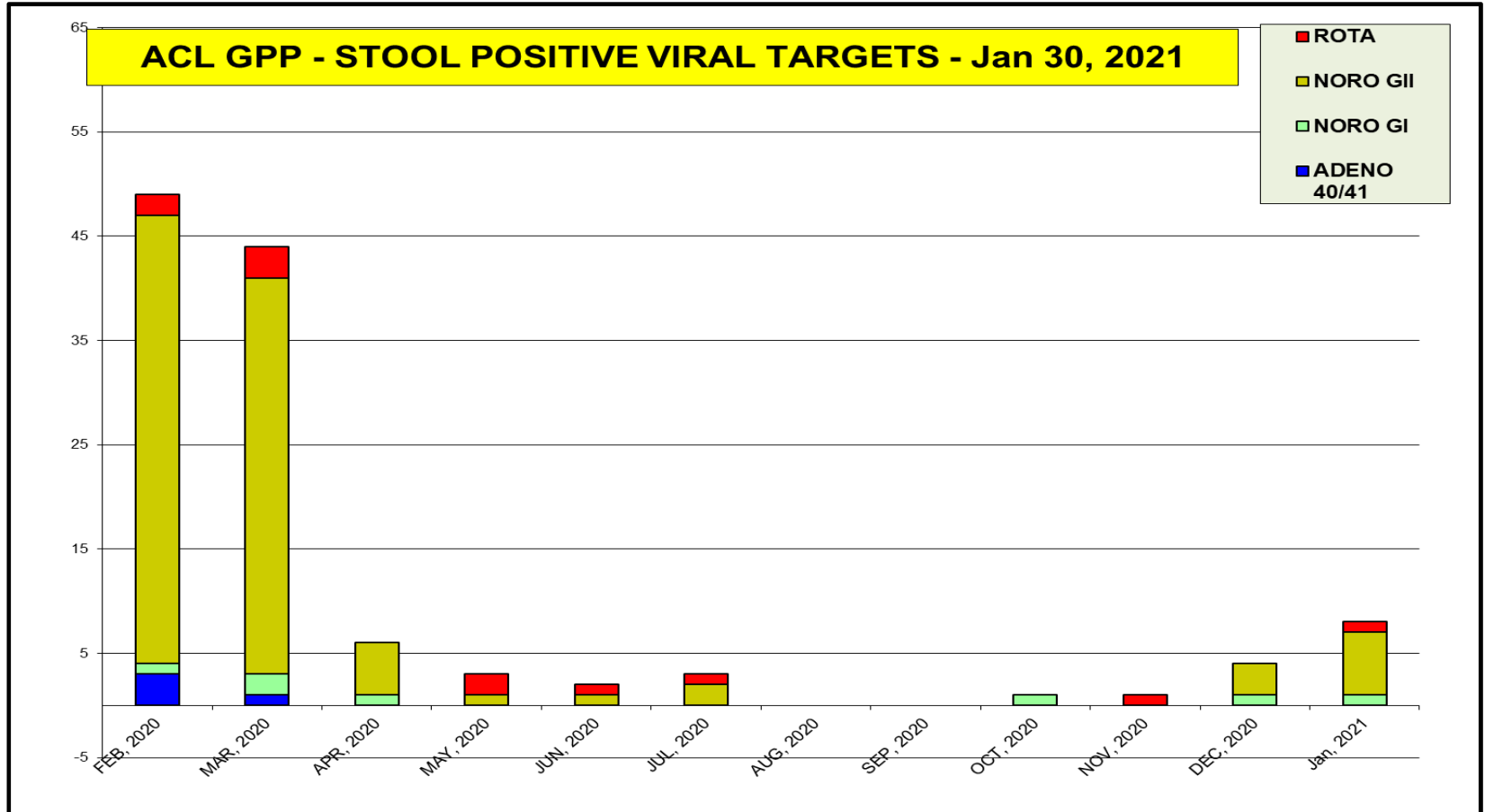
ACL RMEPNL - CSF POSITIVE TARGETS - Feb 07, 2021



The most prevalent GI bacterial targets (Campylobacter)



The most prevalent GI viral targets – Norovirus 3%



Women's Health - Jan 30, 2021 positivity rate (%)				
Bacterial Vag.	Candida spp.	Candida glab.	Trich. vag	M. genitalium
37	23	2	2	9

