

ACL Laboratories COVID-19 and Influenza Activity Report

Updated: February 28, 2021



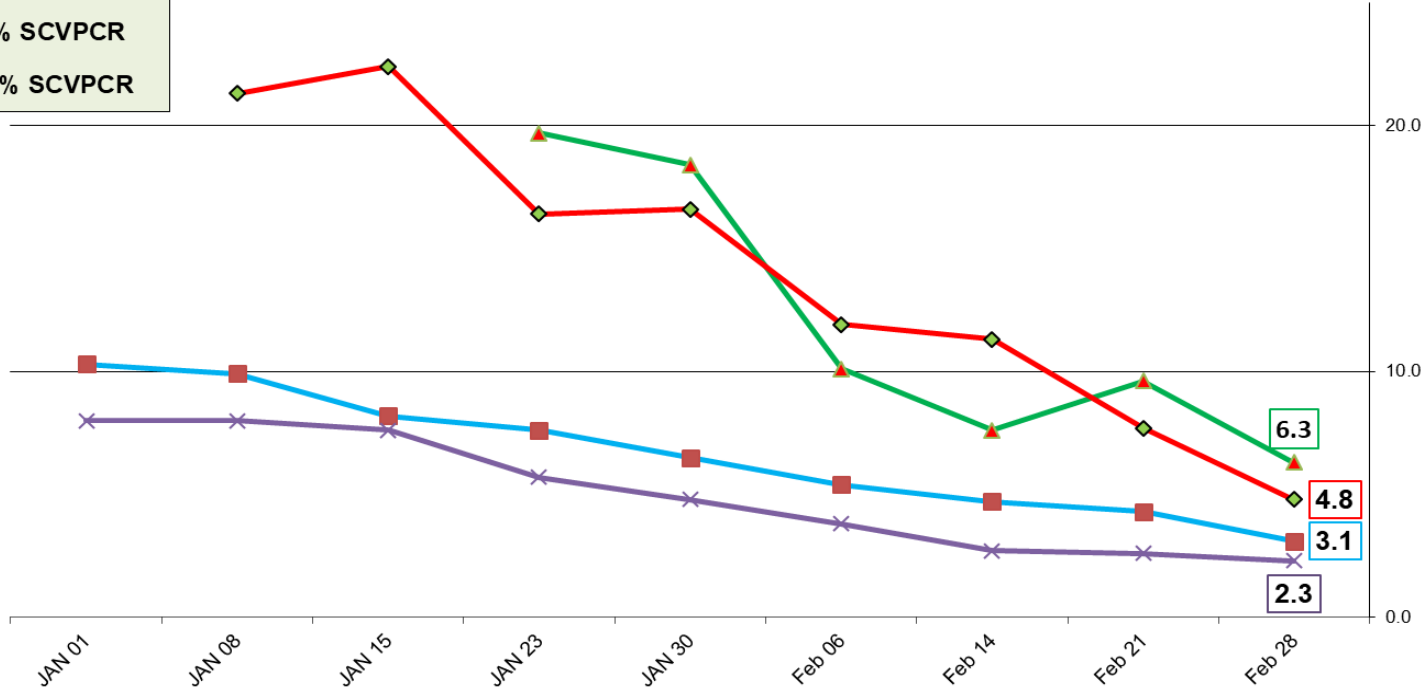
Respiratory Pathogens - Feb 28, 2021

Week	InfA-H1	InfA-H3	2009 H1N1	Inf B	RSV	Para-influenza	EV / Rhino	Meta pneumo	Adeno virus	Corona viruses	Bocca	Myc. pneumo	Chlam. pneumo.	Leg. pneumo.	BP / BPP	Total Pos	POS FLU	Total	ACL RPPNL	US %FLU	IL/WI %FLU	ACL FLUPCR
Feb 28	0	0	0	0	1	0	3	0	1	1	0	0	0	0	0	6	0	148	0.0	n/a	n/a	0.0
Feb 21	0	0	0	0	0	0	9	0	0	1	0	0	0	0	0	10	0	135	0.0	0.2	0.1	0.0
Feb 14	0	0	0	0	0	0	12	0	0	1	0	0	0	0	0	13	0	140	0.0	0.1	0.1	0.0
Feb 7	0	0	0	0	0	0	10	1	0	1	1	0	0	0	0	12	0	143	0.0	0.1	0.1	0.0
Jan 30	0	0	0	0	0	0	14	0	0	0	1	0	0	0	0	15	0	136	0.0	0.2	0.1	0.0
Jan 23	0	0	0	0	0	0	7	0	1	0	0	0	0	0	0	8	0	124	0.0	0.3	0.1	0.0
Jan 15	0	0	0	0	0	0	17	0	2	0	0	0	0	0	0	19	0	126	0.0	0.1	0.1	0.0
Jan 8	0	0	0	0	0	0	6	0	1	0	1	0	0	0	0	18	0	113	0.0	0.4	0.1	0.0
Jan 1	0	0	0	0	0	0	16	0	2	0	0	0	0	0	0	18	0	112	0.0	0.2	0.1	0.0
Dec 26	0	0	0	0	0	0	6	0	1	0	2	0	0	1	0	10	0	105	0.0	0.3	0.2	0.0
Dec 19	0	0	0	0	0	0	13	0	1	0	1	0	0	0	0	15	0	144	0.0	0.1	0.1	0.0
Dec 12	0	0	0	0	0	0	9	1	0	0	0	0	0	0	0	10	0	113	0.0	0.3	0.1	0.0

SARS-COV-2					RSV - no activity				Influenza - no activity				Hologic Aptima	
Week	IL % SCVPCR	WI % SCVPCR	IL % COVAG	WI % COVAG	IL % RSVPCR	WI % RSVPCR	IL % RSVAG	WI % RSVAG	IL % FLUPCR	WI % FLUPCR	IL % FLUAG	WI % FLUAG	IL % COV19	WI % COV19
Feb 28	3.1	2.3	6.3	4.8	0	0	1	0	0	0	0	1.5	2.3	1.9
Feb 21	4.3	2.6	9.6	7.7	0	0	0	0	0	0	0	1.5	2.6	2.0
Feb 14	4.7	2.7	7.6	11.3	0	0	0	0	0	0	n/a	2	3.2	2.7
Feb 06	5.4	3.8	10.1	11.9	0	0	0	0	0	0	n/a	1	3.9	3.6
JAN 30	6.5	4.8	18.4	16.6	0	0	0	0	0	0	n/a	0	4.5	4.4
JAN 23	7.6	5.7	19.7	16.4	0	0	0	0	0	0	n/a	1	6.5	5.3
JAN 15	8.2	7.6	23.4	22.4	0	0	0	0	0	0	n/a	5	8.2	7.6
JAN 08	9.9	8.0	28.3	21.3	0	0	0	0	0	0	n/a	0	9.4	9.7
JAN 01	10.3	8.0	29.5	24.9	0	0	0	0	0	0	n/a	2	11.8	13.6
DEC 26	12.3	9.3	25.1	23.9	0	0	0	0	0	0	n/a	0	12.1	11.3
DEC 19	12.0	10.2	27.1	24.9	0	0	0	0	0	0	n/a	0	10.8	10.2

ACL COVAG and SCVPCR - Pos rate (%) - Feb 28, 2021

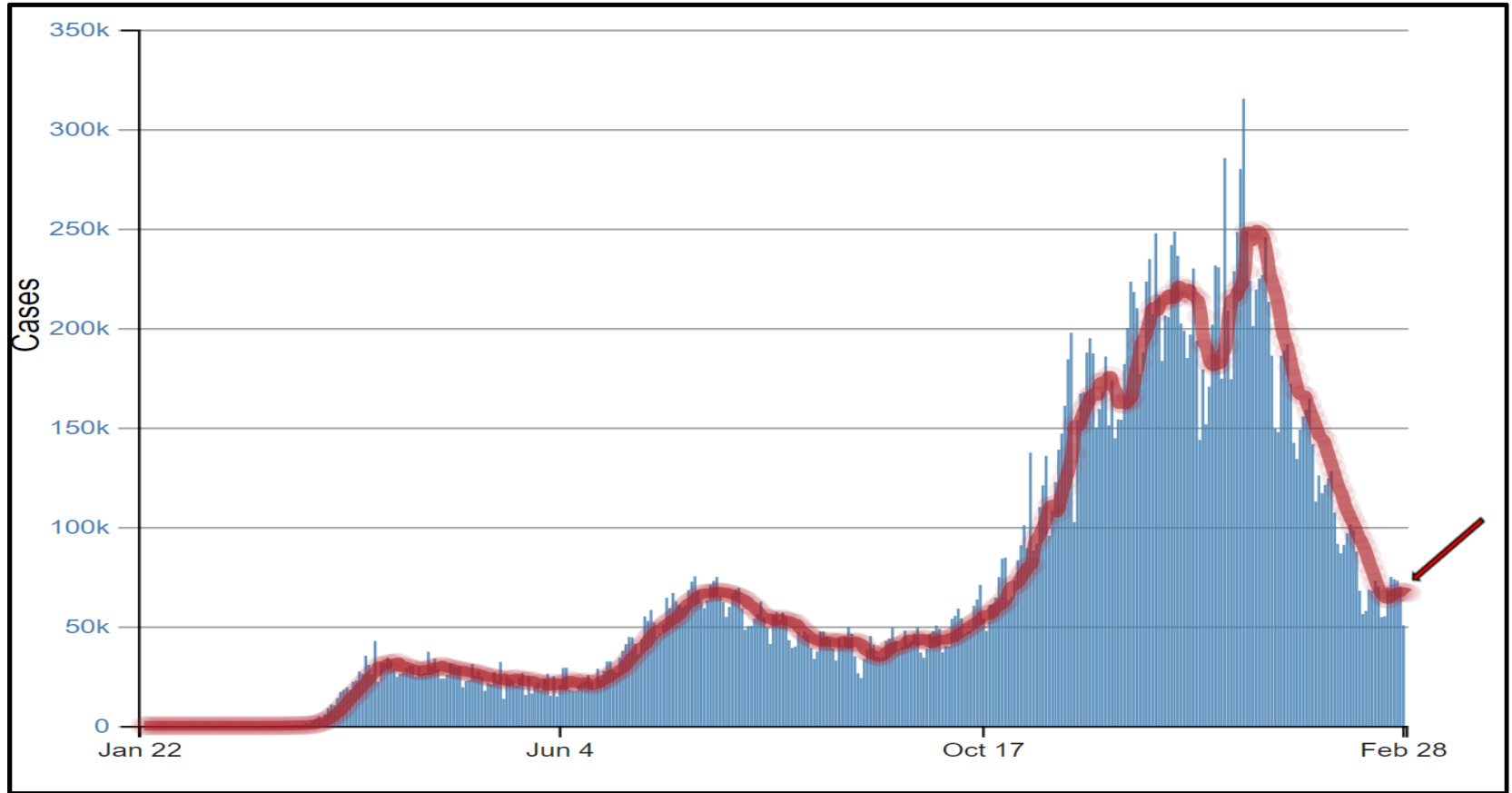
- IL % COVAG
- WI % COVAG
- IL % SCVPCR
- WI % SCVPCR



COVAG Antigen rapid test – is performed at **Urgent Care** sites.

SCVPCR - Rapid PCR - test is performed using Cepheid PCR at AAH **Hospital** sites.

Feb 28, 2021 - daily COVID-19 cases in US - CDC



Total Vaccine Doses

Delivered	96,402,490
Administered	76,899,987

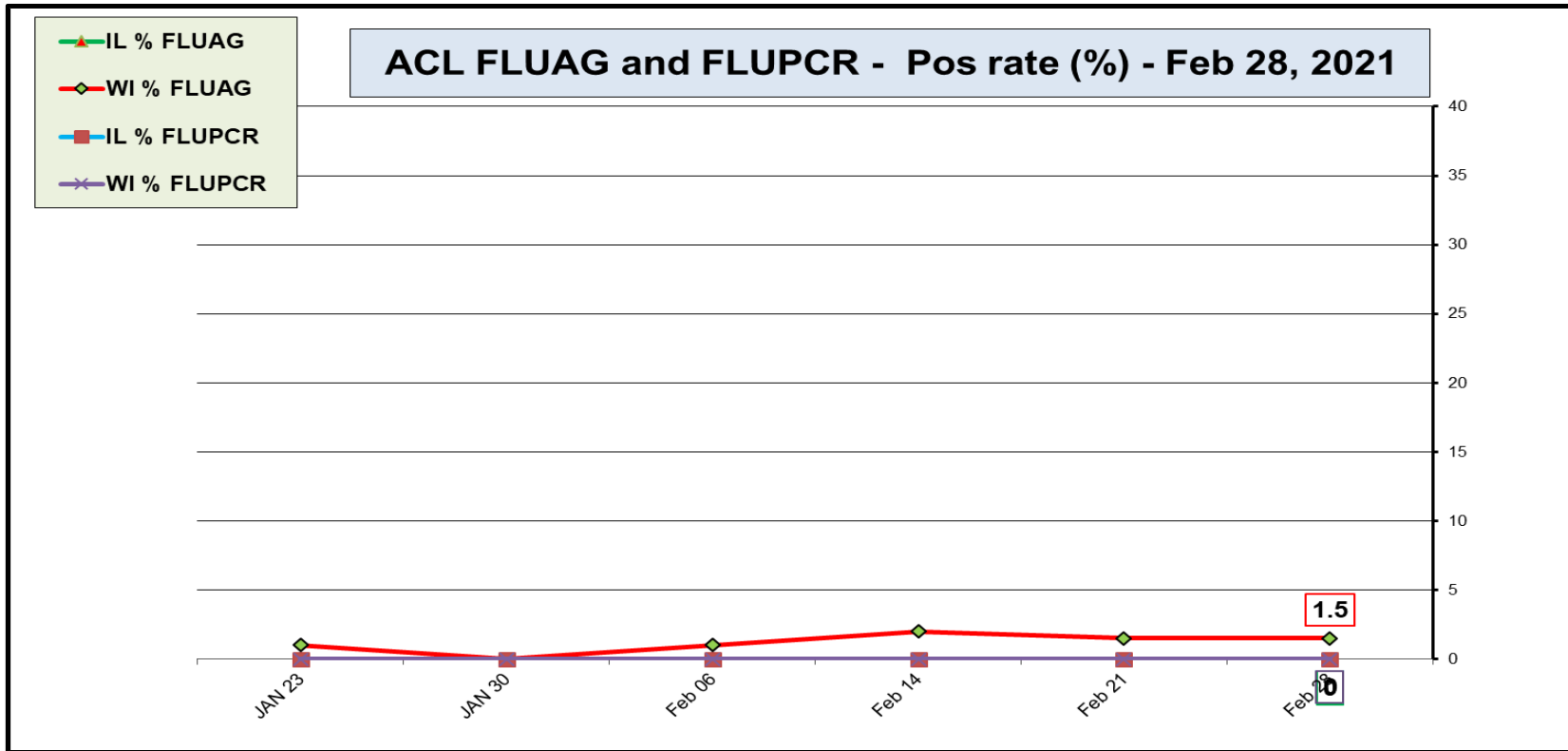
Learn more about the [distribution of vaccines](#).

People Vaccinated

	Receiving 1 or More Doses	Receiving 2 Doses
Total	50,732,997	25,466,405
% of Total Population	15.3%	7.7%
Population ≥ 18 Years of Age	50,688,624	25,450,394
% of Population ≥ 18 Years of Age	19.9%	10%

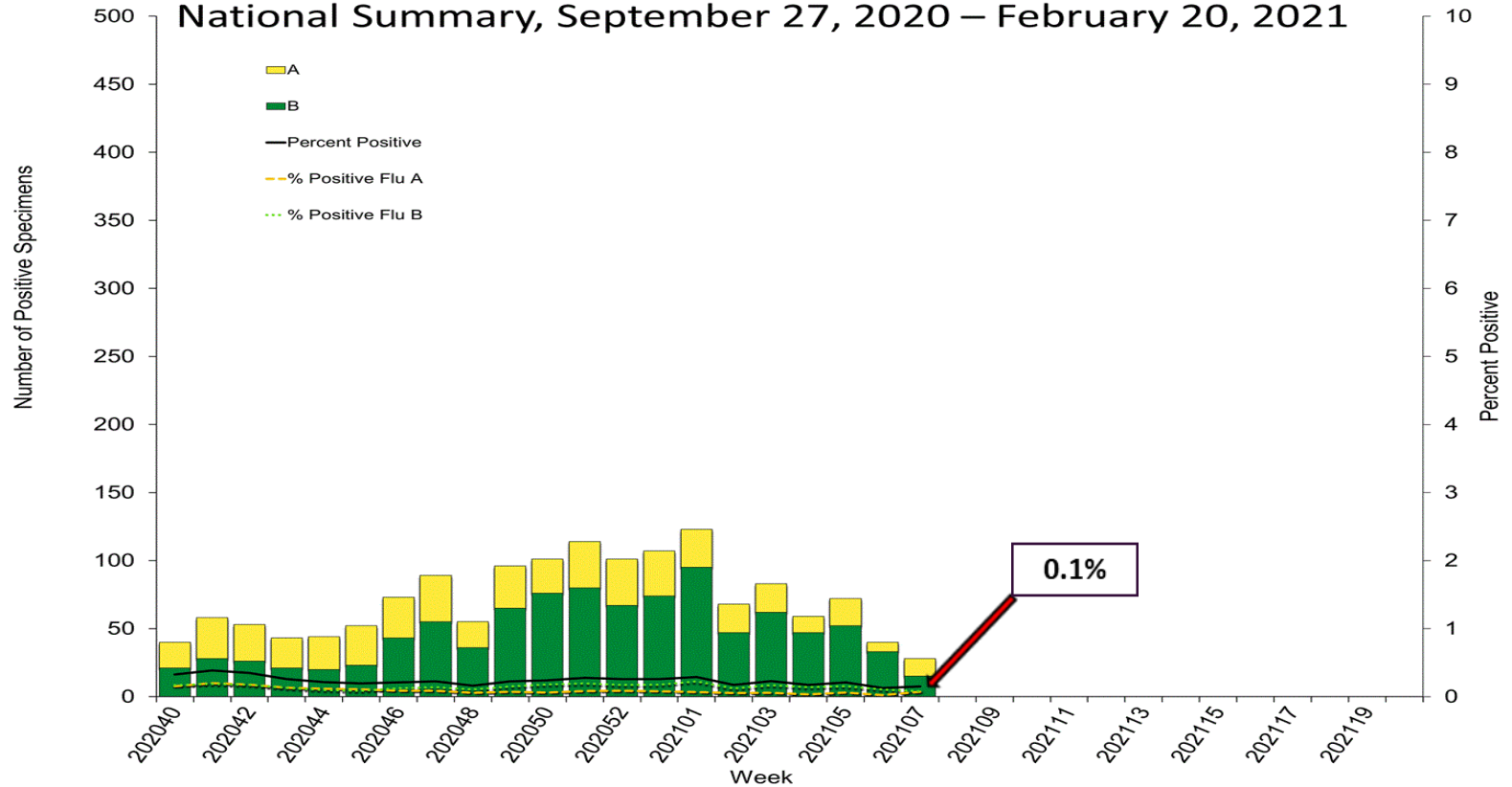
Read more about how these [data are reported](#).

CDC | Data as of: Mar 01 2021 6:00am ET | Posted: Mar 1 2021 12:26PM ET

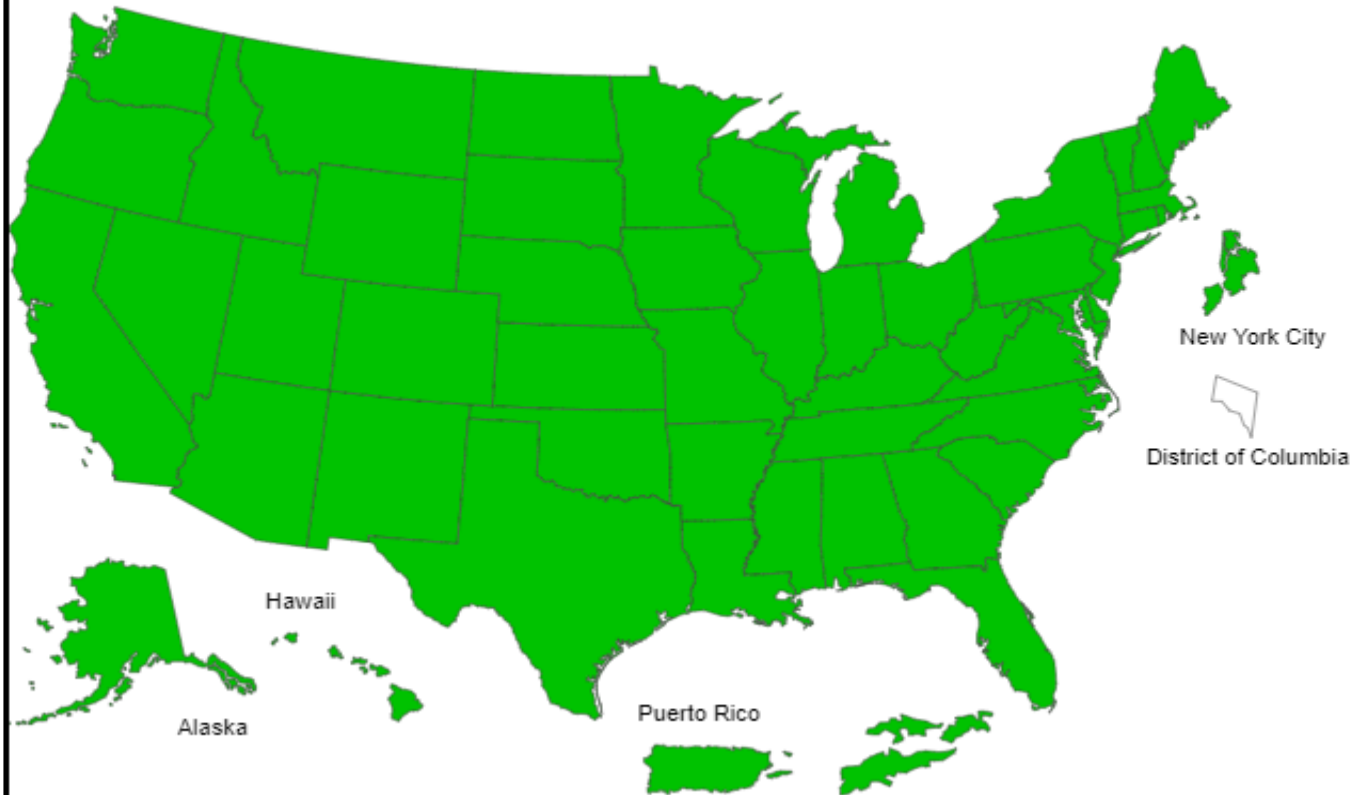


FLUAG Antigen rapid test – 1 sample Positive for Flu B were detected at Urgent Care WI.
FLUPCR - Rapid PCR - test is performed using Cepheid PCR at AAH Hospital sites.

Influenza Positive Tests Reported to CDC by U.S. Clinical Laboratories, National Summary, September 27, 2020 – February 20, 2021



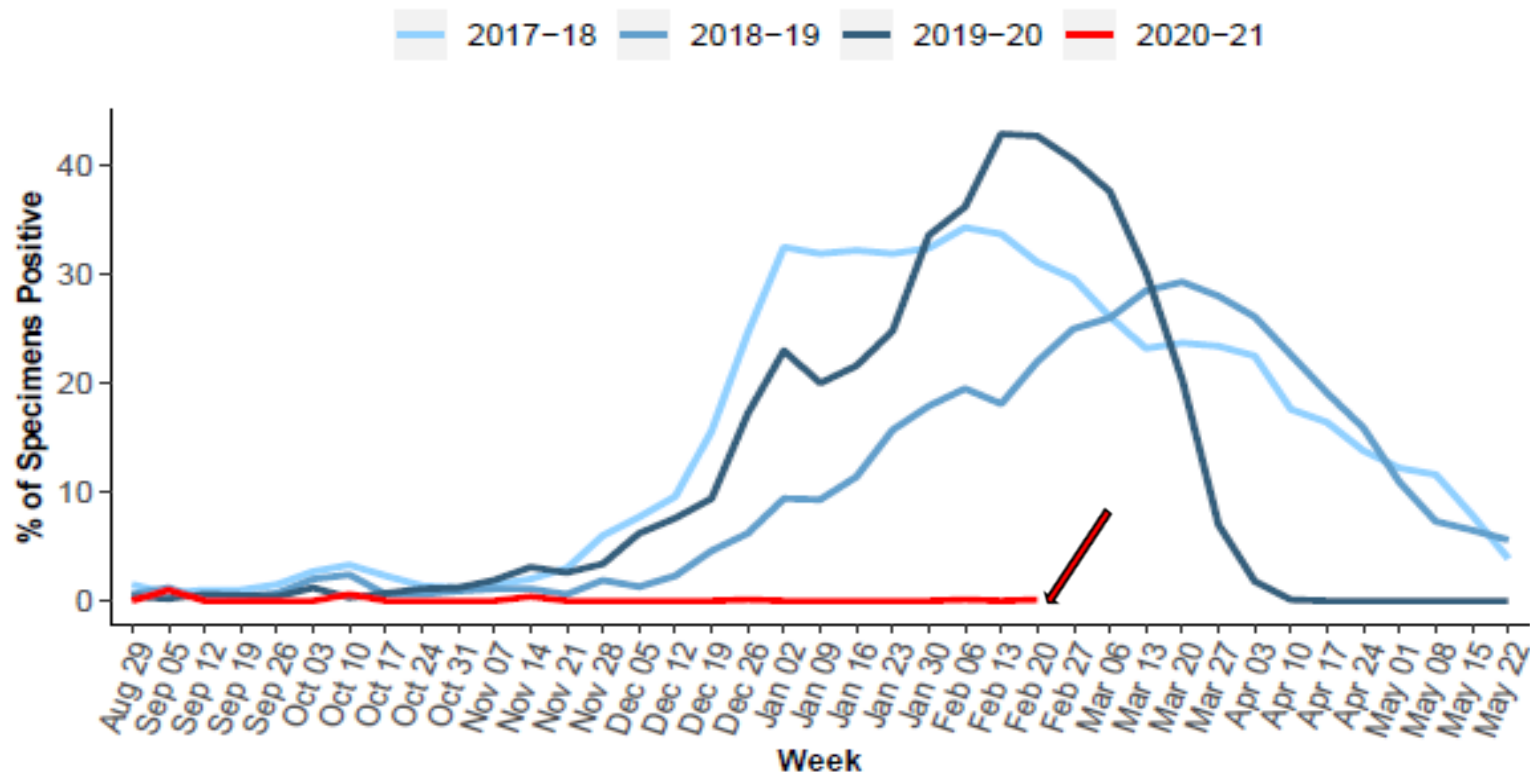
2020-21 Influenza Season Week 7 ending Feb 20, 2021



ILI Activity Lev

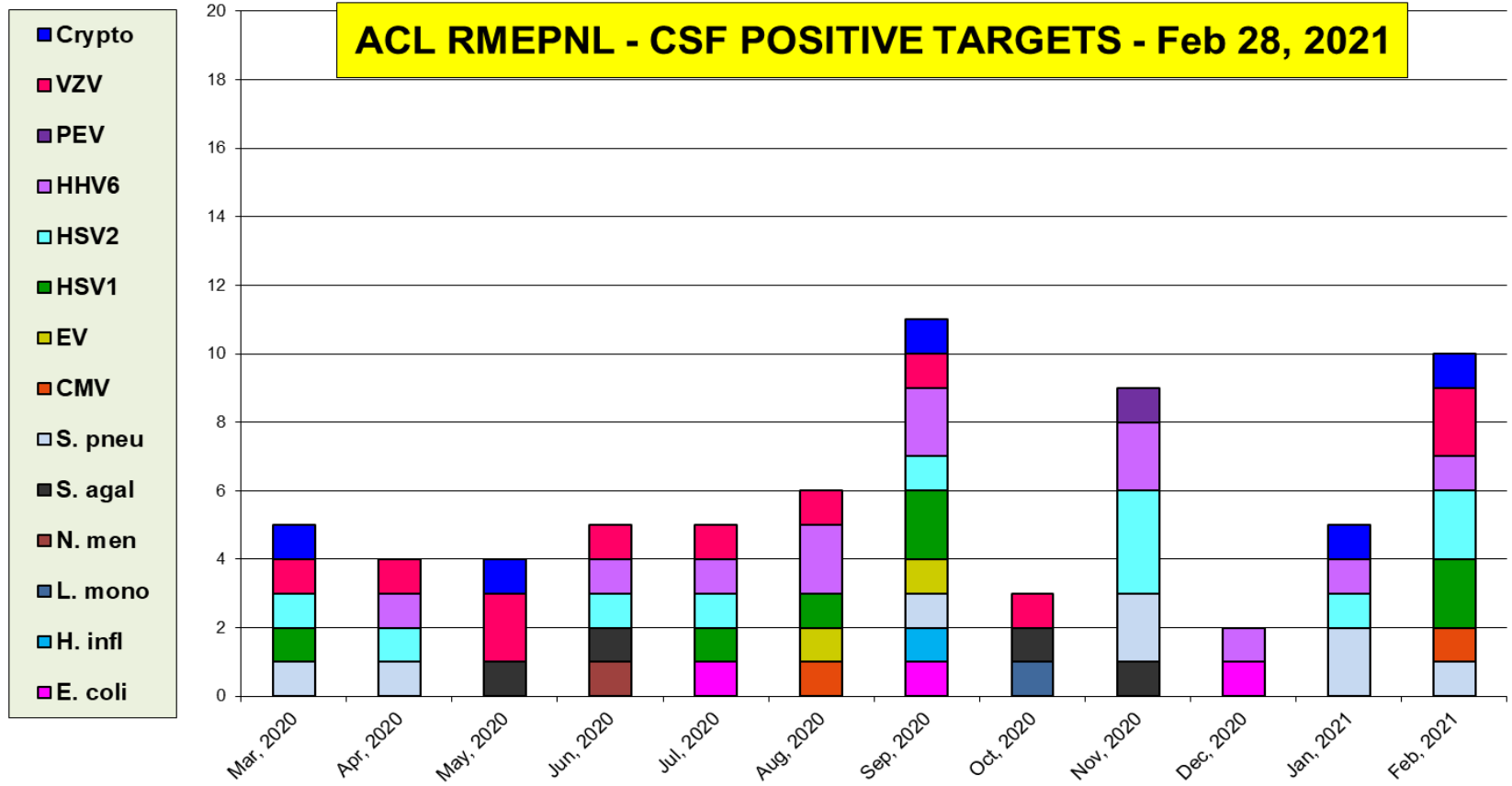


Percent of Respiratory Specimens Positive for Flu

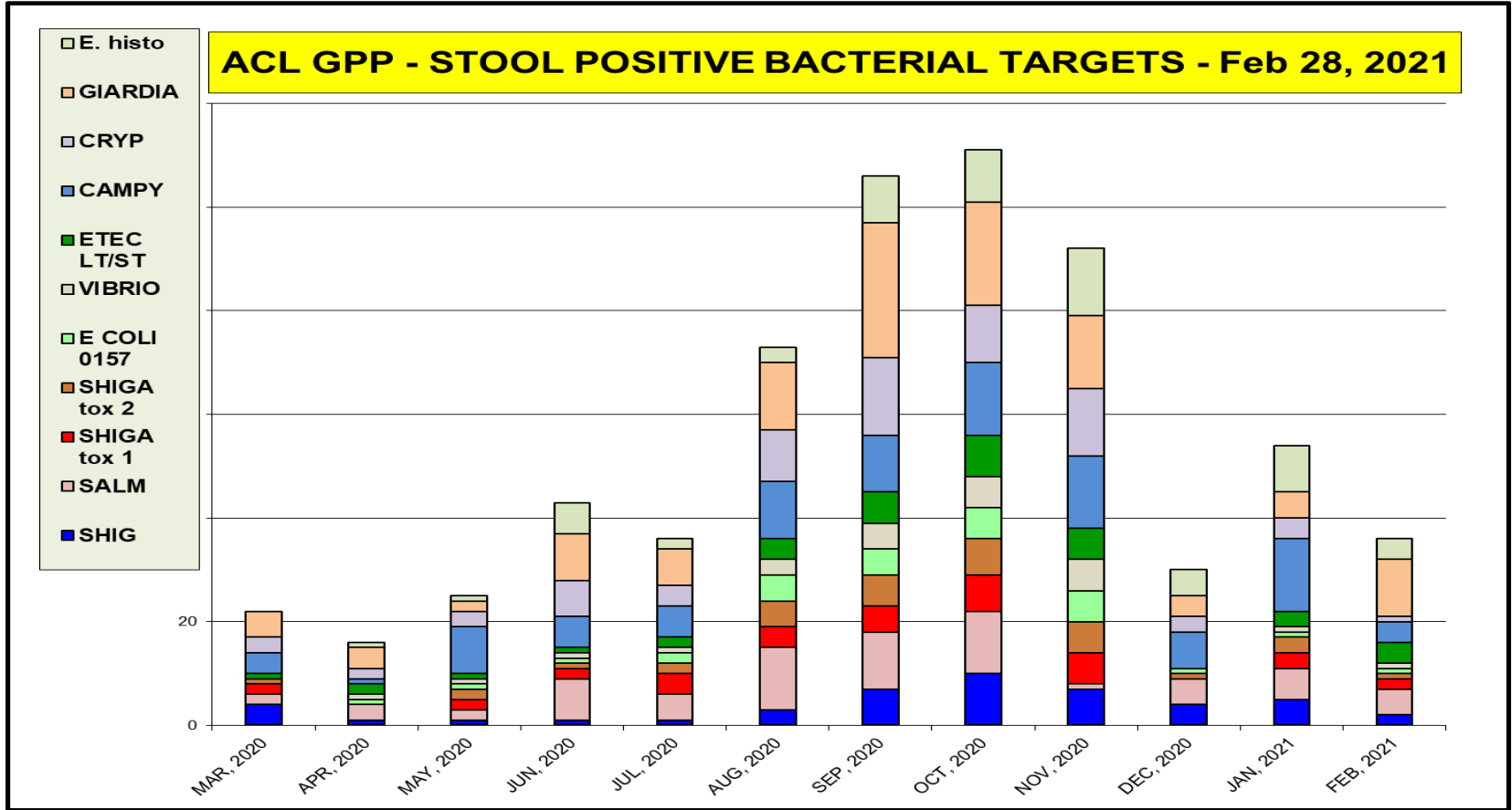


CSF targets positivity rate is 9%

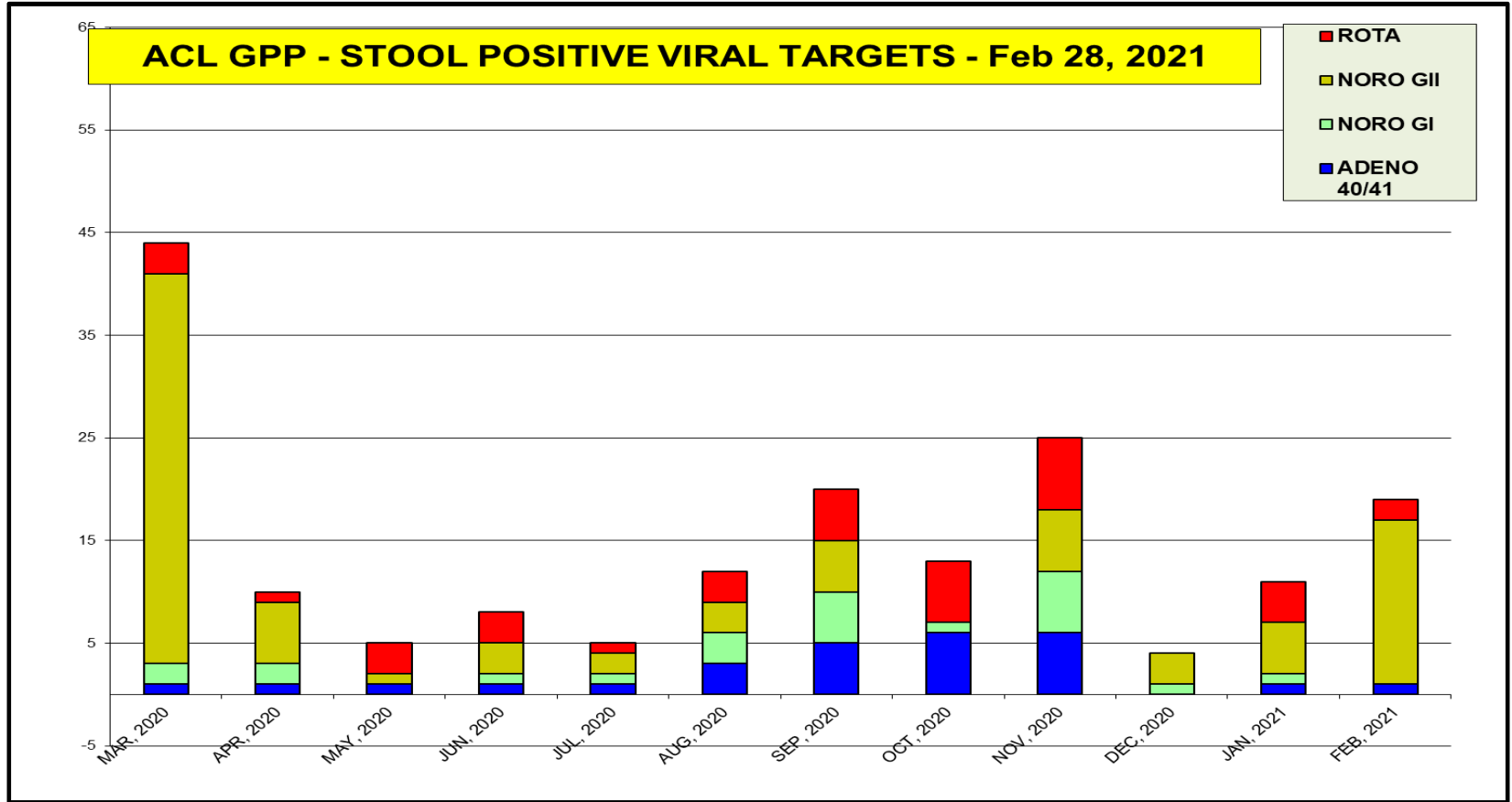
ACL RMEPNL - CSF POSITIVE TARGETS - Feb 28, 2021



The most prevalent GI bacterial targets (Giardia)



The most prevalent GI viral targets – Norovirus 6%



Women's Health - Feb 28, 2021 positivity rate (%)

Bacterial Vag.	Candida spp.	Candida glab.	Trich. vag	M. genitalium
32	20	2	3	7

Women Health SwabOne - Prevalence rate (%)

- M. genitalium
- Trich. vag.
- Candida glab.
- Candida spp.
- Bact. Vag.

