

ACL Laboratories COVID-19 and Influenza Activity Report

Updated: January 23, 2021



Respiratory Pathogens - Jan 23, 2021

Week	InfA-H1	InfA-H3	2009 H1N1	Inf B	RSV	Para-influenza	EV/ Rhino	Meta pneumo	Adeno virus	Corona viruses	Bocca	Myc. pneumo	Chlam. pneumo.	Leg. pneumo.	BP / BPP	Total Pos	POS FLU	Total	ACL RPPNL	US %FLU	IL/WI %FLU	ACL FLUPCR
Jan 23	0	0	0	0	0	0	7	0	1	0	0	0	0	0	0	8	0	124	0.0	n/a	n/a	0.0
Jan 15	0	0	0	0	0	0	17	0	2	0	0	0	0	0	0	19	0	126	0.0	0.1	0.1	0.0
Jan 8	0	0	0	0	0	0	6	0	1	0	1	0	0	0	0	18	0	113	0.0	0.4	0.1	0.0
Jan 1	0	0	0	0	0	0	16	0	2	0	0	0	0	0	0	18	0	112	0.0	0.2	0.1	0.0
Dec 26	0	0	0	0	0	0	6	0	1	0	2	0	0	1	0	10	0	105	0.0	0.3	0.2	0.0
Dec 19	0	0	0	0	0	0	13	0	1	0	1	0	0	0	0	15	0	144	0.0	0.1	0.1	0.0
Dec 12	0	0	0	0	0	0	9	1	0	0	0	0	0	0	0	10	0	113	0.0	0.3	0.1	0.0
Dec 5	0	0	0	0	0	0	10	0	2	0	0	0	0	0	0	12	0	146	0.0	0.2	0.1	0.0
Nov 28	0	0	0	0	0	0	10	0	1	0	2	0	0	0	0	13	0	161	0.0	0.1	0.1	0.0
Nov 21	0	0	0	0	0	0	13	1	0	0	0	0	0	0	0	14	0	140	0.0	0.2	0.1	0.0
Nov 14	0	0	0	0	0	0	7	0	0	1	2	0	0	0	0	0	0	158	0.0	0.2	0.1	0.0
Nov 7	0	0	0	0	0	0	9	0	0	0	2	0	0	0	0	11	0	96	0.0	0.2	0.2	0.0
Oct 31	0	0	0	0	0	0	7	0	0	0	4	0	0	0	0	11	0	233	0.0	0.1	0.2	0.0
Oct 23	0	0	0	0	0	0	12	3	2	0	2	0	0	0	0	19	0	173	0.0	0.2	0.4	0.0

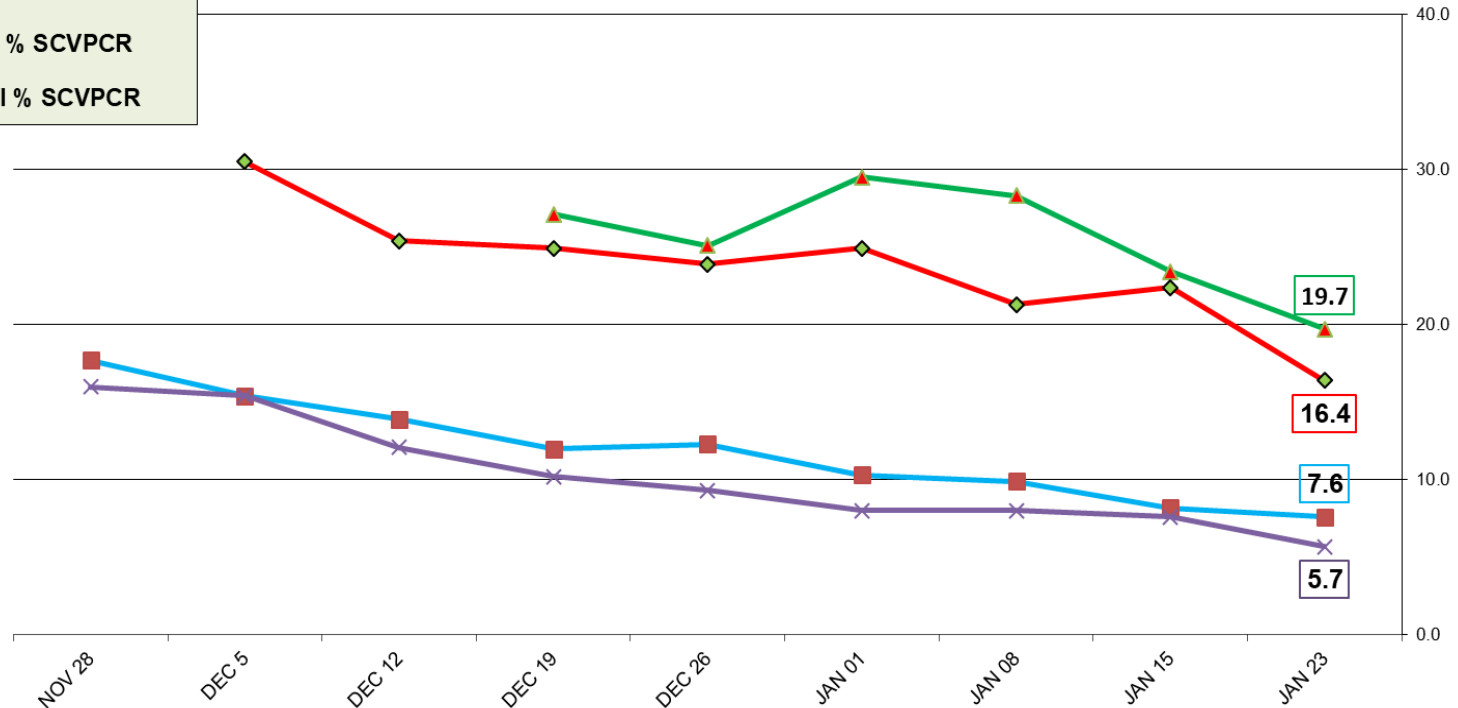
SARS-COV-2					RSV - no activity				Influenza - no activity			
Week	IL % SCVPCR	WI % SCVPCR	IL % COVAG	WI % COVAG	IL % RSVPCR	WI % RSVPCR	IL % RSVAG	WI % RSVAG	IL % FLUPCR	WI % FLUPCR	IL % FLUAG	WI % FLUAG
JAN 23	7.6	5.7	19.7	16.4	0	0	0	0	0	0	n/a	1
JAN 15	8.2	7.6	23.4	22.4	0	0	0	0	0	0	n/a	5
JAN 08	9.9	8.0	28.3	21.3	0	0	0	0	0	0	n/a	0
JAN 01	10.3	8.0	29.5	24.9	0	0	0	0	0	0	n/a	2
DEC 26	12.3	9.3	25.1	23.9	0	0	0	0	0	0	n/a	0
DEC 19	12.0	10.2	27.1	24.9	0	0	0	0	0	0	n/a	0
DEC 12	13.9	12.1	22.5	25.4	0	0	0	0	0	0	n/a	0
DEC 5	15.4	15.4	30.3	30.5	0	0	0	0	0	0	n/a	0
NOV 28	17.7	16.0	30.5	30.5	0	0	0	0	0	0	n/a	0
NOV 21	16.5	14.0	25.1	24.5	0	0	0	0	0	0	n/a	2
NOV 14	16.8	13.9	30.2	32.5	0	0	0	0	0	0	n/a	0
NOV 7	13.6	15.8	30.9	36.7	0	0	0	0	0	0	n/a	n/a
OCT 31	9.0	12.1	28.5	32.3	0	0	0	0	0	0	n/a	n/a
OCT 24	8.2	9.5	21.0	29.1	0	0	0	0	0	0	n/a	n/a

FLUAG Antigen rapid test -1 sample tested positive Flu A in WI.

(in low prevalence season (<3%) - antigen tests are prone to produce spurious false positive results)

ACL COVAG and SCVPCR - Pos rate (%) - Jan 23, 2021

- IL % COVAG
- WI % COVAG
- IL % SCVPCR
- WI % SCVPCR



COVAG Antigen rapid test – is performed at **Urgent Care** sites.

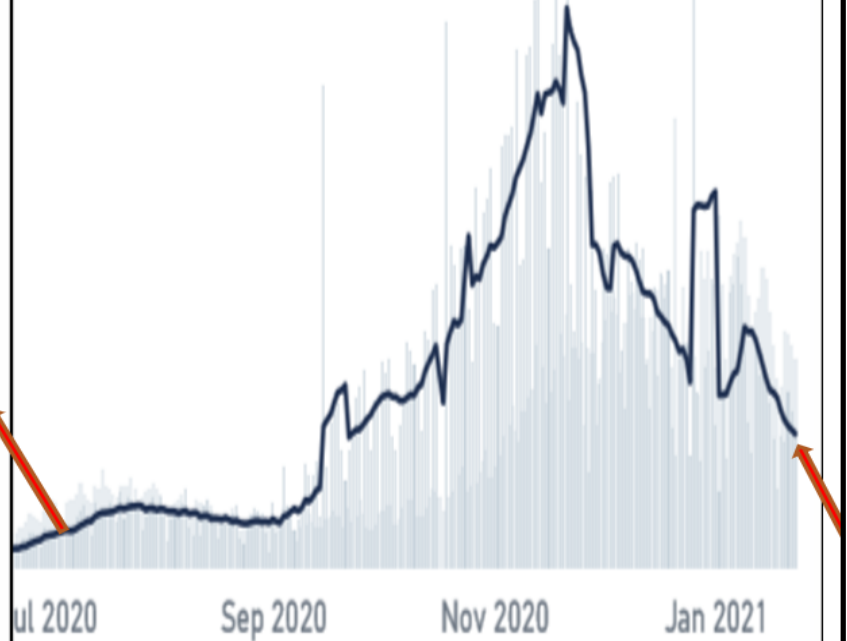
SCVPCR - Rapid PCR - test is performed using Cepheid PCR at **AAH Hospital** sites.

CDC- IL State Covid Cases Jan 23, 2021



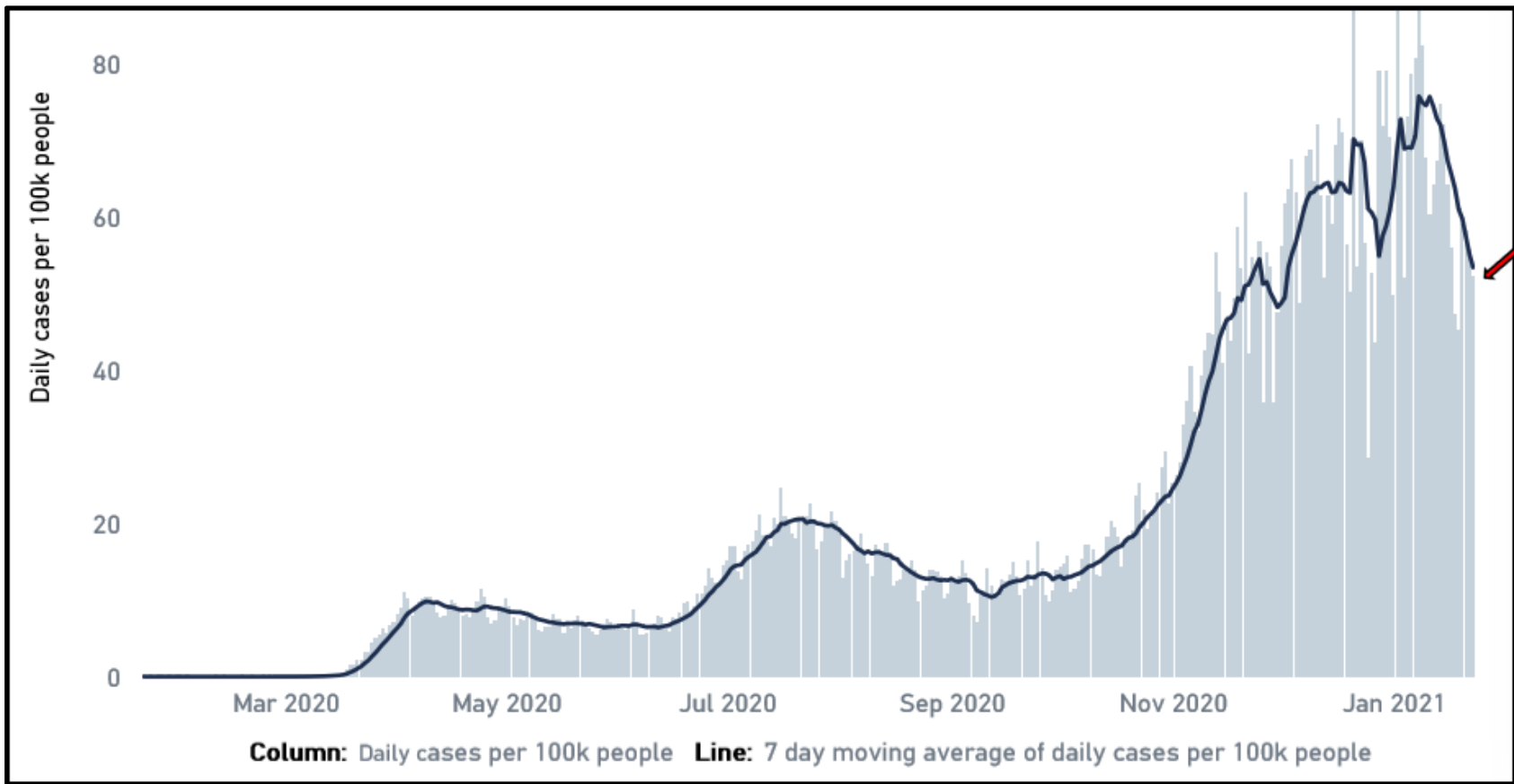
Line: 7 day moving average of daily cases per 100k people

CDC- WI State Covid Cases Jan 23, 2021



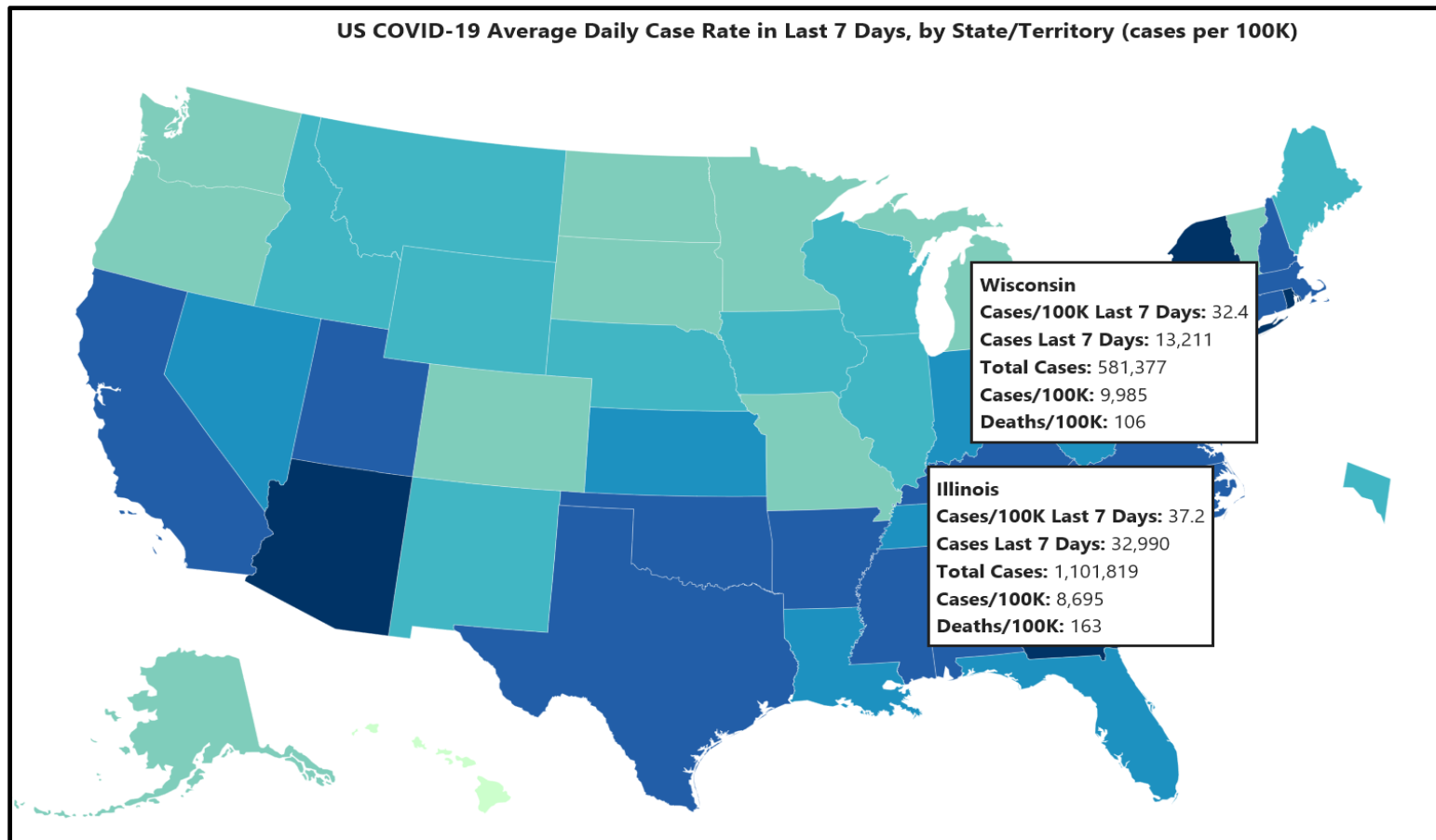
Line: 7 day moving average of daily cases per 100k people

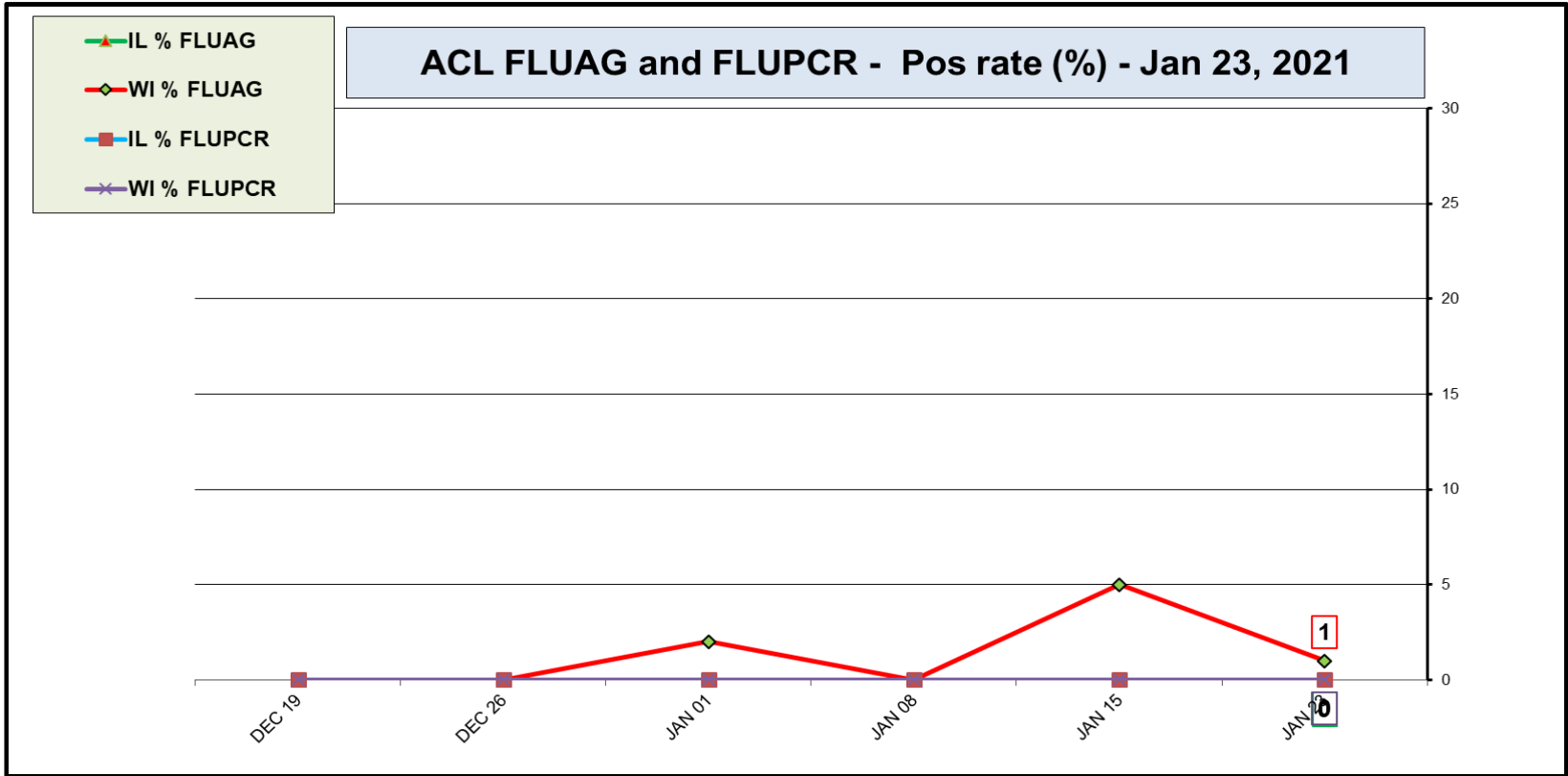
Jan 23, 2021 - daily COVID-19 cases in US - CDC



Jan 23, 2021 – Average Daily Case Rate - CDC

US COVID-19 Average Daily Case Rate in Last 7 Days, by State/Territory (cases per 100K)

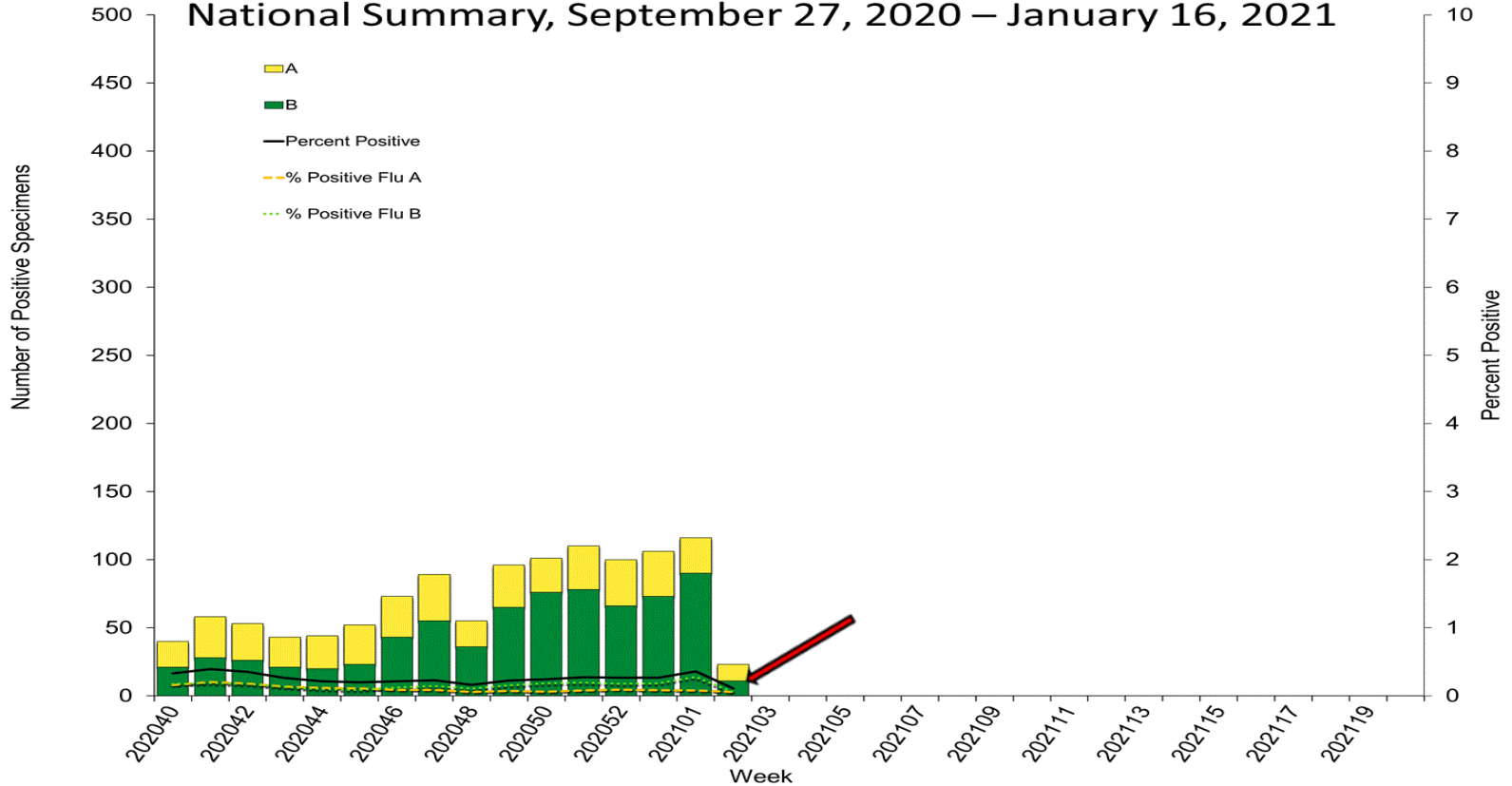




FLUAG Antigen rapid test – is performed at **Urgent Care** sites.

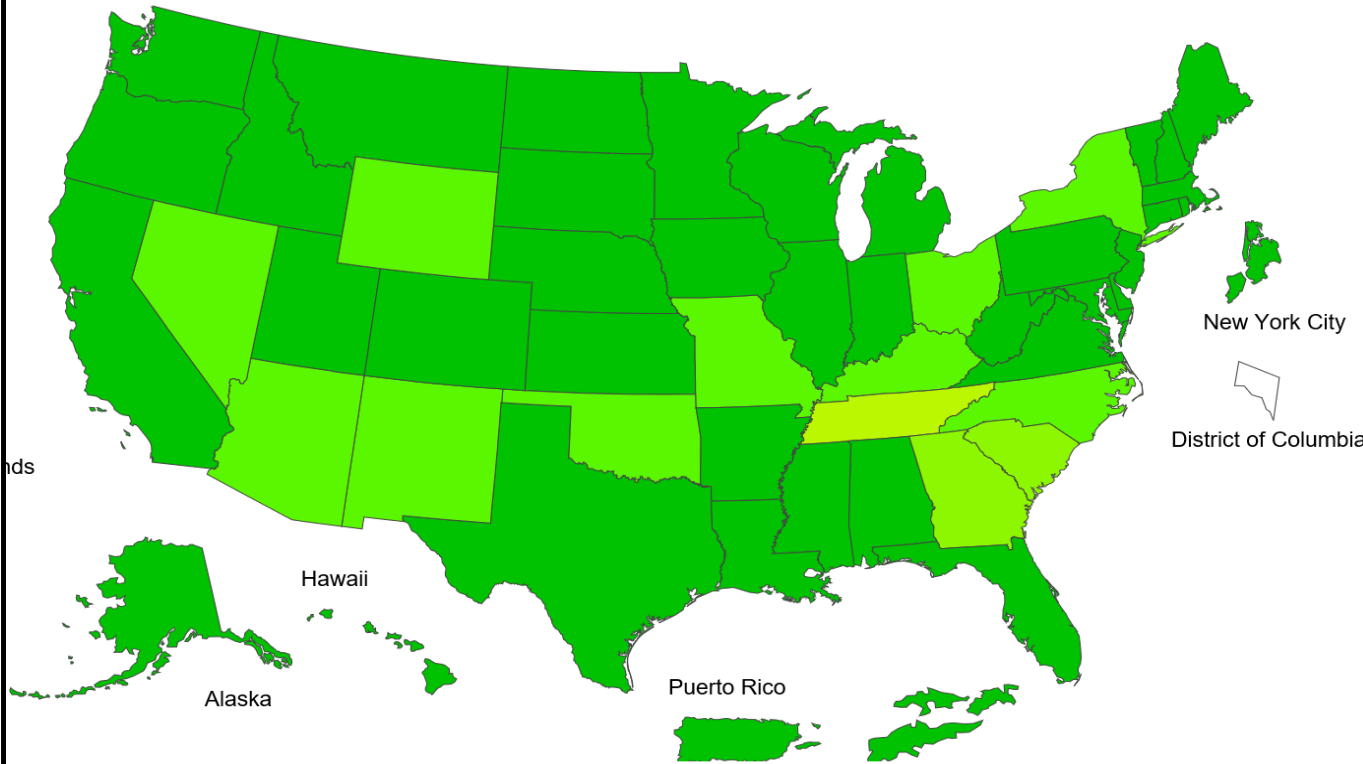
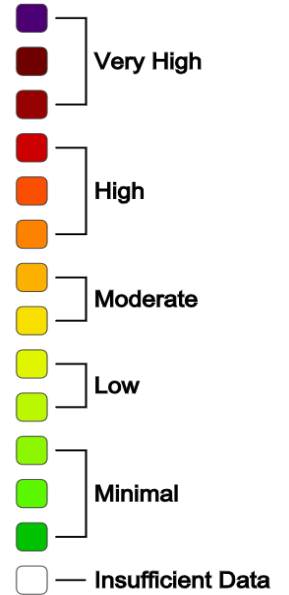
FLUPCR - Rapid PCR - test is performed using Cepheid PCR at AAH **Hospital** sites.

Influenza Positive Tests Reported to CDC by U.S. Clinical Laboratories, National Summary, September 27, 2020 – January 16, 2021



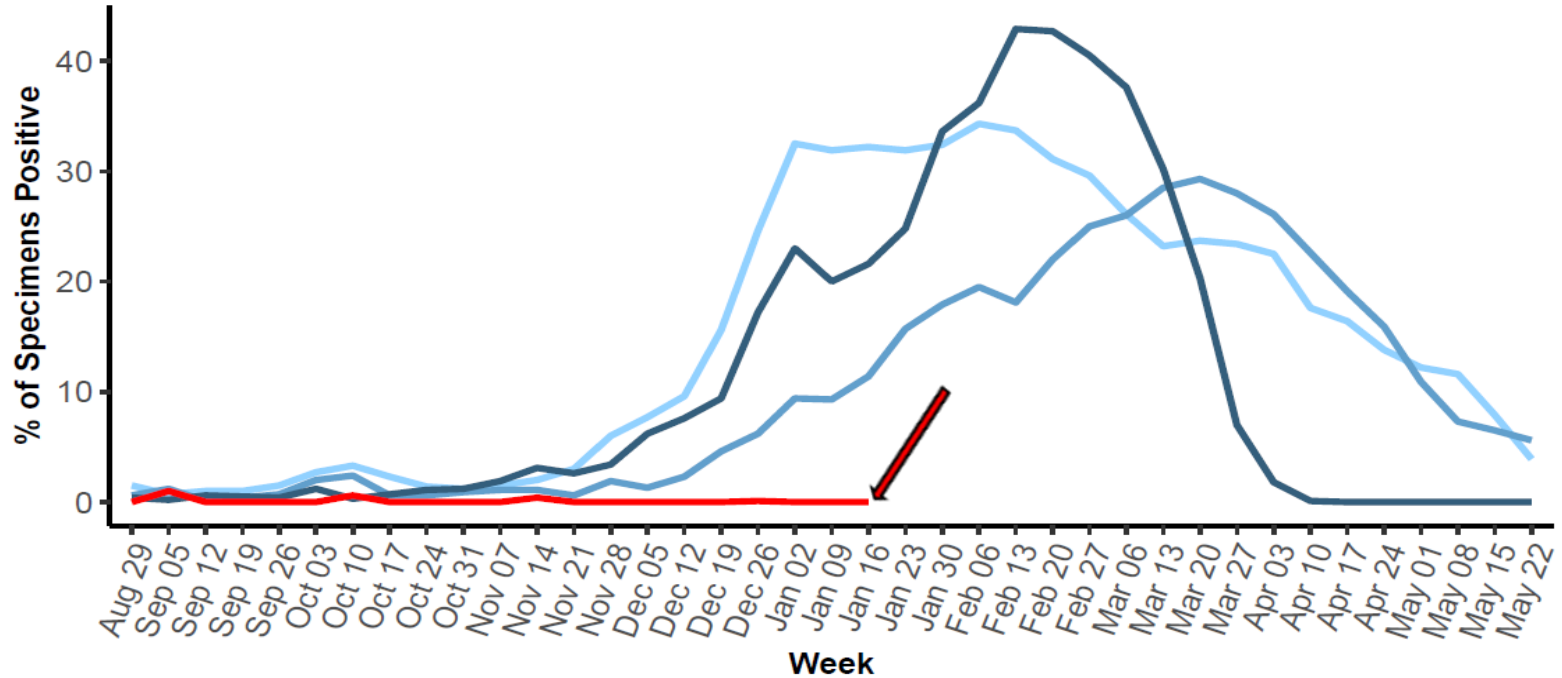
2020-21 Influenza Season Week 2 ending Jan 16, 2021

ILI Activity Level

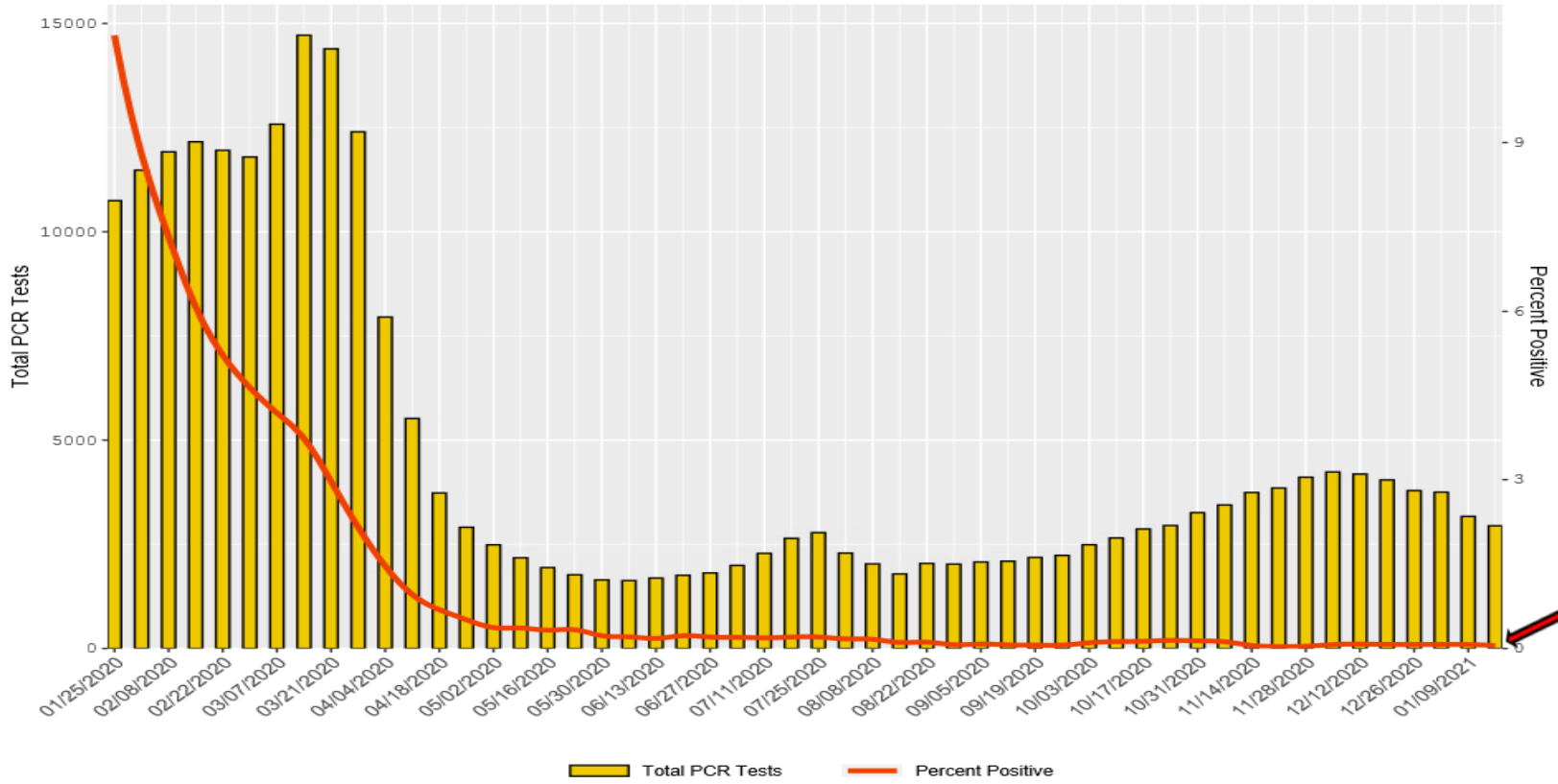


Percent of Respiratory Specimens Positive for Flu

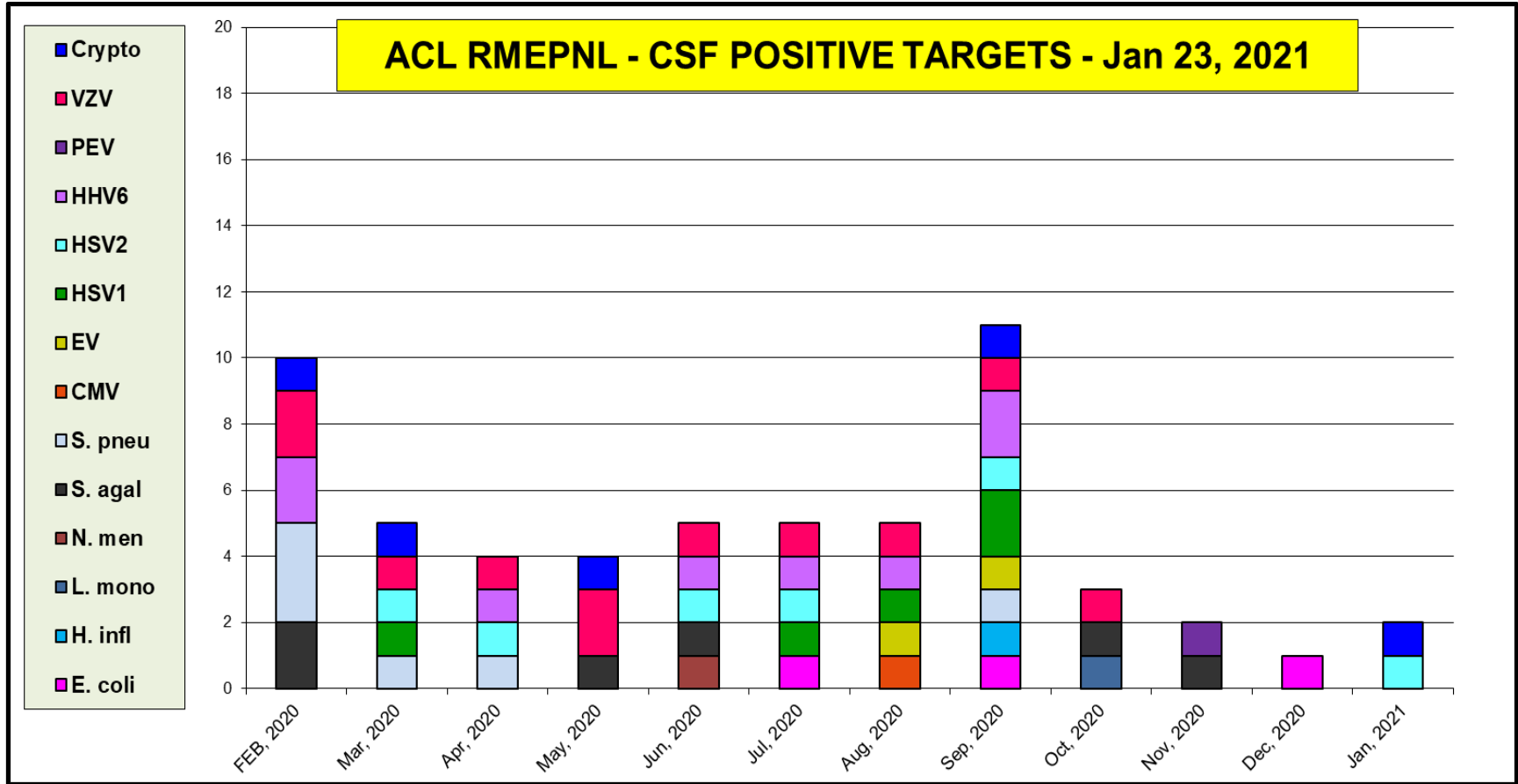
2017-18 2018-19 2019-20 2020-21



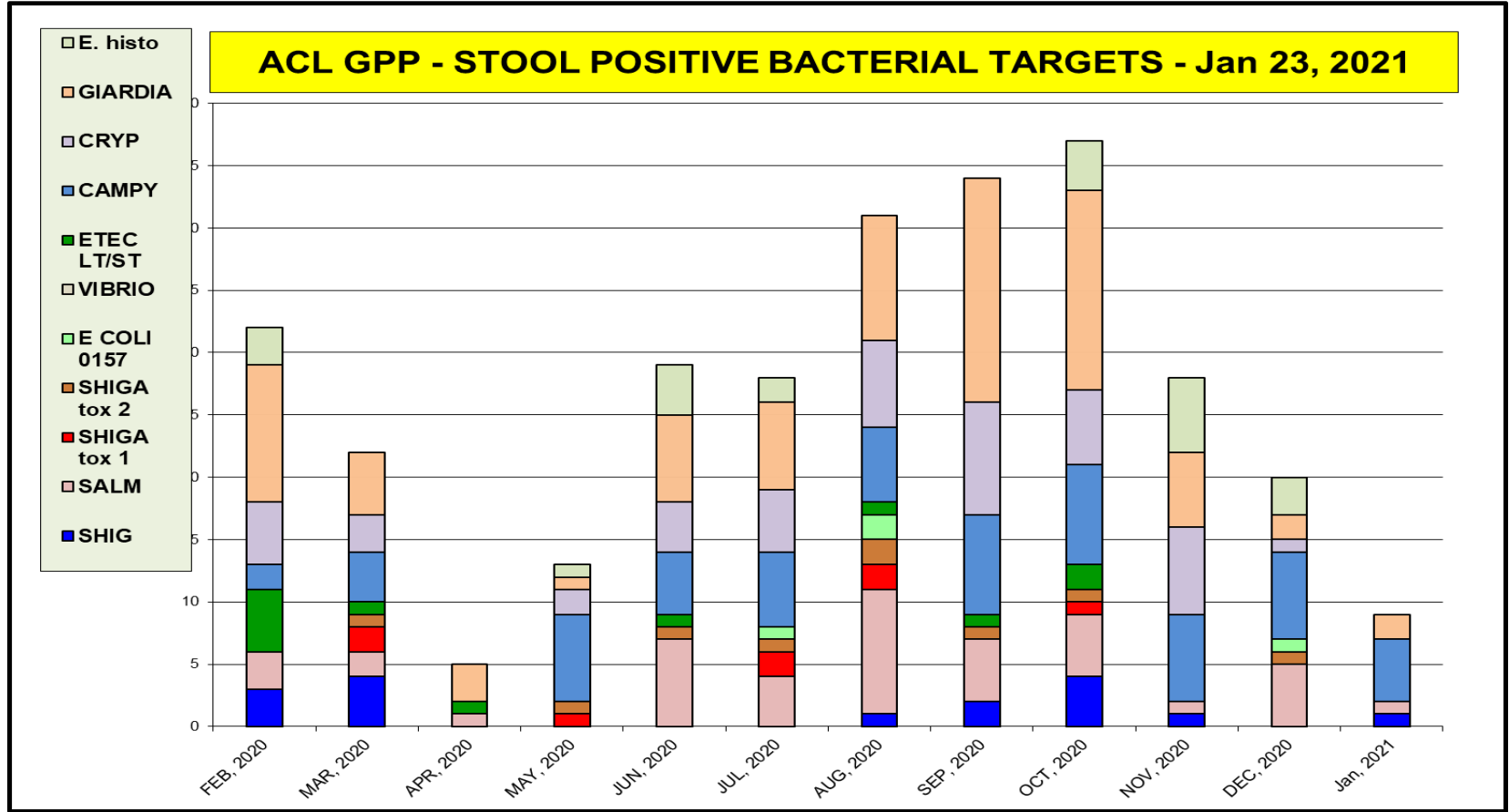
RSV PCR for HHS Region 5 - Chicago (3 week average)



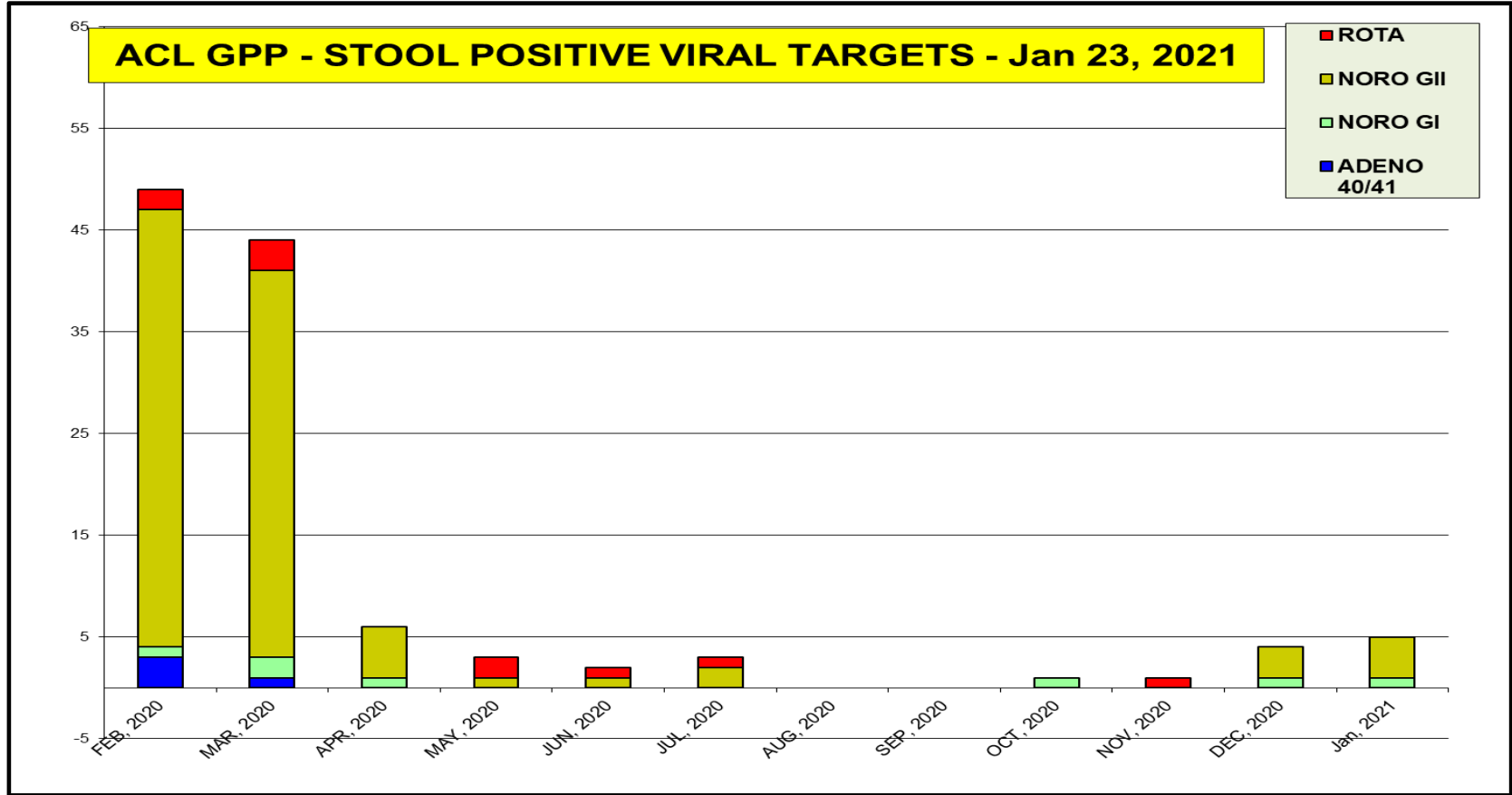
CSF targets positivity rate is 3 %



The most prevalent GI bacterial targets (Campylobacter)



The most prevalent GI viral targets – Norovirus 1%



Women's Health - Jan 23, 2021 positivity rate (%)				
Bacterial Vag.	Candida spp.	Candida glab.	Trich. vag	M. genitalium
36	23	2	2	10

