

ACL Laboratories COVID-19 and Influenza Activity Report

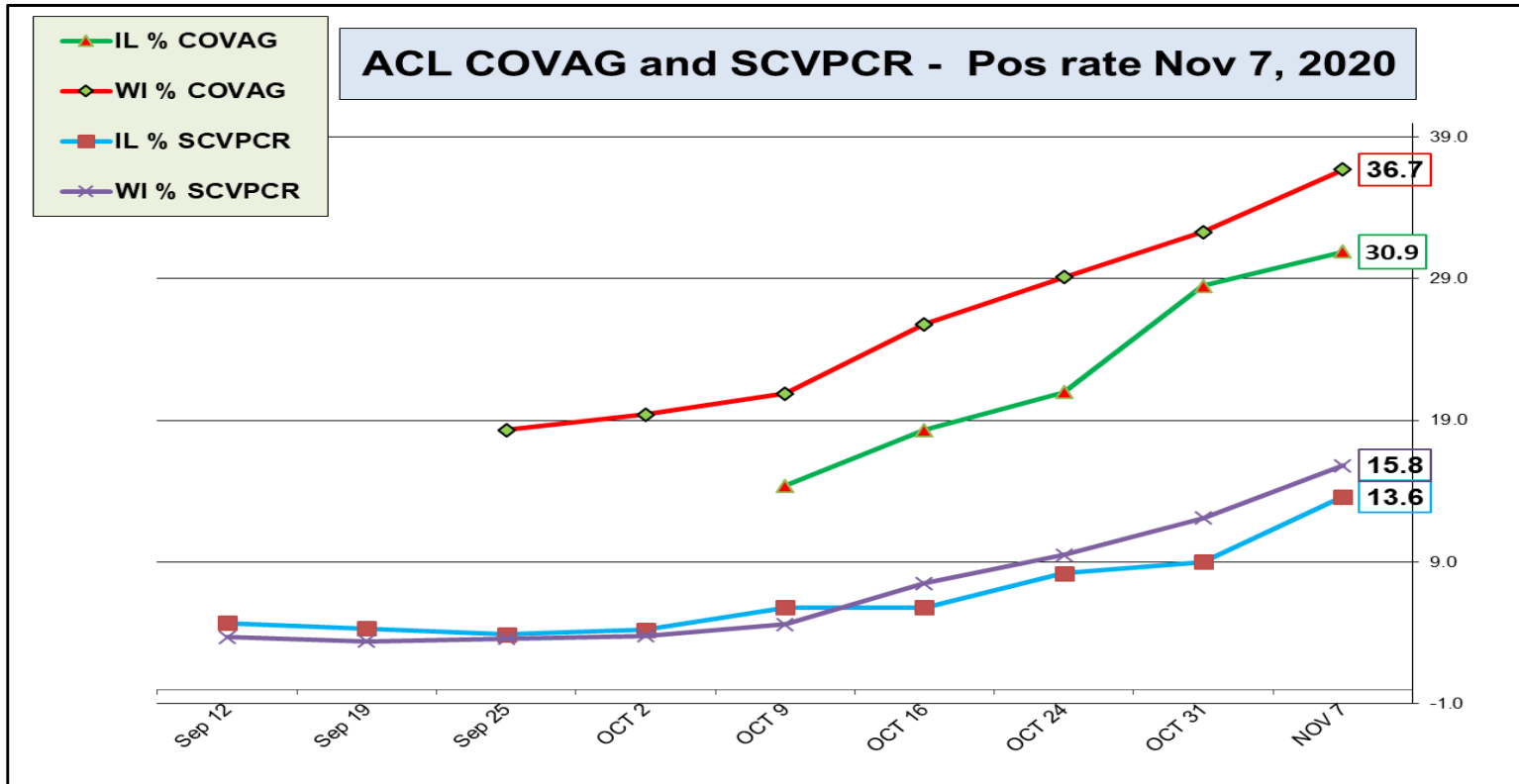
Updated: November 7, 2020



Respiratory Pathogens - Nov 7, 2020

Week	InfA-H1	InfA-H3	2009 H1N1	Inf B	RSV	All Para	EV/ Rhino	Meta pneumo	Adeno	All Corona	Bocca	Myc. pneumo	Chlam. pneumo.	Leg. pneumo.	BP/ BPP	Total Pos	POS FLU	Total	ACL RPPNL	US %FLU	IL/WI PCR	ACL FLUPCR
Nov 7	0	0	0	0	0	0	9	0	0	0	2	0	0	0	0	11	0	96	0.0	n/a	n/a	0.0
Oct 31	0	0	0	0	0	0	7	0	0	0	4	0	0	0	0	11	0	233	0.0	0.1	0.2	0.0
Oct 23	0	0	0	0	0	0	12	3	2	0	2	0	0	0	0	19	0	173	0.0	0.2	0.4	0.0
Oct 16	0	0	0	0	0	0	14	1	1	0	2	0	0	0	0	17	0	185	0.0	0.3	0.2	0.0
Oct 9	0	0	0	0	0	0	9	2	0	0	3	0	0	0	0	14	0	64	0.0	0.3	0.3	0.0
Oct 2	0	0	0	0	0	0	5	0	0	0	1	0	0	1	0	7	0	65	0.0	0.3	0.2	0.0
Sep 25	0	0	0	0	0	0	7	0	2	0	0	0	0	2	0	11	0	111	0.0	0.3	0.0	0.0
Sep 19	0	0	0	0	0	0	4	0	0	0	0	0	0	0	0	4	0	28	0.0	0.4	0.3	0.0
Sep 12	0	0	0	0	0	0	0	1	0	0	0	0	0	0	0	1	0	58	0.0	0.2	0.0	0.0
Sep 4	0	0	0	0	0	0	2	0	0	0	0	0	0	0	0	2	0	146	0.0	0.2	0.5	0.0
Aug 28	0	0	0	0	0	0	3	0	0	0	0	0	0	1	0	4	0	55	0.0	0.3	0.4	0.0

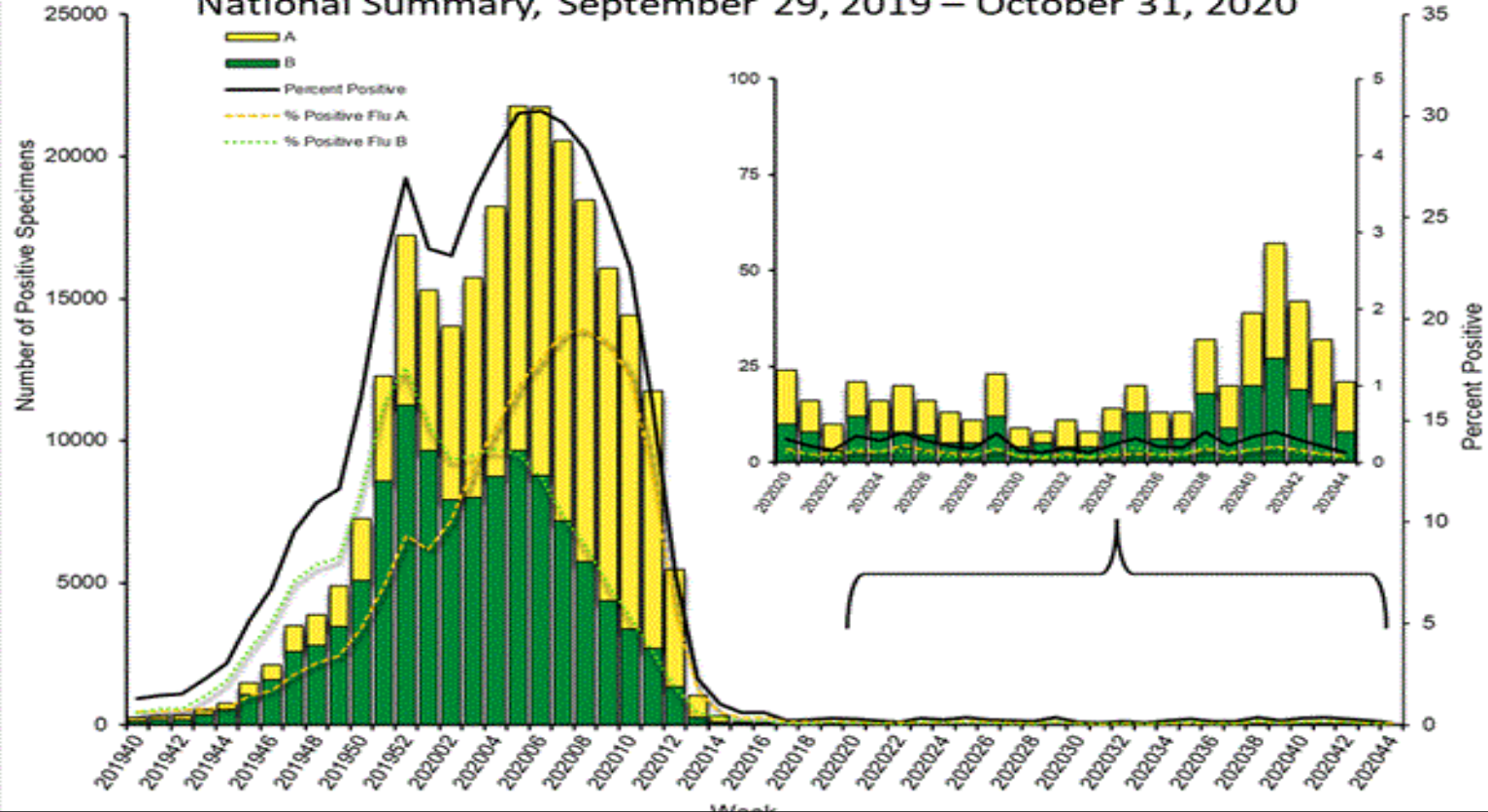
SARS-COV-2					RSV				Influenza	
Week	IL % SCVPCR	WI % SCVPCR	IL % COVAG	WI % COVAG	IL % RSVPCR	WI % RSVPCR	IL % RSVAG	WI % RSVAG	IL % FLUPCR	WI % FLUPCR
NOV 7	13.6	15.8	30.9	36.7	0	0	0	0	0	0
OCT 31	9.0	12.1	28.5	32.3	0	0	0	0	0	0
OCT 24	8.2	9.5	21.0	29.1	0	0	0	0	0	0
OCT 16	5.8	7.5	18.3	25.8	0	0	0	0	0	0
OCT 9	5.8	4.6	14.4	20.9	0	0	0	0	0	0
OCT 2	4.2	3.8	n/a	19.4	0	0	0	0	0	0
Sep 25	3.9	3.6	n/a	18.3	0	0	0	0	0	0
Sep 19	4.3	3.4	n/a	n/a	0	0	0	0	0	0
Sep 12	4.7	3.7	n/a	n/a	0	0	0	0	0	0
Sep 4	4.4	3.3	n/a	n/a	0	0	0	0	0	0
Aug 28	4.6	3.5	n/a	n/a	0	0	0	0	0	0
Aug 21	4.4	3.6	n/a	n/a	0	0	0	0	0	0



COVAG Antigen rapid testing – is performed at **Urgent Care** sites.

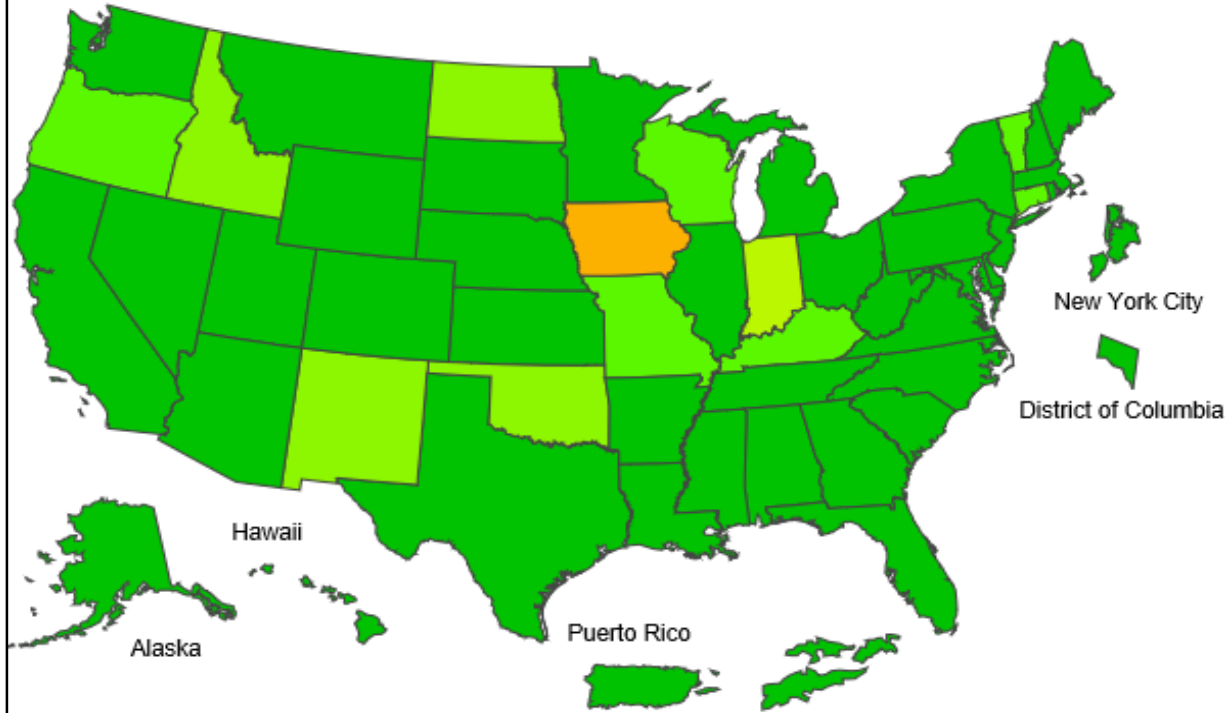
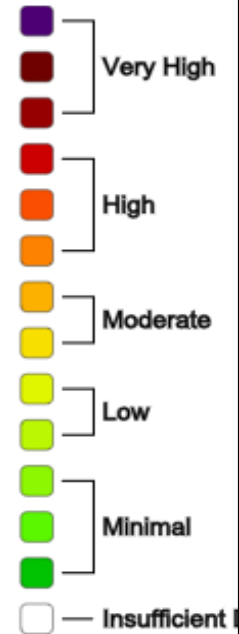
SCVPCR - Rapid PCR - test is performed using Cepheid PCR at AAH **Hospital** sites.

Influenza Positive Tests Reported to CDC by U.S. Clinical Laboratories, National Summary, September 29, 2019 – October 31, 2020

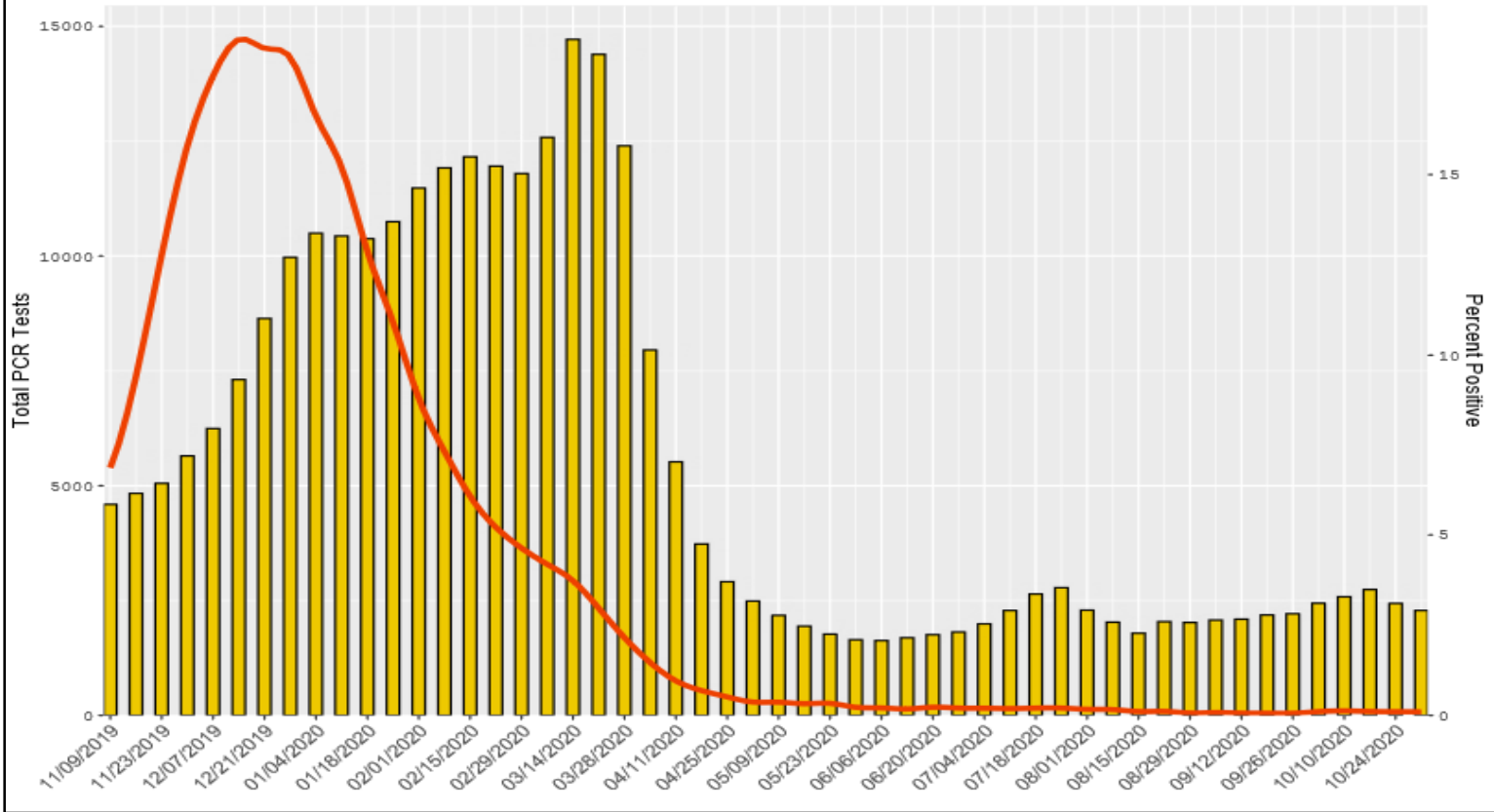


2020-21 Influenza Season Week 44 ending Oct 31, 2020

ILI Activity Level

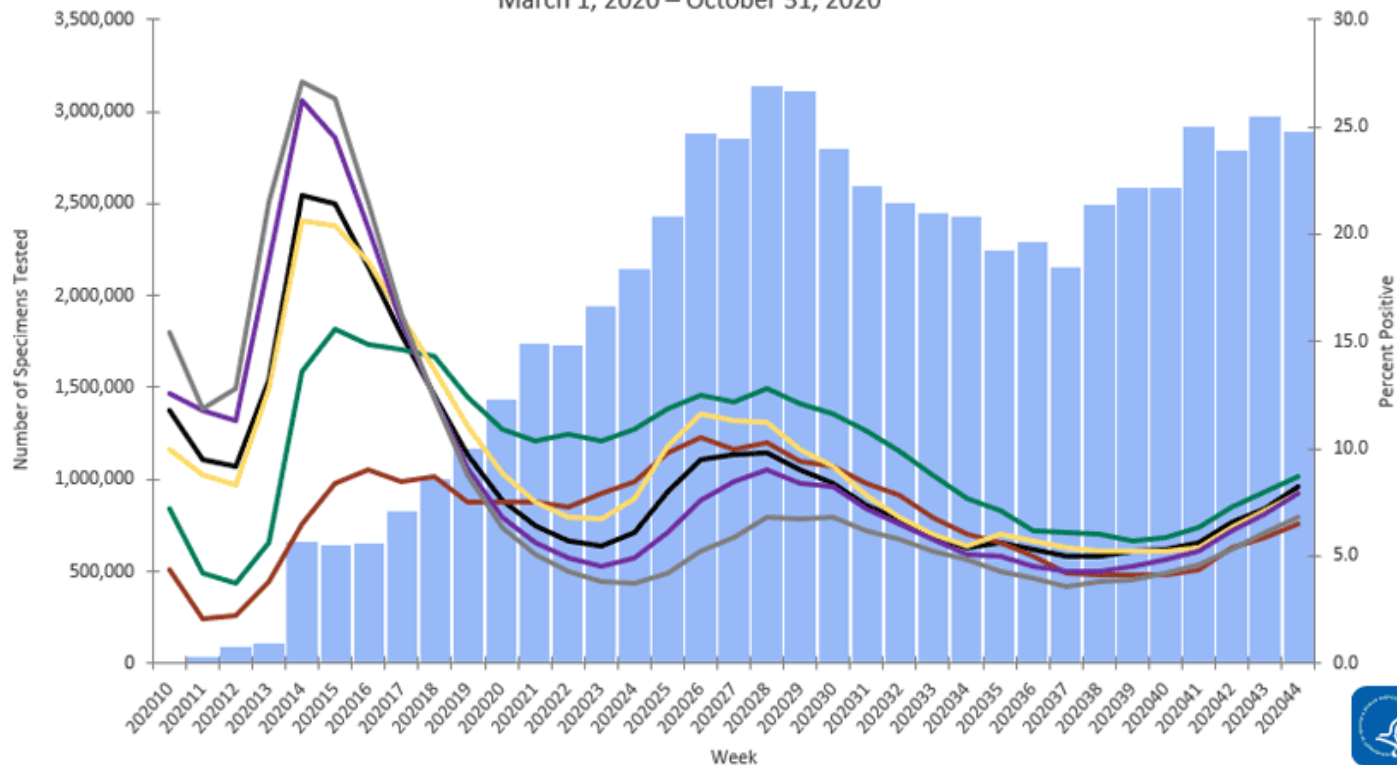


RSV PCR for HHS Region 5 - Chicago (3 week average)



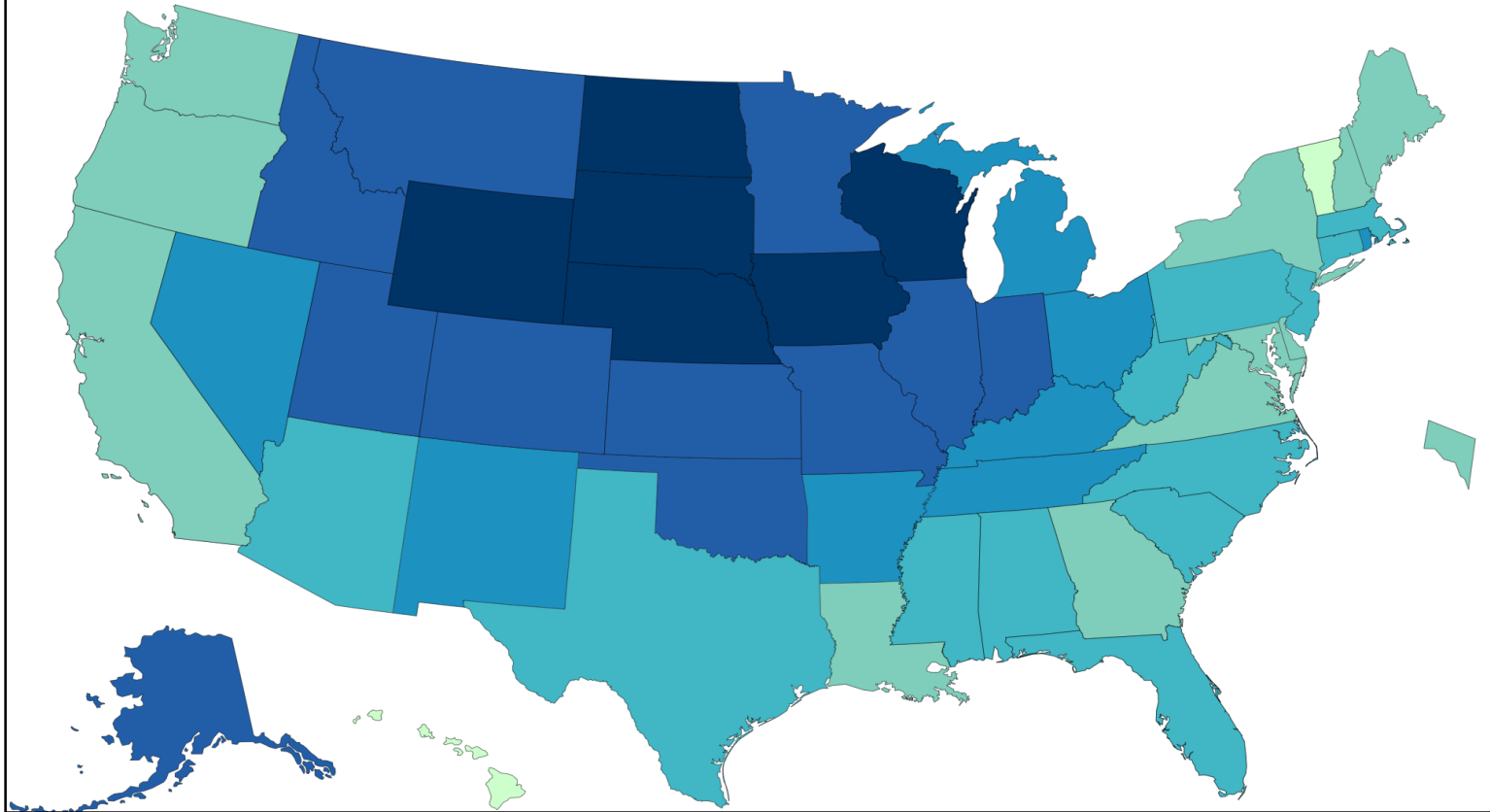
Number of Specimens Tested and Percent Positive for SARS- CoV-2: Combined Laboratories Reporting to CDC (Public Health Laboratories and a Subset of Commercial and Clinical Laboratories)

March 1, 2020 – October 31, 2020

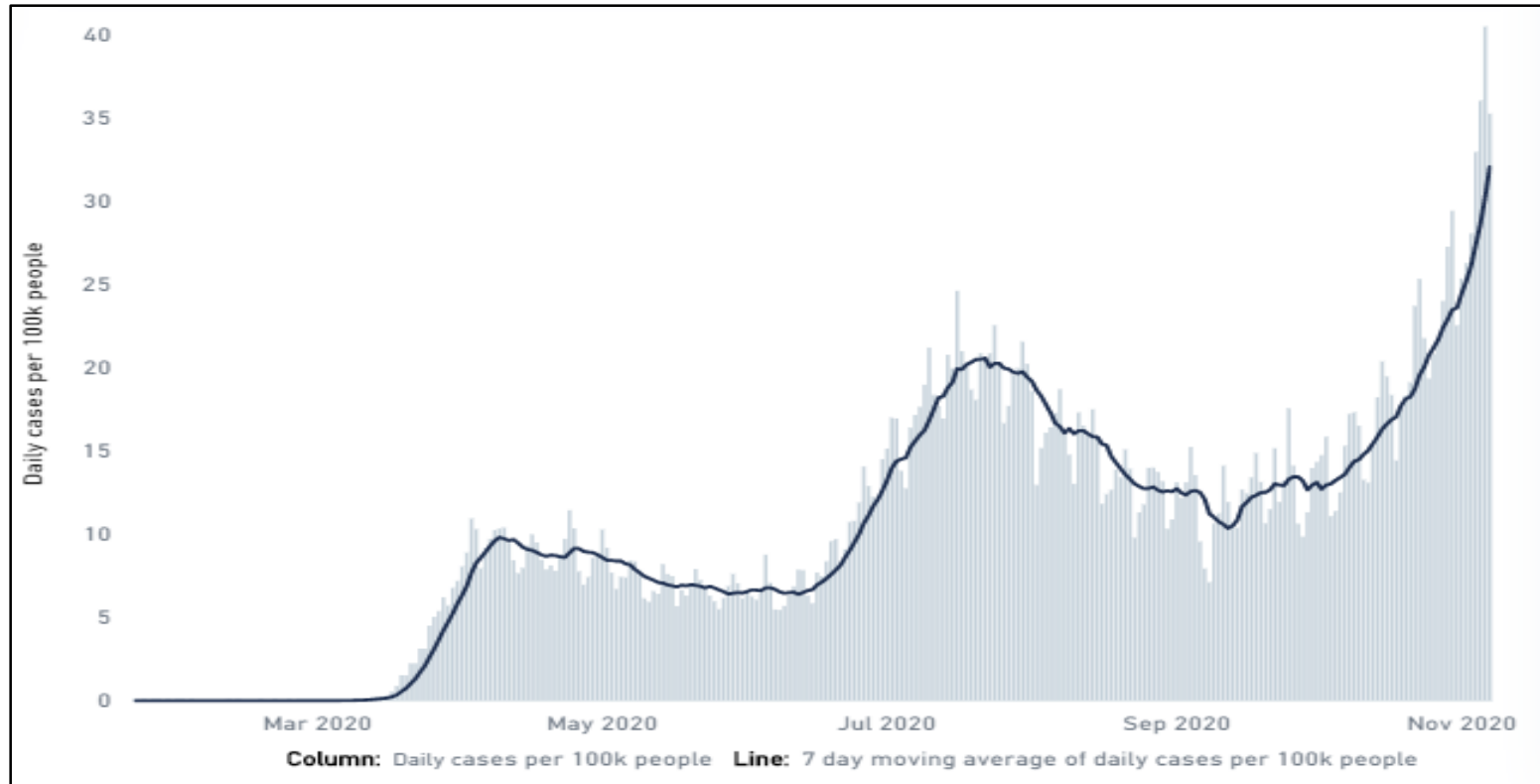


■ Specimens Tested
 — Percent Pos. Overall
 — Percent Pos. 0-4 yrs
 — Percent Pos. 5-17 yrs
 — Percent Pos. 18-49 yrs
 — Percent Pos. 50-64 yrs
 — Percent Pos. 65+ yrs

US COVID-19 Case Rate Reported to the CDC in the Last 7 Days, by State/Territory (cases per 100K)

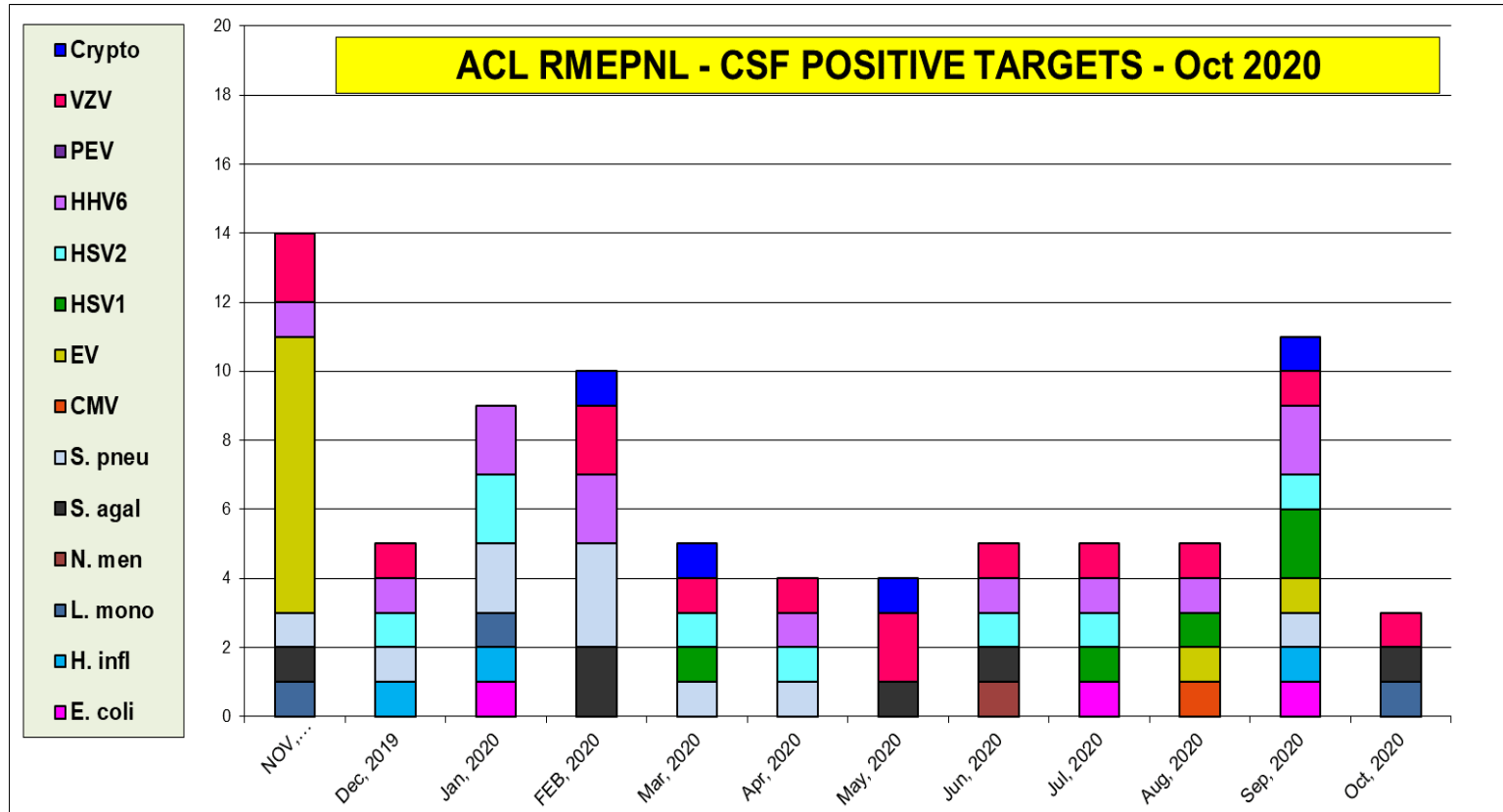


Number of daily COVID-19 cases in US - Johns Hopkins University website

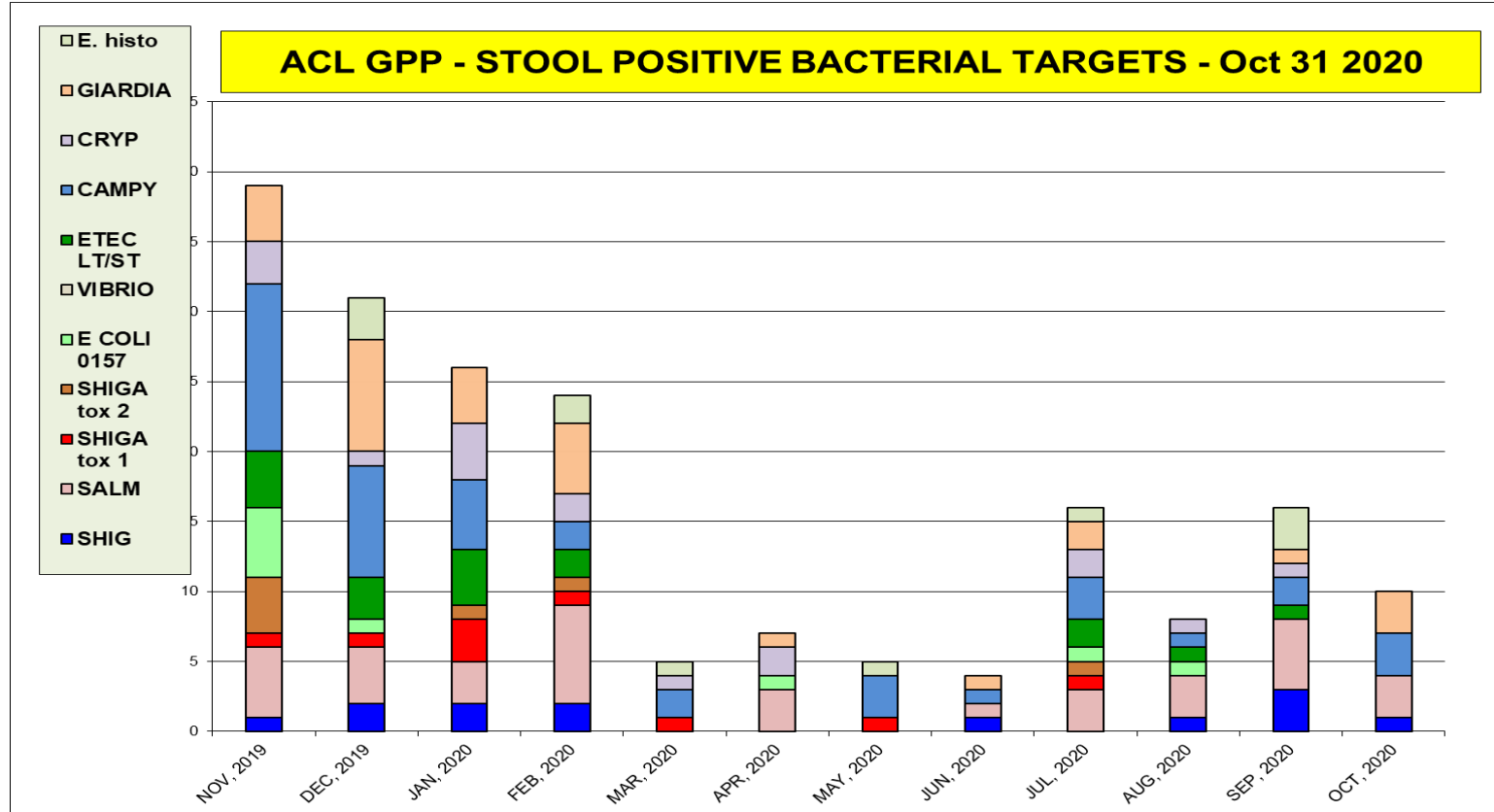


<https://www.arcgis.com/apps/opsdashboard/index.html#/bda7594740fd40299423467b48e9ecf6>

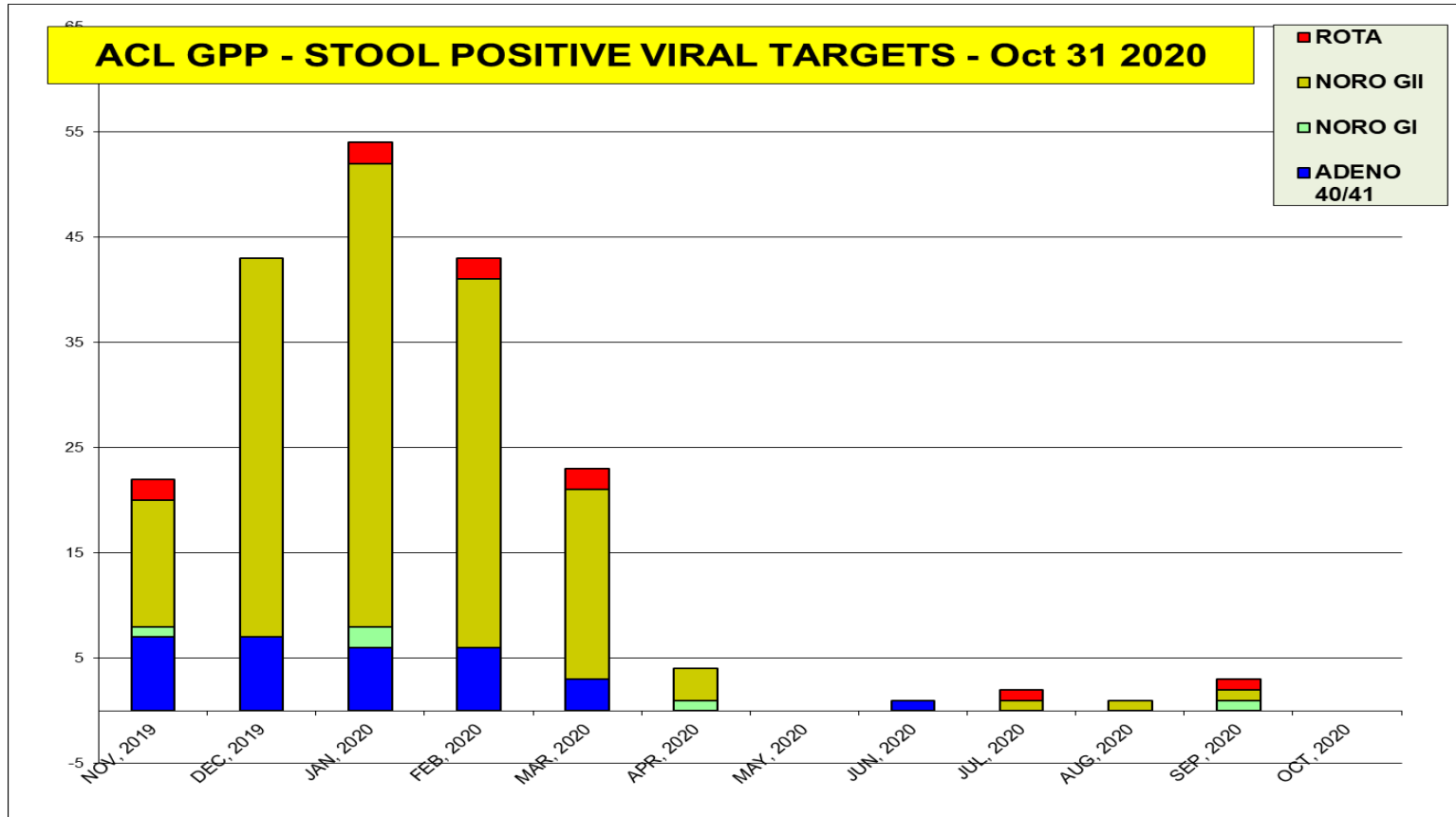
CSF targets positivity rate is 3 %



The most prevalent GI bacterial targets (**Salmonella** and **Campy**)



The most prevalent GI viral targets - none



Women's Health - Oct 2020 positivity rate (%)

Bacterial Vag.	Candida spp.	Candida glab.	Trich. vag	M. genitalium
36	26	2	7	4

