

# ACL Laboratories COVID-19 and Influenza Activity Report

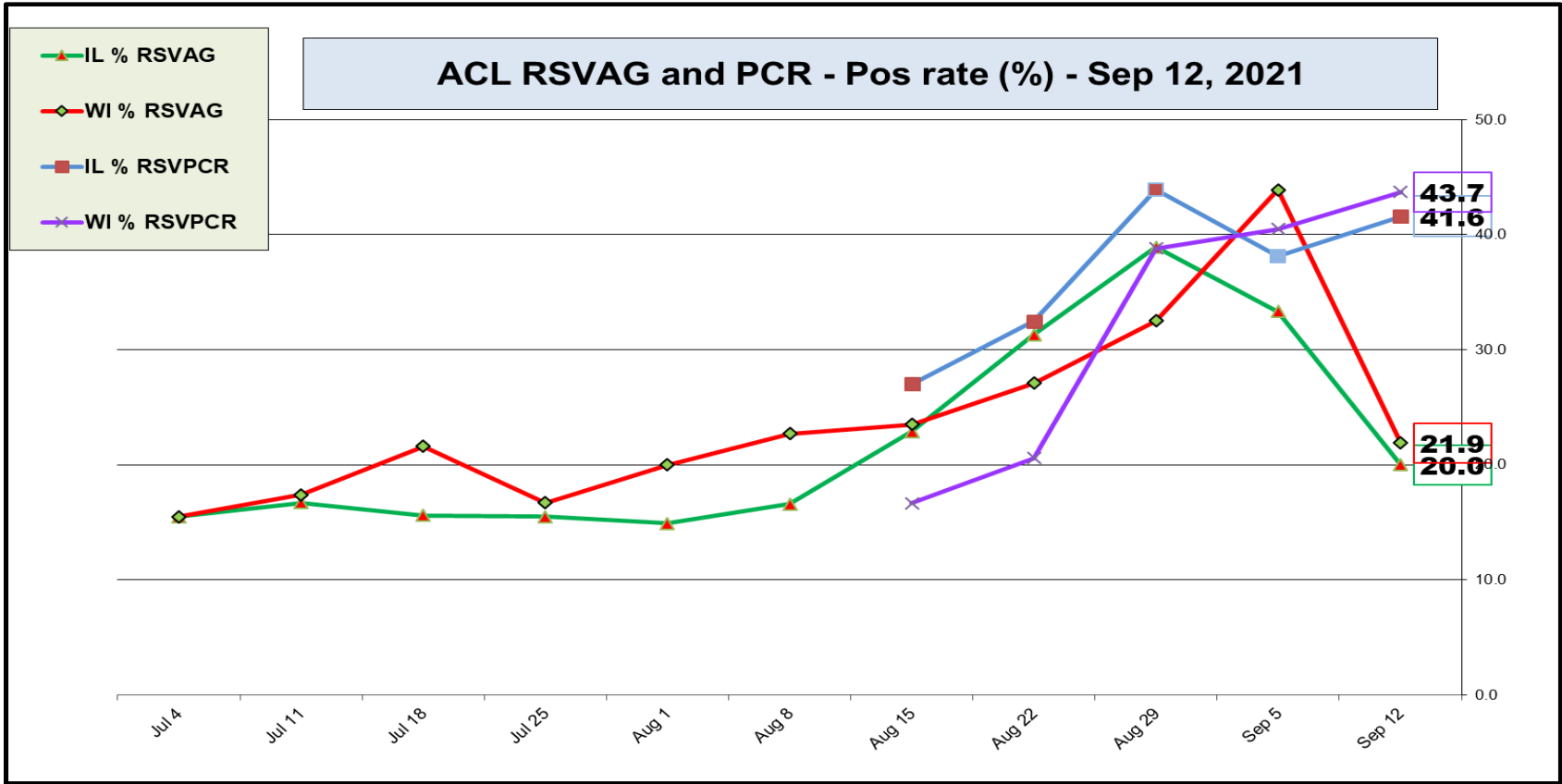
Updated: Sep 12, 2021



## RESPIRATORY PATHOGEN PANEL Sep 12, 2021 Positivity Rate (%)

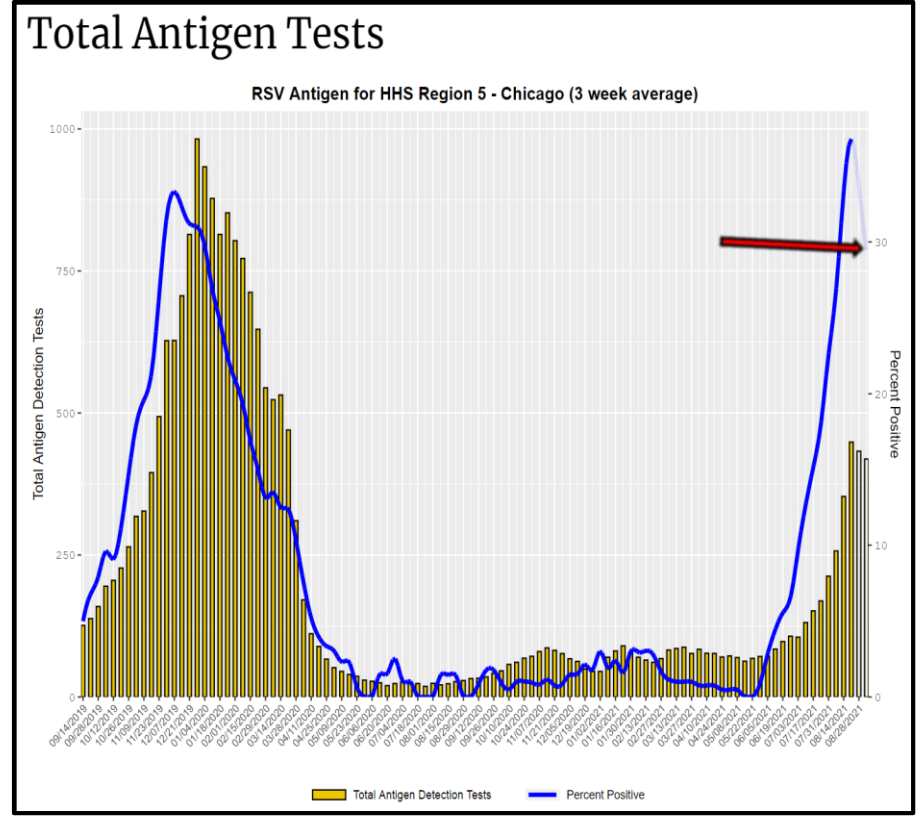
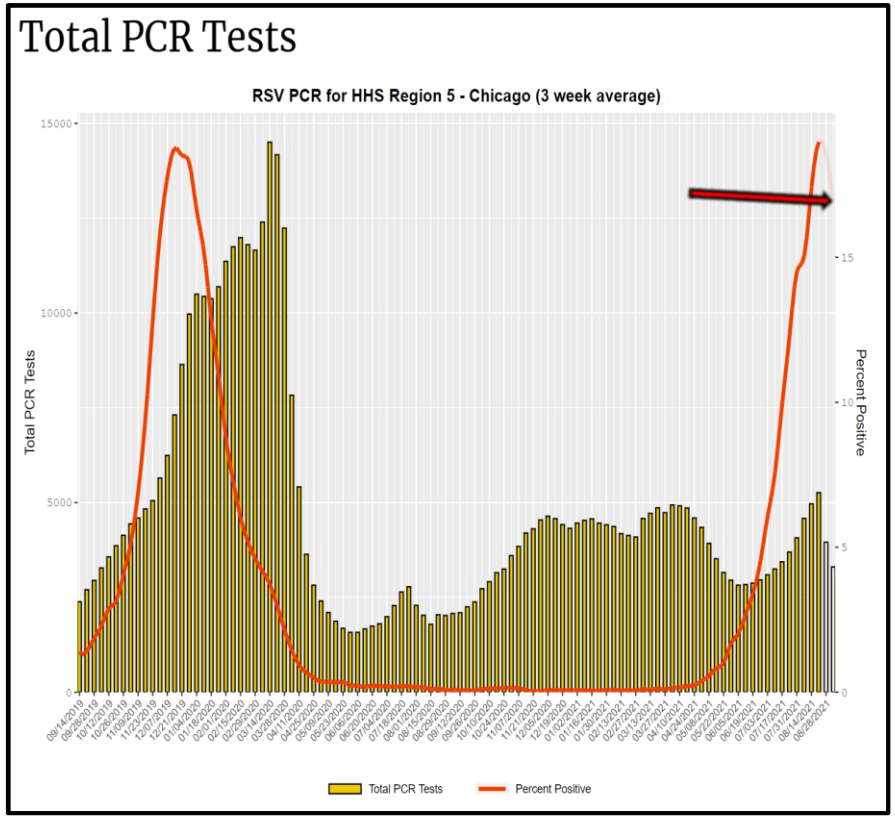
MONTH	FLU A Total	FLU A (H1N1)	2009 (H1N1)	FLU A (H3N2)	FLU B	RSV A	RSV B	RSV Total	PARA 1	PARA 2	PARA 3	PARA 4	Corona 229E	Corona NL63	Corona OC43	Corona HKU1	Meta pneumo	Entero Rhino	ADENO	BOCA	Legio nella	Chla mydia	Mycoplasma	
JAN	0.0	0.0	0.0	0.0	0.0	0.0	0.0	0.0	0.0	0.0	0.0	0.0	0.0	0.0	0.0	0.0	0.0	7.1	0.7	0.3	0.0	0.0	0.0	
FEB	0.0	0.0	0.0	0.0	0.0	0.0	0.2	0.2	0.0	0.0	0.0	0.0	0.0	0.7	0.0	0.0	0.2	6.1	0.2	0.3	0.0	0.0	0.0	
MAR	0.1	0.1	0.1	0.1	0.1	0.1	0.1	0.3	0.4	0.1	0.1	0.3	0.1	1.4	0.9	0.1	0.4	12.2	1.2	0.3	0.0	0.1	0.1	
APR	0.0	0.0	0.0	0.0	0.0	0.0	0.1	0.1	0.0	0.2	0.5	0.0	0.0	2.5	2.9	0.0	0.8	15.3	1.4	1.2	0.0	0.0	0.0	
MAY	0.0	0.0	0.0	0.0	0.0	0.0	0.0	0.0	0.1	0.7	3.9	0.0	0.2	1.4	3.9	0.0	0.0	14.4	1.7	1.4	0.2	0.0	0.1	
JUN	0.0	0.0	0.0	0.0	0.0	0.1	1.8	1.9	0.0	0.3	9.6	0.0	0.3	0.4	2.4	0.0	0.1	15.8	1.1	1.8	0.0	0.0	0.1	
JUL	0.0	0.0	0.0	0.0	0.0	1.0	7.2	8.2	0.1	0.5	12.9	0.0	0.1	0.4	1.4	0.0	0.5	18.9	1.6	4.4	0.4	0.0	0.0	
AUG	0.0	0.0	0.0	0.0	0.0	0.8	12.7	13.5	0.0	1.3	6.2	0.1	0.1	0.1	0.5	0.0	0.6	14.1	1.3	3.9	0.0	0.0	0.0	
SEP	0.0	0.0	0.0	0.0	0.0	0.2	4.1	4.3	0.0	0.3	0.5	0.2	0.0	0.0	0.1	0.0	0.3	5.7	0.3	1.7	0.2	0.0	0.0	
OCT																								
NOV																								
DEC																								

Increased prevalence of viruses: **RSV (type B)**



ACL RSV PCR remains the same , EIA pos rate is trending down

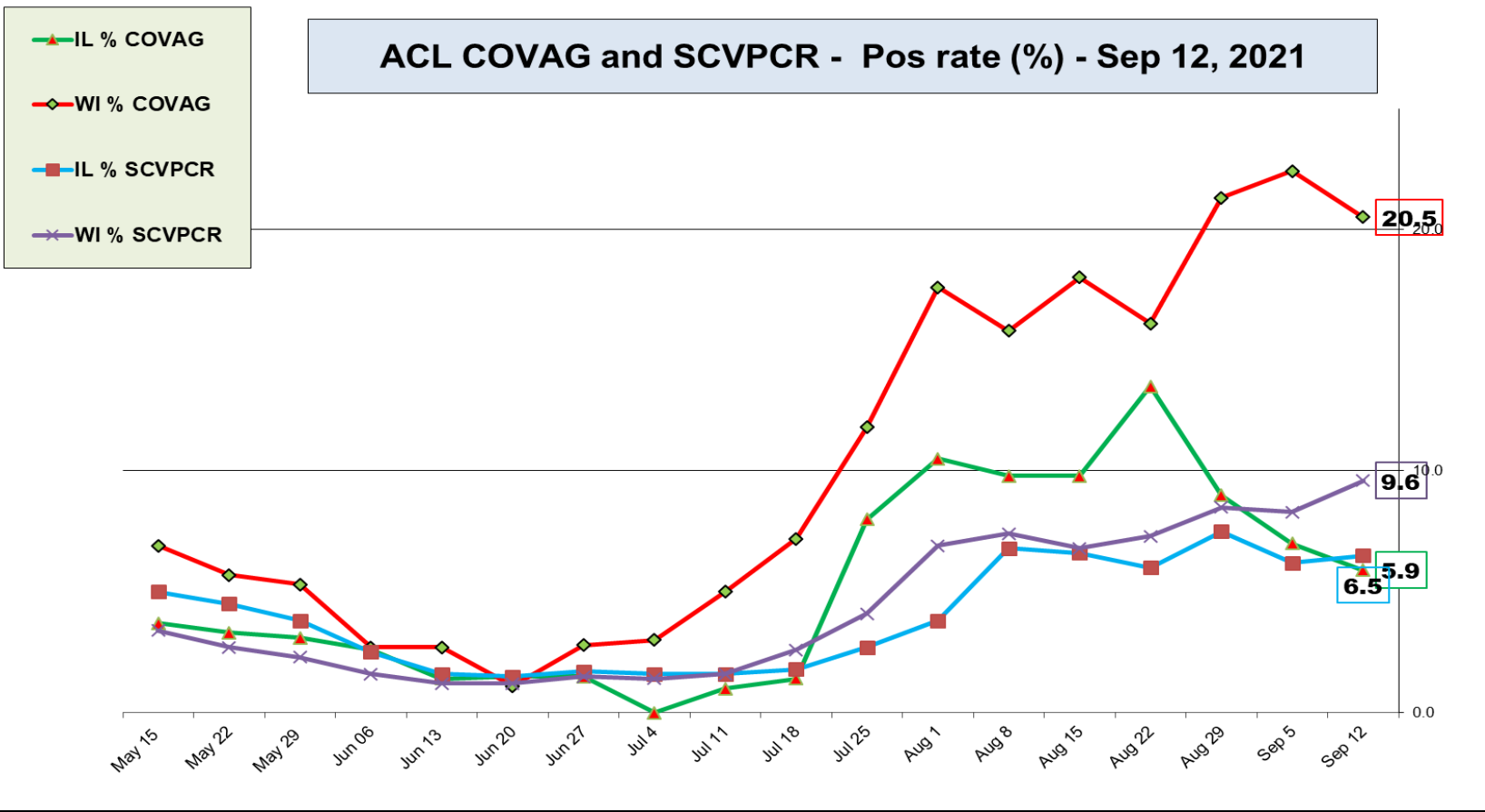
# CDC Data RSV pos rate for Region 5 Chicago - (PCR - 16%↓, Antigen - 30% ↓)



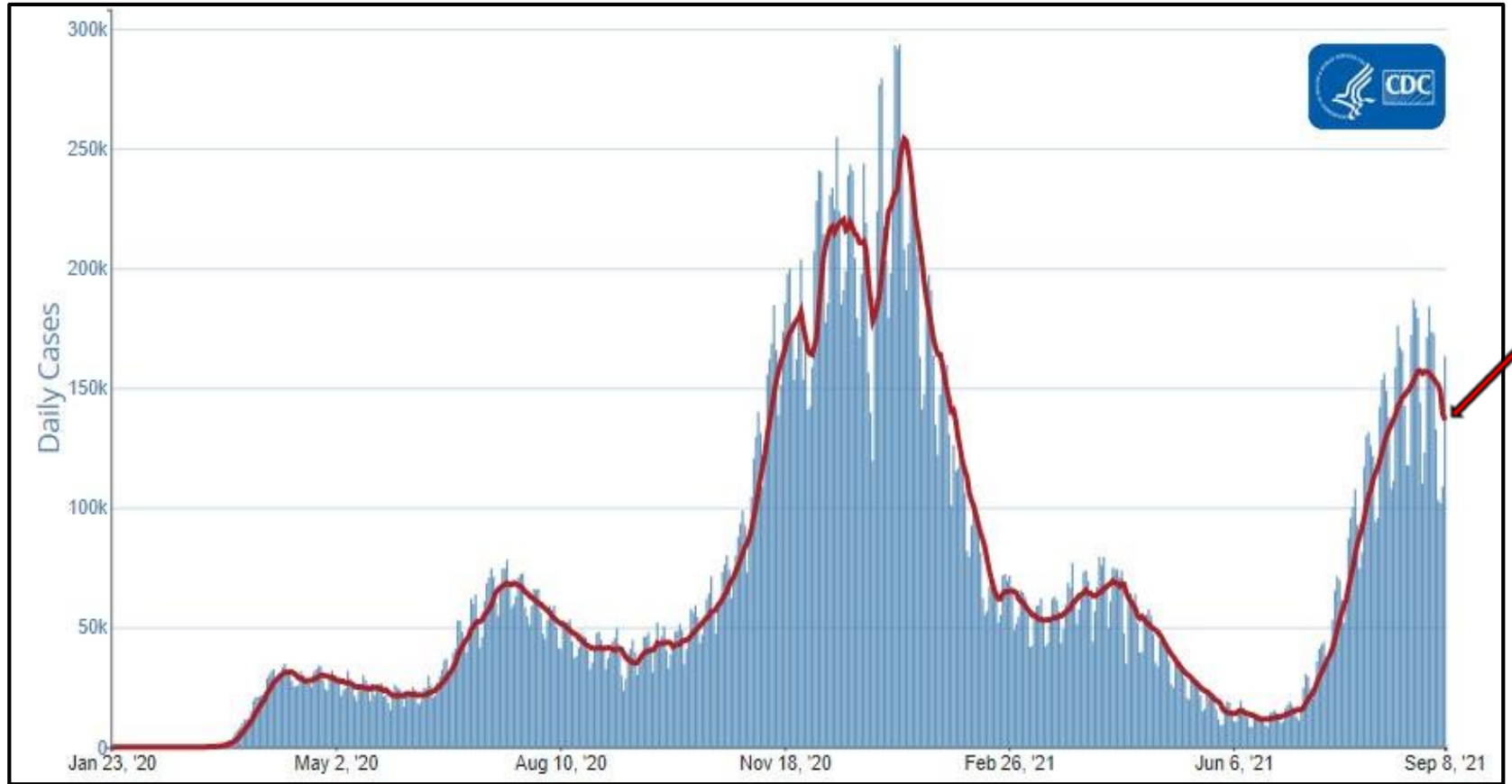
SARS-COV-2					Influenza - no activity				RSV (Antigen+PCR)			
Week	IL % SCVPCR	WI % SCVPCR	IL % COVAG	WI % COVAG	IL % FLUPCR	WI % FLUPCR	IL % FLUAG	WI % FLUAG	IL % RSVAG	WI % RSVAG	IL % RSVPCR	WI % RSVPCR
Sep 12	6.5	9.6	5.9	20.5	0	0	0	0	20.0	21.9	41.6	43.7
Sep 5	6.2	8.3	7.0	22.4	0	0	0	0	33.3	43.9	38.1	40.5
Aug 29	7.5	8.5	9.0	21.3	0	0	0	0	38.9	32.5	43.9	38.8
Aug 22	6.0	7.3	13.5	16.1	0	0	0	0	31.3	27.1	32.5	20.6
Aug 15	6.6	6.8	9.8	18.0	0	0	0	0	22.9	23.5	27.0	16.7
Aug 8	6.8	7.4	9.8	15.8	0	0	0	0	16.6	22.7	25.7	16.9
Aug 1	3.8	6.9	10.5	17.6	0	0	0	0	14.9	20.0	0.0	0.0
Jul 25	2.7	4.1	8.0	11.8	0	0	0	0	15.5	16.7	0.0	0.0
Jul 18	1.8	2.6	1.4	7.2	0	0	0	0	15.6	21.6	0.0	0.0
Jul 11	1.6	1.6	1.0	5.0	0	0	0	0	16.7	17.4	0.0	0.0
Jul 4	1.6	1.4	0.0	3.0	0	0	0	0	15.5	15.5	0.0	0.0
Jun 27	1.7	1.5	1.5	2.8	0	0	0	0	11.1	8.3	0.0	0.0
Jun 20	1.5	1.2	1.5	1.1	0	0	0	0	7.1	3.2	0.0	0.0

ACL RSV tests results are consistent with “atypical” summer RSV outbreak

## ACL COVAG and SCVPCR - Pos rate (%) - Sep 12, 2021



# Sep 8, 2021 - daily COVID-19 cases in US - CDC



# Sep 4, 2021 – SARS-CoV-2 circulating in the US (~99.4% % Delta variants)

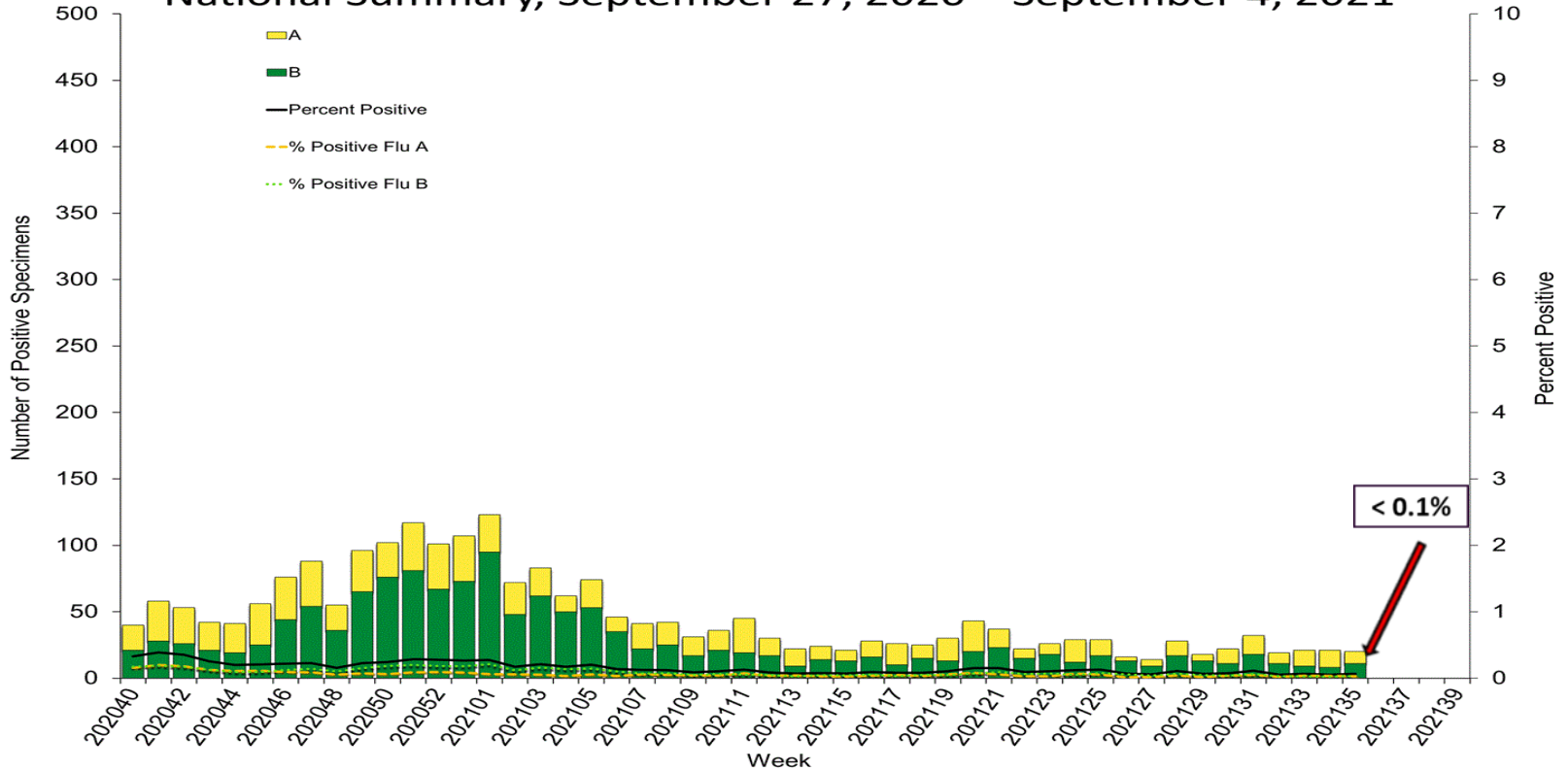




## US vaccination status CDC | Data as of: Sep 9, 2021

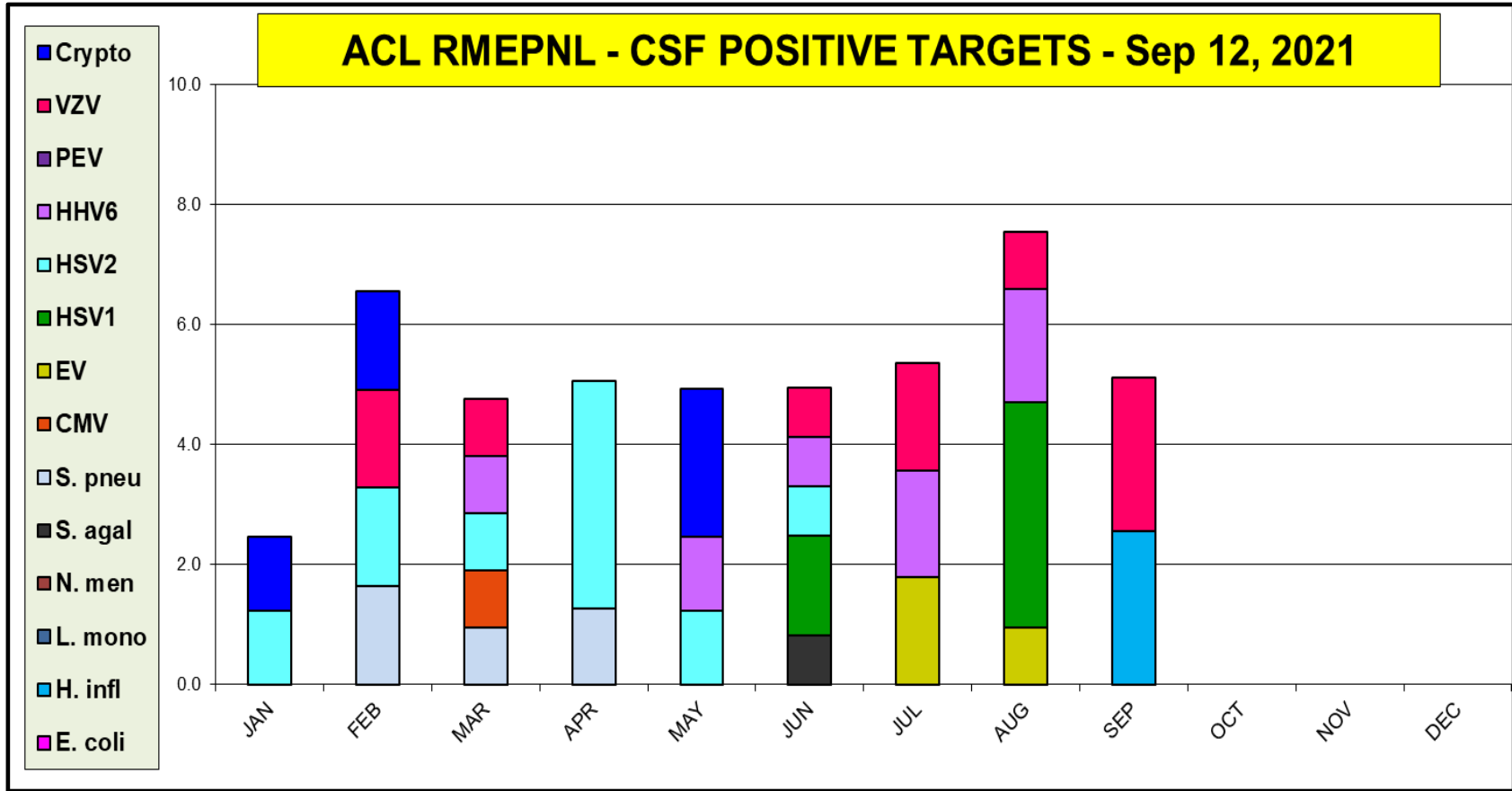
<b>377,622,065</b> Vaccines Administered	
<b>208,305,270</b> People who received at least one dose	<b>177,433,044</b> People who are fully vaccinated*
<b>62.7%</b> Percentage of the US population that has received at least one dose	<b>53.4%</b> Percentage of the US population that has been fully vaccinated*

# Influenza Positive Tests Reported to CDC by U.S. Clinical Laboratories, National Summary, September 27, 2020 – September 4, 2021

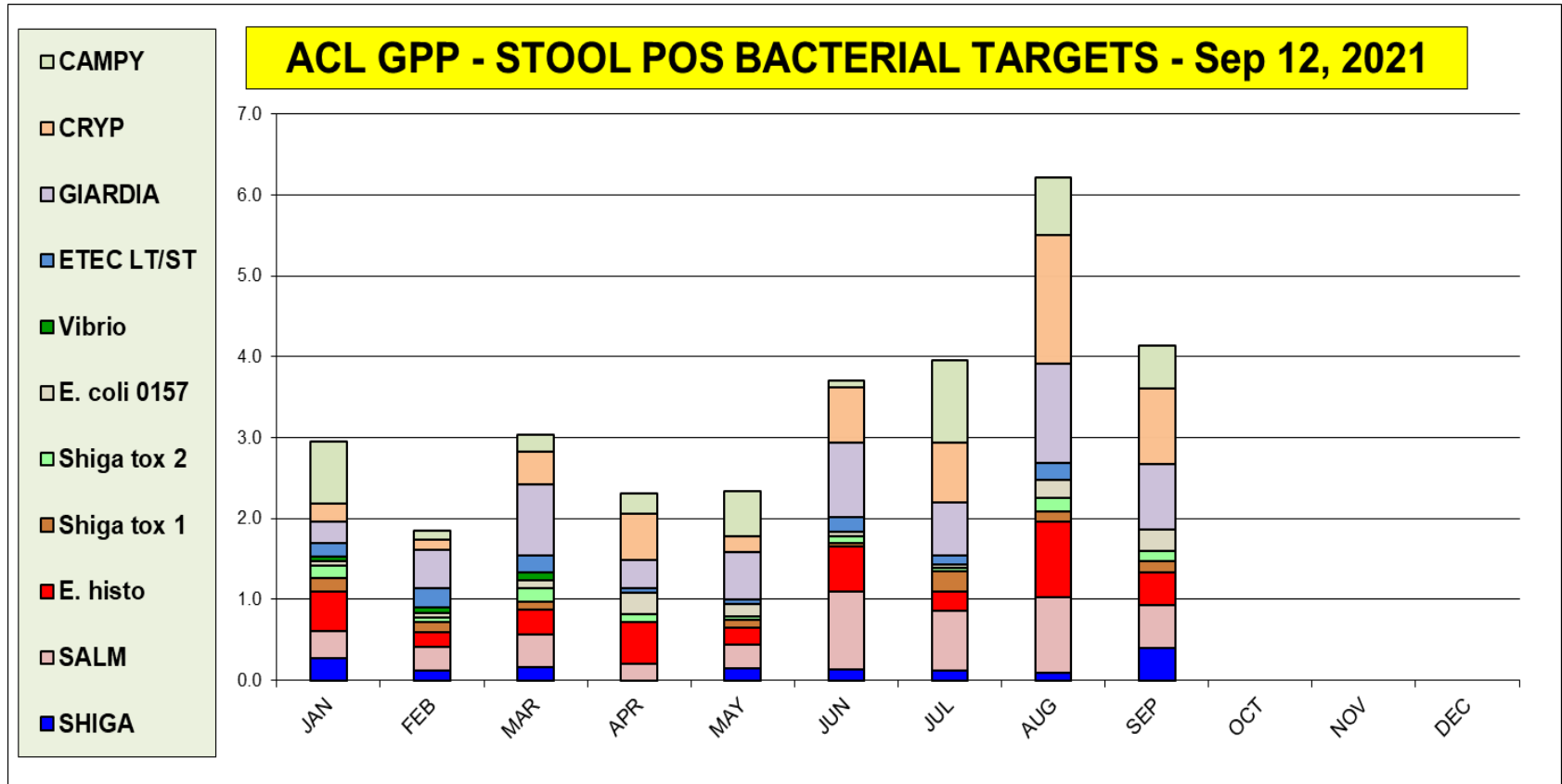




CSF targets positivity rate is 5.1% (the most prevalent is VZV)



# The most prevalent GI bacterial target is (Cryptosporidium 0.9%)



# The most prevalent GI viral target is – (Norovirus II – 0.5%)

