

# ACL Laboratories COVID-19 and Influenza Activity Report

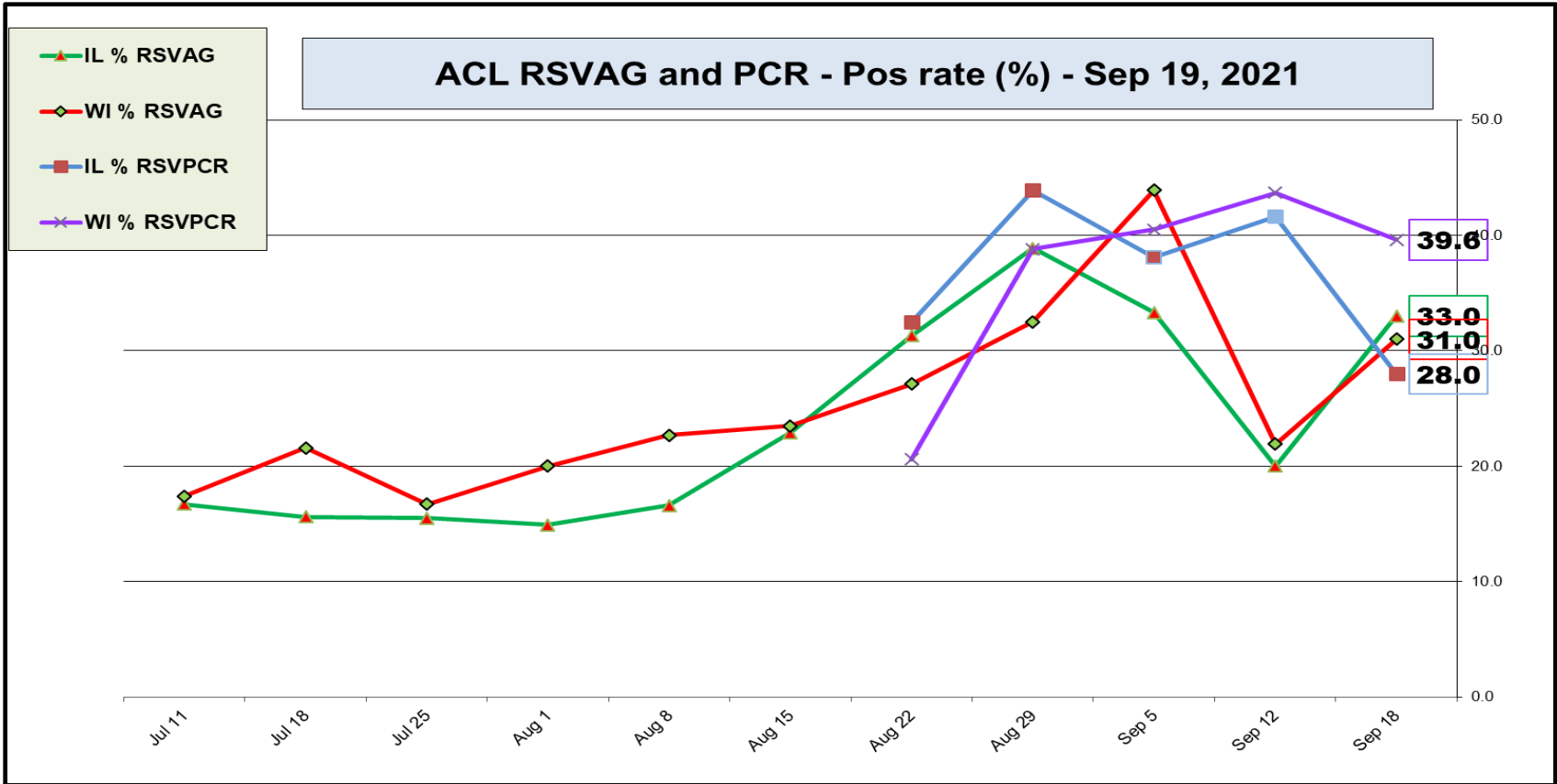
Updated: Sep 19, 2021



## RESPIRATORY PATHOGEN PANEL Sep 19, 2021 Positivity Rate (%)

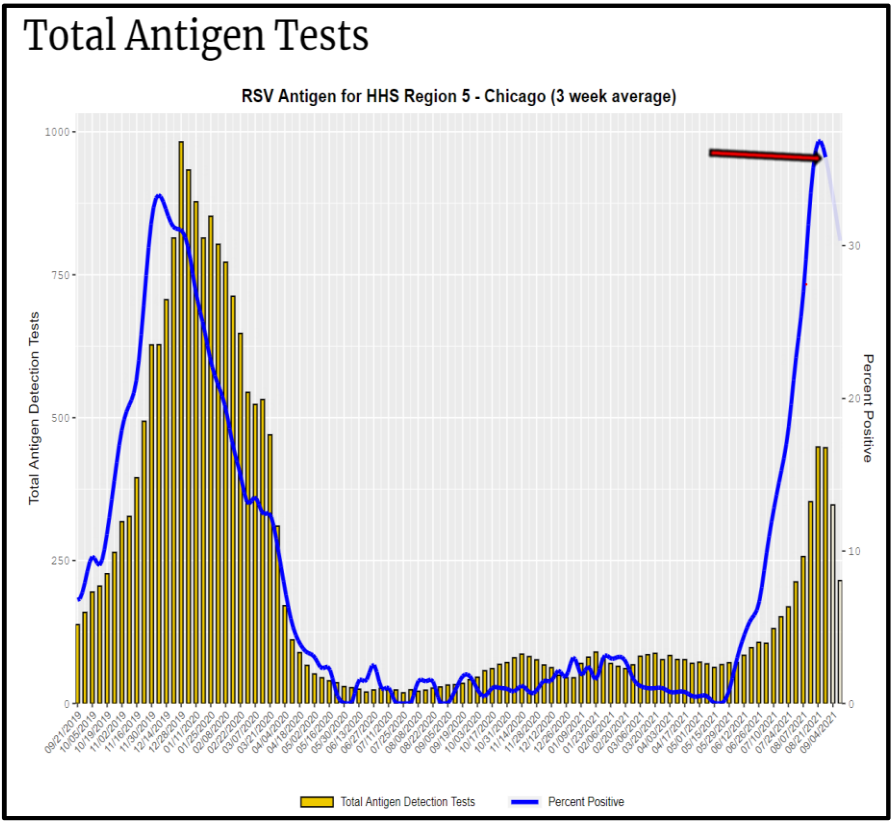
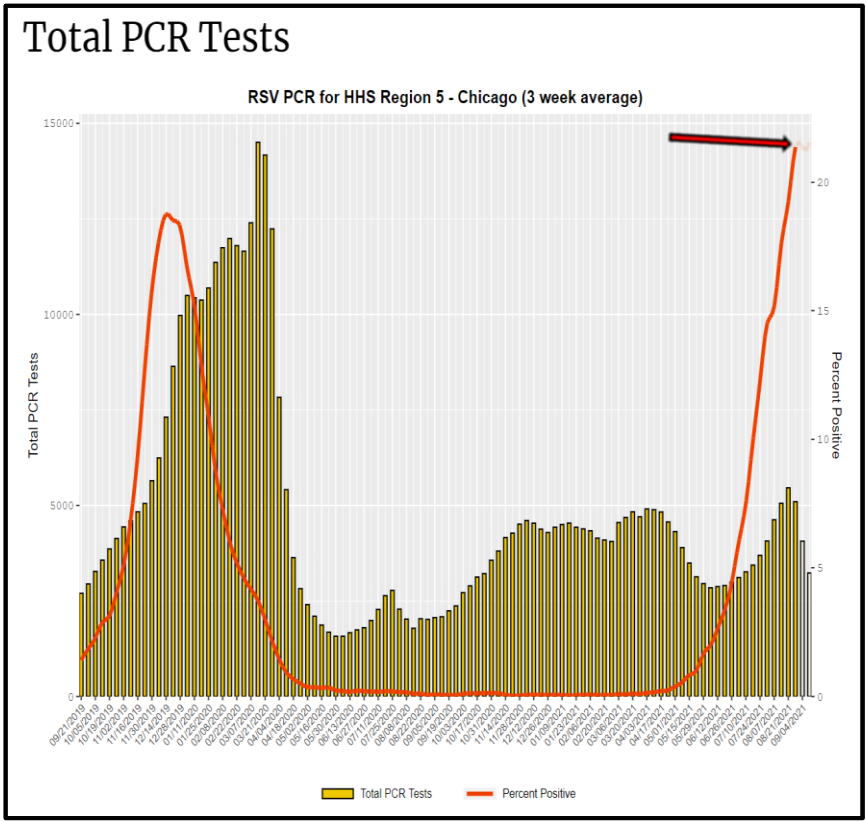
| MONTH | FLU A Total | FLU A (H1N1) | 2009 (H1N1) | FLU A (H3N2) | FLU B | RSV A | RSV B | RSV Total | PARA 1 | PARA 2 | PARA 3 | PARA 4 | Corona 229E | Corona NL63 | Corona OC43 | Corona HKU1 | Meta pneumo | Entero Rhino | ADENO | BOCA | Legio nella | Chla mydia | Mycoplasma |  |
|-------|-------------|--------------|-------------|--------------|-------|-------|-------|-----------|--------|--------|--------|--------|-------------|-------------|-------------|-------------|-------------|--------------|-------|------|-------------|------------|------------|--|
| JAN   | 0.0         | 0.0          | 0.0         | 0.0          | 0.0   | 0.0   | 0.0   | 0.0       | 0.0    | 0.0    | 0.0    | 0.0    | 0.0         | 0.0         | 0.0         | 0.0         | 0.0         | 7.1          | 0.7   | 0.3  | 0.0         | 0.0        | 0.0        |  |
| FEB   | 0.0         | 0.0          | 0.0         | 0.0          | 0.0   | 0.0   | 0.2   | 0.2       | 0.0    | 0.0    | 0.0    | 0.0    | 0.0         | 0.7         | 0.0         | 0.0         | 0.2         | 6.1          | 0.2   | 0.3  | 0.0         | 0.0        | 0.0        |  |
| MAR   | 0.1         | 0.1          | 0.1         | 0.1          | 0.1   | 0.1   | 0.1   | 0.3       | 0.4    | 0.1    | 0.1    | 0.3    | 0.1         | 1.4         | 0.9         | 0.1         | 0.4         | 12.2         | 1.2   | 0.3  | 0.0         | 0.1        | 0.1        |  |
| APR   | 0.0         | 0.0          | 0.0         | 0.0          | 0.0   | 0.0   | 0.1   | 0.1       | 0.0    | 0.2    | 0.5    | 0.0    | 0.0         | 2.5         | 2.9         | 0.0         | 0.8         | 15.3         | 1.4   | 1.2  | 0.0         | 0.0        | 0.0        |  |
| MAY   | 0.0         | 0.0          | 0.0         | 0.0          | 0.0   | 0.0   | 0.0   | 0.0       | 0.1    | 0.7    | 3.9    | 0.0    | 0.2         | 1.4         | 3.9         | 0.0         | 0.0         | 14.4         | 1.7   | 1.4  | 0.2         | 0.0        | 0.1        |  |
| JUN   | 0.0         | 0.0          | 0.0         | 0.0          | 0.0   | 0.1   | 1.8   | 1.9       | 0.0    | 0.3    | 9.6    | 0.0    | 0.3         | 0.4         | 2.4         | 0.0         | 0.1         | 15.8         | 1.1   | 1.8  | 0.0         | 0.0        | 0.1        |  |
| JUL   | 0.0         | 0.0          | 0.0         | 0.0          | 0.0   | 1.0   | 7.2   | 8.2       | 0.1    | 0.5    | 12.9   | 0.0    | 0.1         | 0.4         | 1.4         | 0.0         | 0.5         | 18.9         | 1.6   | 4.4  | 0.4         | 0.0        | 0.0        |  |
| AUG   | 0.0         | 0.0          | 0.0         | 0.0          | 0.0   | 0.8   | 12.7  | 13.5      | 0.0    | 1.3    | 6.2    | 0.1    | 0.1         | 0.1         | 0.5         | 0.0         | 0.6         | 14.1         | 1.3   | 3.9  | 0.0         | 0.0        | 0.0        |  |
| SEP   | 0.0         | 0.0          | 0.0         | 0.0          | 0.0   | 0.5   | 7.3   | 7.8       | 0.0    | 0.5    | 1.3    | 0.2    | 0.0         | 0.0         | 0.3         | 0.0         | 0.6         | 12.5         | 0.4   | 2.9  | 0.2         | 0.0        | 0.1        |  |
| OCT   |             |              |             |              |       |       |       |           |        |        |        |        |             |             |             |             |             |              |       |      |             |            |            |  |
| NOV   |             |              |             |              |       |       |       |           |        |        |        |        |             |             |             |             |             |              |       |      |             |            |            |  |
| DEC   |             |              |             |              |       |       |       |           |        |        |        |        |             |             |             |             |             |              |       |      |             |            |            |  |

Increased prevalence of viruses: **Rhinovirus and RSV**



ACL RSV PCR remains the same , EIA pos rate is trending down

# CDC Data RSV pos rate for Region 5 Chicago - (PCR - 21%↓, Antigen - 39% ↓)

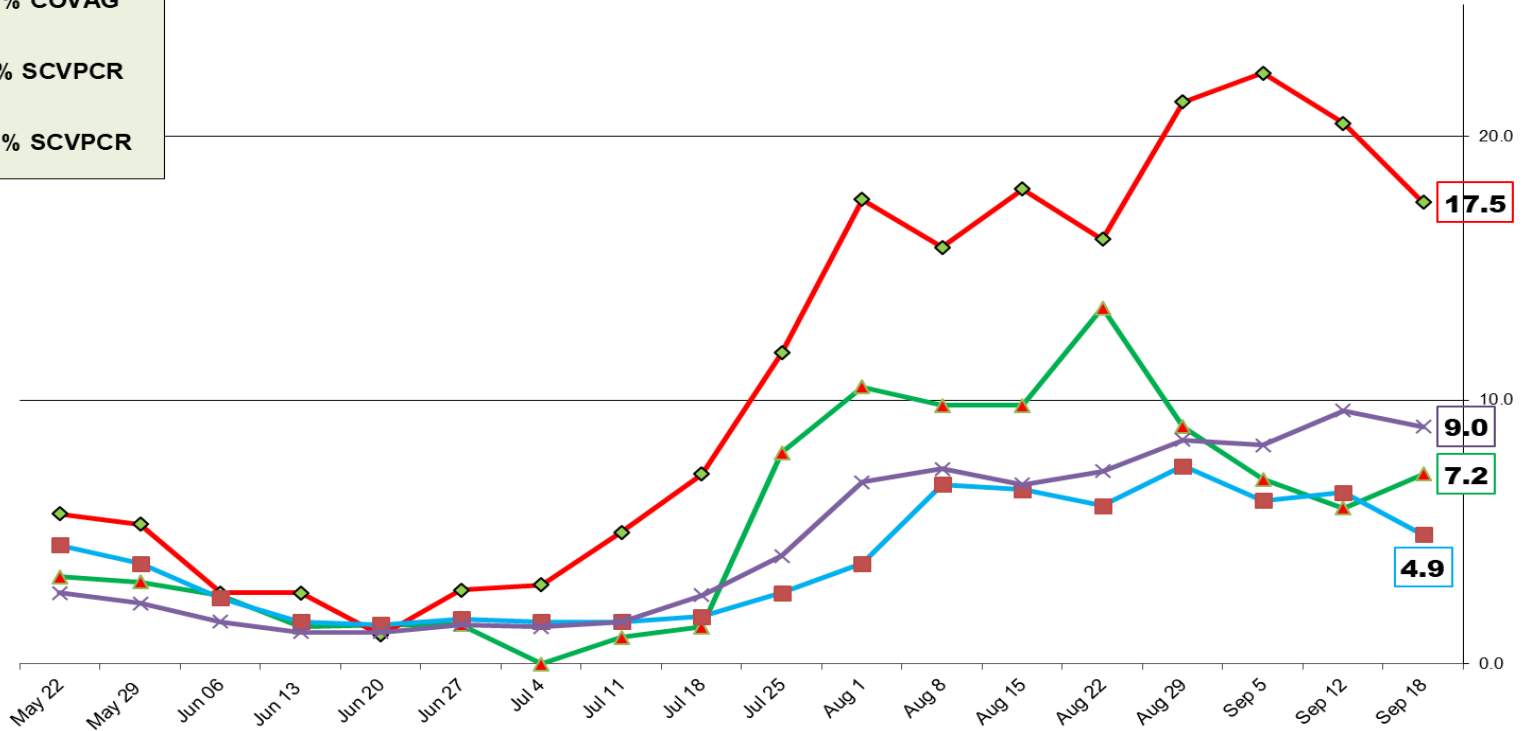


| SARS-COV-2 |                |                |               |               | Influenza - no activity |                |               |               | RSV (Antigen+PCR) |               |                |                |
|------------|----------------|----------------|---------------|---------------|-------------------------|----------------|---------------|---------------|-------------------|---------------|----------------|----------------|
| Week       | IL %<br>SCVPCR | WI %<br>SCVPCR | IL %<br>COVAG | WI %<br>COVAG | IL %<br>FLUPCR          | WI %<br>FLUPCR | IL %<br>FLUAG | WI %<br>FLUAG | IL %<br>RSVAG     | WI %<br>RSVAG | IL %<br>RSVPCR | WI %<br>RSVPCR |
| Sep 18     | 4.9            | 9.0            | 7.2           | 17.5          | 0                       | 0              | 0             | 0             | 33.0              | 31.0          | 28.0           | 39.6           |
| Sep 12     | 6.5            | 9.6            | 5.9           | 20.5          | 0                       | 0              | 0             | 0             | 20.0              | 21.9          | 41.6           | 43.7           |
| Sep 5      | 6.2            | 8.3            | 7.0           | 22.4          | 0                       | 0              | 0             | 0             | 33.3              | 43.9          | 38.1           | 40.5           |
| Aug 29     | 7.5            | 8.5            | 9.0           | 21.3          | 0                       | 0              | 0             | 0             | 38.9              | 32.5          | 43.9           | 38.8           |
| Aug 22     | 6.0            | 7.3            | 13.5          | 16.1          | 0                       | 0              | 0             | 0             | 31.3              | 27.1          | 32.5           | 20.6           |
| Aug 15     | 6.6            | 6.8            | 9.8           | 18.0          | 0                       | 0              | 0             | 0             | 22.9              | 23.5          | 27.0           | 16.7           |
| Aug 8      | 6.8            | 7.4            | 9.8           | 15.8          | 0                       | 0              | 0             | 0             | 16.6              | 22.7          | 25.7           | 16.9           |
| Aug 1      | 3.8            | 6.9            | 10.5          | 17.6          | 0                       | 0              | 0             | 0             | 14.9              | 20.0          | 0.0            | 0.0            |
| Jul 25     | 2.7            | 4.1            | 8.0           | 11.8          | 0                       | 0              | 0             | 0             | 15.5              | 16.7          | 0.0            | 0.0            |
| Jul 18     | 1.8            | 2.6            | 1.4           | 7.2           | 0                       | 0              | 0             | 0             | 15.6              | 21.6          | 0.0            | 0.0            |
| Jul 11     | 1.6            | 1.6            | 1.0           | 5.0           | 0                       | 0              | 0             | 0             | 16.7              | 17.4          | 0.0            | 0.0            |
| Jul 4      | 1.6            | 1.4            | 0.0           | 3.0           | 0                       | 0              | 0             | 0             | 15.5              | 15.5          | 0.0            | 0.0            |
| Jun 27     | 1.7            | 1.5            | 1.5           | 2.8           | 0                       | 0              | 0             | 0             | 11.1              | 8.3           | 0.0            | 0.0            |
| Jun 20     | 1.5            | 1.2            | 1.5           | 1.1           | 0                       | 0              | 0             | 0             | 7.1               | 3.2           | 0.0            | 0.0            |

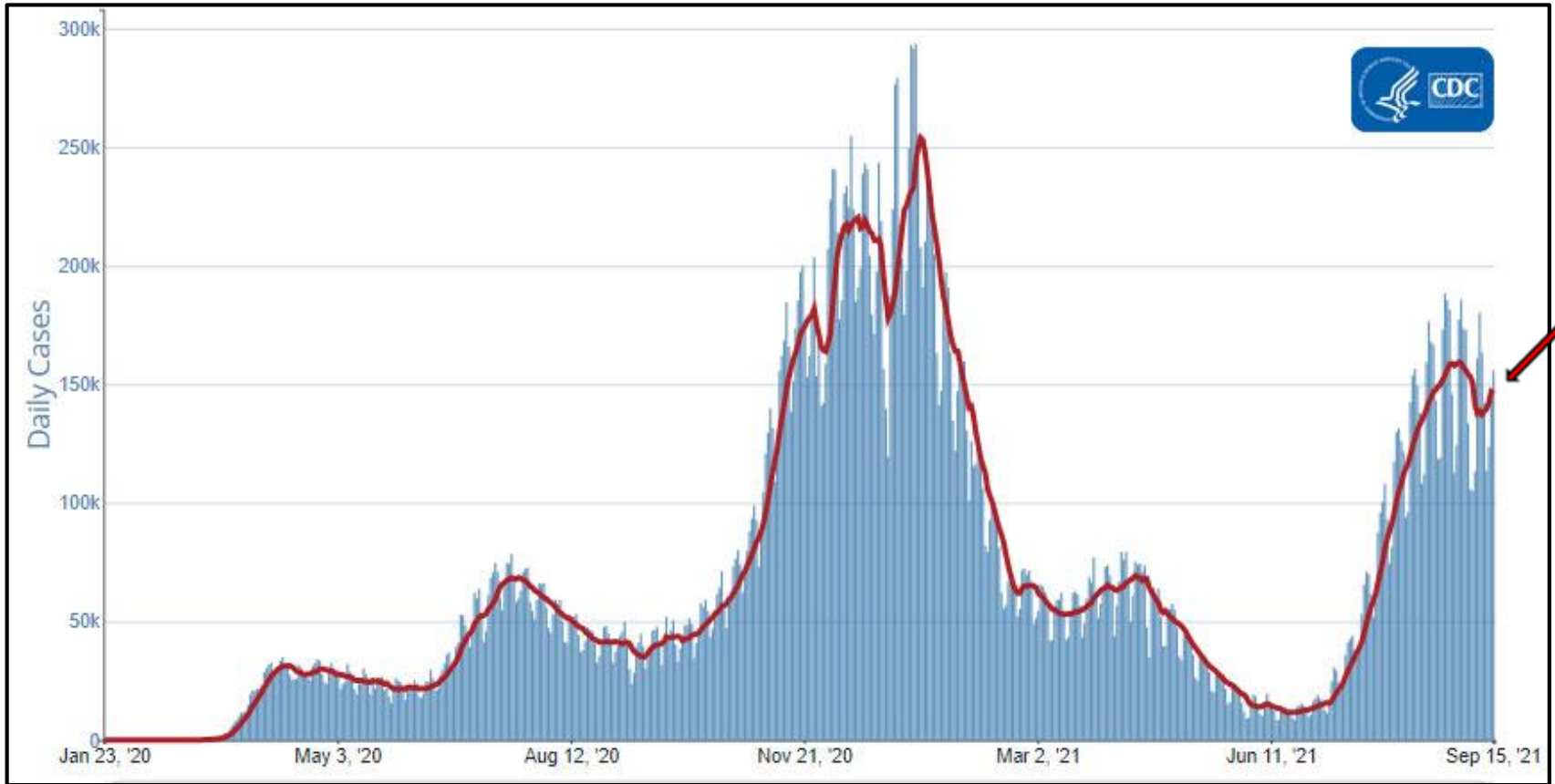
**ACL RSV tests results are consistent with “atypical” RSV outbreak**

## ACL COVAG and SCVPCR - Pos rate (%) - Sep 19, 2021

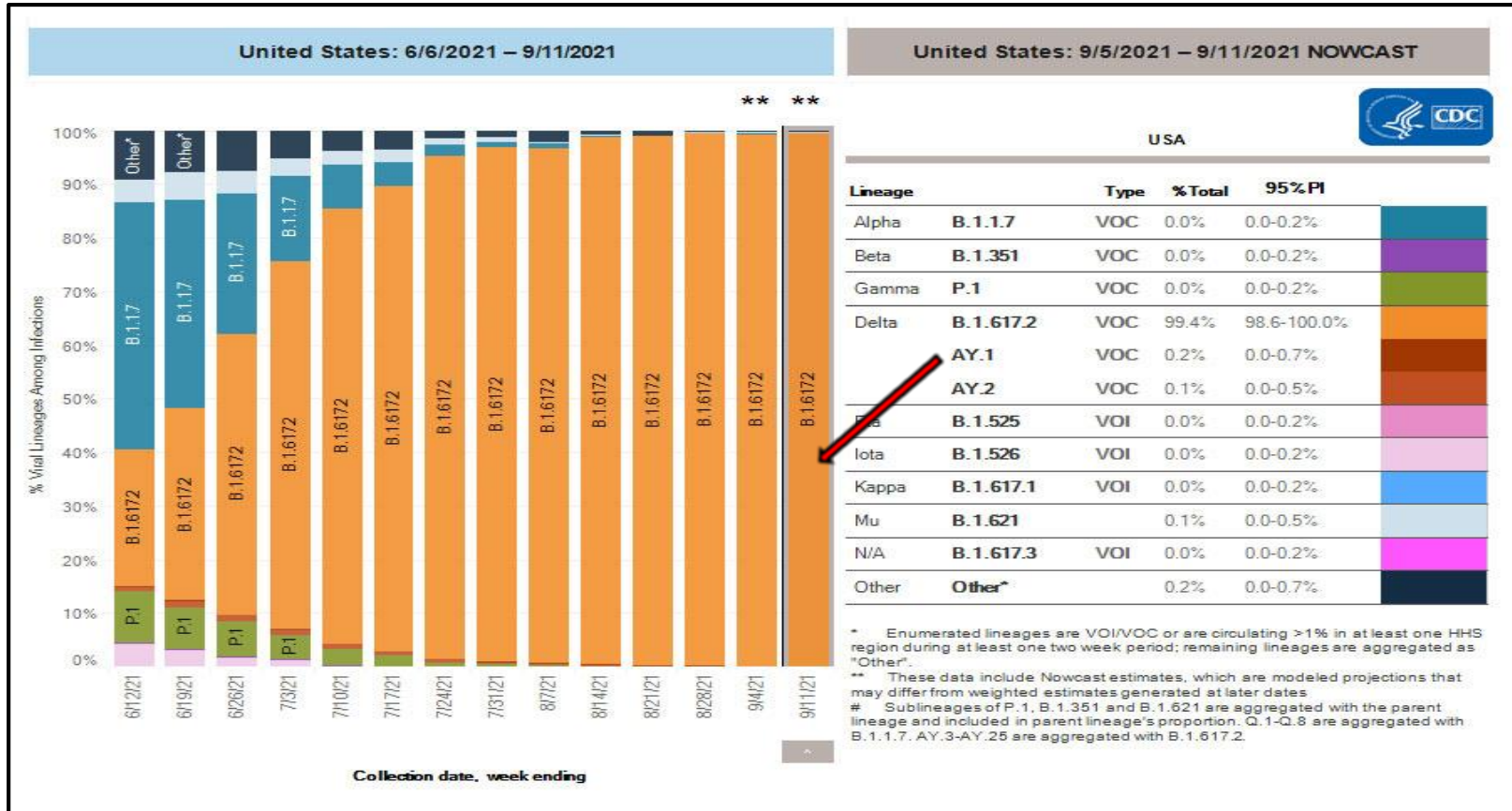
- IL % COVAG
- WI % COVAG
- IL % SCVPCR
- WI % SCVPCR



# Sep 15, 2021 - daily COVID-19 cases in US - CDC



# Sep 11, 2021 – SARS-CoV-2 circulating in the US (~99.7% % Delta variants)





## US vaccination status CDC | Data as of: Sep 16, 2021

383,038,403

Vaccines Administered

210,700,361

People who received at least one dose

180,086,143

People who are fully vaccinated\*

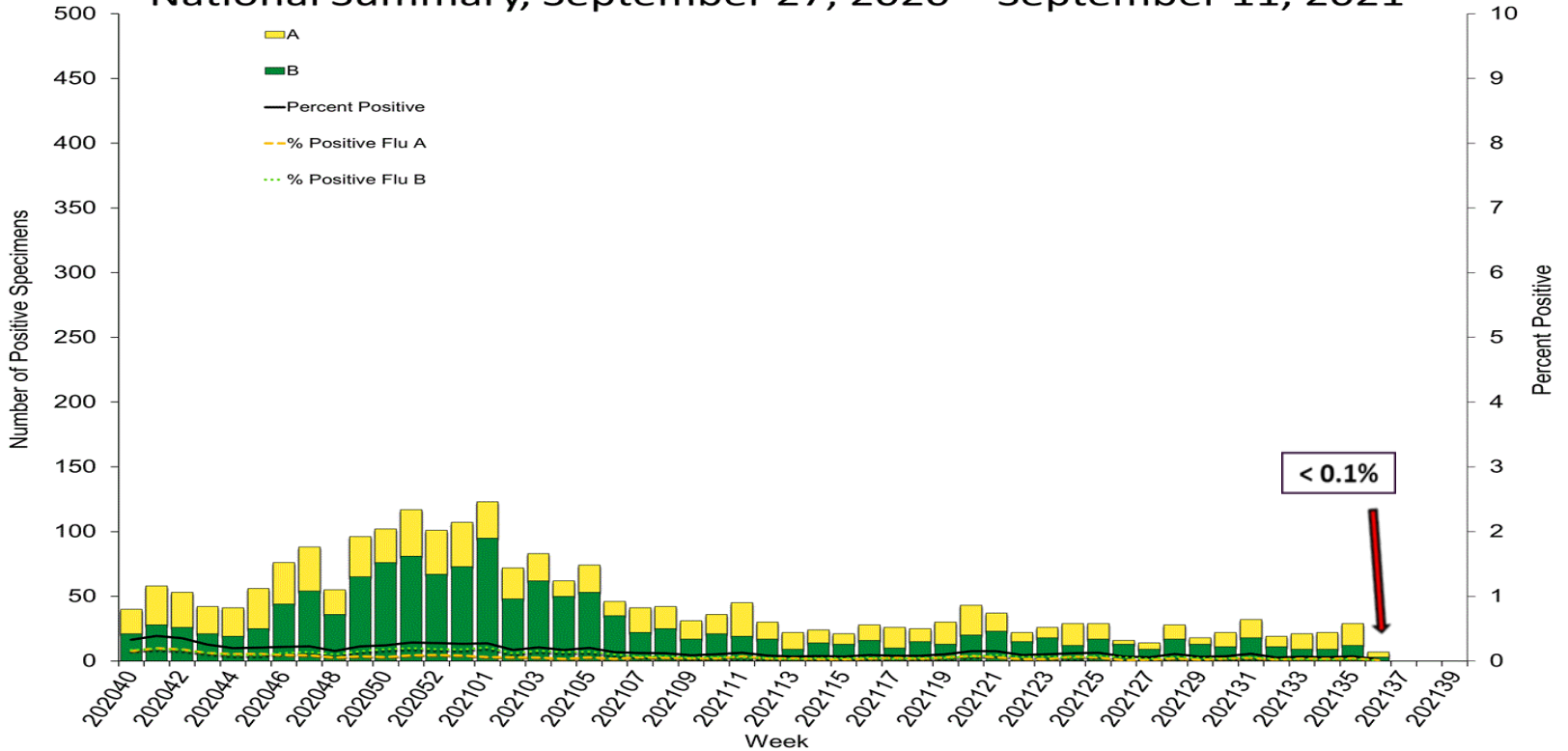
63.5%

Percentage of the US population that has received at least one dose

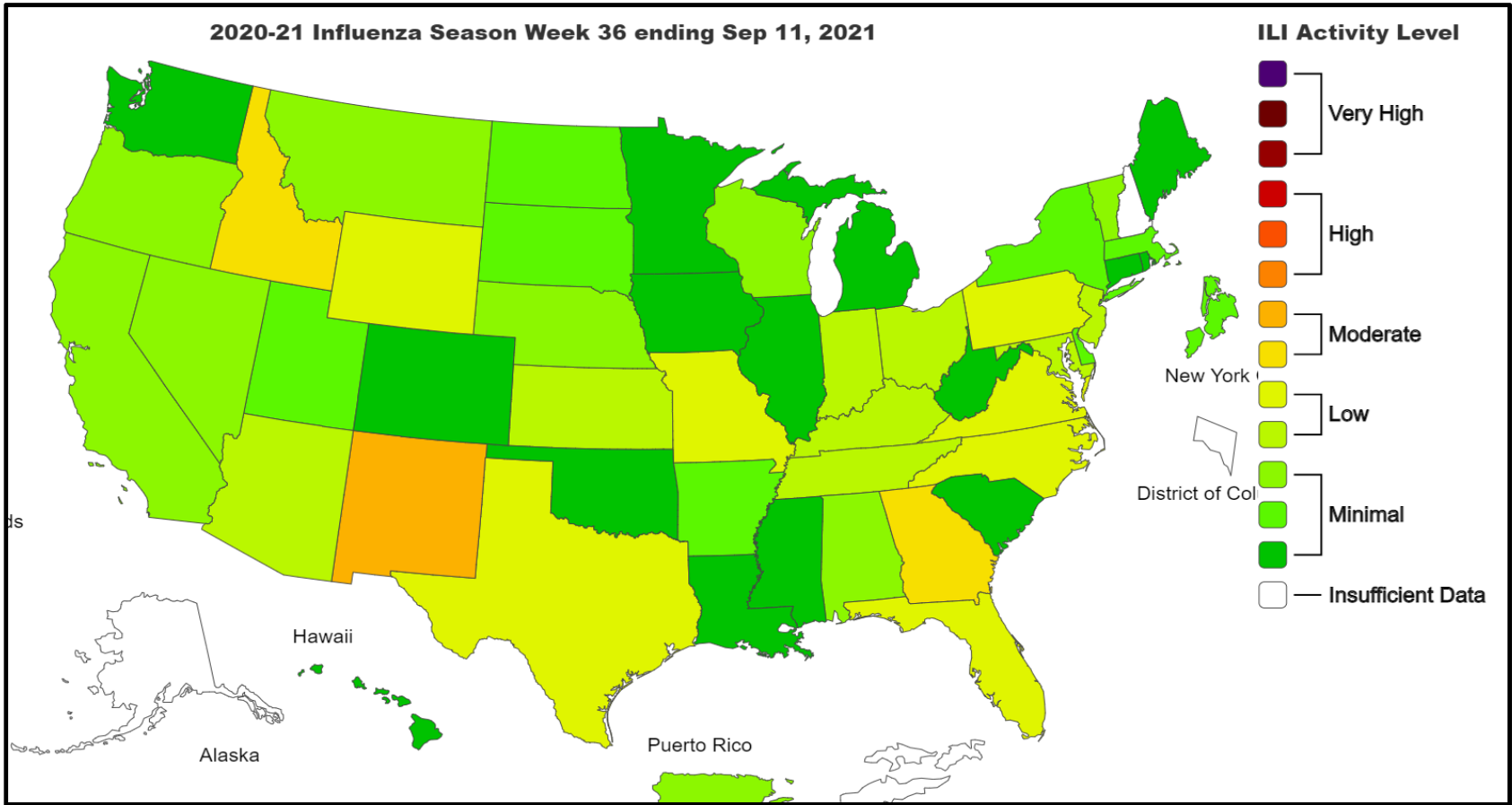
54.2%

Percentage of the US population that has been fully vaccinated\*

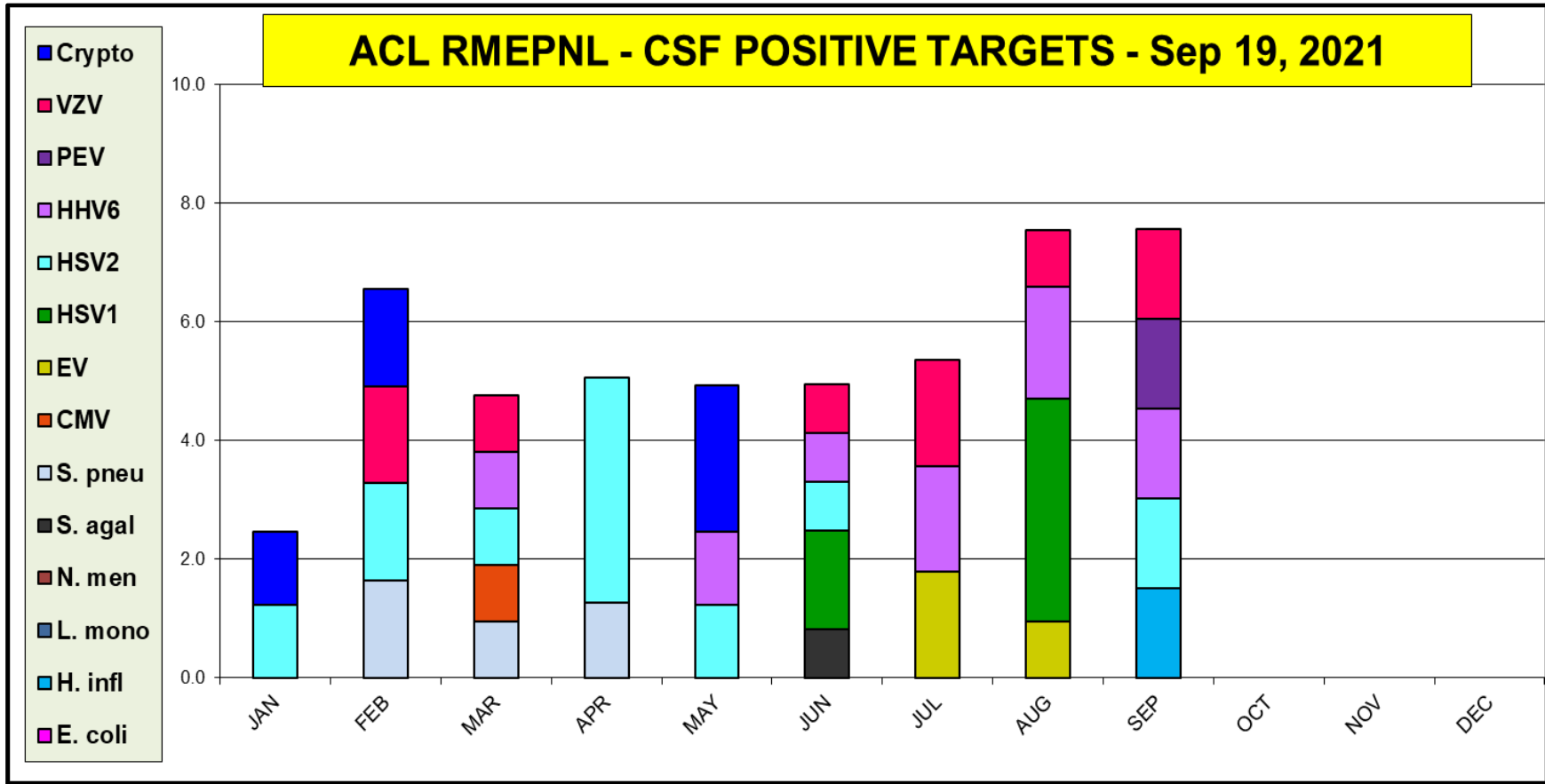
# Influenza Positive Tests Reported to CDC by U.S. Clinical Laboratories, National Summary, September 27, 2020 – September 11, 2021



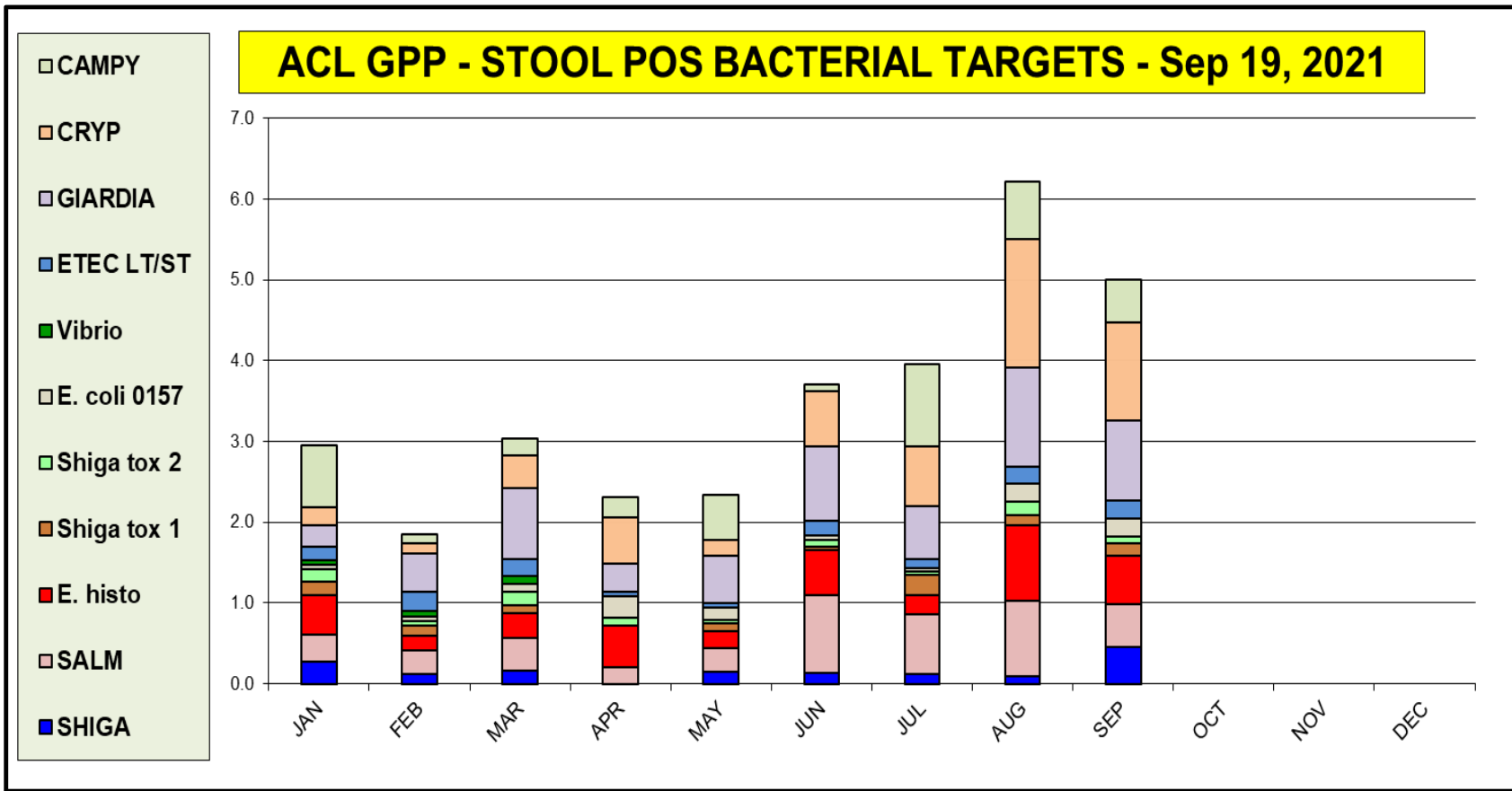
# 2020-21 Influenza Season Week 36 ending Sep 11, 2021



# CSF targets positivity rate is 7.6%



# The most prevalent GI bacterial target is (Cryptosporidium 1.2%)



# The most prevalent GI viral target is – (Norovirus II – 0.5%)

