

# ACL Laboratories Respiratory Virus Activity Report

Updated 4/29/2026



Now part of  ADVOCATEHEALTH



## Respiratory Pathogens Monthly % Positivity - May-25 thru Apr-26

MONTH - YEAR	Flu A % Positive	% Flu A H1N1 Subtype*	% Flu A 2009 H1N1 Subtype*	% Flu A H3N2 Subtype*	% Flu A No Subtype*	Flu B % Positive	RSV A/B % Positive	HPIV-1 % Positive	HPIV-2 % Positive	HPIV-3 % Positive	HPIV-4 % Positive	HCOV 229E % Positive	HCOV NL63 % Positive	HCOV OC43 % Positive	HCOV HKU1 % Positive	SARS-CoV-2 % Positive	HMPV % Positive	Rhinovirus / Enterovirus % Positive	Adenovirus % Positive	C. pneumoniae % Positive	M. pneumoniae % Positive	B. pertussis % Positive	B. paraptetussis % Positive	L. pneumophila # Positive
Apr-26	0.3%	0.0%	0.0%	80.0%	20.0%	4.5%	3.6%	0.1%	0.0%	1.6%	0.2%	1.1%	0.6%	1.3%	1.1%	1.1%	6.7%	17.2%	1.5%	0.1%	0.2%	0.1%	0.1%	0
Mar-26	1.6%	0.0%	28.0%	68.0%	4.0%	10.7%	7.4%	0.2%	0.0%	0.8%	0.2%	2.6%	1.3%	2.1%	3.2%	2.5%	8.6%	9.7%	1.8%	0.0%	0.2%	0.1%	0.0%	0
Feb-26	5.4%	0.0%	6.2%	93.8%	0.0%	5.6%	8.0%	0.5%	0.2%	0.2%	0.3%	3.2%	1.8%	2.0%	3.8%	6.1%	6.9%	6.9%	1.6%	0.1%	0.3%	0.1%	0.1%	0
Jan-26	13.1%	0.0%	7.0%	91.5%	1.4%	0.6%	4.6%	0.6%	0.2%	0.5%	0.1%	2.4%	0.5%	0.7%	0.9%	7.2%	4.4%	6.9%	1.6%	0.1%	0.5%	0.0%	0.0%	0
Dec-25	24.8%	0.0%	6.6%	91.8%	1.6%	0.3%	2.6%	1.3%	0.7%	0.1%	0.3%	0.8%	0.2%	0.4%	0.3%	4.8%	2.7%	11.0%	1.7%	0.1%	1.0%	0.0%	0.0%	0
Nov-25	3.5%	0.0%	22.4%	75.5%	2.0%	0.1%	1.0%	2.0%	2.3%	0.2%	0.4%	0.2%	0.0%	0.1%	0.2%	2.6%	1.2%	18.5%	1.4%	0.2%	2.0%	0.1%	0.0%	0
Oct-25	0.6%	0.0%	40.0%	30.0%	0.0%	0.0%	0.4%	2.7%	2.9%	0.3%	0.3%	0.2%	0.0%	0.0%	0.0%	2.6%	0.7%	23.0%	1.1%	0.2%	1.7%	0.1%	0.0%	0
Sep-25	0.3%	0.0%	62.5%	37.5%	0.0%	0.0%	0.1%	1.1%	1.6%	0.4%	0.1%	0.2%	0.1%	0.2%	0.1%	6.6%	0.4%	29.1%	0.9%	0.1%	1.3%	0.2%	0.1%	1
Aug-25	0.3%	0.0%	100.0%	0.0%	0.0%	0.0%	0.1%	1.0%	1.0%	0.7%	0.2%	0.1%	0.0%	0.0%	0.0%	6.7%	0.6%	18.3%	1.3%	0.1%	1.4%	0.1%	0.0%	0
Jul-25	0.2%	0.0%	100.0%	0.0%	0.0%	0.0%	0.1%	0.8%	1.0%	3.6%	0.0%	0.1%	0.0%	0.0%	0.0%	3.6%	1.8%	10.1%	1.4%	0.0%	0.9%	0.2%	0.0%	0
Jun-25	0.2%	0.0%	50.0%	0.0%	50.0%	0.2%	0.2%	0.9%	0.5%	7.4%	0.0%	0.0%	0.0%	0.1%	0.1%	1.9%	2.9%	16.3%	1.6%	0.0%	0.5%	0.1%	0.0%	1
May-25	0.3%	0.0%	100.0%	0.0%	0.0%	1.6%	0.4%	1.0%	0.2%	9.2%	0.1%	0.4%	0.1%	0.5%	0.3%	2.1%	6.2%	18.6%	1.6%	0.1%	0.4%	0.0%	0.0%	0

\* Represents the % of Influenza A positive samples that are positive for each subtype; subtyping is not performed on all Influenza A specimens (only those specimens tested with the Rapid Respiratory Pathogen Panel)  
 Flu A = Influenza Type A, Flu B = Influenza Type B, RSV A/B = Respiratory Syncytial Virus Type A/B (not differentiated), HPIV = Human Parainfluenza Virus, HCOV = Human Coronavirus, HMPV = Human Metapneumovirus



## Weekly Influenza PCR % Positivity by State -

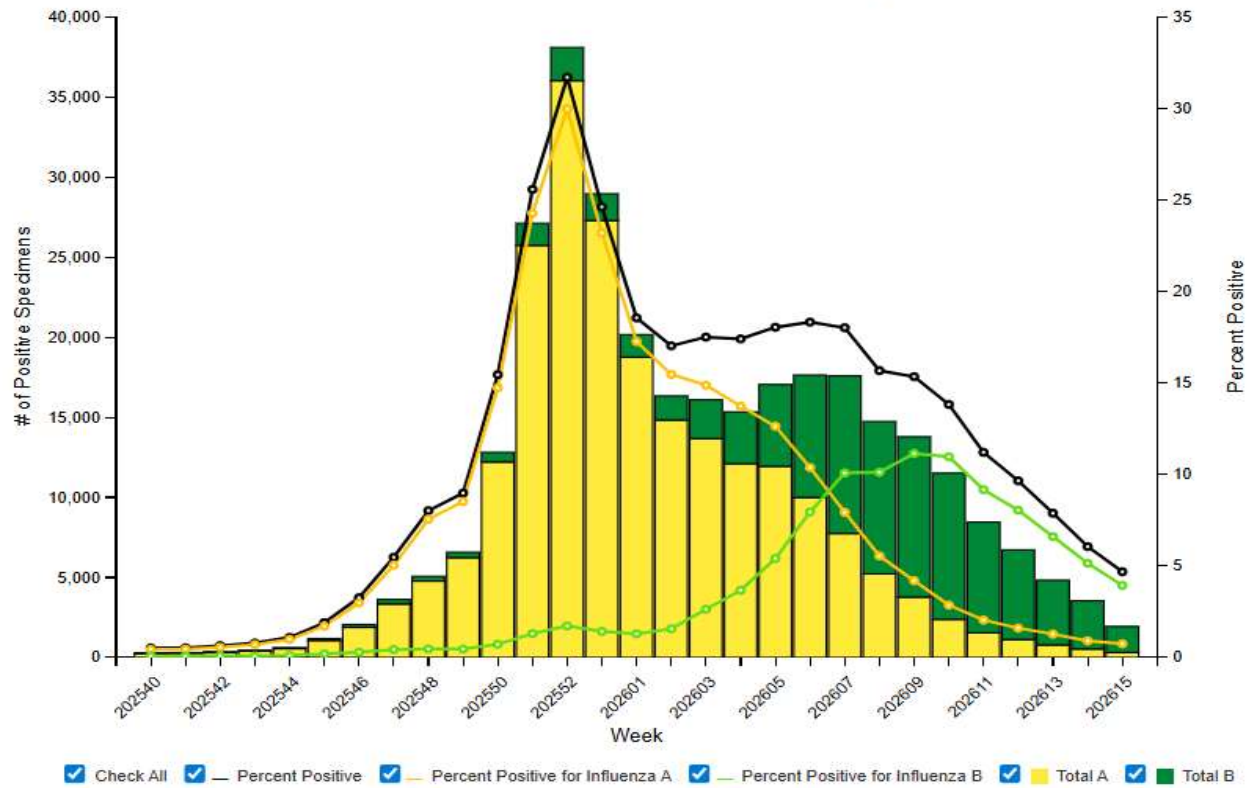
2/7/26 thru 4/25/26





## National Influenza Positivity Rates (Data from CDC)

Influenza Positive Tests Reported to CDC by Clinical Laboratories, National Summary, 2025-26 Season, week ending Apr 18, 2026

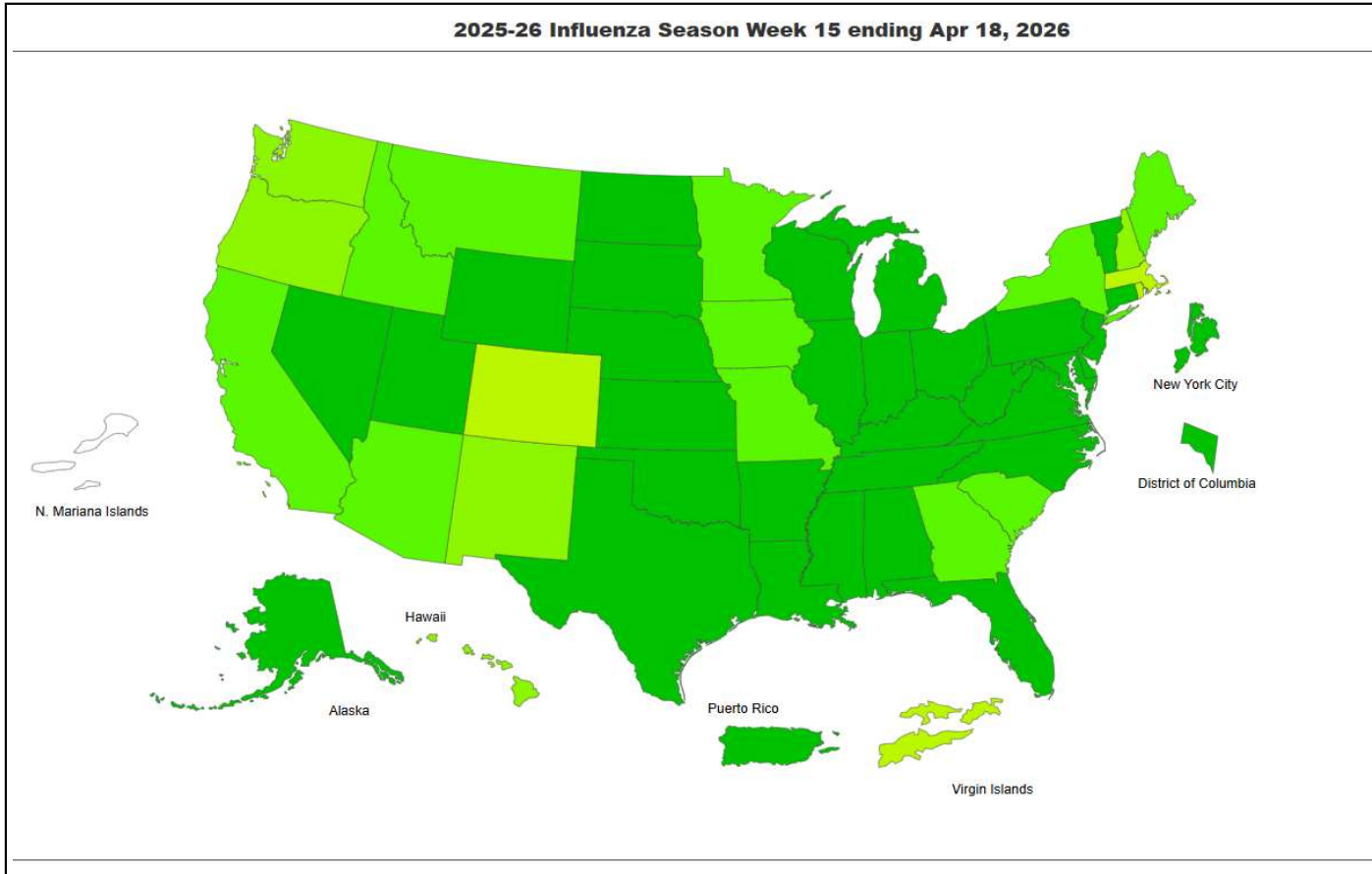
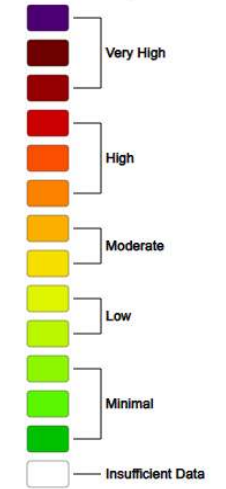




## National Influenza Positivity Rates (Data from CDC)

2025-26 Influenza Season Week 15 ending Apr 18, 2026

ILI Activity Level

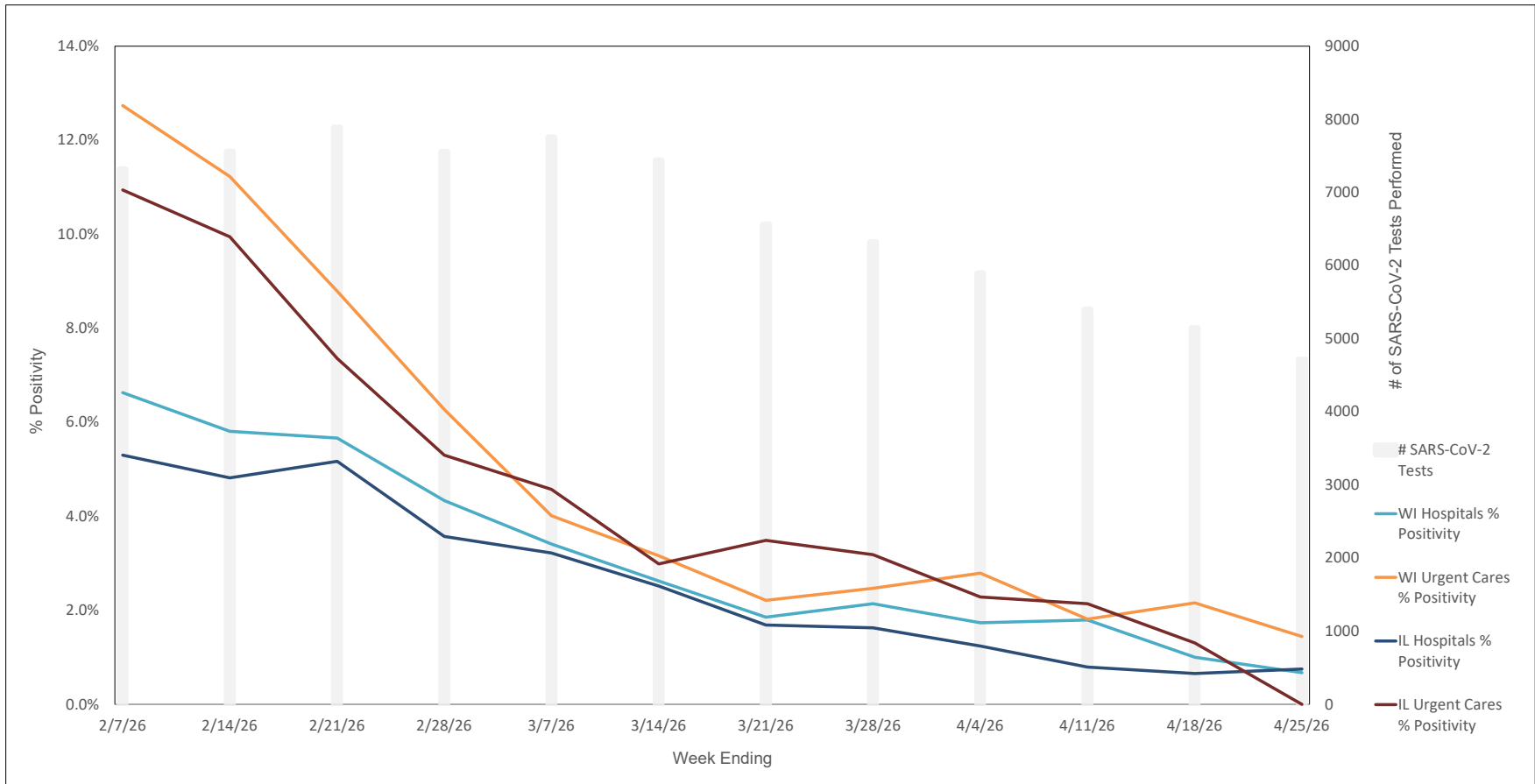




Now part of ADVOCATEHEALTH

# Weekly SARS-CoV-2 PCR % Positivity Rate -

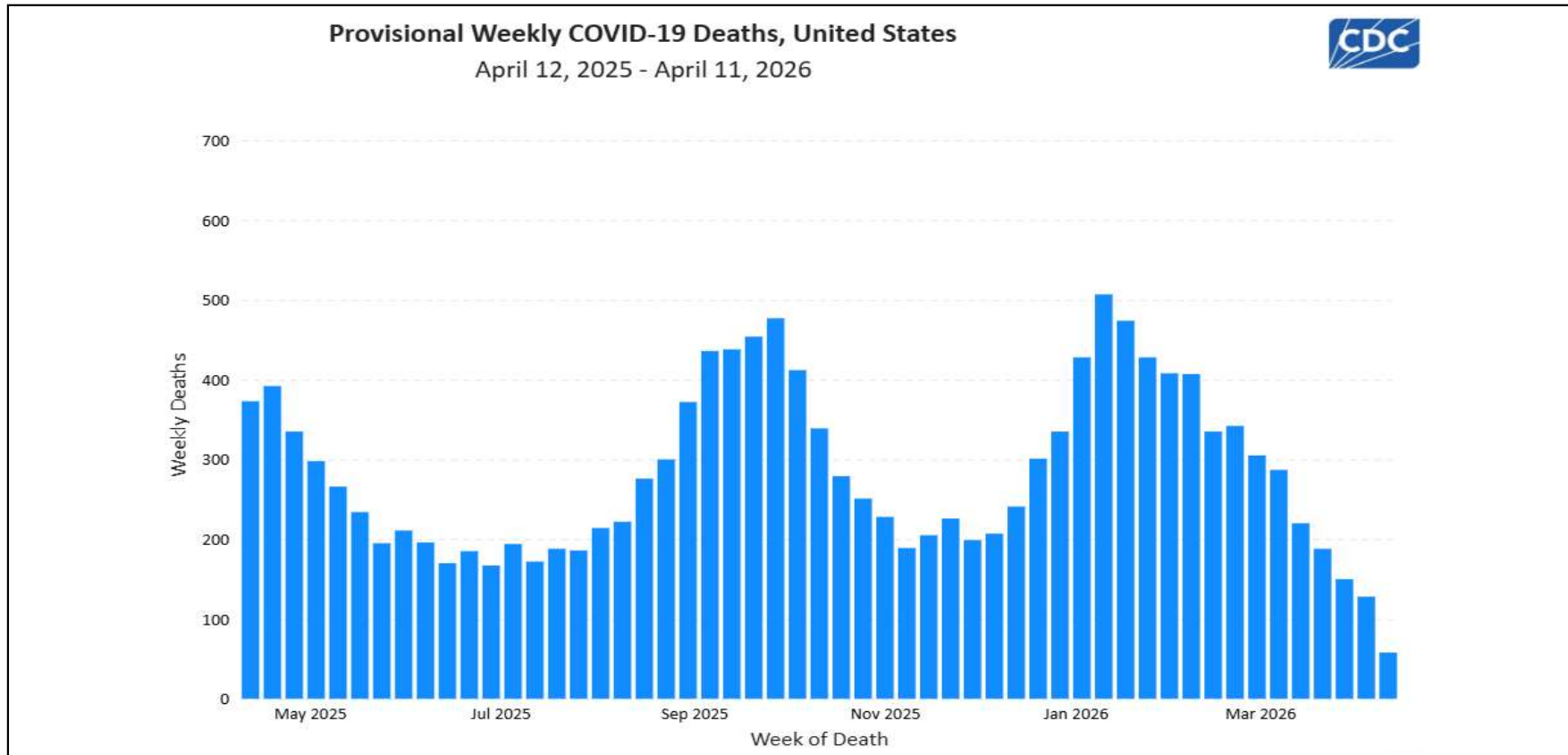
2/7/26 thru 4/25/26





## % of Weekly Deaths in US Attributed to COVID-19 by Week

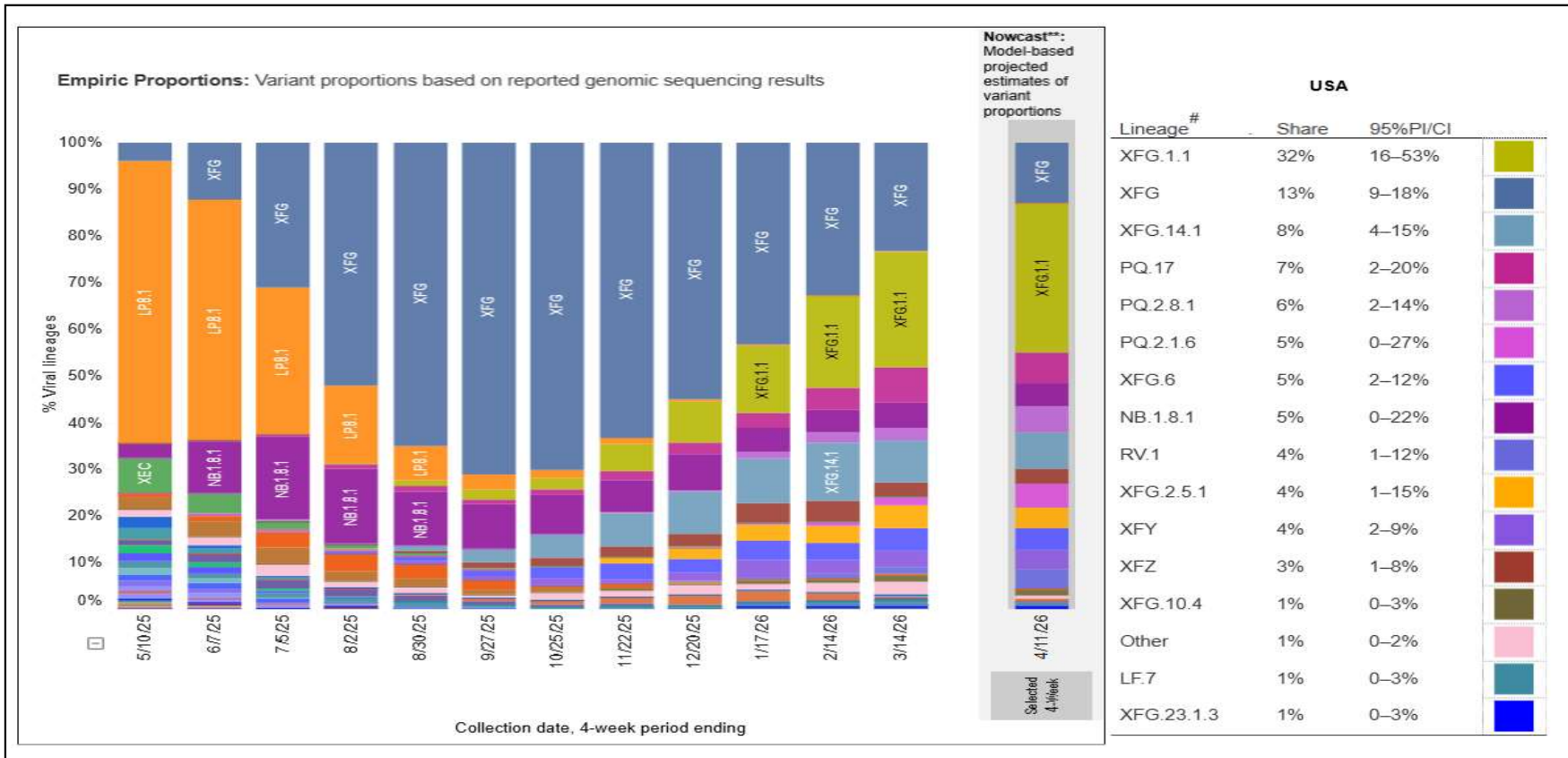
Last Updated 4/4/2026



<https://www.cdc.gov/covid/php/surveillance/index.html>



## Most Prevalent SARS-CoV-2 Strains Circulating in the US thru 4/25/26 Data from CDC's Nowcast\*\* Modelling (last updated 4/11/26)

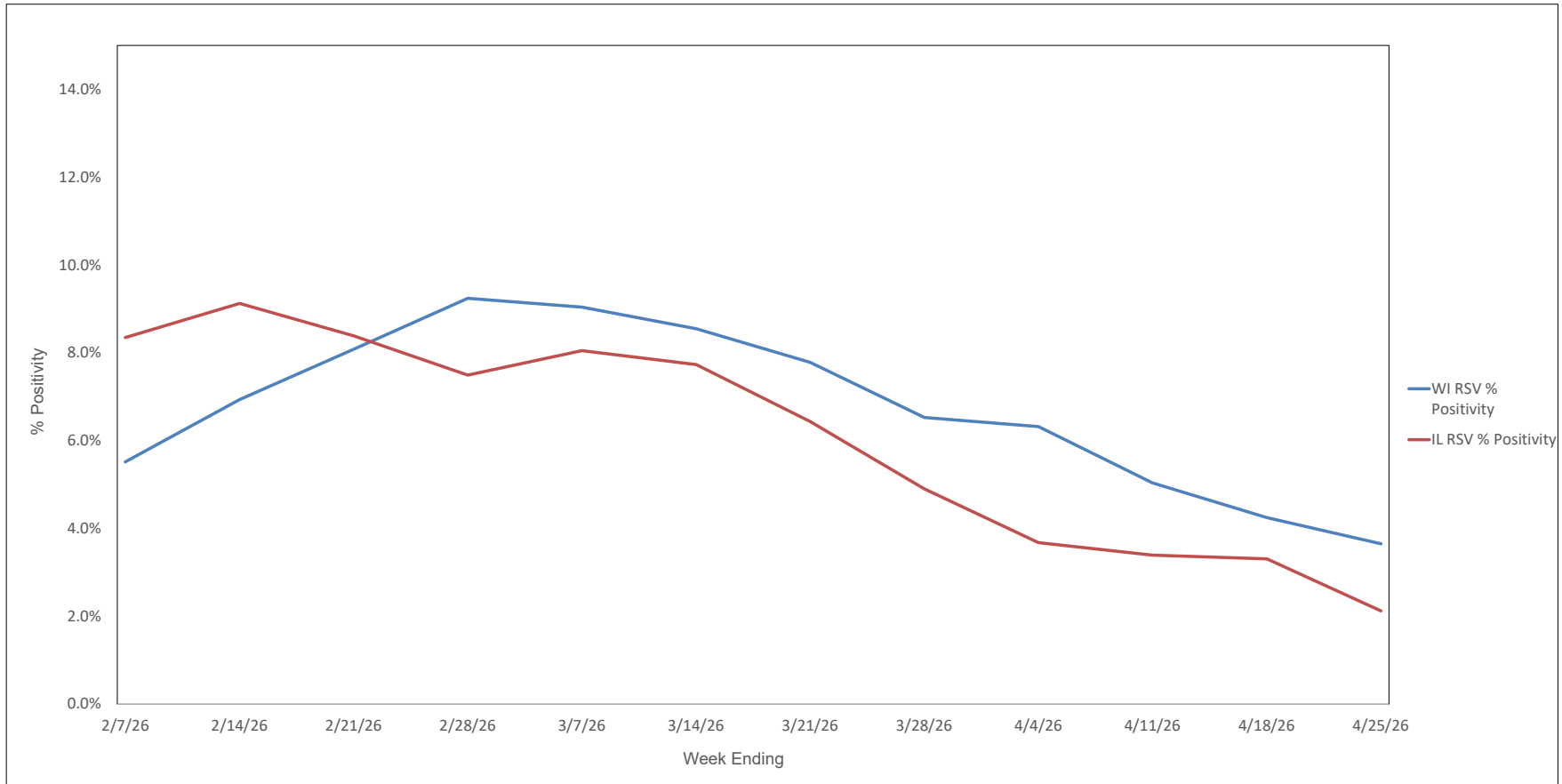


\*\*CDC uses Nowcast model that estimates more recent proportions of circulating variants (actual sequencing data is typically delayed for 2 weeks).



Now part of ADVOCATEHEALTH

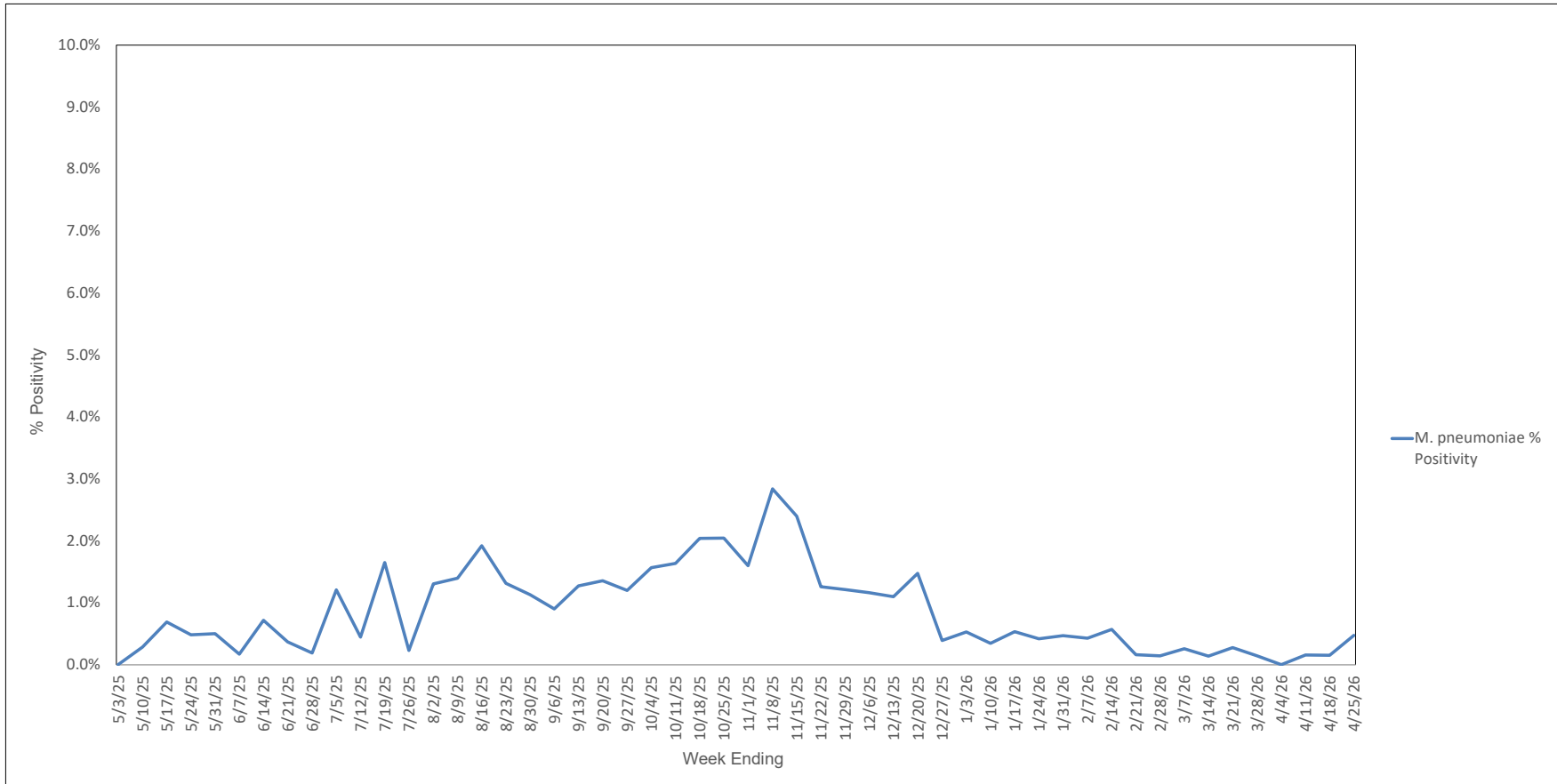
## Weekly RSV PCR % Positivity by State - 2/7/26 thru 4/25/26





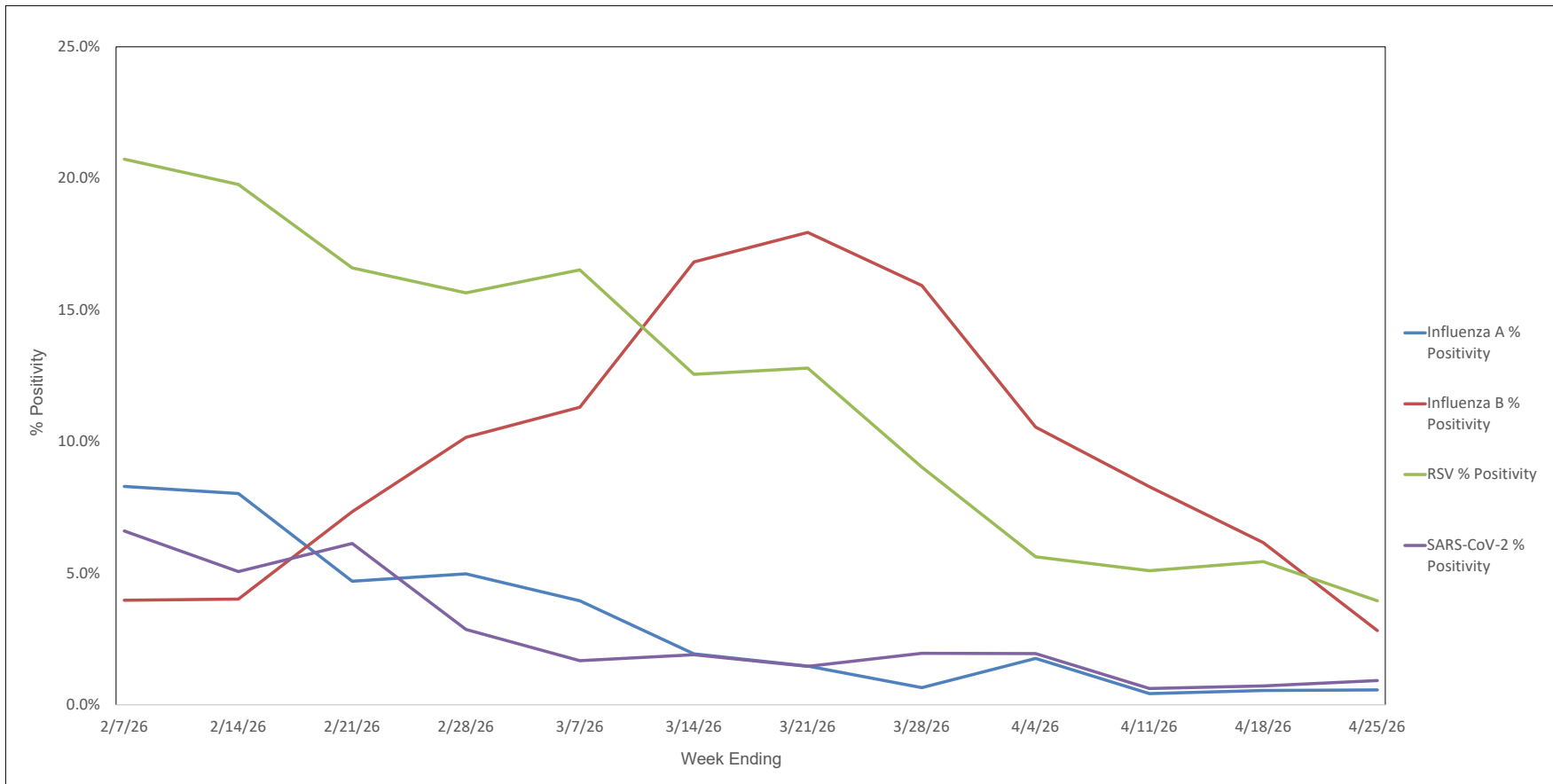
Now part of ADVOCATEHEALTH

## ACL Laboratories *Mycoplasma pneumoniae* Weekly Positivity Rates 5/3/25 thru 4/25/26





## Advocate Children's Hospital Influenza A, Influenza B, RSV, and SARS-CoV-2 PCR Positivity Rates - 2/7/26 thru 4/25/26





## AAH WI Hospitals (patients < 18 yrs old) Influenza A, Influenza B, RSV, and SARS-CoV-2 PCR Positivity Rates - 2/7/26 thru 4/25/26

