

# ACL Laboratories Respiratory Virus Activity Report

Updated: June 27, 2023

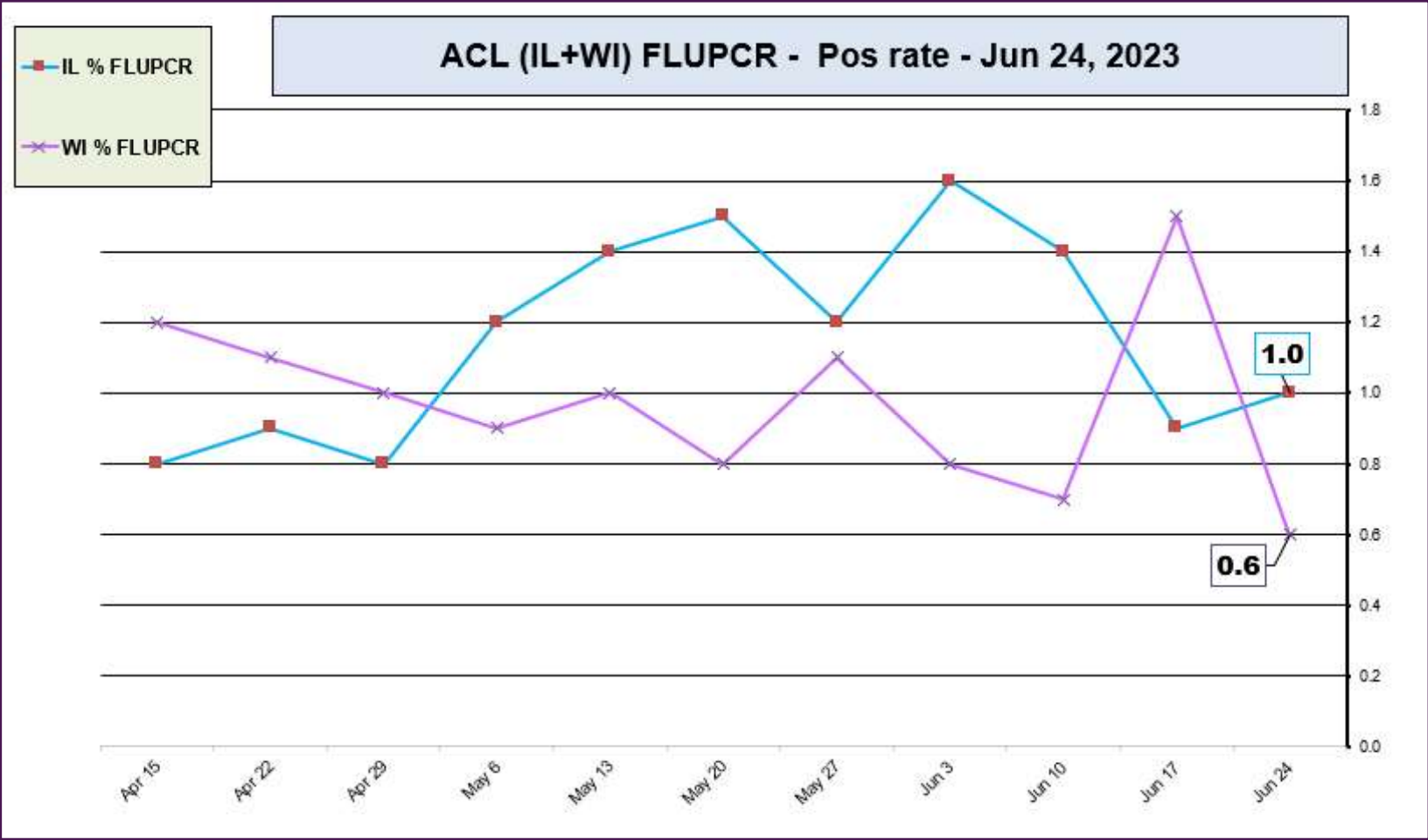


## RESPIRATORY PATHOGEN PANEL JULY 2023 - JUNE 27, 2023 Positivity Rate (%)

| MONTH    | FLU A UnSub | FLU A (H1N1) | 2009 H1N1 | FLU A H3N2 | FLU B | RSV A/B | PARA 1 | PARA 2 | PARA 3 | PARA 4 | COR 229E | COR NL63 | COR OC43 | COR HKU1 | META | ENTERO/RHINO | Adeno | BOCA | Legio-nella | Chla-mydia | Mycoplasm |
|----------|-------------|--------------|-----------|------------|-------|---------|--------|--------|--------|--------|----------|----------|----------|----------|------|--------------|-------|------|-------------|------------|-----------|
| JUN 2023 | 0.0         | 0.0          | 0.2       | 0.0        | 0.1   | 0.3     | 0.9    | 1.6    | 5.3    | 0.0    | 0.1      | 0.1      | 0.2      | 0.0      | 0.5  | 11.6         | 3.8   | 0.3  | 0.3         | 0.0        | 0.0       |
| MAY 2023 | 0.0         | 0.1          | 0.2       | 0.0        | 0.1   | 0.2     | 0.5    | 1.1    | 6.8    | 0.1    | 0.1      | 0.9      | 0.1      | 0.1      | 3.2  | 17.1         | 3.2   | 0.5  | 0.0         | 0.0        | 0.0       |
| APR 2023 | 0.0         | 0.0          | 0.2       | 0.1        | 0.1   | 0.1     | 0.4    | 0.5    | 5.4    | 0.1    | 0.3      | 0.9      | 0.2      | 0.5      | 11.1 | 12.1         | 3.1   | 1.0  | 0.1         | 0.0        | 0.0       |
| MAR 2023 | 0.1         | 0.0          | 0.1       | 0.0        | 0.1   | 0.2     | 0.4    | 0.1    | 2.7    | 0.0    | 0.3      | 1.9      | 0.8      | 0.8      | 13.3 | 13.1         | 3.2   | 1.4  | 0.0         | 0.0        | 0.0       |
| FEB 2023 | 0.0         | 0.0          | 0.2       | 0.1        | 0.0   | 0.5     | 0.0    | 0.4    | 1.2    | 0.2    | 0.0      | 3.7      | 1.5      | 1.6      | 9.3  | 13.2         | 3.7   | 1.6  | 0.0         | 0.0        | 0.0       |
| JAN 2023 | 0.2         | 0.0          | 0.5       | 0.5        | 0.1   | 1.2     | 0.7    | 0.1    | 0.8    | 0.3    | 0.2      | 1.2      | 2.0      | 1.4      | 5.9  | 12.1         | 3.3   | 2.9  | 0.0         | 0.0        | 0.0       |
| DEC 2022 | 0.3         | 0.1          | 1.0       | 7.0        | 0.1   | 3.6     | 1.1    | 0.2    | 0.5    | 1.5    | 0.3      | 0.6      | 1.7      | 1.3      | 2.1  | 11.7         | 2.9   | 4.0  | 0.1         | 0.1        | 0.1       |
| NOV 2022 | 0.3         | 0.0          | 0.5       | 5.6        | 0.0   | 8.1     | 1.6    | 0.5    | 0.8    | 1.4    | 0.1      | 0.1      | 0.5      | 0.0      | 0.8  | 13.0         | 2.6   | 3.3  | 0.0         | 0.0        | 0.0       |
| OCT 2022 | 0.1         | 0.0          | 0.2       | 0.8        | 0.0   | 10.0    | 2.1    | 0.4    | 0.5    | 3.5    | 0.0      | 0.1      | 0.1      | 0.1      | 0.7  | 18.2         | 2.4   | 2.6  | 0.0         | 0.0        | 0.0       |
| SEP 2022 | 0.0         | 0.0          | 0.0       | 0.0        | 0.0   | 4.1     | 0.9    | 0.0    | 0.4    | 2.3    | 0.1      | 0.1      | 0.1      | 0.0      | 0.3  | 22.8         | 0.9   | 0.9  | 0.1         | 0.0        | 0.0       |
| AUG 2022 | 0.0         | 0.0          | 0.0       | 0.1        | 0.0   | 1.6     | 0.7    | 0.0    | 0.8    | 1.1    | 0.2      | 0.0      | 0.0      | 0.0      | 0.5  | 15.2         | 2.0   | 2.1  | 0.2         | 0.0        | 0.0       |
| JUL 2022 | 0.0         | 0.0          | 0.0       | 0.1        | 0.0   | 1.7     | 0.2    | 0.1    | 3.3    | 0.7    | 0.0      | 0.1      | 0.3      | 0.2      | 1.6  | 9.7          | 2.1   | 0.7  | 0.0         | 0.0        | 0.0       |

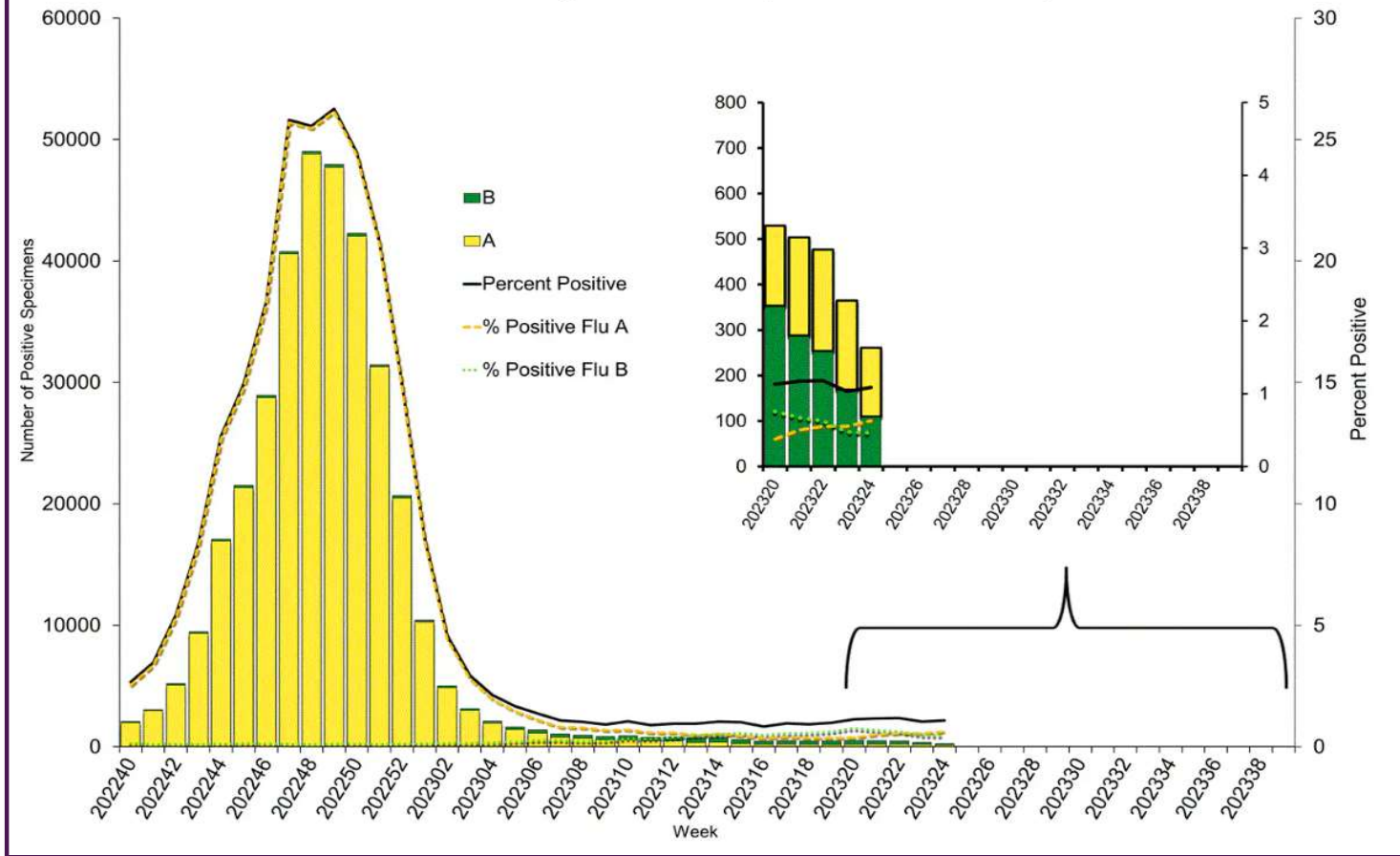
Data generated using: RPPNL (LAB9955)

# ACL INFLUENZA positivity rate (Apr 15, 2023 – Jun 24, 2023)



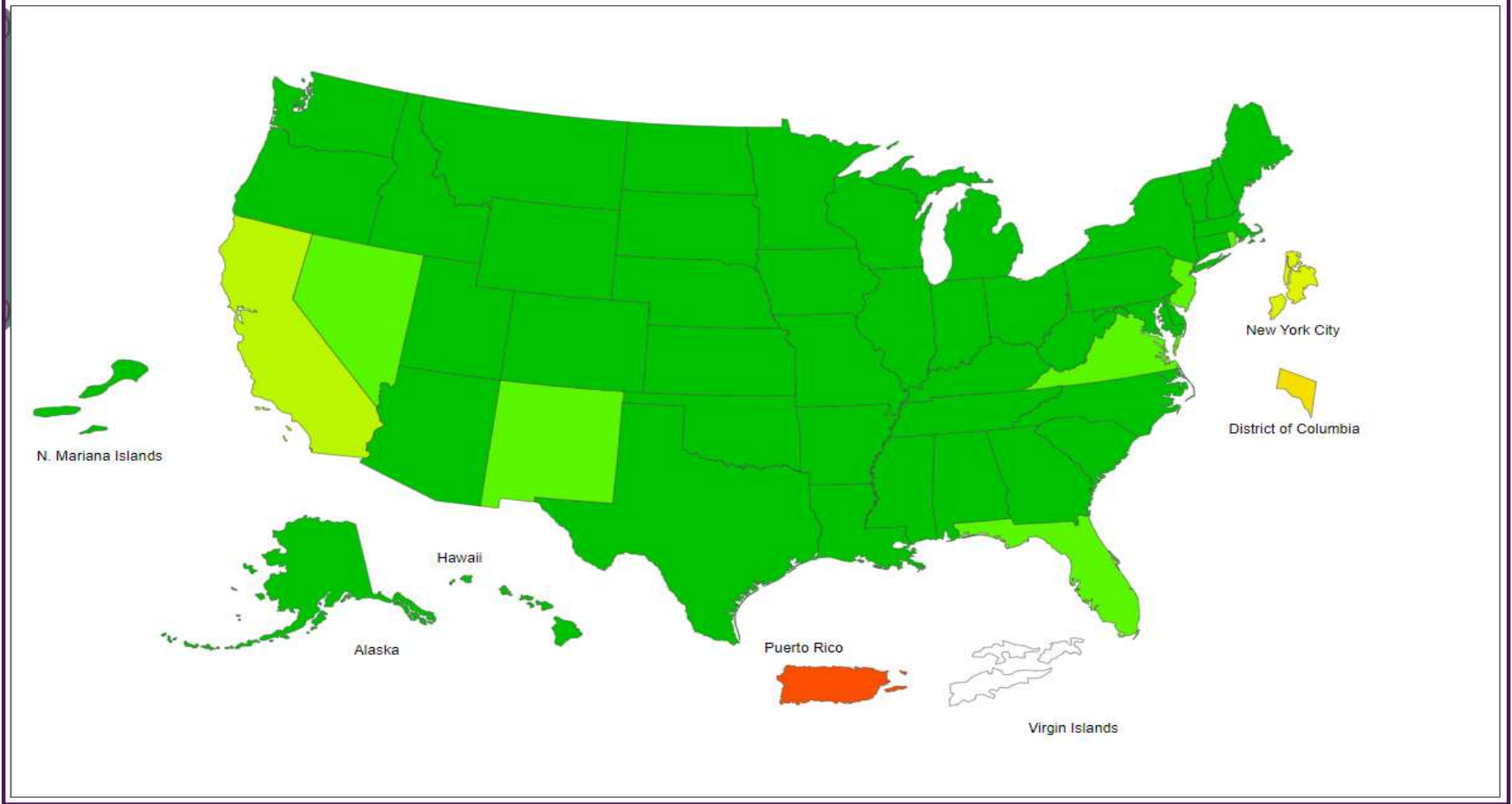
Data generated using: Respiratory Pathogen Panel (LAB9955), Influenza PCR, COVID/FLU/RSV Panel (LAB10789), COVID/Flu by PCR (LAB10889), and SARS-CoV-2/Influenza by PCR (LAB11071)

## Influenza Positive Tests Reported to CDC by U.S. Clinical Laboratories, National Summary, October 2, 2022 – June 17, 2023



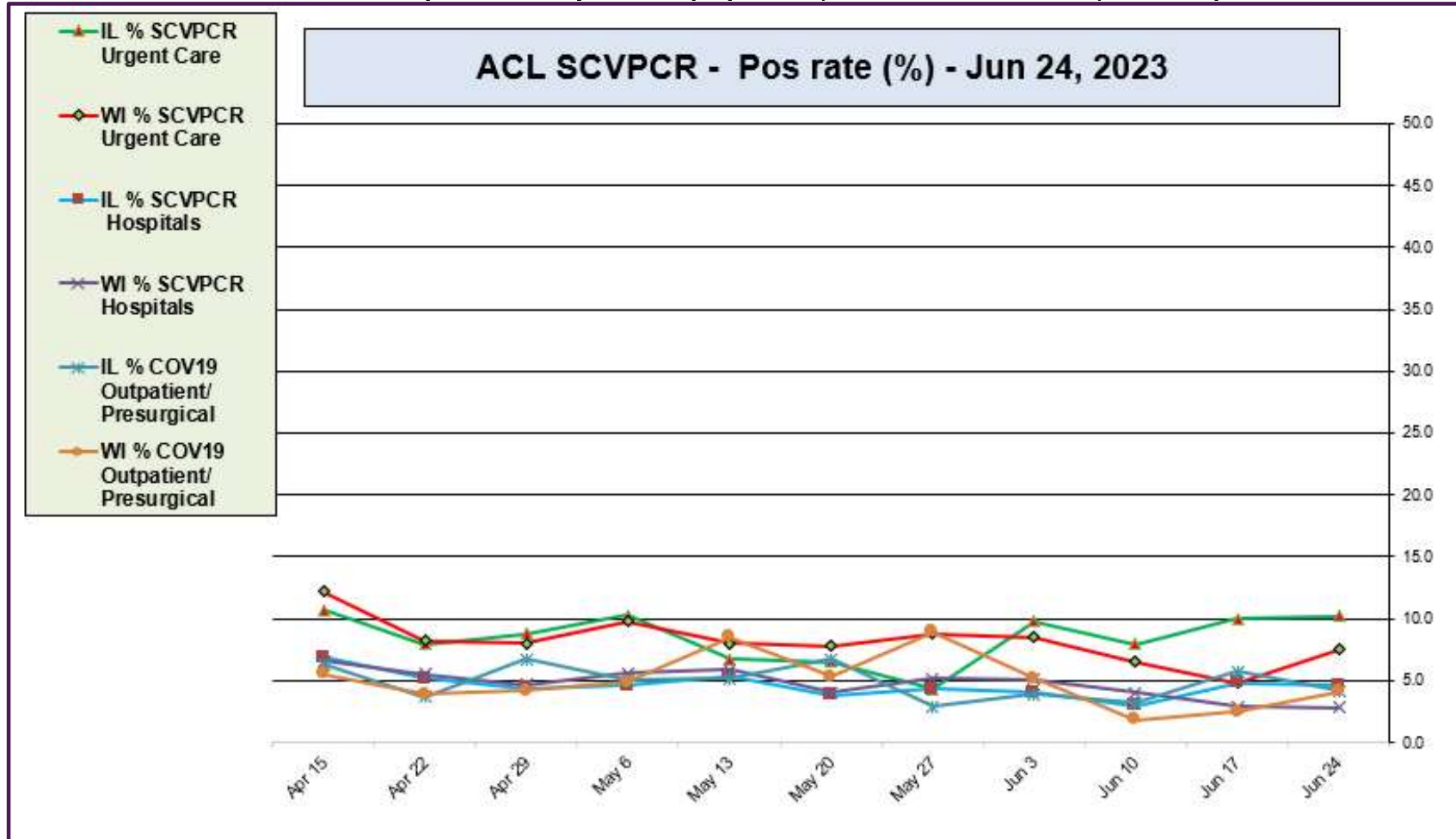
<https://www.cdc.gov/>

2022-23 Influenza Season Week 24 ending Jun 17, 2023



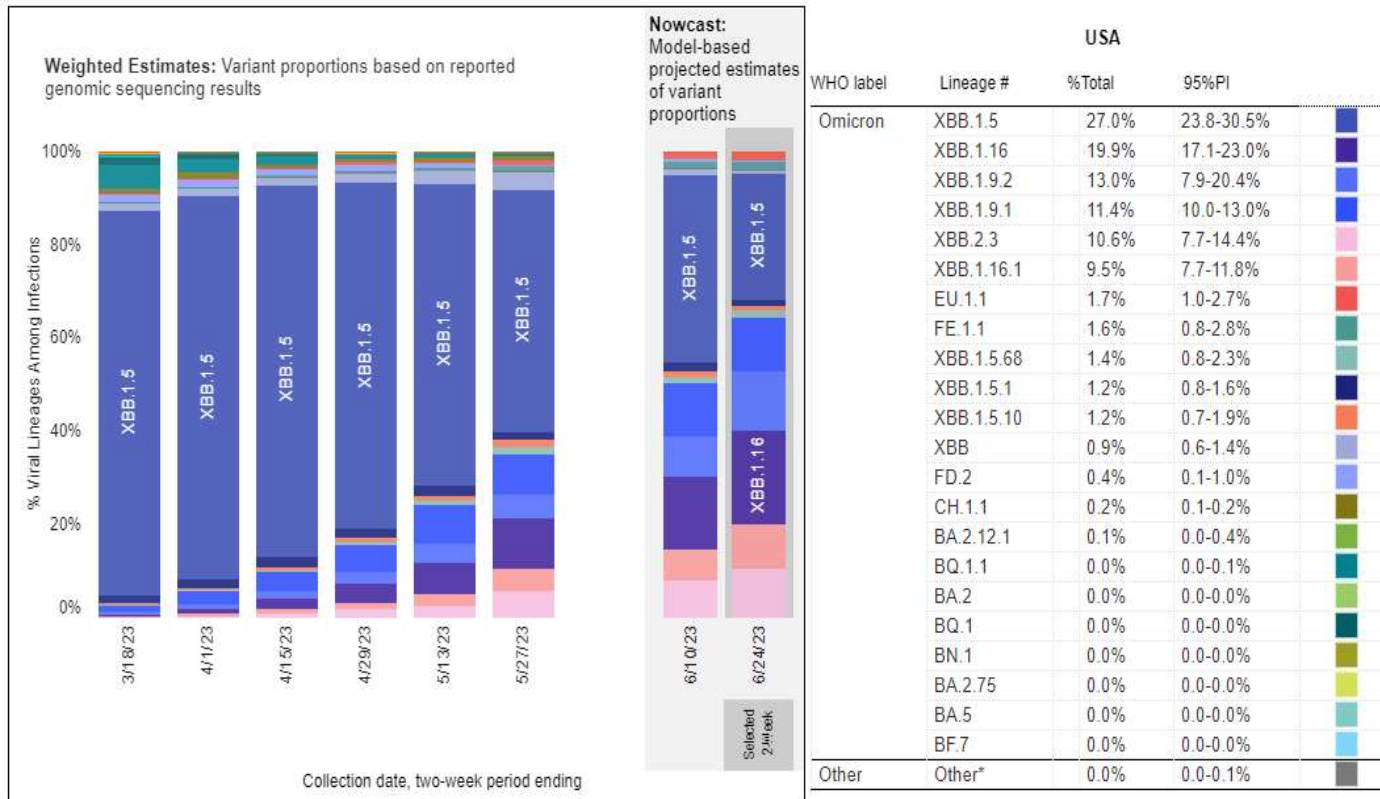
<https://www.cdc.gov/>

## ACL SARS-CoV-2 positivity rate (Apr 15, 2023 – Jun 24, 2023)



Data generated using: RAPID SARS-COV-2 BY PCR (LAB10644), COVID/FLU/RSV Panel (LAB10789), prior to 9/17 COVID-19 ANTIGEN TEST (SOFIA) (LAB10715), post 9/17 LAB10644 performed at WI and IL urgent cares sites

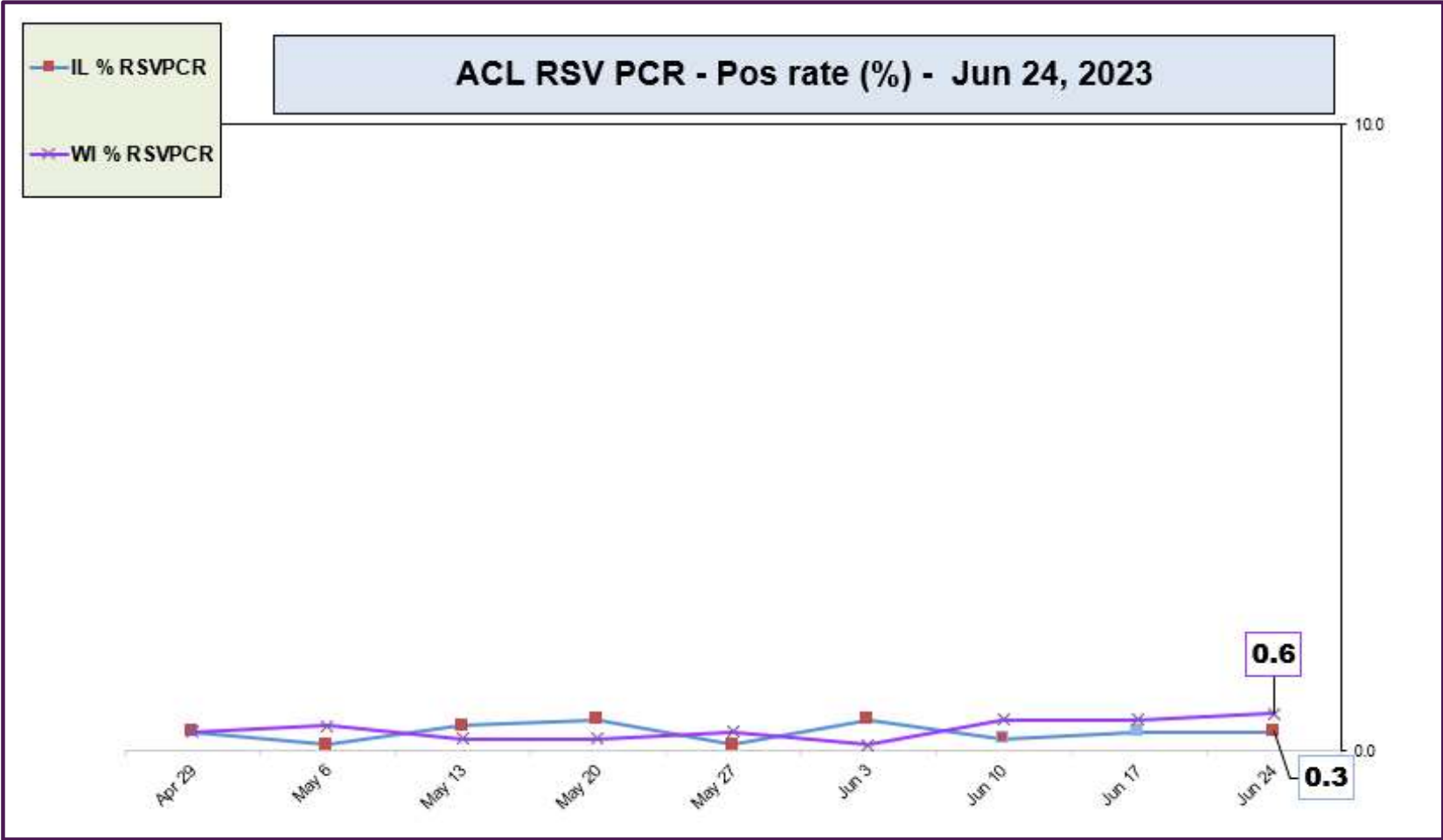
**June 24, 2023 – SARS-CoV-2 circulating in the Midwest based on projection by Nowcast modeling**  
**(Omicron XBB.1.5 – 27.0% ↓, XBB1.16 – 19.9% ↑, XBB.1.9.1 – 11.4% ↓, XBB.1.9.2 – 13.0% ↑, XBB.2.3 10.6% ↑)**



\*\* CDC uses **Nowcast** model that estimates more recent proportions of circulating variants (actual sequencing data is typically delayed for 2 weeks).

<https://www.cdc.gov/>

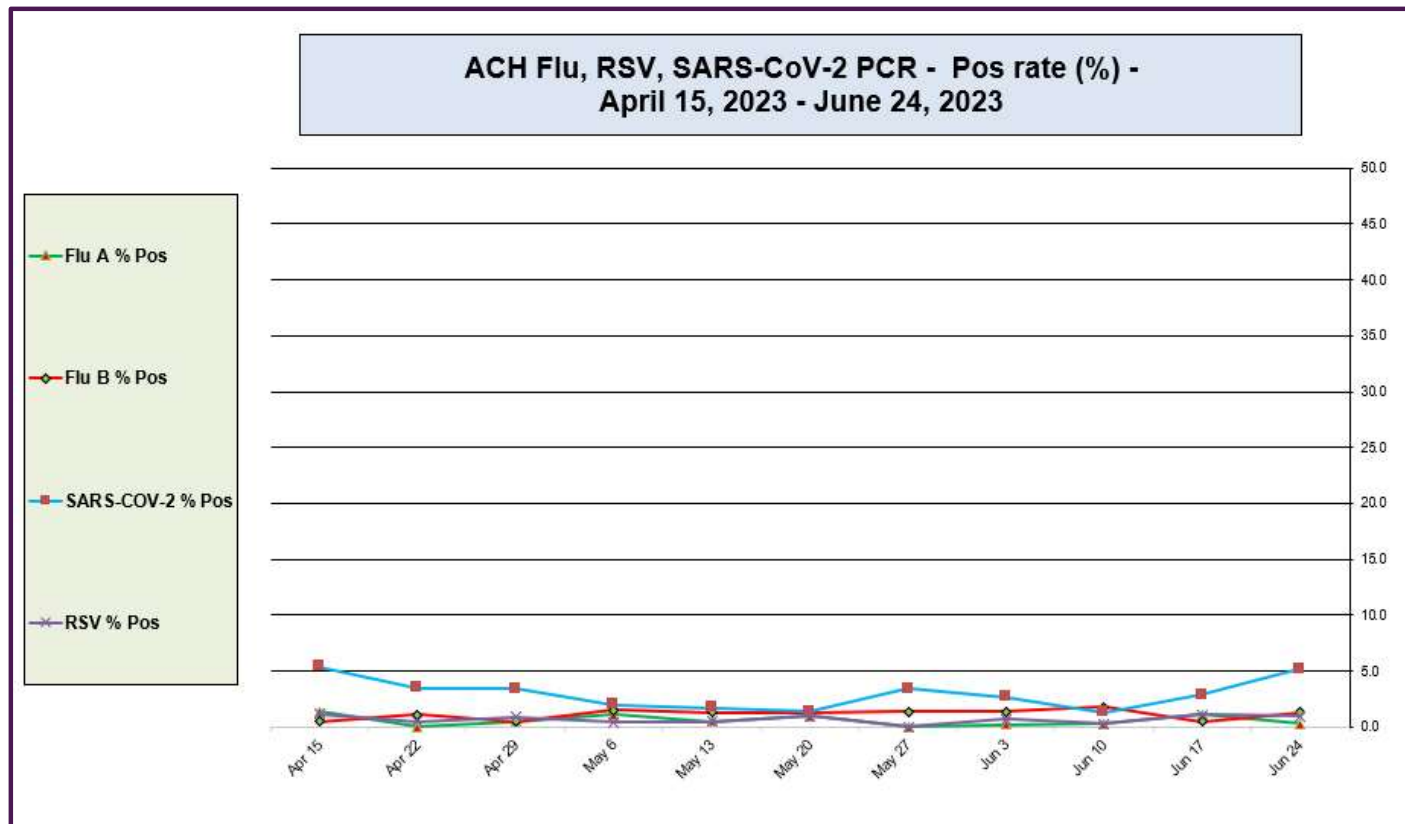
# ACL RSV PCR positivity rate (Apr 29, 2023 – Jun 24, 2023)



Data generated using: Respiratory Pathogen Panel (LAB9955) and COVID/FLU/RSV Panel (LAB10789)

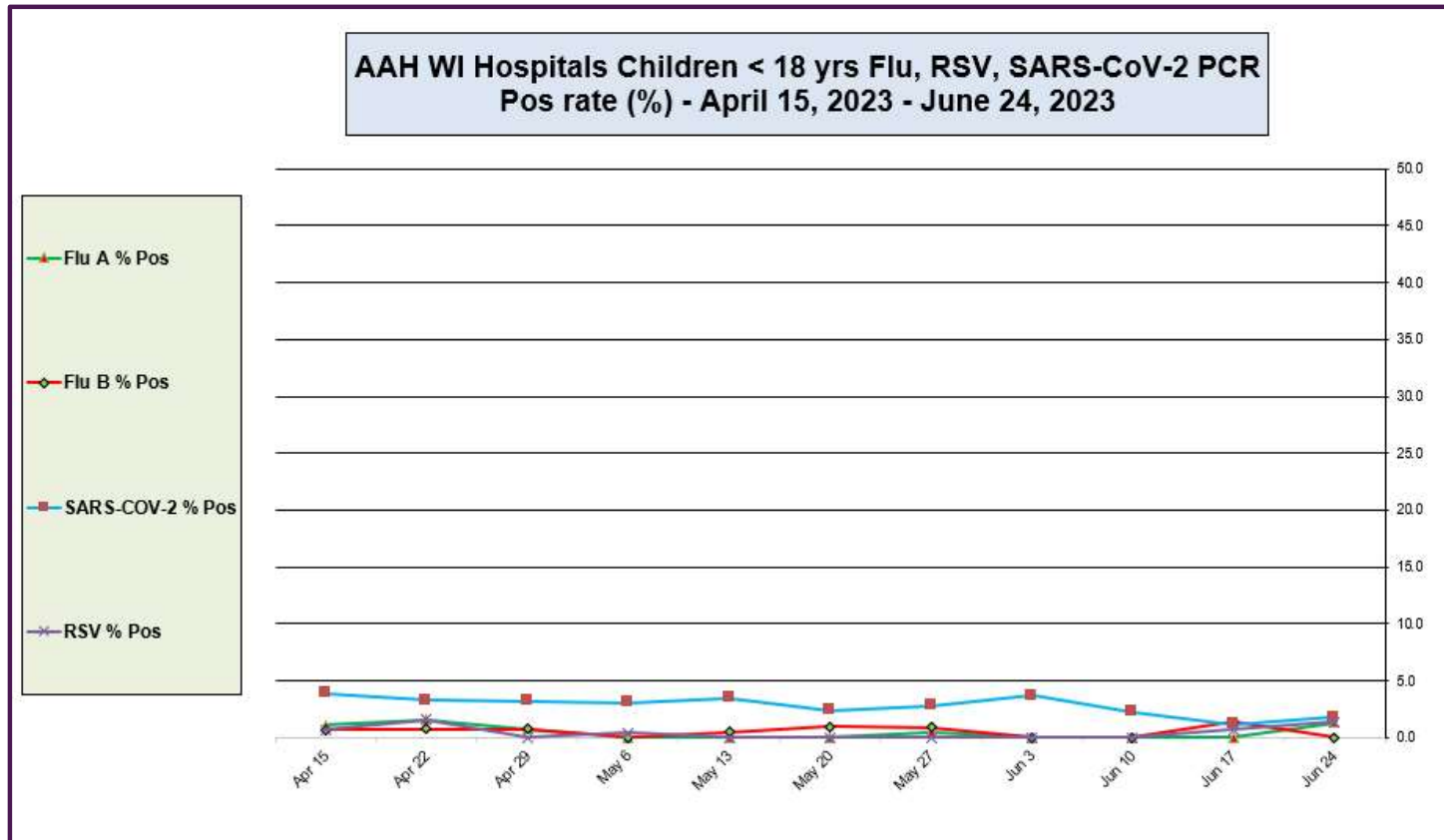


## Advocate Children's Hospital Influenza A, Influenza B, RSV, and SARS-CoV-2 PCR Positivity rates (April 15, 2023 – June 24, 2023)



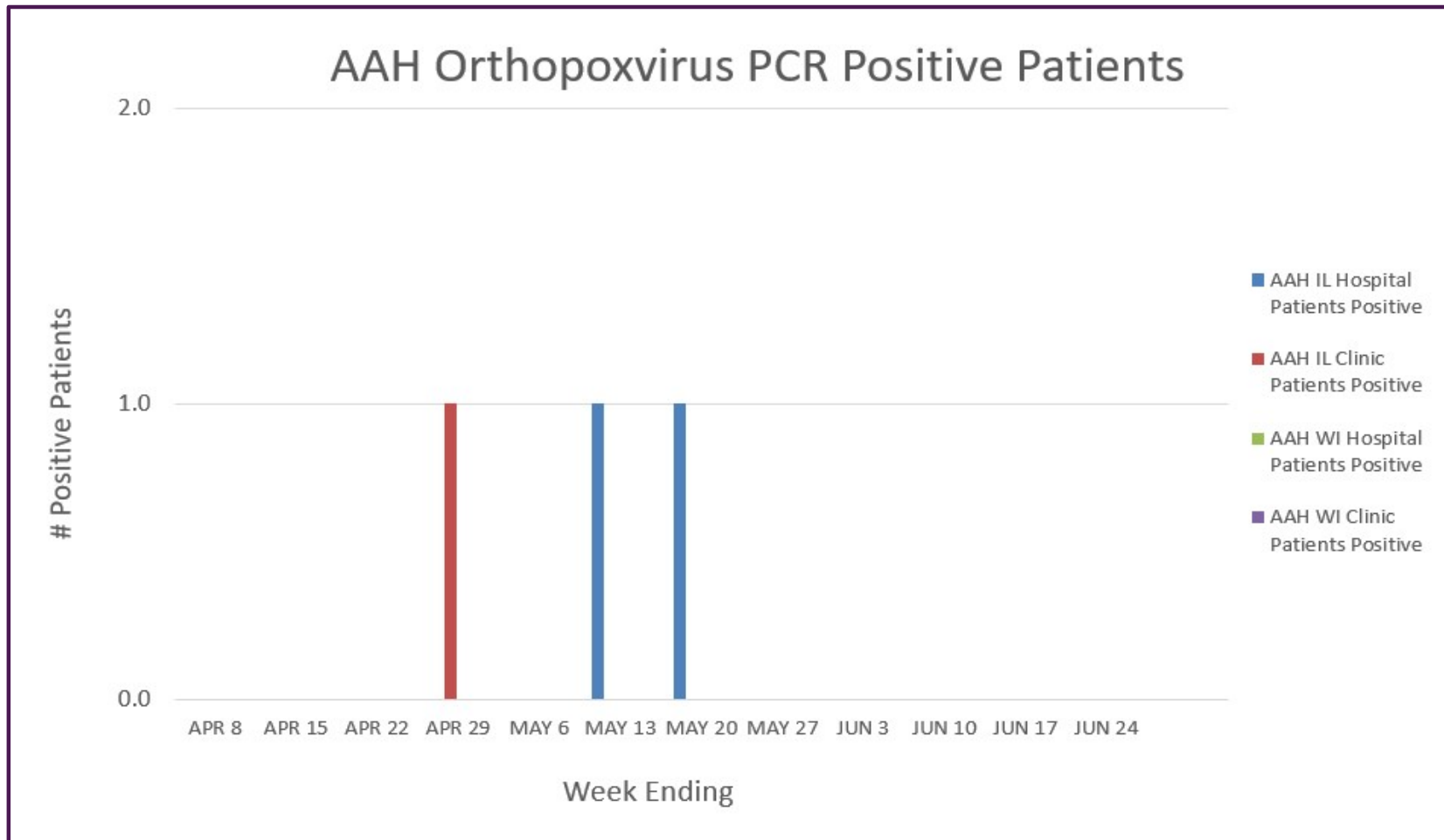
**Data generated using:** Respiratory Pathogen Panel (LAB9955), Rapid SARS-CoV-2 by PCR (LAB10644), COVID/FLU by PCR (LAB10889), COVID/FLU/RSV Panel (LAB10789), 2019 Novel Coronavirus (SARS-CoV-2) LAB10635

# AAH WI Hospitals (patients < 18 yrs old) Influenza A, Influenza B, RSV, and SARS-CoV-2 PCR Positivity rates (April 15, 2023 – June 24, 2023)



Data generated using: Respiratory Pathogen Panel (LAB9955), Rapid SARS-CoV-2 by PCR (LAB10644), COVID/FLU by PCR (LAB10889), COVID/FLU/RSV Panel (LAB10789), 2019 Novel Coronavirus (SARS-CoV-2) LAB10635

## AAH Orthopoxvirus Positive Patients (April 8, 2023 – June 24, 2023)



Data generated using: Miscellaneous Test (LAB10119 to Sent to IL/WI State Labs) 5/29/22-7/24/22 and Orthopoxvirus by PCR (LAB11274 sent to ARUP 7/25/22 – Present)