

# ACL Laboratories COVID-19 and Influenza Activity Report

Updated: June 8, 2022

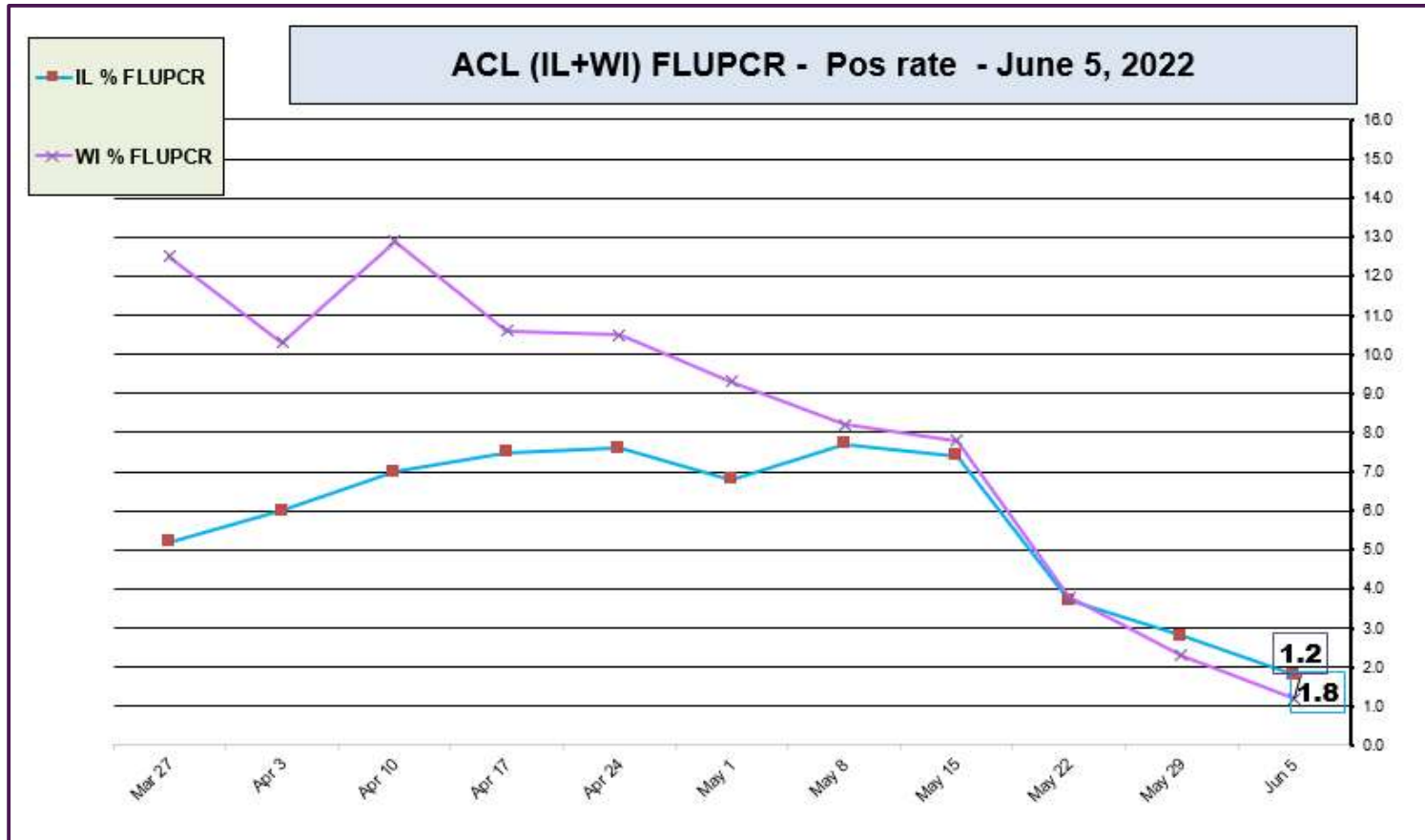


## RESPIRATORY PATHOGEN PANEL JULY 2021- JUNE 5, 2022 Positivity Rate (%)

MONTH	FLU A UnSub	FLU A (H1N1)	2009 H1N1	FLU A H3N2	FLU B	RSV A/B	PARA 1	PARA 2	PARA 3	PARA 4	COR 229E	COR NL63	COR OC43	COR HKU1	META	ENTERO/RHINO	Adeno	BOCA	Legio-nella	Chla-mydia	Mycoplasma
JUN 2022	0.0	0.0	0.0	0.7	0.0	1.4	0.7	0.0	11.3	0.3	0.0	0.0	0.7	0.0	5.5	17.5	1.4	1.0	0.0	0.0	0.0
MAY 2022	0.0	0.0	0.0	1.4	0.0	0.6	0.0	0.2	7.3	0.7	1.2	0.9	2.4	0.2	6.7	11.1	1.8	0.7	0.0	0.0	0.0
APR 2022	0.0	0.0	0.0	2.1	0.0	0.9	0.0	0.0	2.6	0.1	2.1	1.1	3.4	0.2	10.5	9.4	1.3	0.7	0.0	0.0	0.0
MAR 2022	0.0	0.0	0.0	1.6	0.0	0.8	0.0	0.1	1.1	0.2	1.3	0.6	4.4	0.1	6.9	11.7	2.6	1.2	0.0	0.0	0.0
FEB 2022	0.0	0.0	0.0	1.3	0.0	1.4	0.0	0.0	0.0	0.2	0.7	0.0	2.1	0.0	4.8	8.0	1.9	3.2	0.0	0.0	0.0
JAN 2022	0.0	0.0	0.0	1.3	0.0	1.6	0.0	0.5	0.6	0.5	0.6	0.0	1.2	0.0	3.9	4.6	1.3	1.8	6.2	0.0	0.0
DEC 2021	0.0	0.0	0.0	2.7	0.0	4.4	0.0	0.8	1.4	1.4	0.4	0.1	1.6	0.2	2.7	11.4	2.3	4.4	0.0	0.0	0.0
NOV 2021	0.0	0.1	0.1	0.7	0.0	7.6	0.1	1.5	0.9	1.5	0.2	0.1	0.9	0.0	1.0	18.3	1.4	3.7	0.1	0.0	0.0
OCT 2021	0.0	0.0	0.0	0.0	0.0	7.8	0.0	1.6	1.2	1.0	0.1	0.0	0.4	0.0	0.3	21.0	1.2	4.0	0.2	0.0	0.0
SEP 2021	0.0	0.0	0.0	0.0	0.0	11.3	0.0	0.9	1.8	0.4	0.0	0.0	0.4	0.0	0.6	23.6	0.8	4.1	0.1	0.0	0.1
AUG 2021	0.0	0.0	0.0	0.0	0.0	13.3	0.0	1.2	6.2	0.1	0.1	0.1	0.5	0.0	0.7	14.0	1.3	3.6	0.2	0.0	0.0
JUL 2021	0.0	0.0	0.0	0.0	0.0	8.2	0.1	0.5	12.9	0.0	0.1	0.4	1.4	0.0	0.5	18.9	1.6	4.4	0.0	0.0	0.0

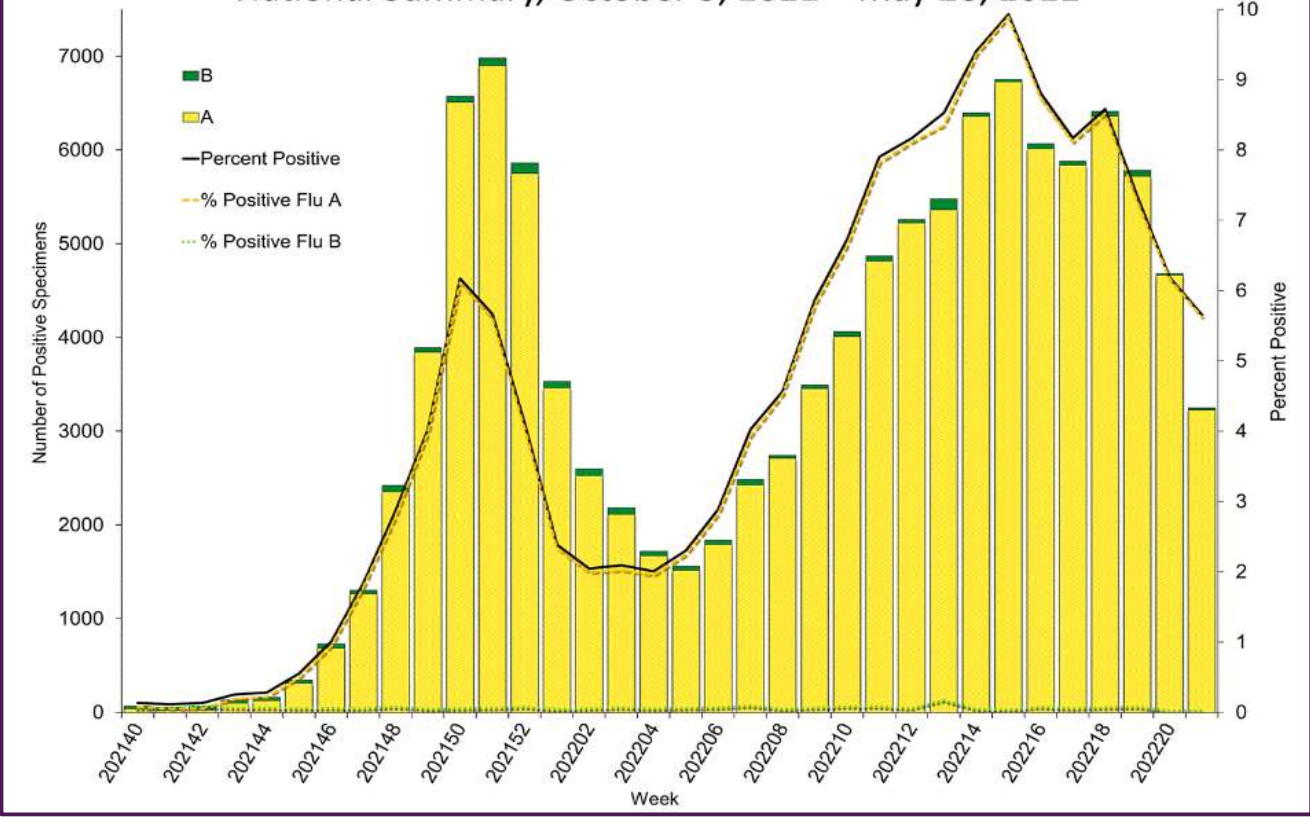
Data generated using: RPPNL (LAB9955)

## ACL INFLUENZA positivity rate (MAR 2022 – June 5, 2022)

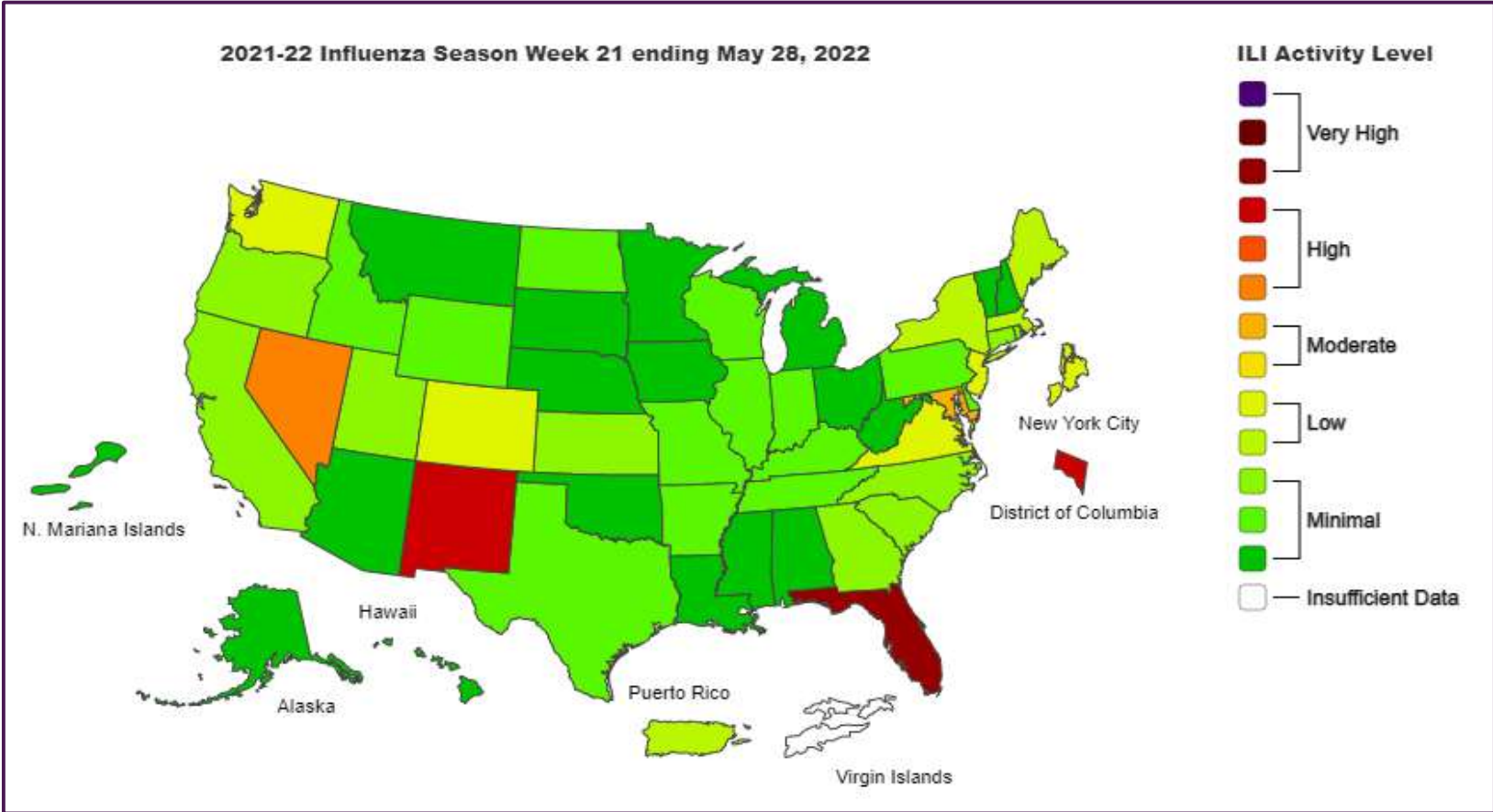


Data generated using: Respiratory Pathogen Panel (LAB9955), Influenza PCR, COVID/FLU/RSV Panel (LAB10789), COVID/Flu by PCR (LAB10889), and SARS-CoV-2/Influenza by PCR (LAB11071)

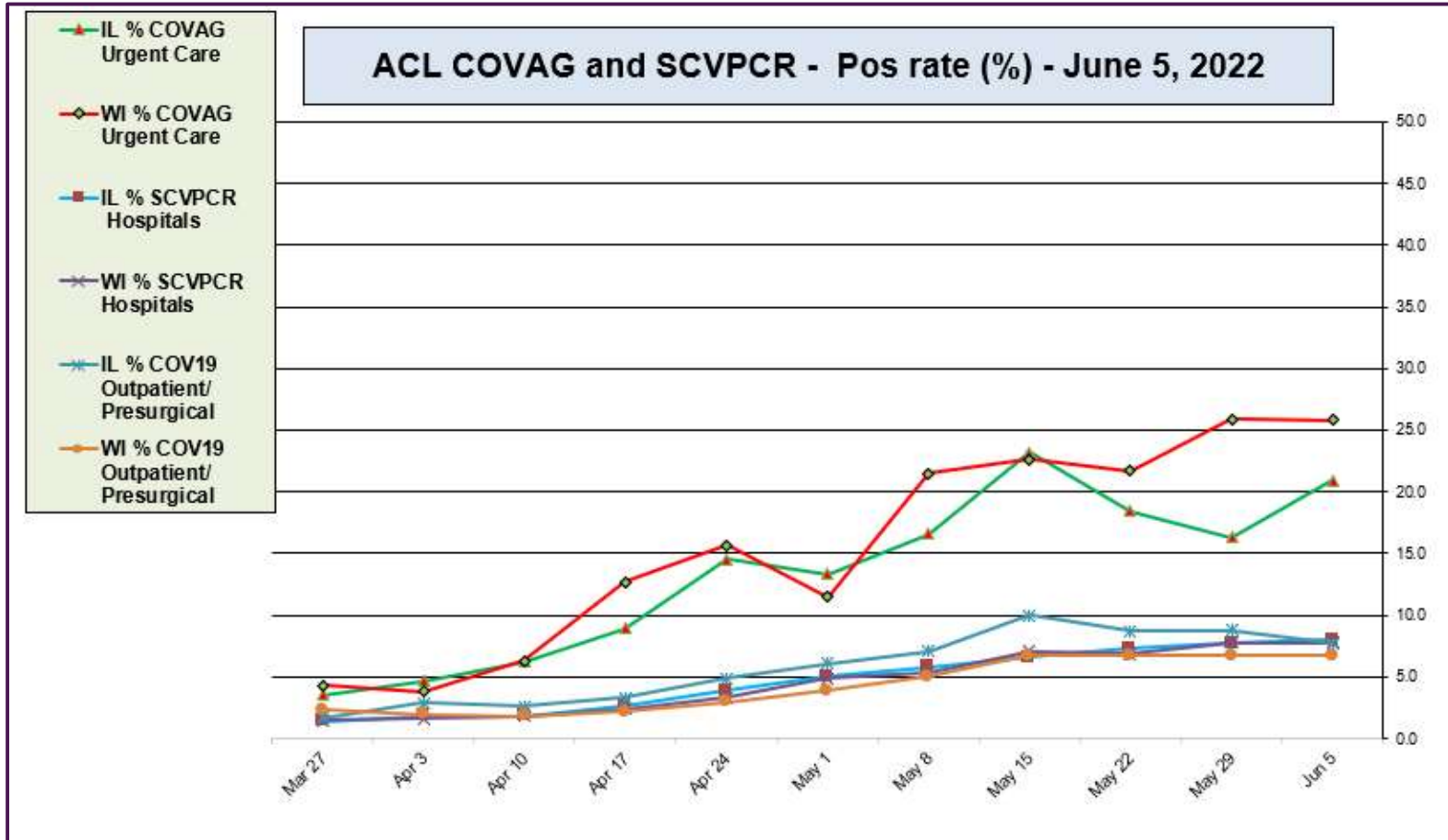
Influenza Positive Tests Reported to CDC by U.S. Clinical Laboratories, National Summary, October 3, 2021 – May 28, 2022



<https://www.cdc.gov/>

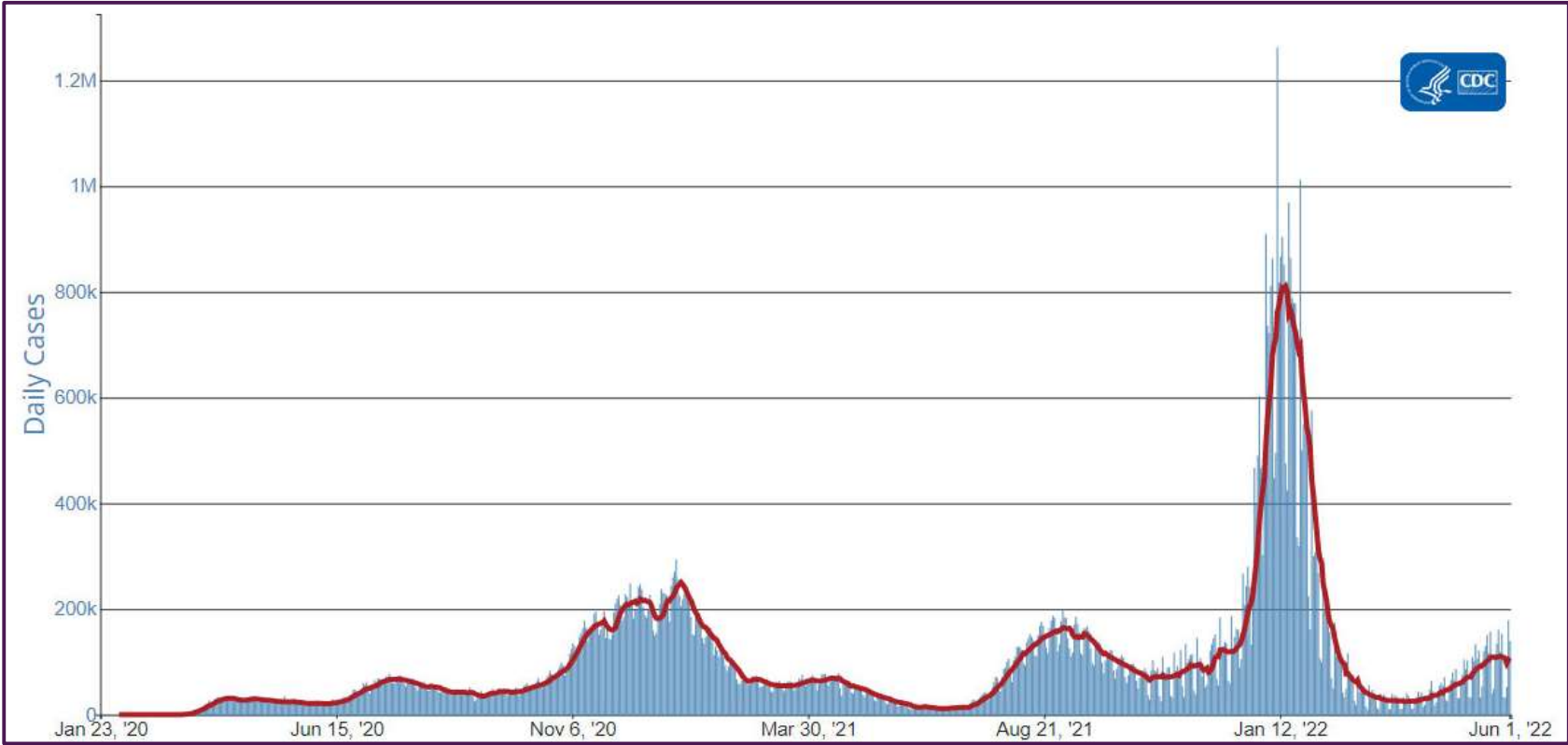


<https://www.cdc.gov/>



Data generated using: RAPID SARS-COV-2 BY PCR (LAB10644) COVID-19 ANTIGEN TEST (SOFIA) (LAB10715), COVID/FLU/RSV Panel (LAB10789)

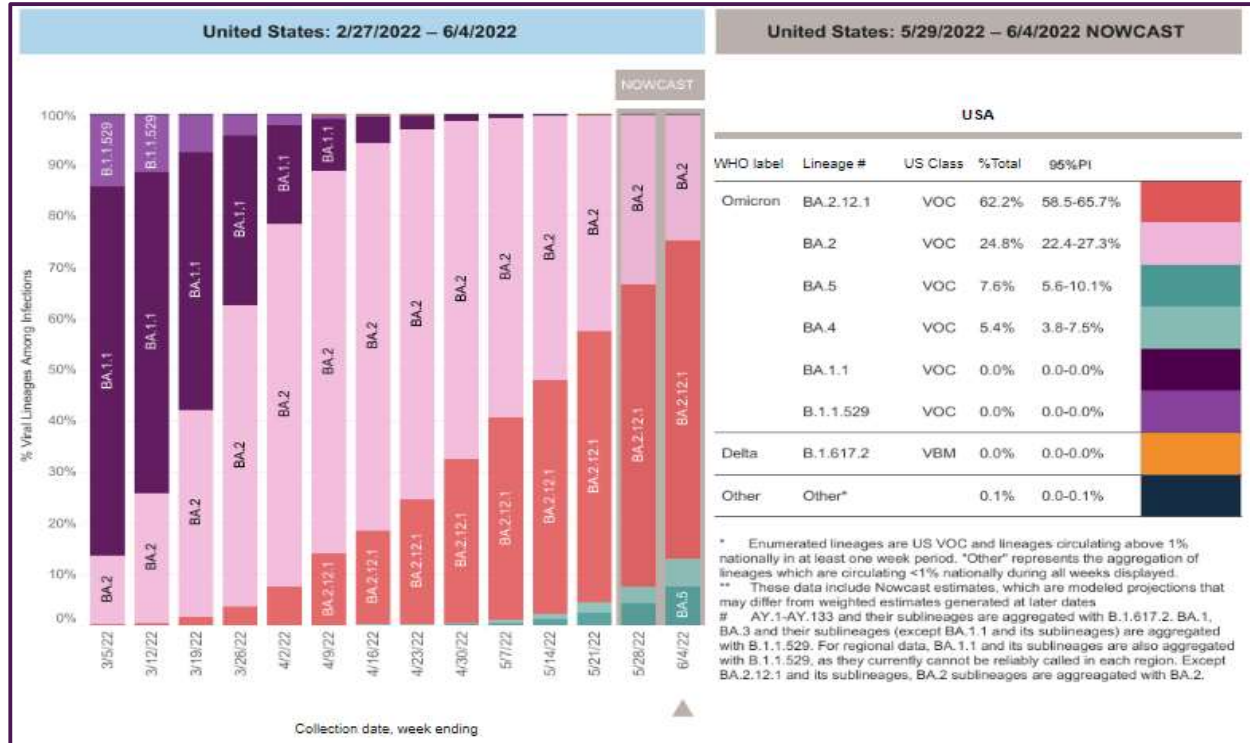
### CDC- Daily COVID-19 cases in US – Jan 23 – June 1, 2022



CDC SARS-CoV-2 positivity rate

<https://www.cdc.gov/>

**MAY 28, 2022 – SARS-CoV-2 circulating in the Midwest based on projection by Nowcast modeling  
(Omicron BA.2 – 24.8% ↓, BA2.12.1 – 62.2%↑, BA.4 – 5.4%↑, BA.5 – 7.6%↑ )**

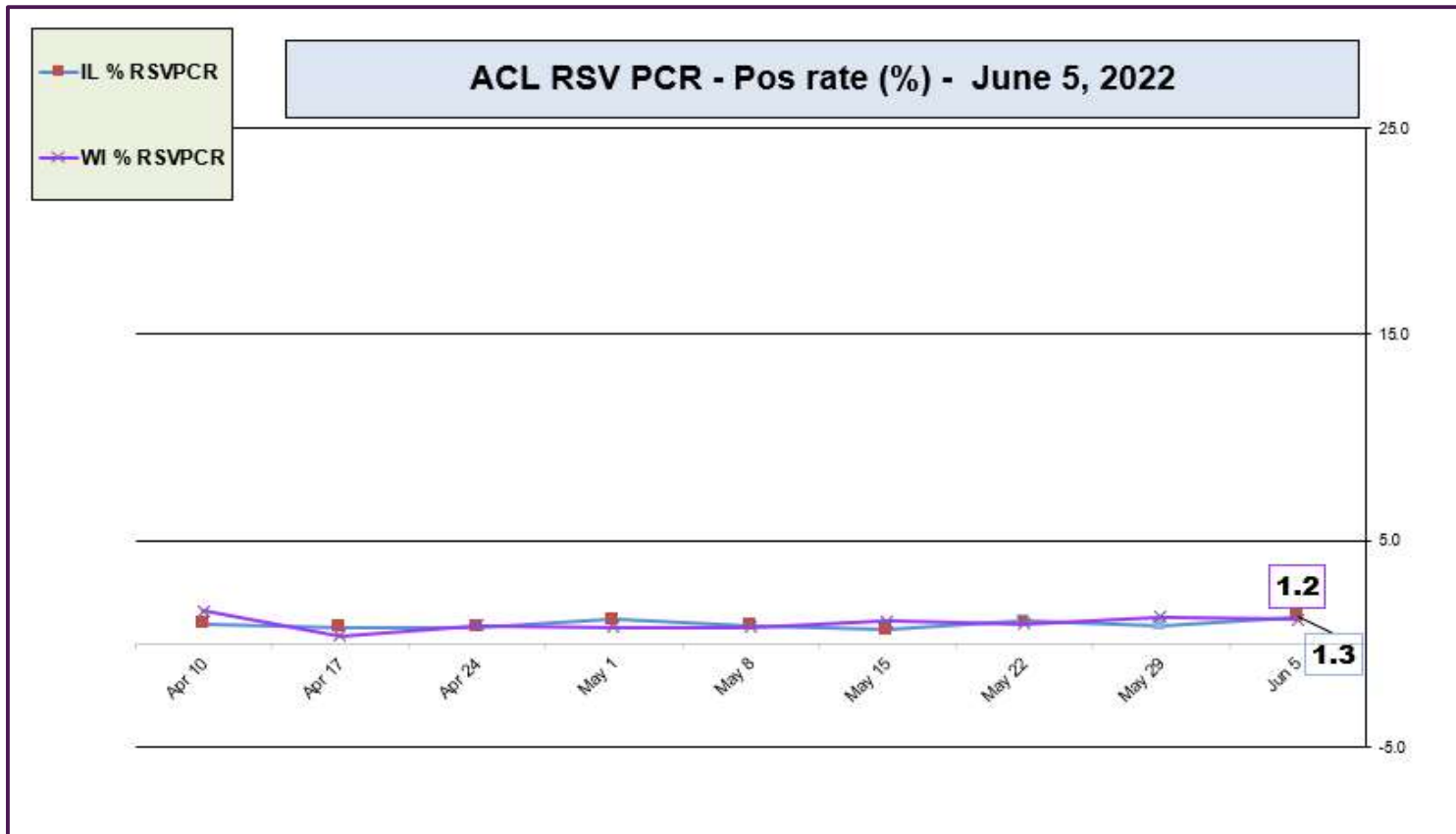


\*\* CDC uses **Nowcast** model that estimates more recent proportions of circulating variants (actual sequencing data is typically delayed for 2 weeks).

<https://www.cdc.gov/>



## ACL RSV PCR positivity rate (Apr 2022 – June 5, 2022)



Data generated using: Respiratory Pathogen Panel (LAB9955) and COVID/FLU/RSV Panel (LAB10789)