

ACL Laboratories Respiratory Virus Activity Report

Updated: November 8, 2023

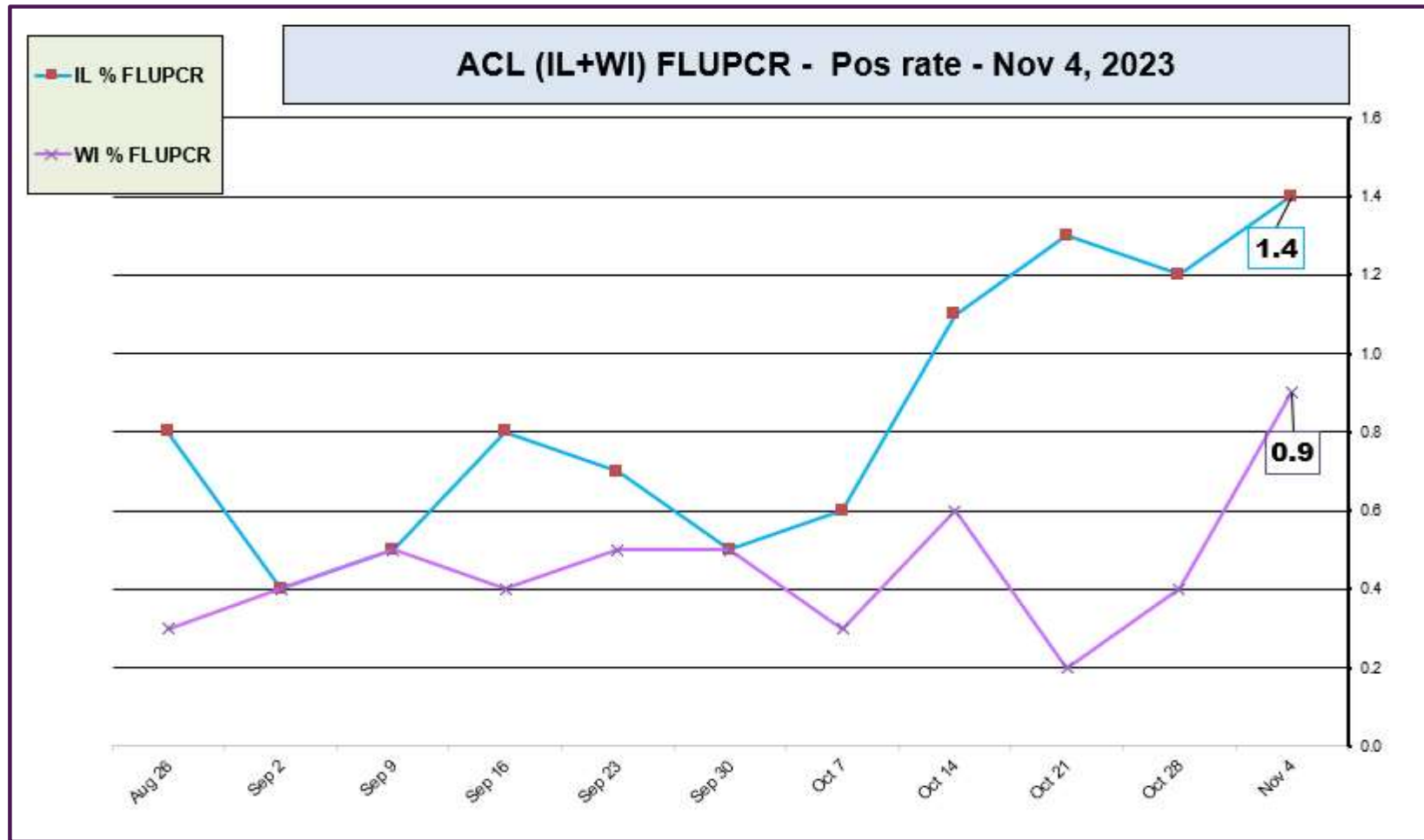


RESPIRATORY PATHOGEN PANEL DECEMBER 2022 - NOVEMBER 8, 2023 Positivity Rate (%)

MONTH	FLU A UnSub	FLU A (H1N1)	2009 H1N1	FLU A H3N2	FLU B	RSV A/B	PARA 1	PARA 2	PARA 3	Para 4	COR 229E	COR NL63	COR OC43	COR HKU1	SARS-CoV-2	Human META	E/R	Adeno	BOCA	Chlamydo phila	Myco plasma	B. pertussis	B. paraper
NOV 2023	0.0	0.0	0.2	0.0	0.0	3.9	2.2	1.0	0.2	1.5	0.0	0.0	0.2	0.0	4.6	1.0	16.5	4.9	N/A	0.0	0.2	0.0	0.5
OCT 2023	0.0	0.0	0.2	0.0	0.1	2.3	2.4	0.8	0.3	1.0	0.1	0.1	0.2	0.0	1.4	0.5	19.1	2.6	0.3	0.0	0.4	N/A	N/A
SEP 2023	0.0	0.0	0.1	0.0	0.0	0.2	1.2	1.0	0.4	0.4	0.0	0.0	0.1	0.0	N/A	0.7	24.0	1.8	0.5	0.0	0.1	N/A	N/A
AUG 2023	0.0	0.0	0.4	0.0	0.1	0.0	0.4	1.4	1.6	0.5	0.0	0.0	0.7	0.0	N/A	2.9	13.3	2.3	0.4	0.0	0.0	N/A	N/A
JUL 2023	0.0	0.0	0.0	0.1	0.1	0.4	1.2	1.7	1.5	0.9	0.0	0.3	0.0	0.0	N/A	3.1	11.1	2.4	0.2	0.0	0.0	N/A	N/A
JUN 2023	0.0	0.0	0.1	0.0	0.1	0.3	0.8	1.6	5.2	0.0	0.1	0.1	0.1	0.0	N/A	0.5	11.3	3.5	0.3	0.0	0.0	N/A	N/A
MAY 2023	0.0	0.1	0.2	0.0	0.1	0.2	0.5	1.1	6.8	0.1	0.1	0.9	0.1	0.1	N/A	3.2	17.1	3.2	0.5	0.0	0.0	N/A	N/A
APR 2023	0.0	0.0	0.2	0.1	0.1	0.1	0.4	0.5	5.4	0.1	0.3	0.9	0.2	0.5	N/A	11.1	12.1	3.1	1.0	0.0	0.0	N/A	N/A
MAR 2023	0.1	0.0	0.1	0.0	0.1	0.2	0.4	0.1	2.7	0.0	0.3	1.9	0.8	0.8	N/A	13.3	13.1	3.2	1.4	0.0	0.0	N/A	N/A
FEB 2023	0.0	0.0	0.2	0.1	0.0	0.5	0.0	0.4	1.2	0.2	0.0	3.7	1.5	1.6	N/A	9.3	13.2	3.7	1.6	0.0	0.0	N/A	N/A
JAN 2023	0.2	0.0	0.5	0.5	0.1	1.2	0.7	0.1	0.8	0.3	0.2	1.2	2.0	1.4	N/A	5.9	12.1	3.3	2.9	0.0	0.0	N/A	N/A
DEC 2022	0.3	0.1	1.0	7.0	0.1	3.6	1.1	0.2	0.5	1.5	0.3	0.6	1.7	1.3	N/A	2.1	11.7	2.9	4.0	0.1	0.1	N/A	N/A

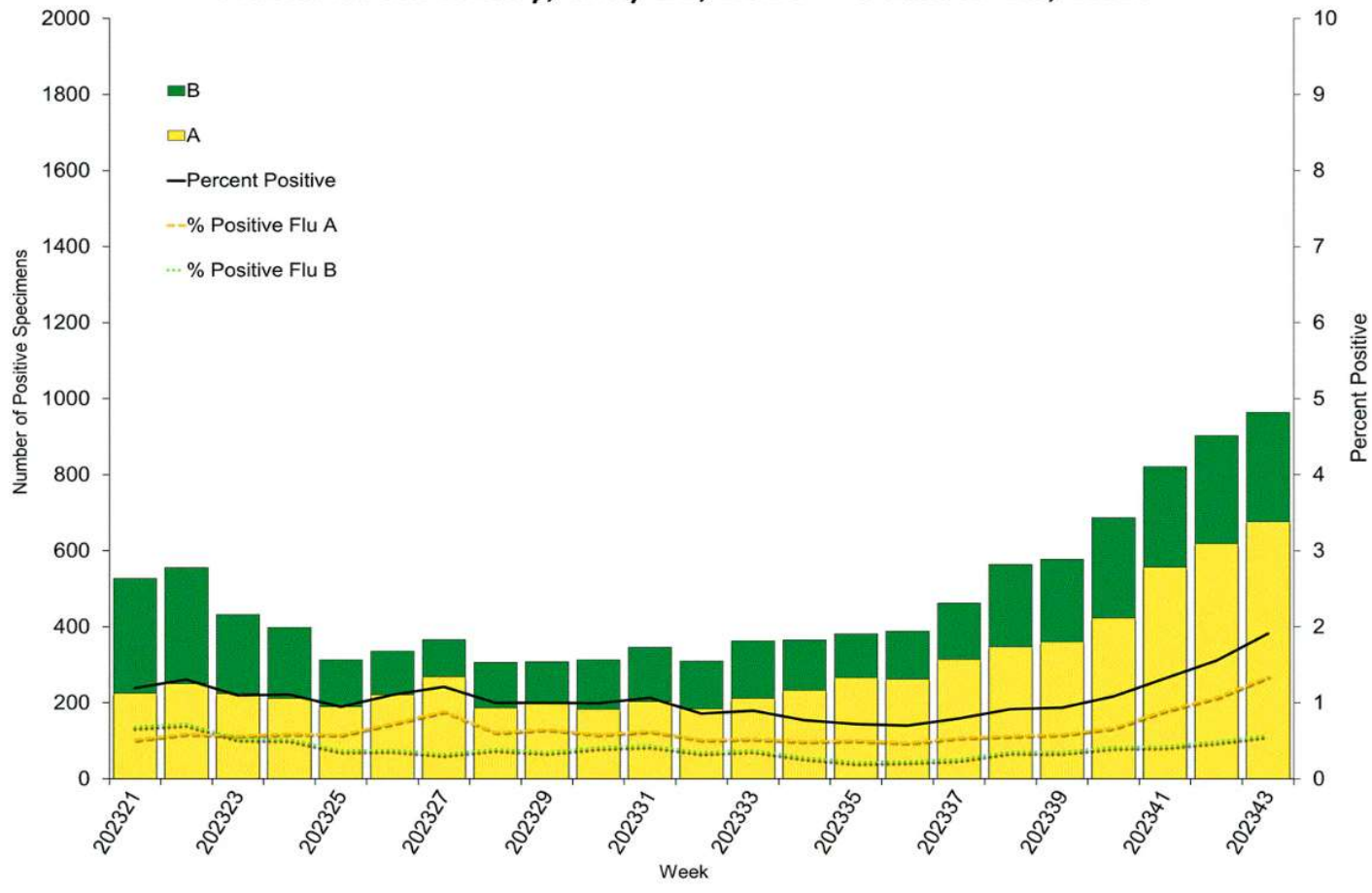
Data generated using: Respiratory Pathogen Panel (prior to 10/16/23) and Rapid Respiratory Pathogen Panel (beginning 10/16/23)

ACL INFLUENZA positivity rate (Aug 26, 2023 – Nov 4, 2023)



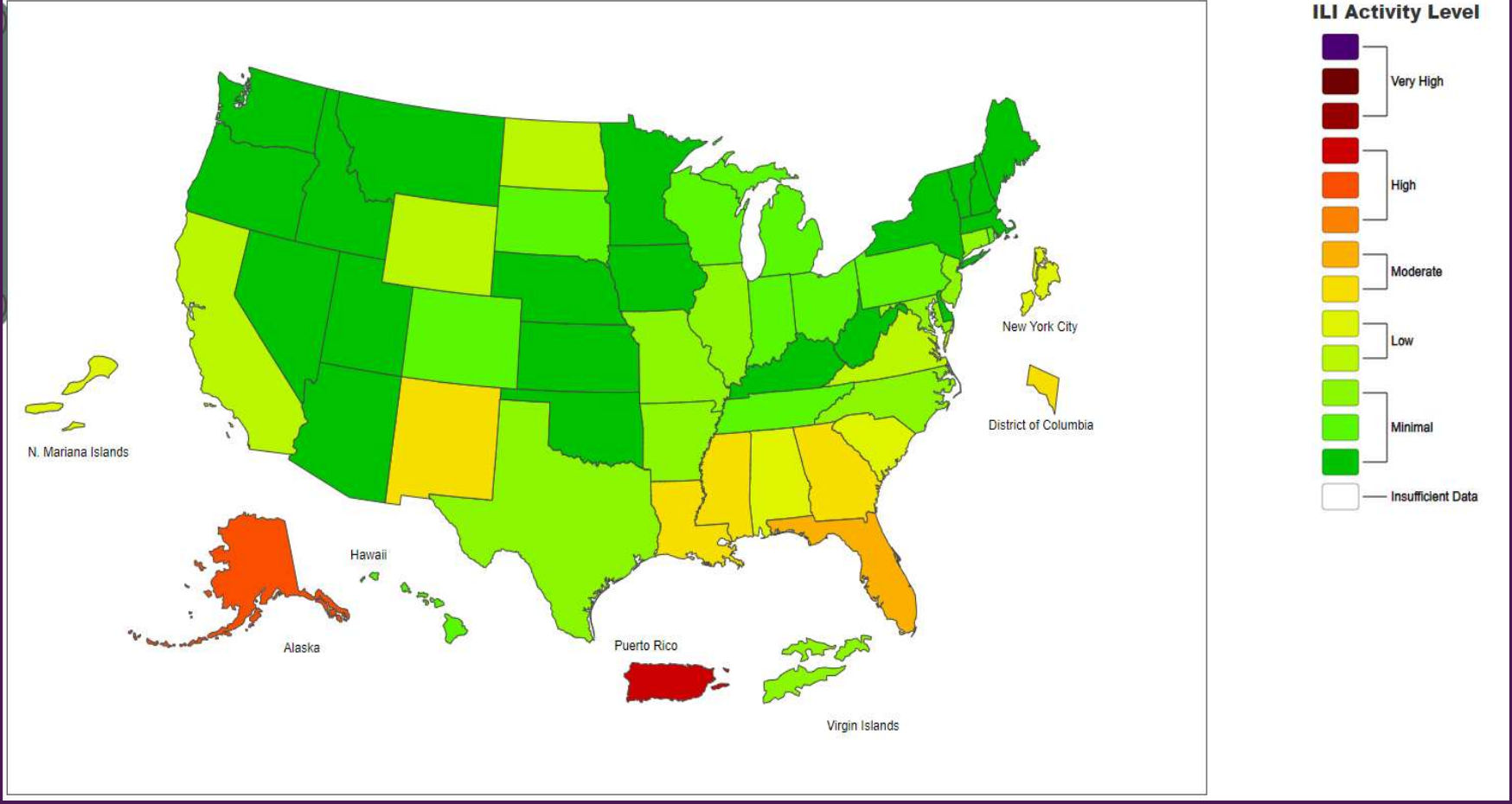
Data generated using: Rapid Respiratory Pathogen Panel (LAB9039), Influenza PCR, COVID/FLU/RSV Panel (LAB10789), COVID/Flu by PCR (LAB10889), and SARS-CoV-2/Influenza by PCR (LAB11071)

Influenza Positive Tests Reported to CDC by U.S. Clinical Laboratories, National Summary, May 21, 2023 – October 28, 2023



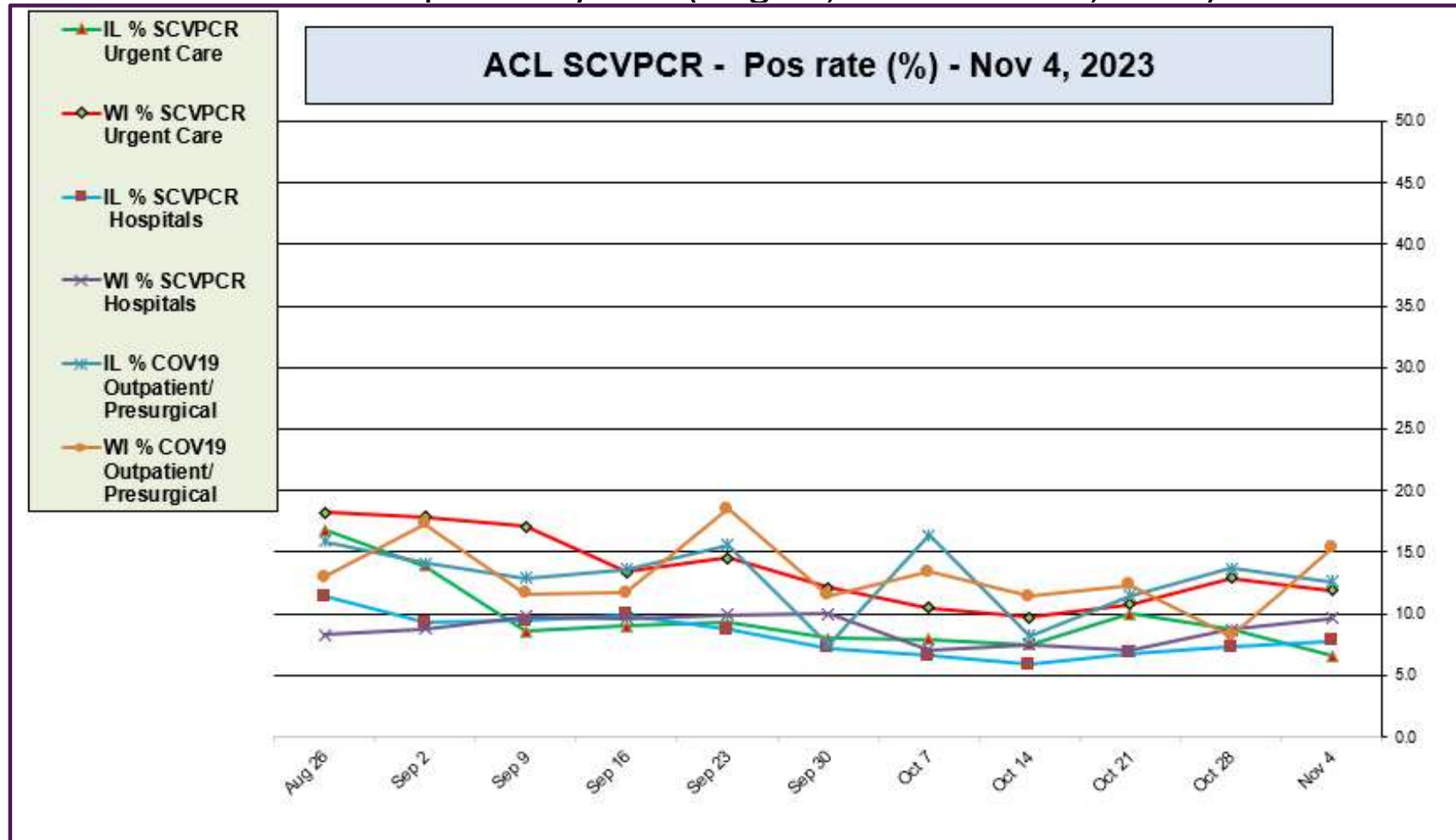
<https://www.cdc.gov/>

2023-24 Influenza Season Week 43 ending Oct 28, 2023



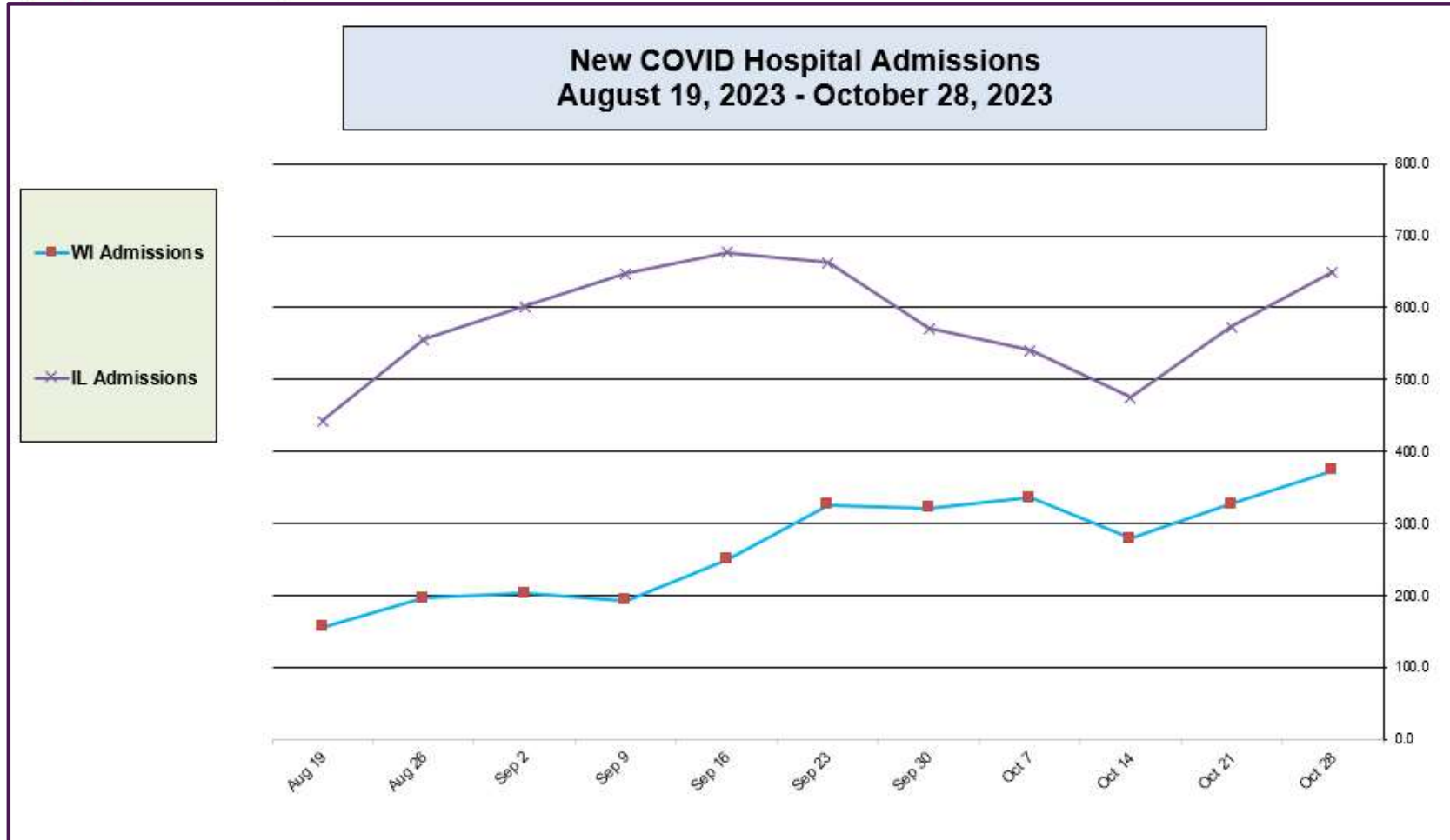
<https://www.cdc.gov/>

ACL SARS-CoV-2 positivity rate (Aug 26, 2023 – Nov 4, 2023)



Data generated using: RAPID SARS-COV-2 BY PCR (LAB10644), COVID/FLU/RSV Panel (LAB10789) , prior to 9/17 COVID-19 ANTIGEN TEST (SOFIA) (LAB10715) , post 9/17 LAB10644 performed at WI and IL urgent cares sites, and Rapid Respiratory Pathogen Panel (LAB9039)

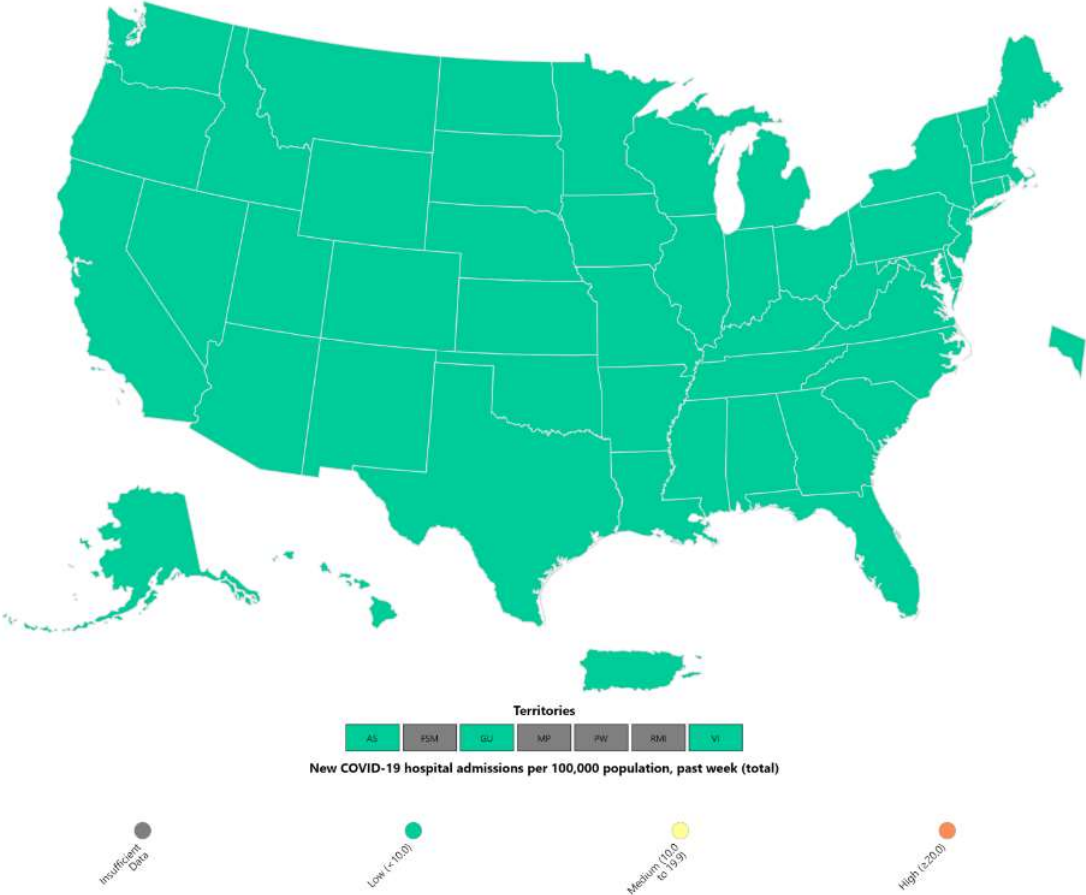
New COVID Hospital Admissions from CDC Data (Aug 19, 2023 – Oct 28, 2023)



Data generated from: https://covid.cdc.gov/covid-data-tracker/#maps_new-admissions-rate-state

COVID Hospital Admission Rates Per 100,000 from CDC Data (Week Ending Oct 28, 2023)

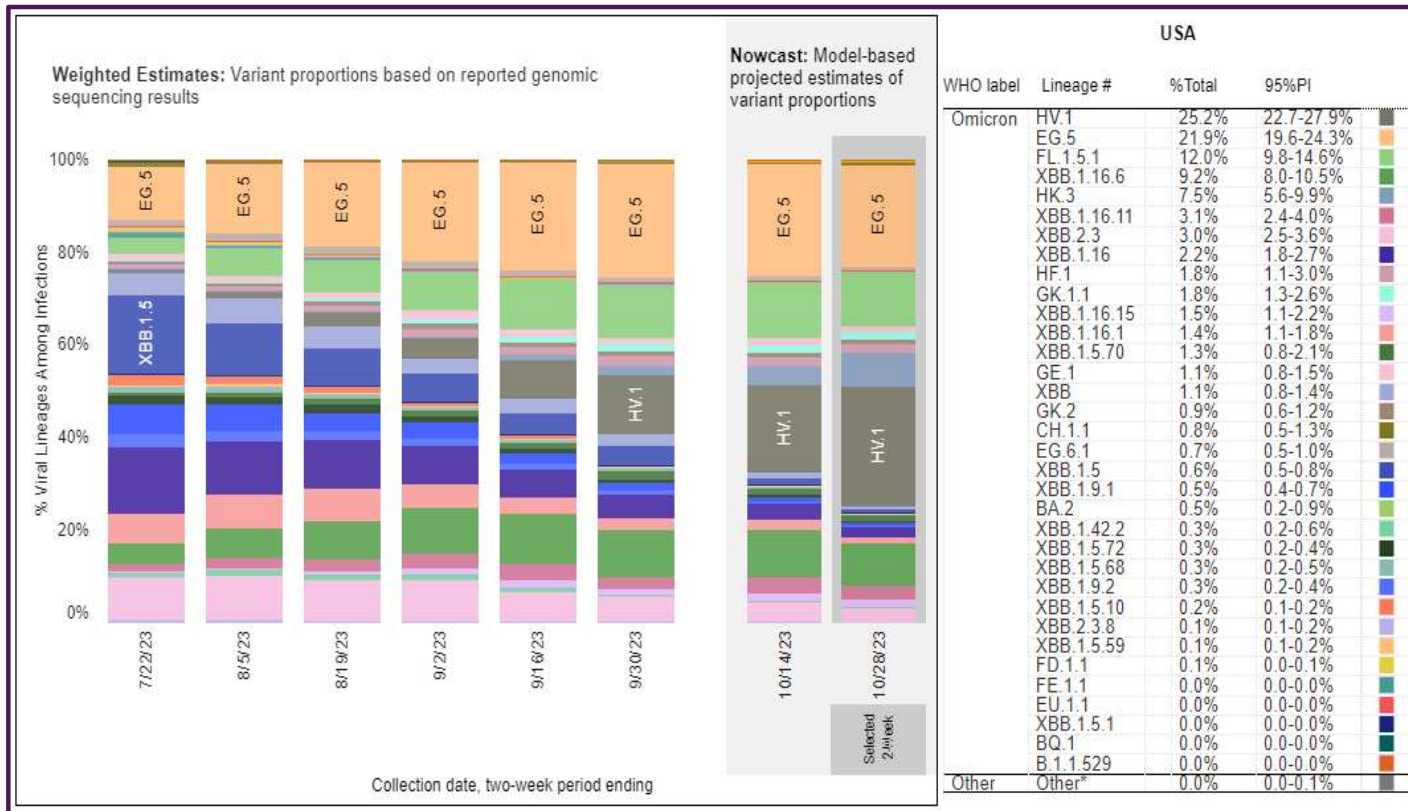
Reported COVID-19 New Hospital Admissions Rate per 100,000 Population in the Past Week, by State/Territory - United States



Data generated from: https://covid.cdc.gov/covid-data-tracker/#maps_new-admissions-rate-state

October 28, 2023 – TOP 5 SARS-CoV-2 Strains circulating in the Midwest by Nowcast modeling

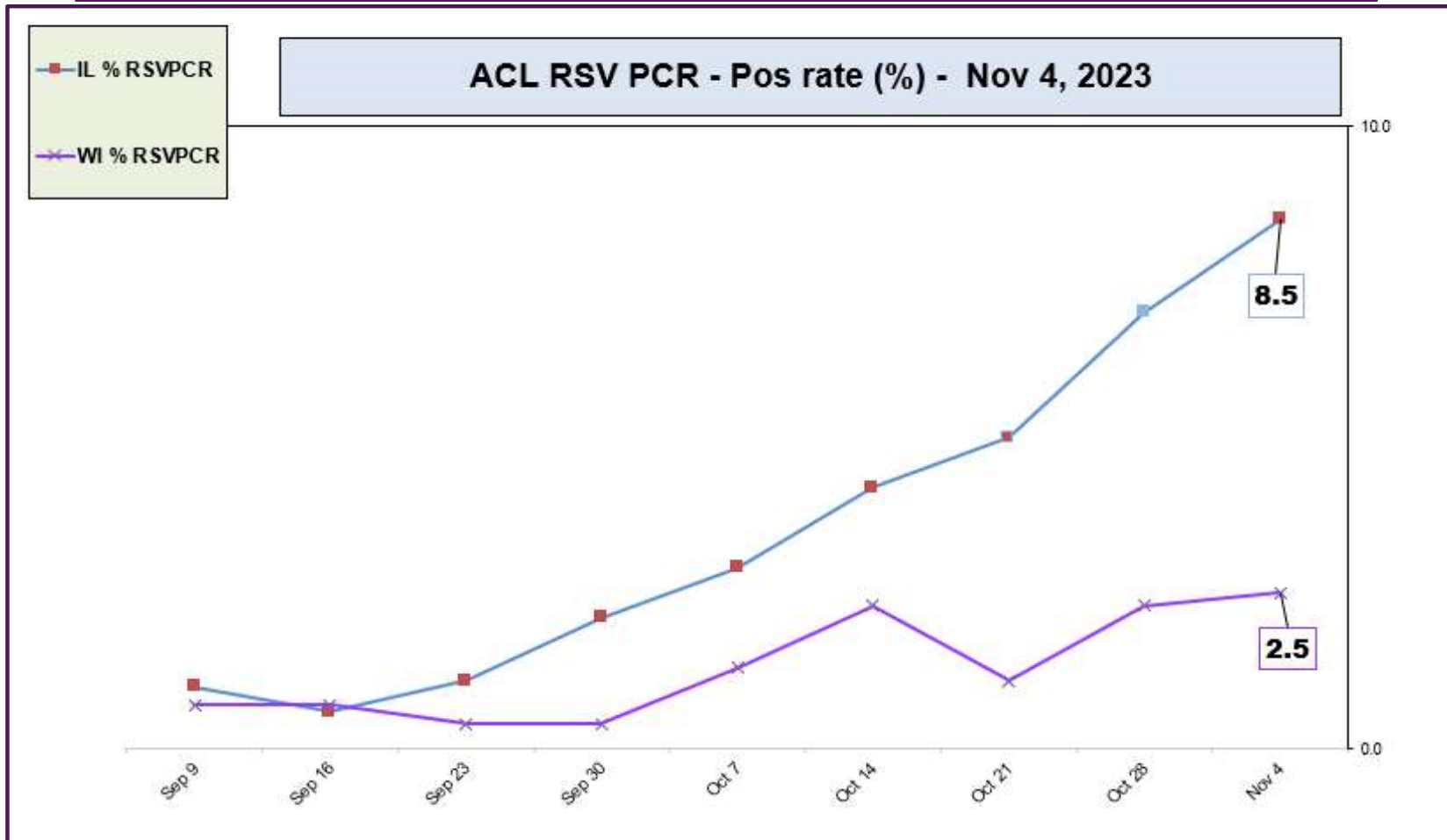
(Omicron HV.1 – 25.2% ↑, EG.5 – 21.9% ↓, FL.1.5.1 12.0% ↓, XBB.1.16.6 – 9.2% ↓, HK.3 7.5% ↑)



** CDC uses **Nowcast** model that estimates more recent proportions of circulating variants (actual sequencing data is typically delayed for 2 weeks).

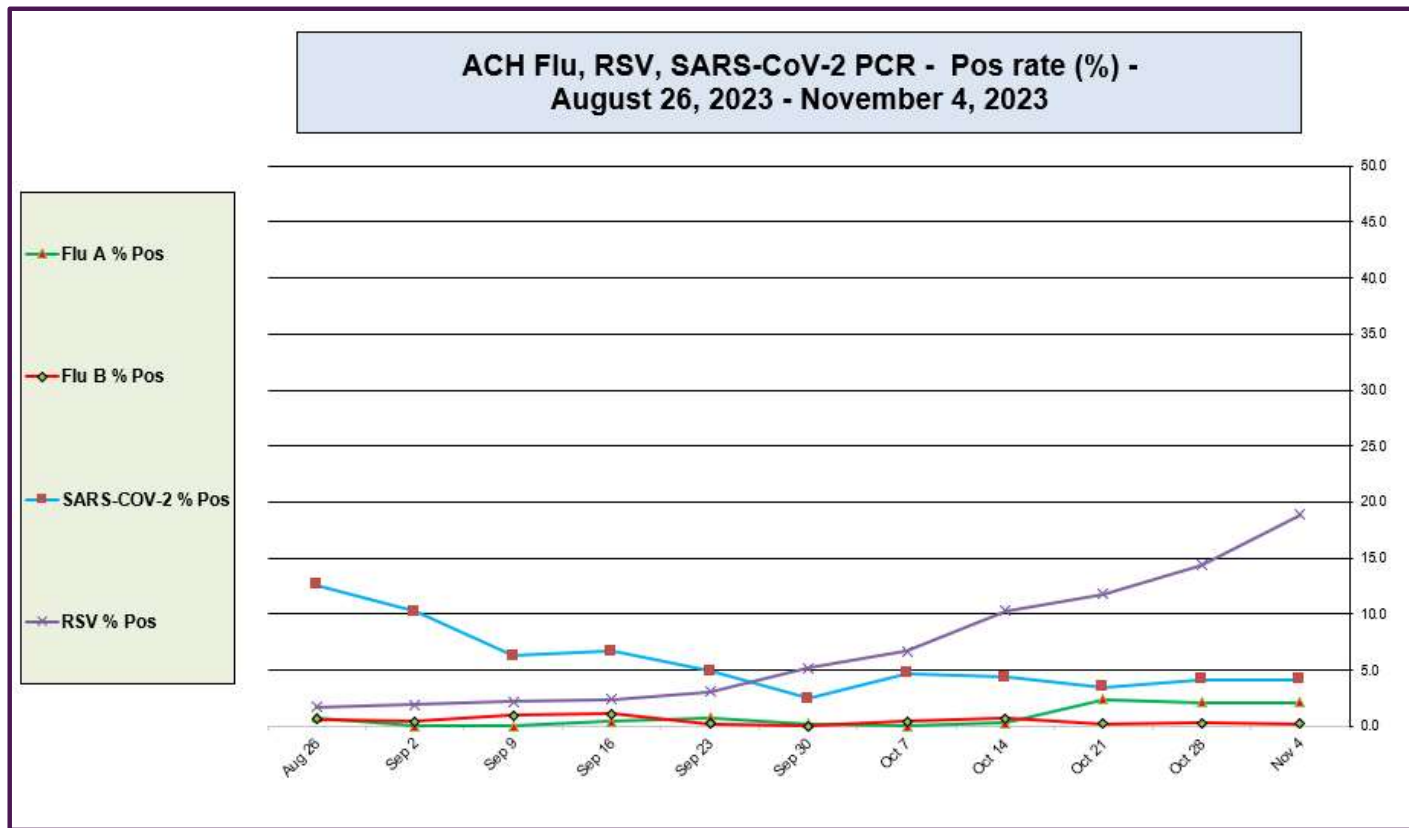
<https://www.cdc.gov/>

ACL RSV PCR positivity rate (Sep 9, 2023 – Nov 4, 2023)



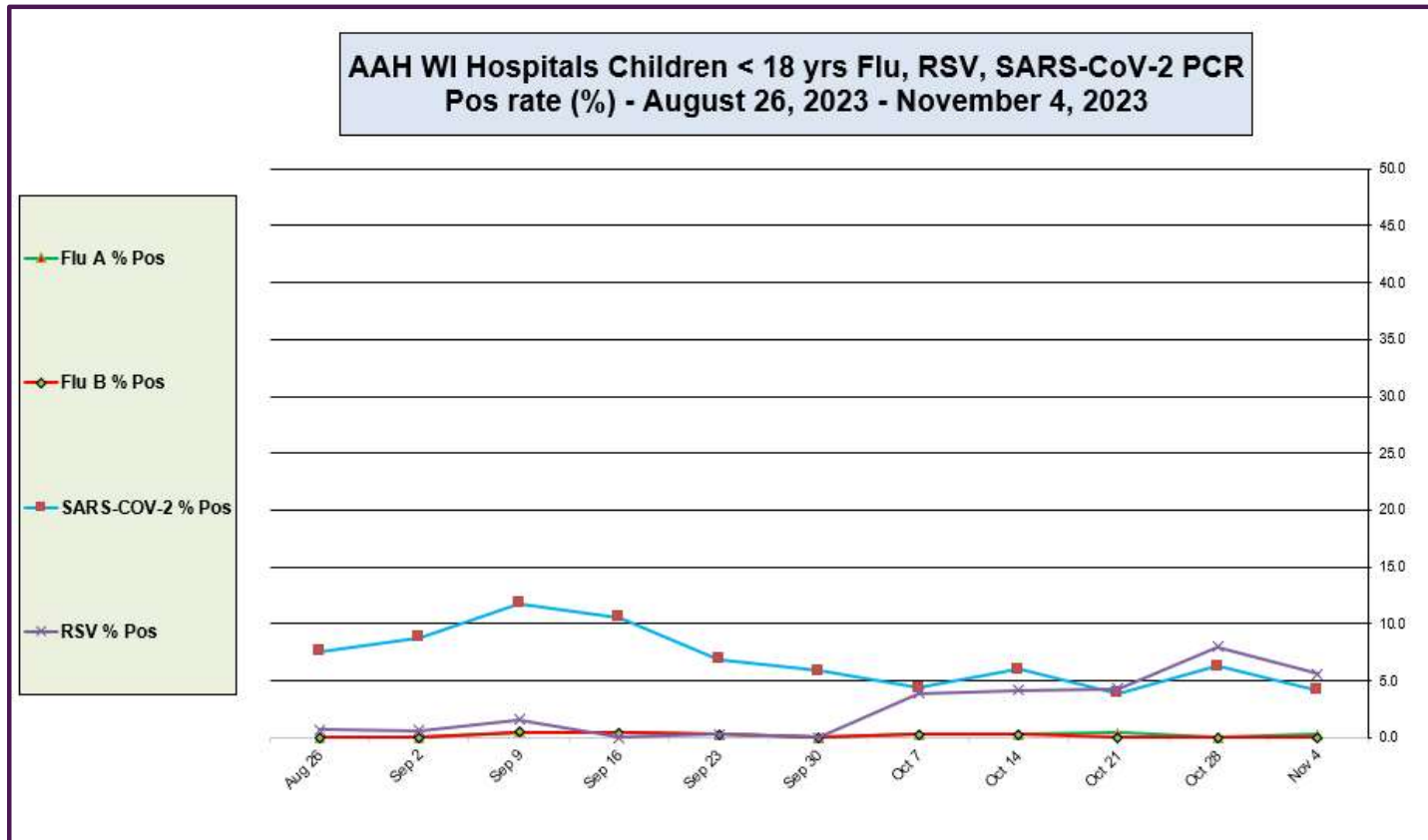
Data generated using: Rapid Respiratory Pathogen Panel (LAB9039) and COVID/FLU/RSV Panel (LAB10789)

Advocate Children's Hospital Influenza A, Influenza B, RSV, and SARS-CoV-2 PCR Positivity rates (Aug 26, 2023 – Nov 4, 2023)



Data generated using: Respiratory Pathogen Panel (LAB9955), Rapid Respiratory Pathogen Panel (LAB9039), Rapid SARS-CoV-2 by PCR (LAB10644), COVID/FLU by PCR (LAB10889), COVID/FLU/RSV Panel (LAB10789), 2019 Novel Coronavirus (SARS-CoV-2) LAB10635

AAH WI Hospitals (patients < 18 yrs old) Influenza A, Influenza B, RSV, and SARS-CoV-2 PCR Positivity rates (Aug 26, 2023 – Nov 4, 2023)



Data generated using: Respiratory Pathogen Panel (LAB9955), Rapid Respiratory Pathogen Panel (LAB9039), Rapid SARS-CoV-2 by PCR (LAB10644), COVID/FLU by PCR (LAB10889), COVID/FLU/RSV Panel (LAB10789), 2019 Novel Coronavirus (SARS-CoV-2) LAB10635