

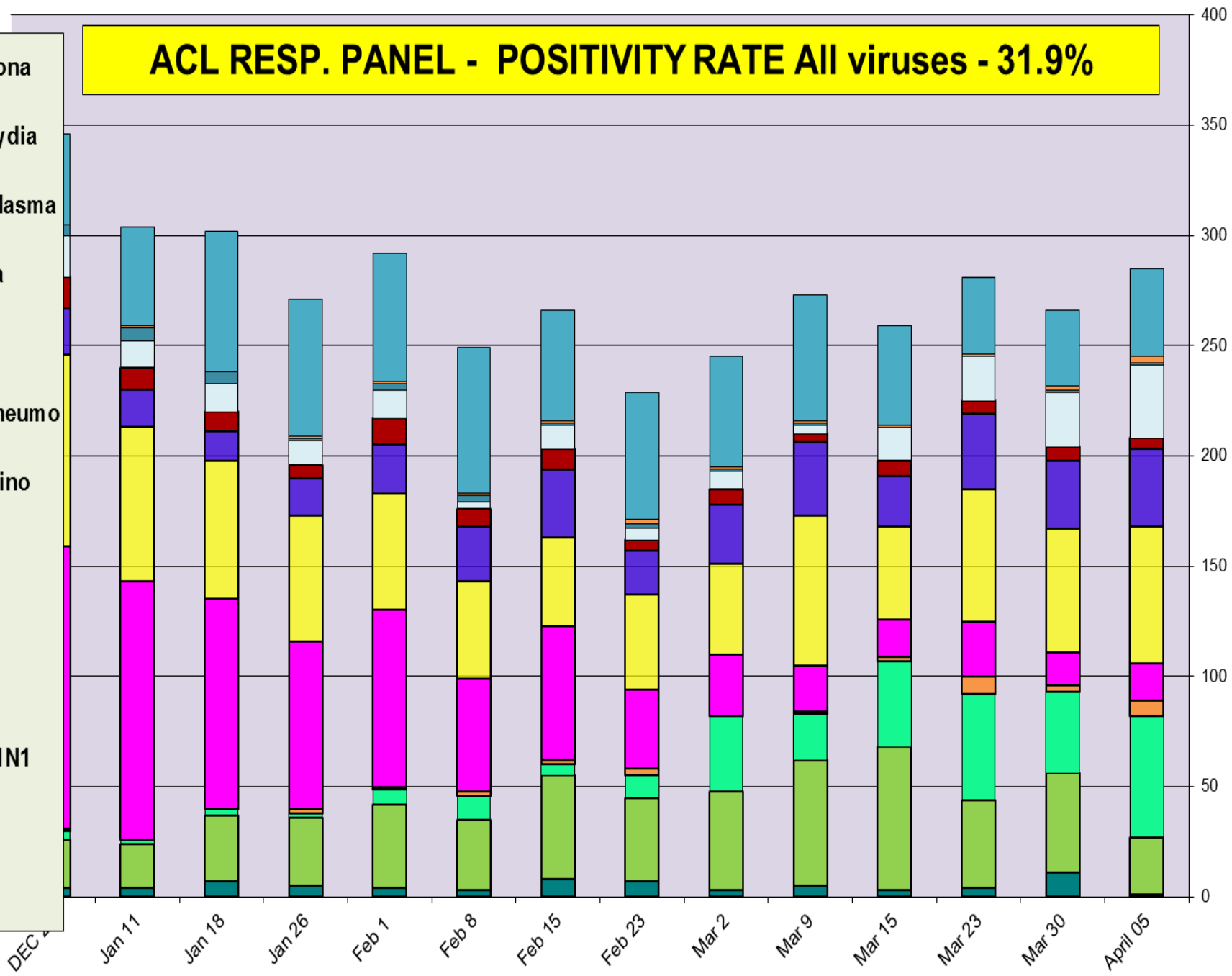
## Respiratory Pathogens Dec 28 2018 - Apr 6 2019

Week Beginning	InfA-H1	InfA-H3	2009 H1N1	Inf B	RSV	All Para	EV/ Rhino	Meta pneumo	Adeno	All Corona	Bocca	Myco plasma	Chla mydia	Total Pos	POS FLU	Total	ACL %FLU	US %FLU	IL/WI PCR	Sofia EIA
April 05	0	55	26	7	17	33	62	35	5	40	1	1	3	285	88	897	9.9	n/a	n/a	23.7
Mar 30	0	37	45	3	15	25	56	31	6	34	11	1	2	266	85	936	9.1	18.1	29.8	26.0
Mar 23	0	48	40	8	25	20	60	34	6	35	4	0	1	281	96	984	9.8	22.1	30.4	26.0
Mar 15	0	39	65	2	17	15	42	23	7	45	3	0	1	259	106	1076	9.9	26.0	29.5	29.4
Mar 9	0	21	57	1	21	4	68	33	4	57	5	1	1	273	79	1011	7.8	25.8	29.2	28.9
Mar 2	0	34	45	0	28	8	41	27	7	50	3	1	1	245	79	961	8.2	26.1	28.0	27.2
Feb 23	0	10	38	3	36	5	43	20	5	58	7	2	2	229	51	908	5.6	26.7	22.3	26.5
Feb 15	0	5	47	2	61	11	40	31	9	50	8	1	1	266	54	807	6.7	24.6	19.3	20.7
Feb 8	0	11	32	2	51	3	44	25	8	66	3	3	1	249	45	767	5.9	21.6	16.6	18.4
Feb 1	0	7	38	1	80	13	53	22	12	58	4	3	1	292	46	751	6.1	19.2	14.6	19.6
Jan 26	0	2	31	2	76	11	57	17	6	62	5	1	1	271	35	947	3.7	15.7	13.3	18.3
Jan 18	0	3	30	0	95	13	63	13	9	64	7	5	0	302	33	1064	3.1	12.7	11.6	16.6
Jan 11	0	2	20	0	117	12	70	17	10	45	4	6	1	304	22	1026	2.1	12.7	11.8	10.6
DEC 28	0	4	22	1	128	19	87	21	14	41	4	5	0	346	27	812	3.3	13.7	9.0	9.6

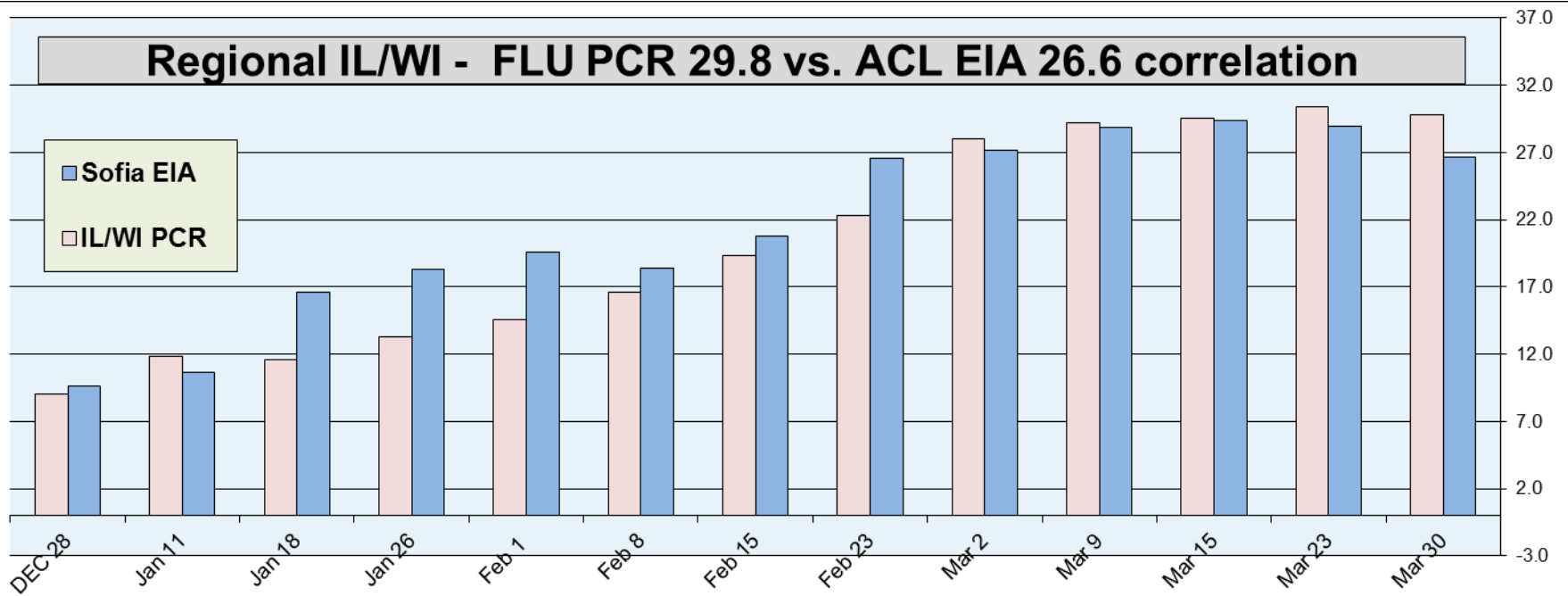
Flu PCR  
% Rate

# ACL RESP. PANEL - POSITIVITY RATE All viruses - 31.9%

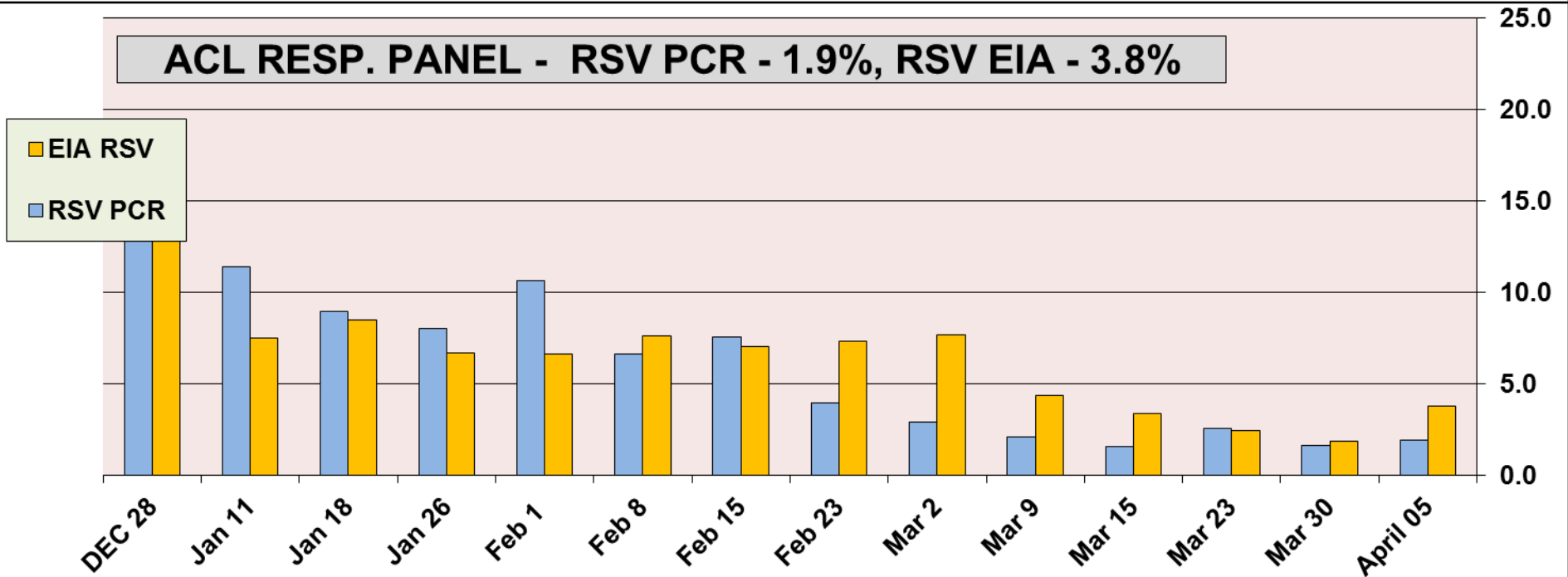
- All Corona
- Chla mydia
- Myco plasma
- All Para
- Adeno
- Meta pneumo
- EV / Rhino
- RSV
- Inf B
- InfA-H3
- 2009 H1N1
- InfA-H1
- Bocca



### Regional IL/WI - FLU PCR 29.8 vs. ACL EIA 26.6 correlation



### ACL RESP. PANEL - RSV PCR - 1.9%, RSV EIA - 3.8%



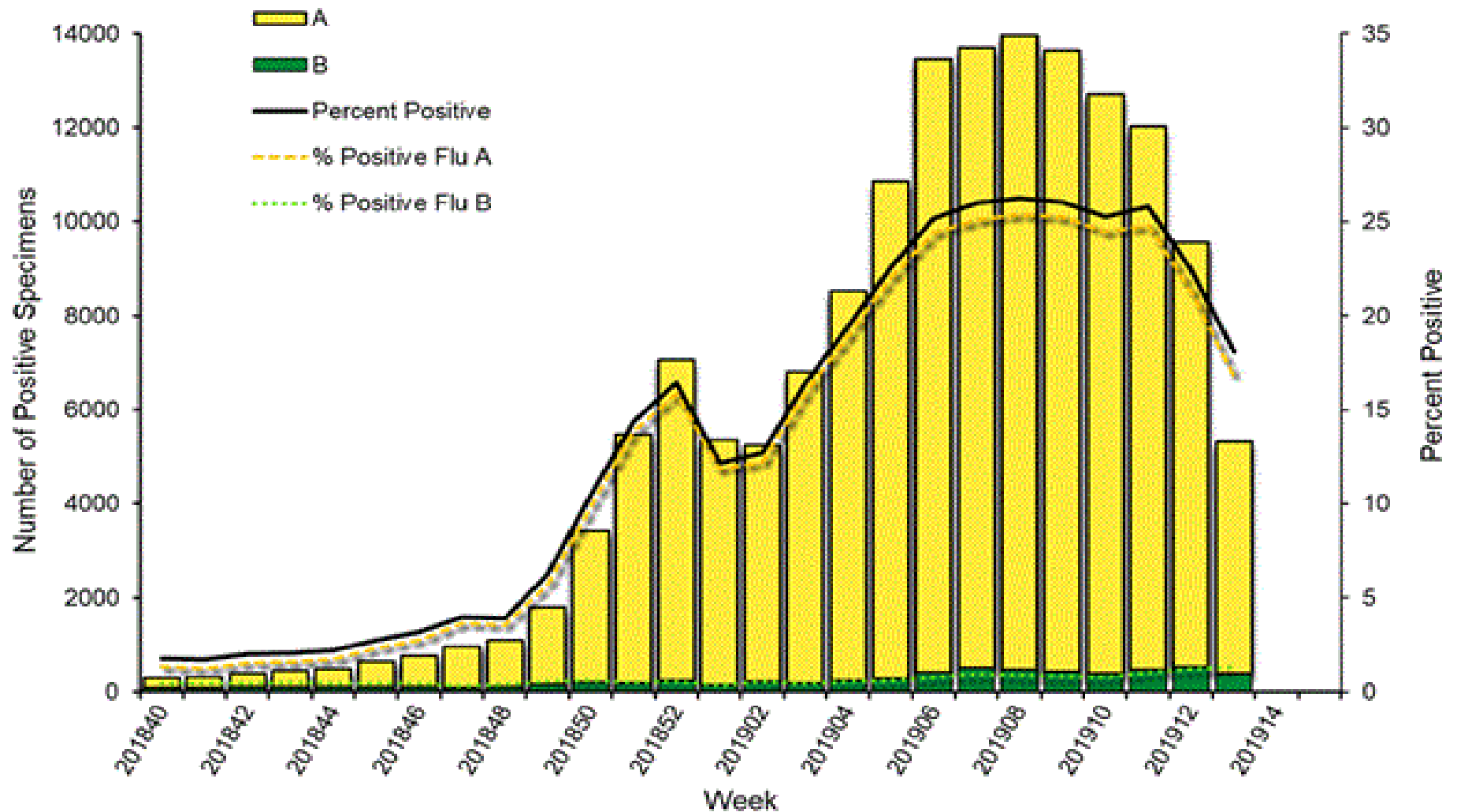
## Correlation between RPPNL (FLU PCR) and Sofia (FLUAG) - Accuracy 93.7%

In last two month, a 1914 samples were tested by both methods most of them negative, 129/245 samples were positive by EIA when confirmed by PCR. 116 negative EIA samples were tested positive by PCR method. *(ACL correlation data is compiled on samples collected within <48 h). Since positive rate is under-represented and provides correlation on very small fraction of positive samples – interpret clinical sensitivity with caution.*

02/02/19 to 03/30/2019				
FLUAG (Sofia) vs RPPNL (PCR) correlation				
		RPPNL		
		+	-	Total
FluAG	+	129	4	133
	-	116	1665	1781
		Total		1914
%				
52.7	Clinical Sensitivity			
99.8	Clinical Specificity			
97.0	Positive Predictive Value (PPV)			
93.5	Negative Predictive Value (NPV)			
93.7	Accuracy			

Mar 30, 2019 Positivity rate 18.2% - Flu A – 95% , Flu B – 5%

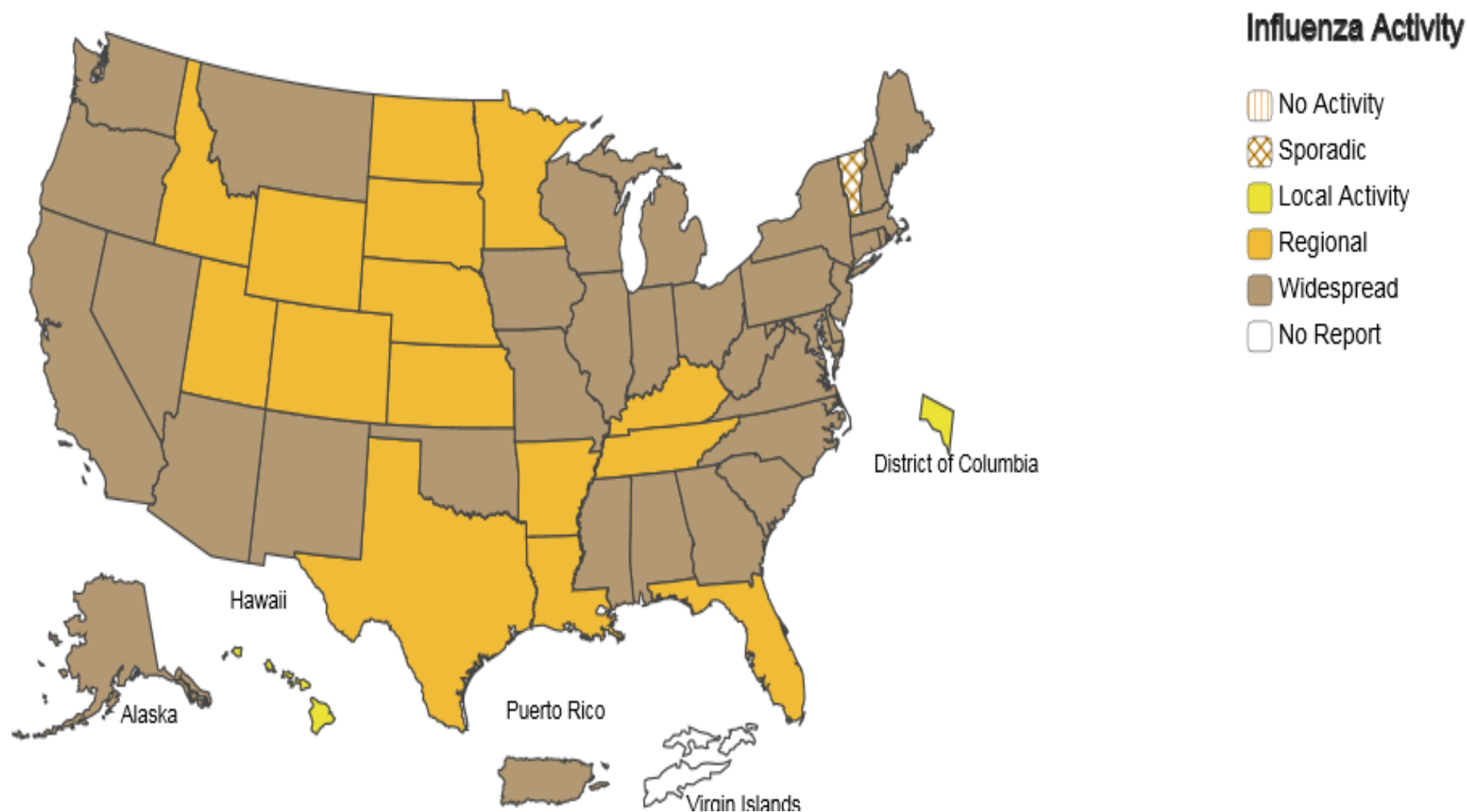
### Influenza Positive Tests Reported to CDC by U.S. Clinical Laboratories, National Summary, 2018-2019 Season



# A Weekly Influenza Surveillance Report Prepared by the Influenza Division

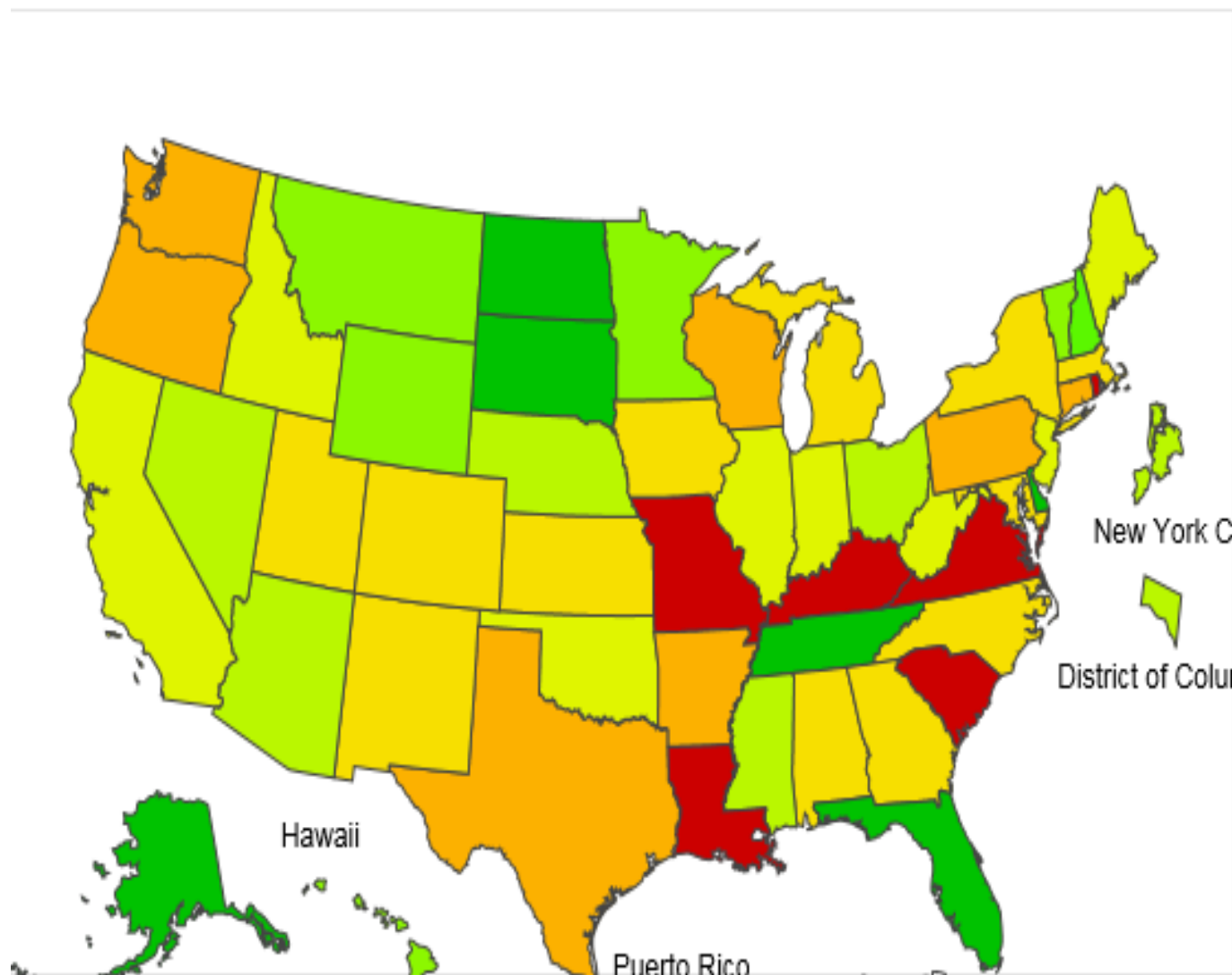
Weekly Influenza Activity Estimates Reported by State and Territorial Epidemiologists\*

Week Ending Mar 30, 2019 - Week 13

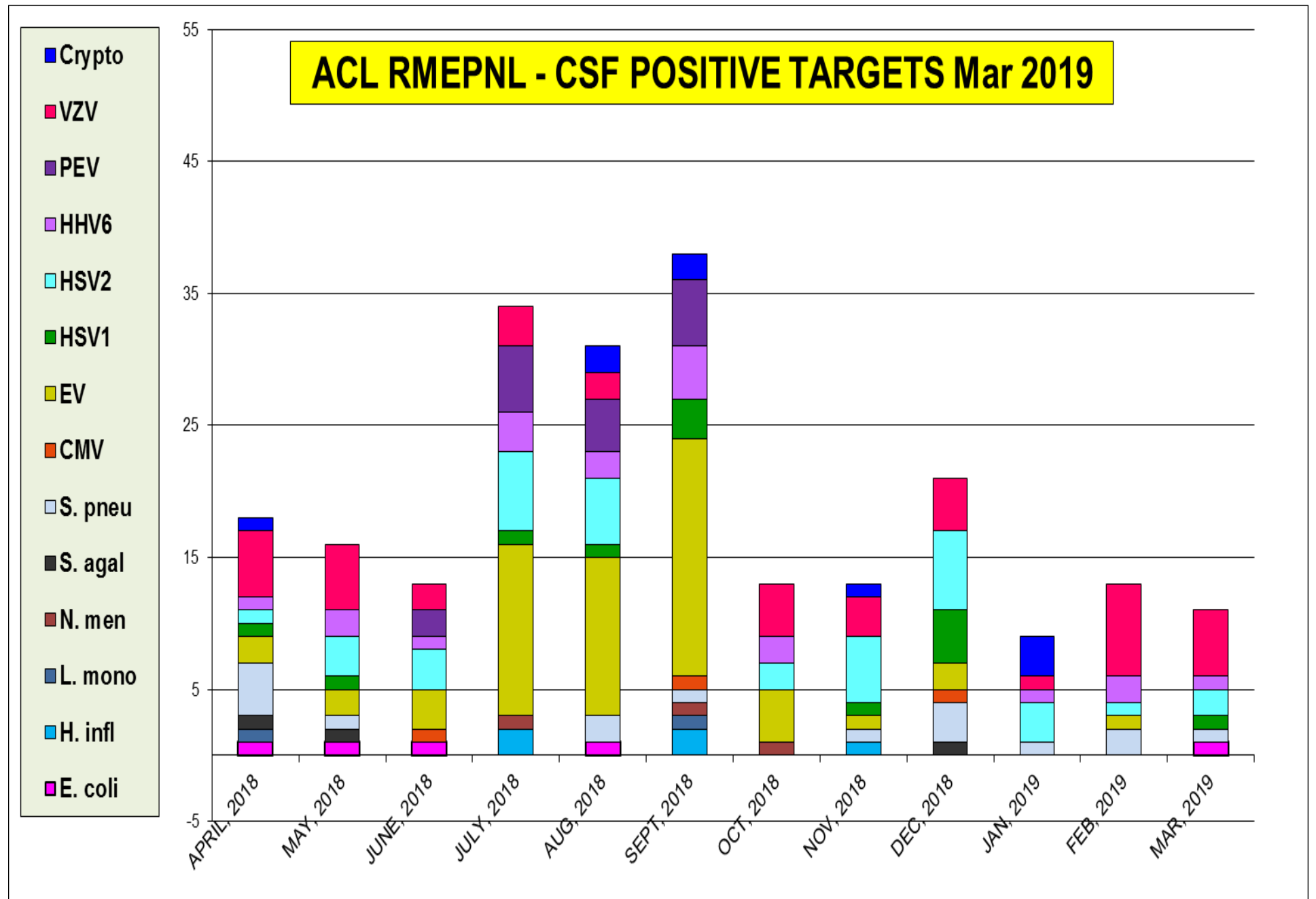


# 2018-19 Influenza Season Week 13 ending Mar 30, 2019

## ILI Activity



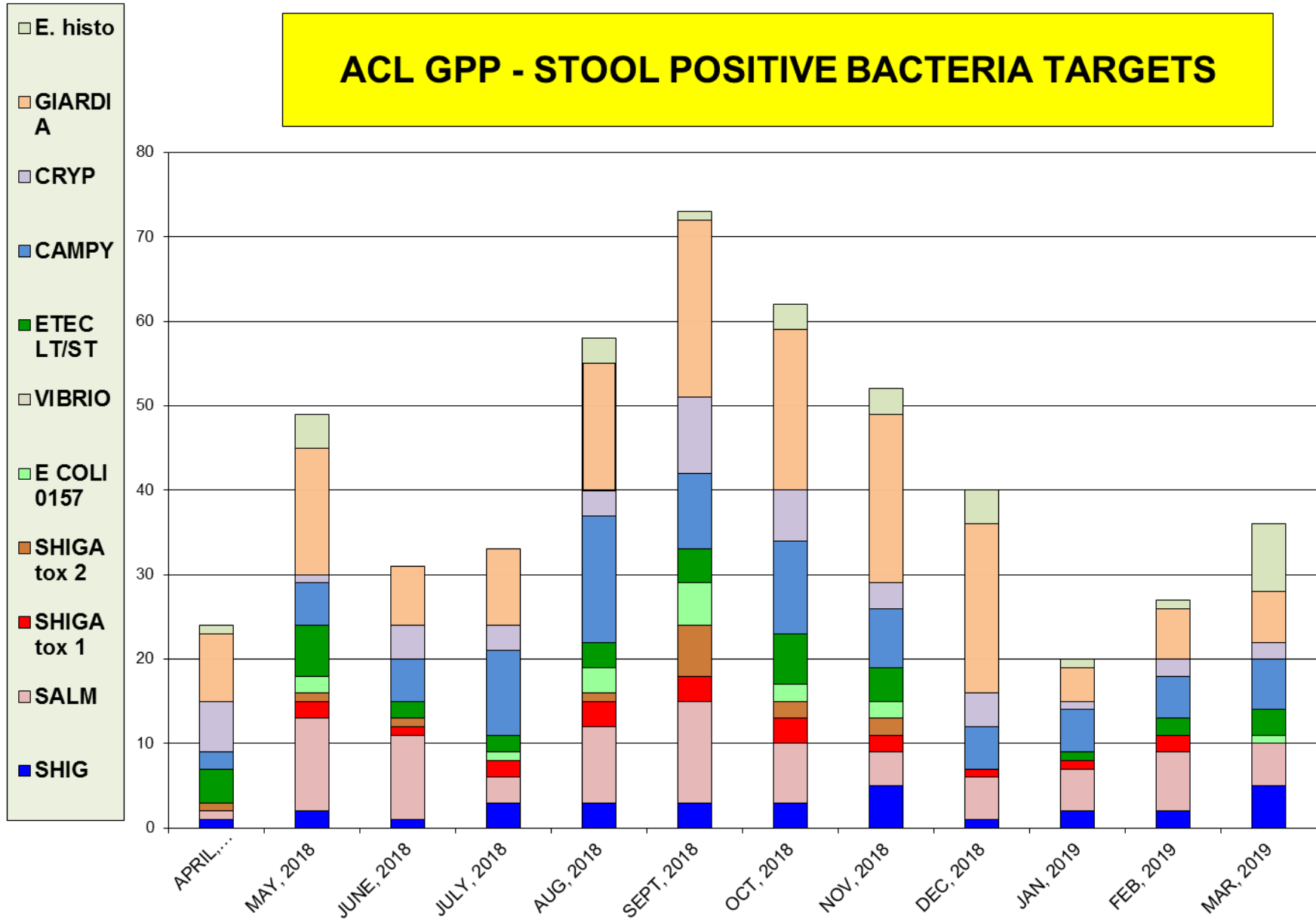
The most prevalent target was VZV– total pos. rate 6.5%



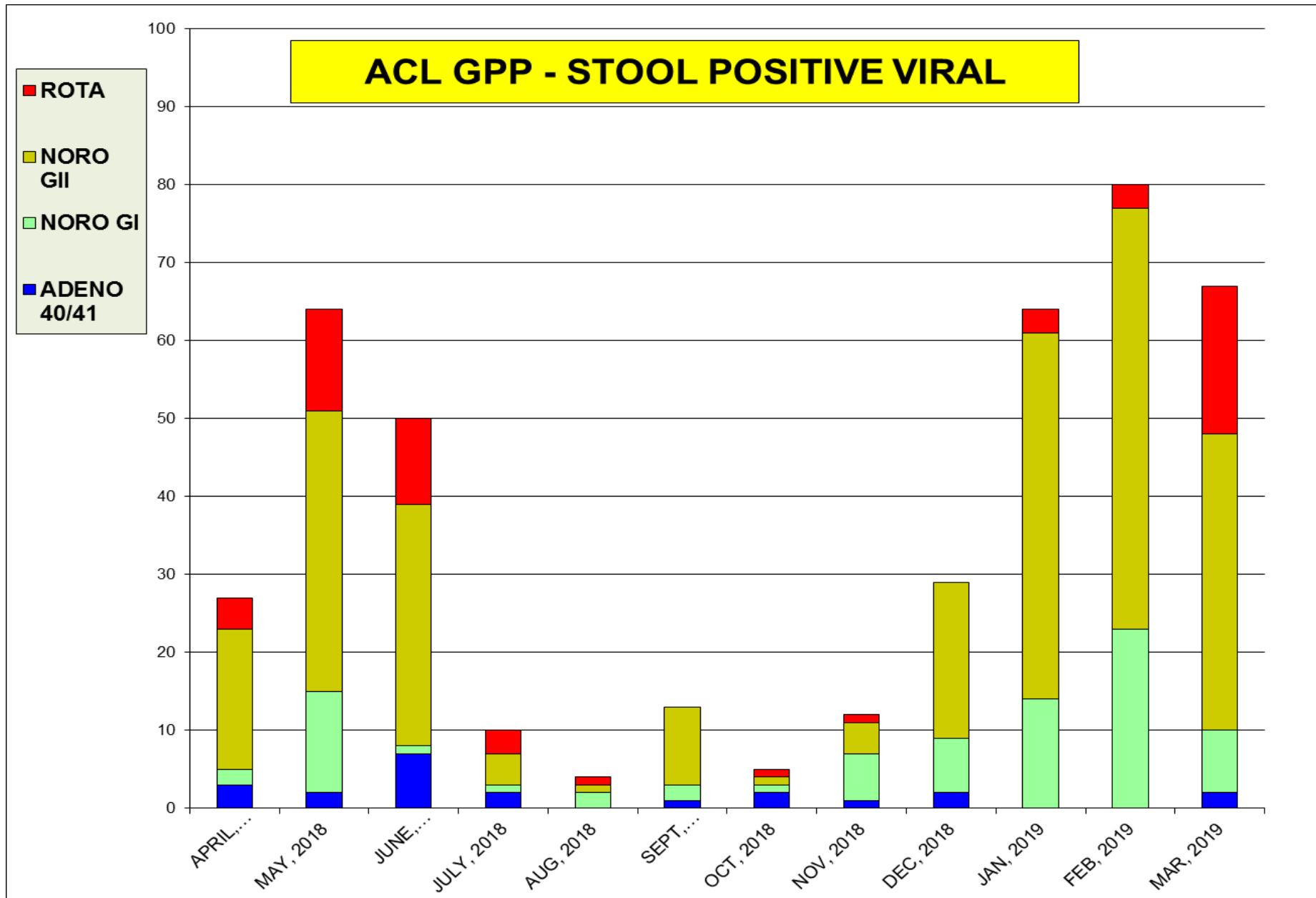


The most prevalent bacterial targets was **Campy** and **Giardia**

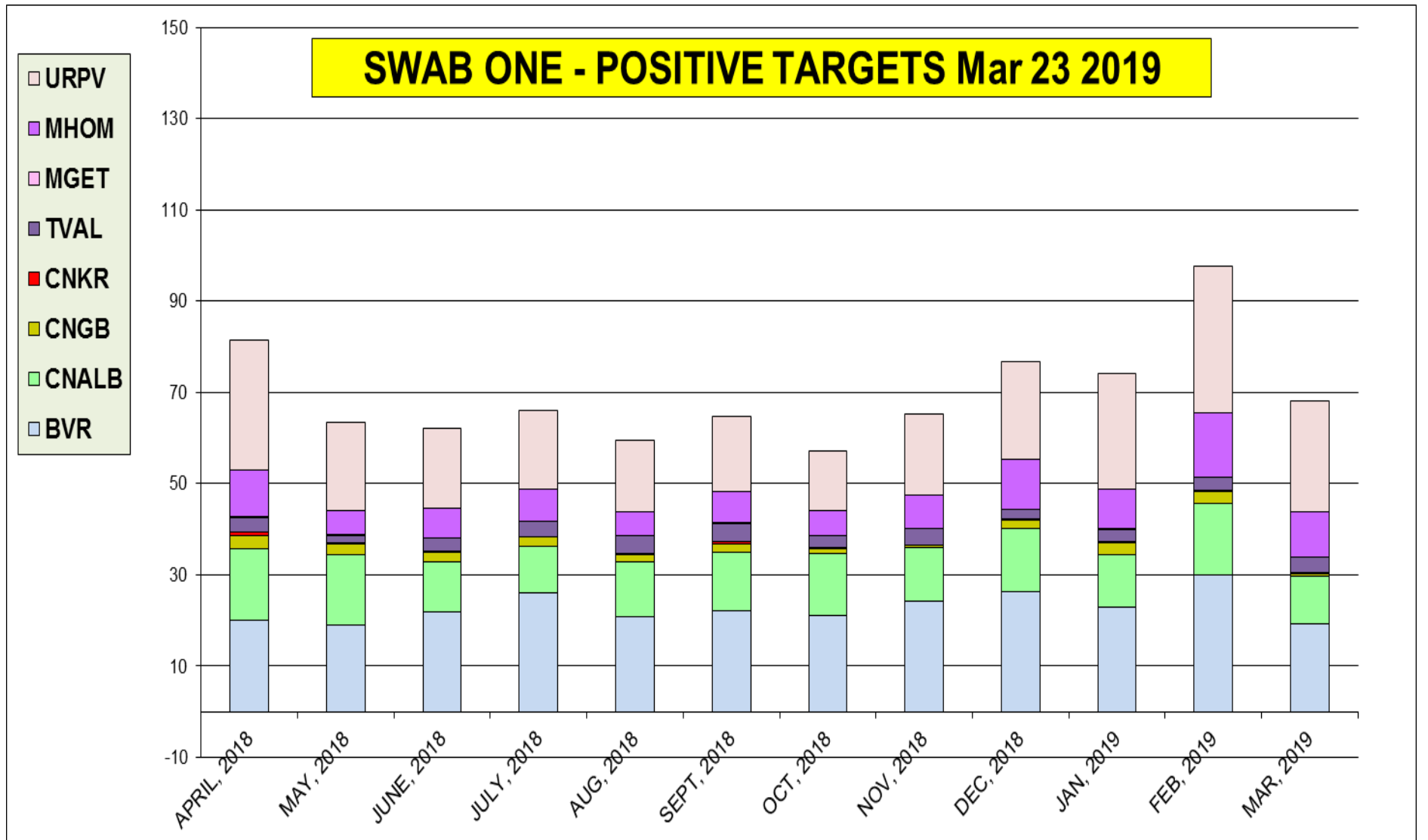
### ACL GPP - STOOL POSITIVE BACTERIA TARGETS



The most prevalent virus target was **Norovirus type I / II** - 8 % pos. rate



BV	C.ALB	C.GLB	C.KUR	T.VAG	M.GEN	M.HOM	U.PAV	Tot. pos.
5,178	5,178	5,178	5,178	5,178	5,178	5,178	5,178	5,178
<b>23.1</b>	<b>12.7</b>	<b>1.8</b>	<b>0.3</b>	<b>3.0</b>	<b>0.1</b>	<b>8.3</b>	<b>21.1</b>	<b>69.4</b>



## Neuraminidase Inhibitors Resistance in samples collected – as of Mar 30, 2019

Per CDC website	Oseltamivir		Peramivir		Zanamivir	
	Virus Samples tested (n)	Resistant Viruses, (%)	Virus Samples tested (n)	Resistant Viruses, (%)	Virus Samples tested (n)	Resistant Viruses, (%)
Influenza A (H1N1)pdm09	<b>898</b>	<b>0.3</b>	<b>898</b>	<b>0.3</b>	<b>898</b>	<b>0</b>
Influenza A (H3N2)	<b>634</b>	<b>0</b>	<b>634</b>	<b>0</b>	<b>634</b>	<b>0</b>
Influenza B	<b>213</b>	<b>0</b>	<b>213</b>	<b>0</b>	<b>213</b>	<b>0</b>

***There is 0.3% resistance detected.***