

## Respiratory Pathogens - Aug 31 2019

Week	InfA-H1	InfA-H3	2009 H1N1	Inf B	RSV	All Para	EV / Rhino	Meta pneumo	Adeno	All Corona	Bocca	Myc. pneumo	Chlam. pneumo.	Legionella pneumo.	BP / BPP	Total Pos	POS FLU	Total	ACL %FLU	US %FLU	IL/WI PCR	AAH PCR
Aug 31	0	1	0	0	1	4	39	1	3	1	0	4	1	1	1	56	1	775	0.1	n/a	n/a	1.3
Aug 23	0	1	0	0	1	8	42	1	2	6	3	2	5		0	71	1	393	0.3	4.4	0.8	1.9
Aug 16	0	0	1	0	1	5	31	4	5	1	1	0	1		1	50	1	655	0.2	2.3	0.7	2.0
Aug 09	0	1	0	0	0	5	29	1	5	2	0	0	1		1	44	1	629	0.2	2.1	0.2	2.0
Aug 2	0	1	0	0	2	10	46	4	6	0	1	0	0		0	70	1	758	0.1	2.4	0.9	2.0
July 26	0	2	0	0	1	6	36	10	1	1	2	3	0		2	62	2	504	0.4	2.4	0.4	3.7
July 19	0	2	0	0	0	18	38	9	8	2	3	0	1		3	81	2	491	0.4	2.3	1.0	5.6
July 12	0	2	0	0	1	12	39	6	7	0	2	2	0		4	71	2	567	0.4	2.1	0.3	3.2
July 5	0	0	0	0	0	19	41	9	5	4	1	4	0		2	83	3	387	0.8	2.5	1.4	3.0
Jun 29	0	1	1	1	1	26	54	17	9	0	1	1	0		2	112	3	694	0.4	2.1	1.5	3.1
Jun 21	0	0	2	0	0	25	61	23	10	4	3	1	0		1	129	2	718	0.3	1.9	0.9	2.2
Jun 14	0	1	0	0	2	33	59	26	5	0	6	0	0		1	132	1	754	0.1	2.4	1.6	2.6
Jun 07	0	2	1	0	3	33	62	24	5	2	3	1	0		1	136	1	630	0.2	2.8	1.7	2.4
Jun 01	0	0	1	0	4	37	60	31	7	4	5	0	0		0	149	1	743	0.1	3.1	2.1	2.6
May 24	0	2	3	3	2	50	100	35	9	7	5	0	3		0	219	8	1045	0.8	3.1	3.2	3.7
May 17	0	8	4	1	5	35	62	36	8	7	6	0	0		1	172	13	1268	1.0	3.1	4.7	5.6
May 10	1	2	2	1	7	49	53	32	5	8	6	0	1		1	167	6	1028	0.6	3.1	6.5	7.2

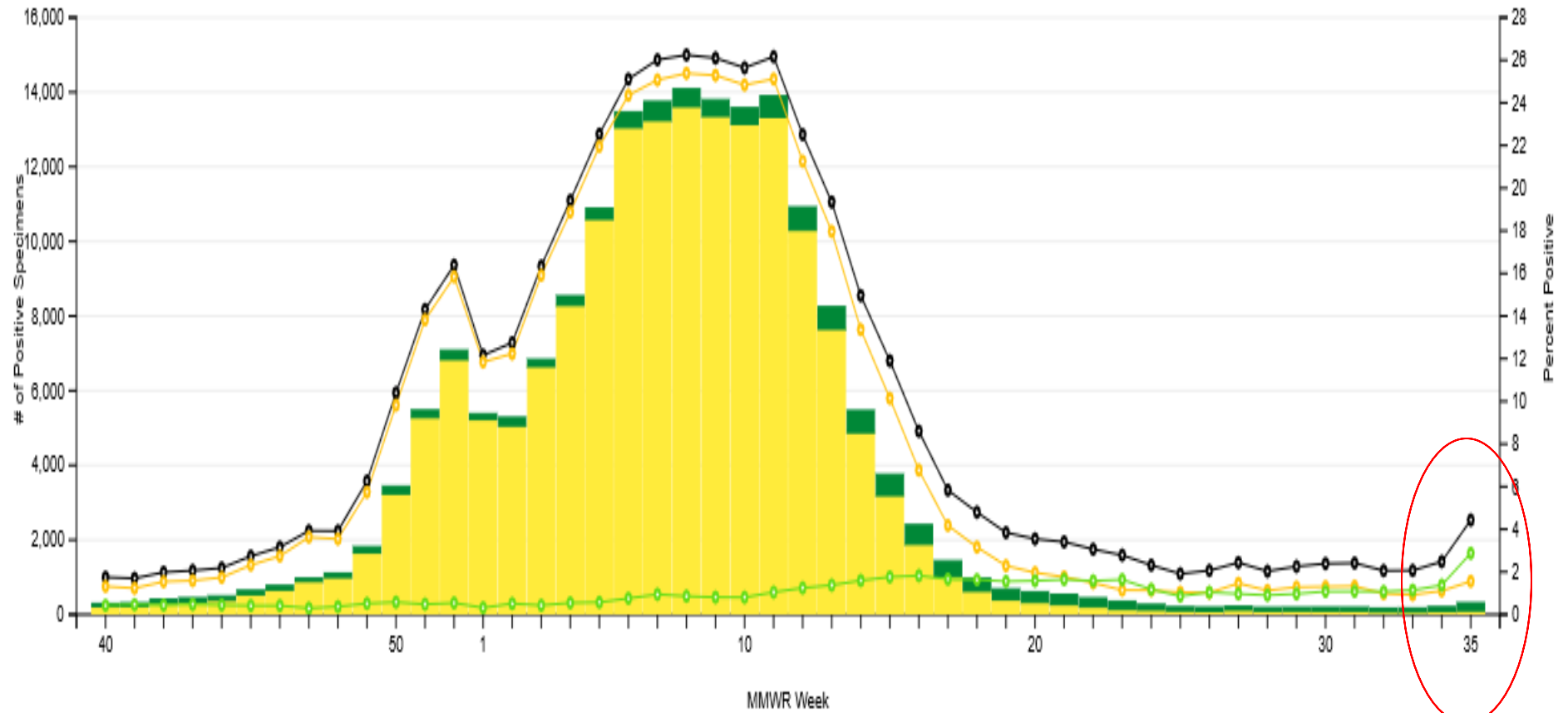
Flu PCR  
% Rate

# FLUVIEW



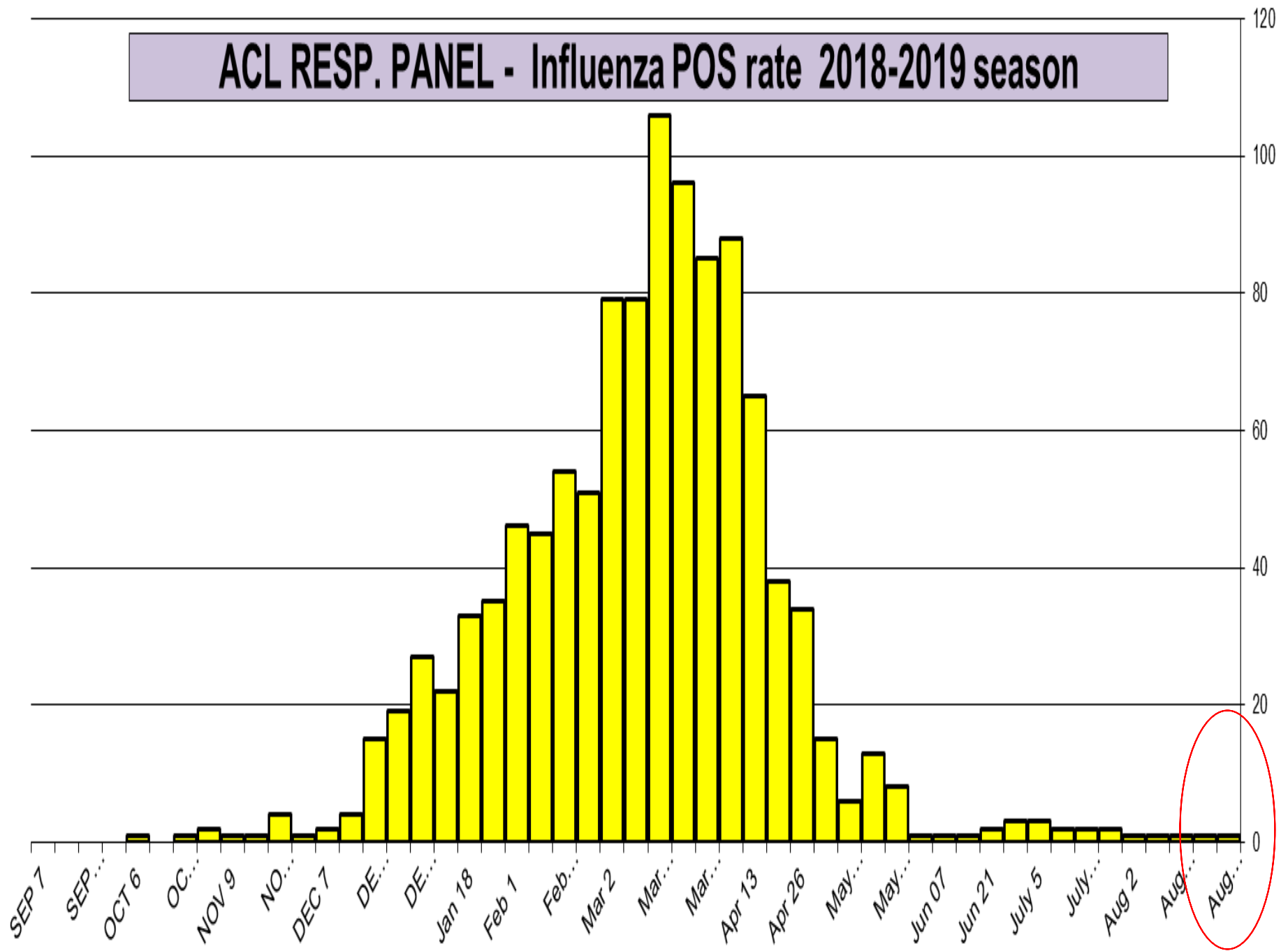
Influenza Positive Tests Reported to CDC by Clinical Laboratories, National Summary,  
2018-19 Season, week ending Aug 31, 2019

Reported by: U.S. WHO/NREVSS Collaborating Laboratories and ILINet



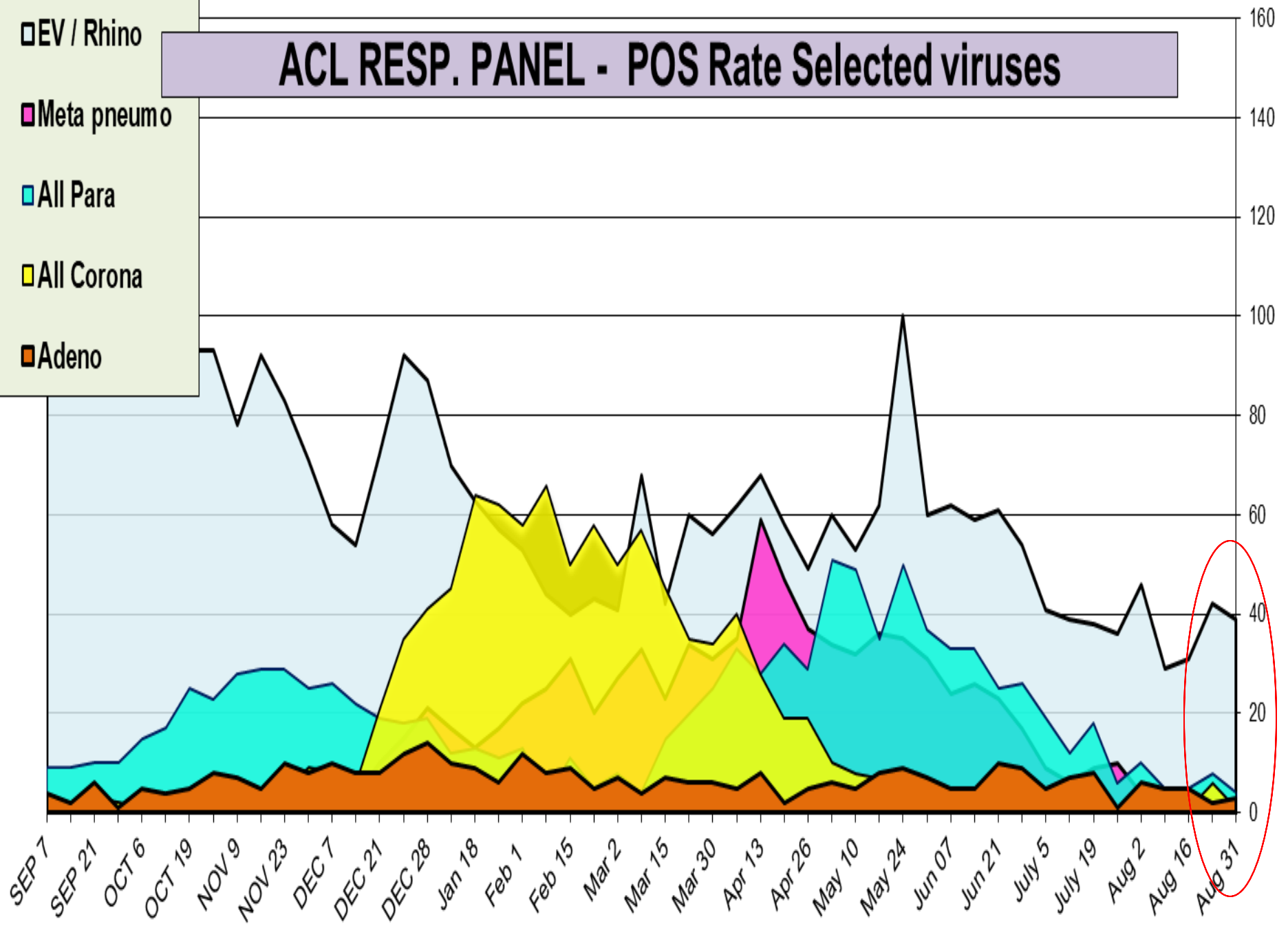
- Check All
- Percent Positive
- Percent Positive for Influenza A
- Percent Positive for Influenza B
- Total A
- Total B

# ACL RESP. PANEL - Influenza POS rate 2018-2019 season

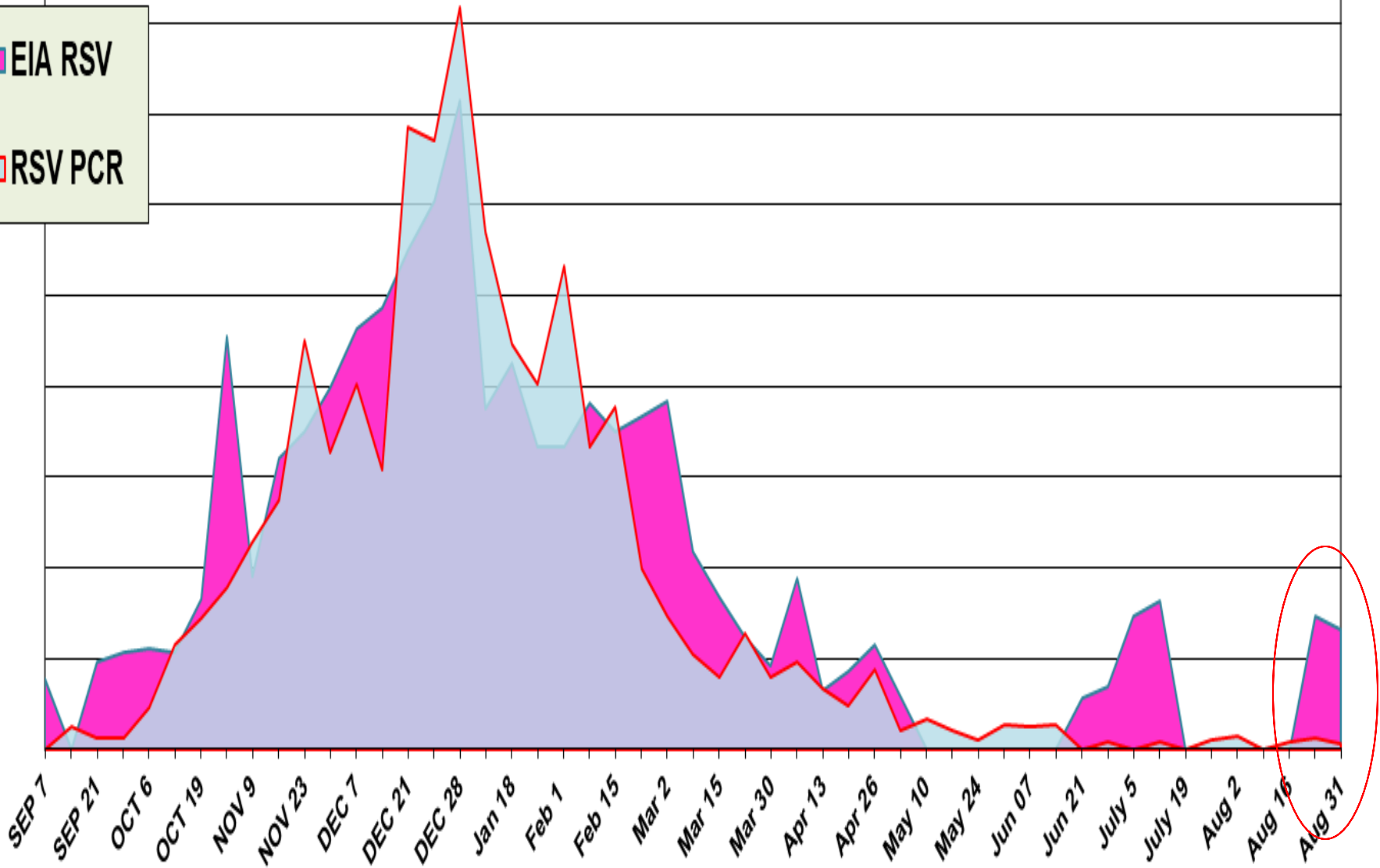
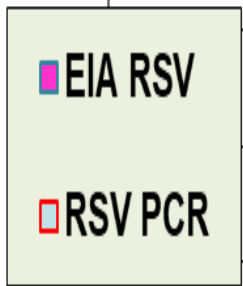


# ACL RESP. PANEL - POS Rate Selected viruses

- EV / Rhino
- Meta pneumo
- All Para
- All Corona
- Adeno



# ACL RESP. PANEL - RSV PCR - 0.2%, RSV EIA - 0.0%



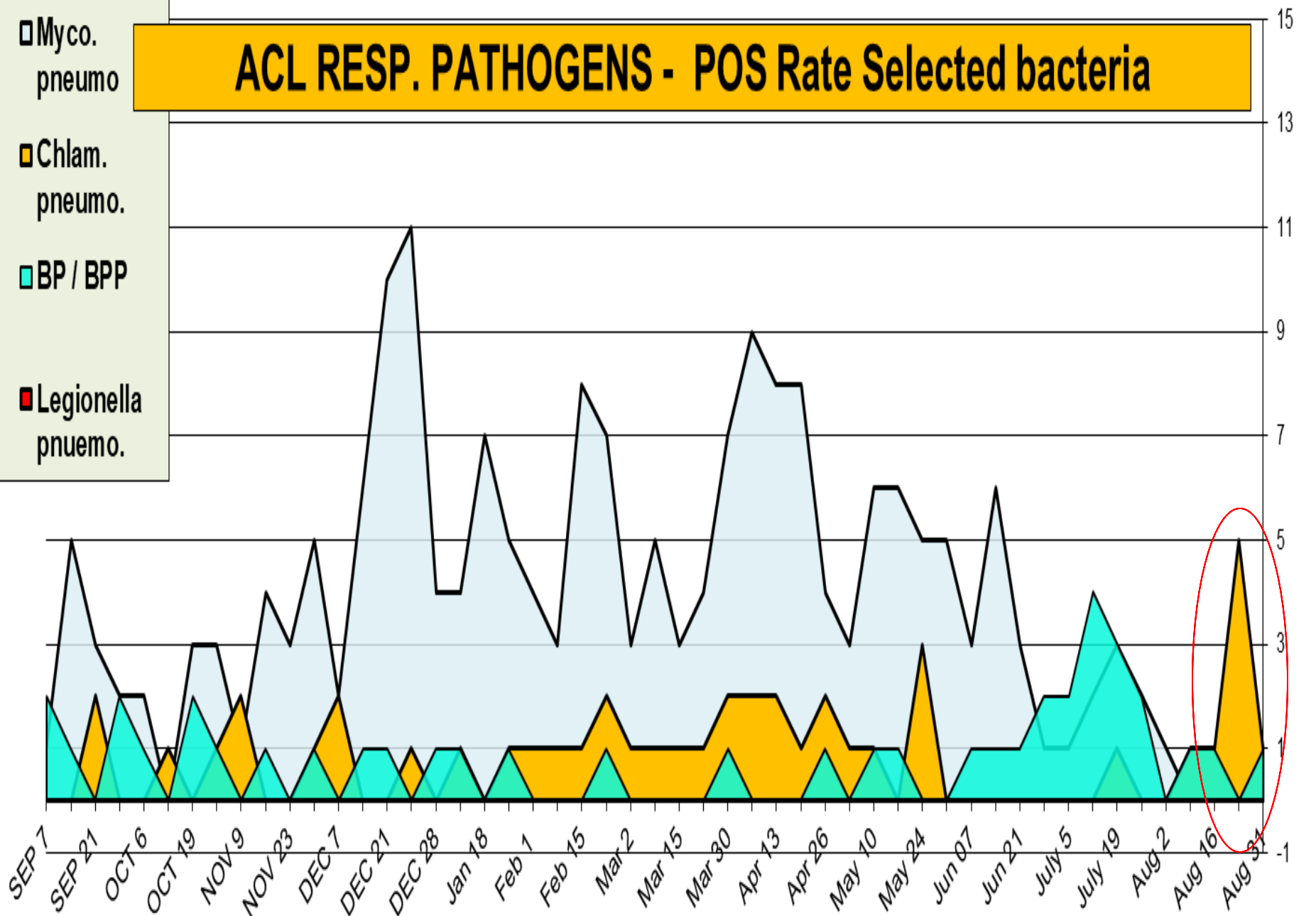
# ACL RESP. PATHOGENS - POS Rate Selected bacteria

Myco. pneumo

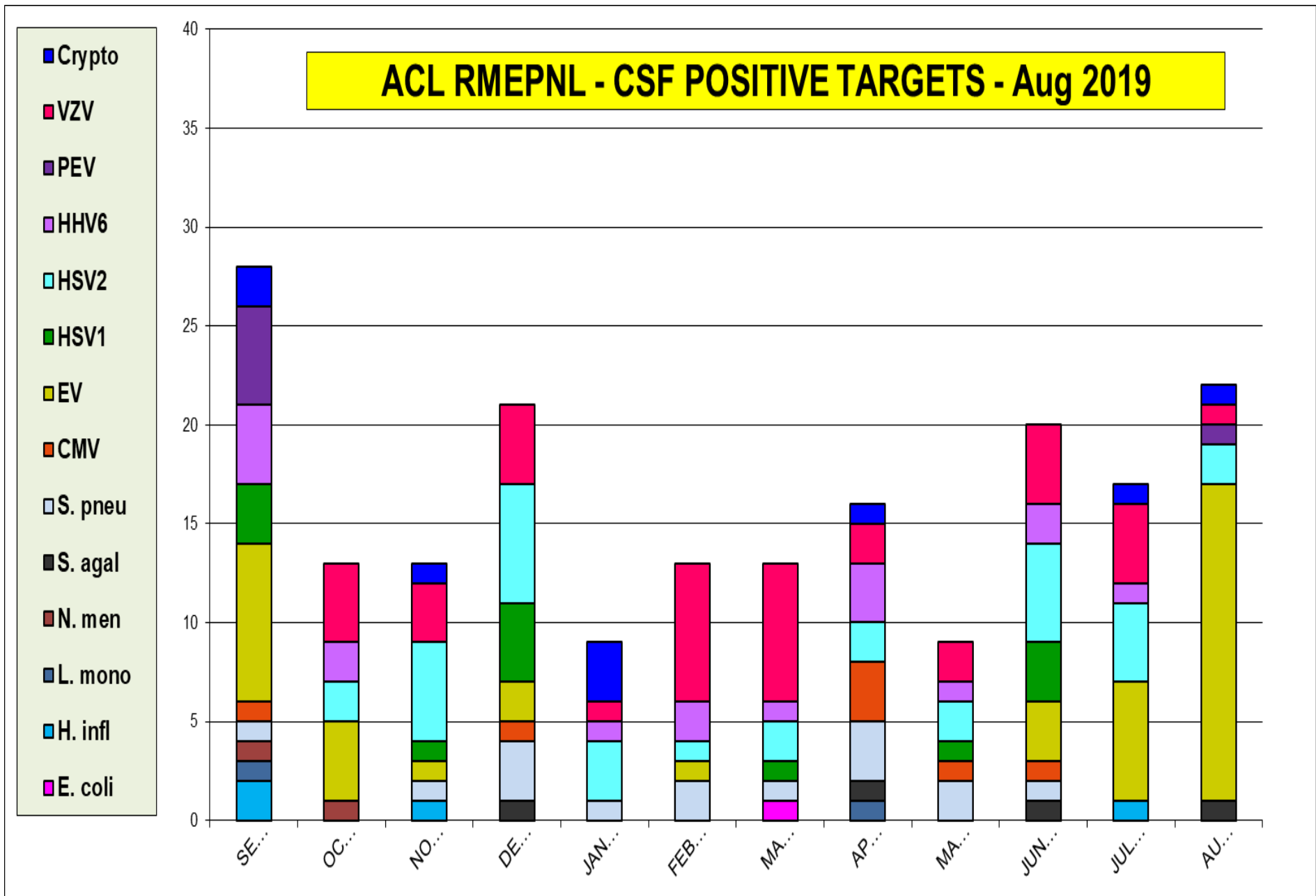
Chlam. pneumo.

BP / BPP

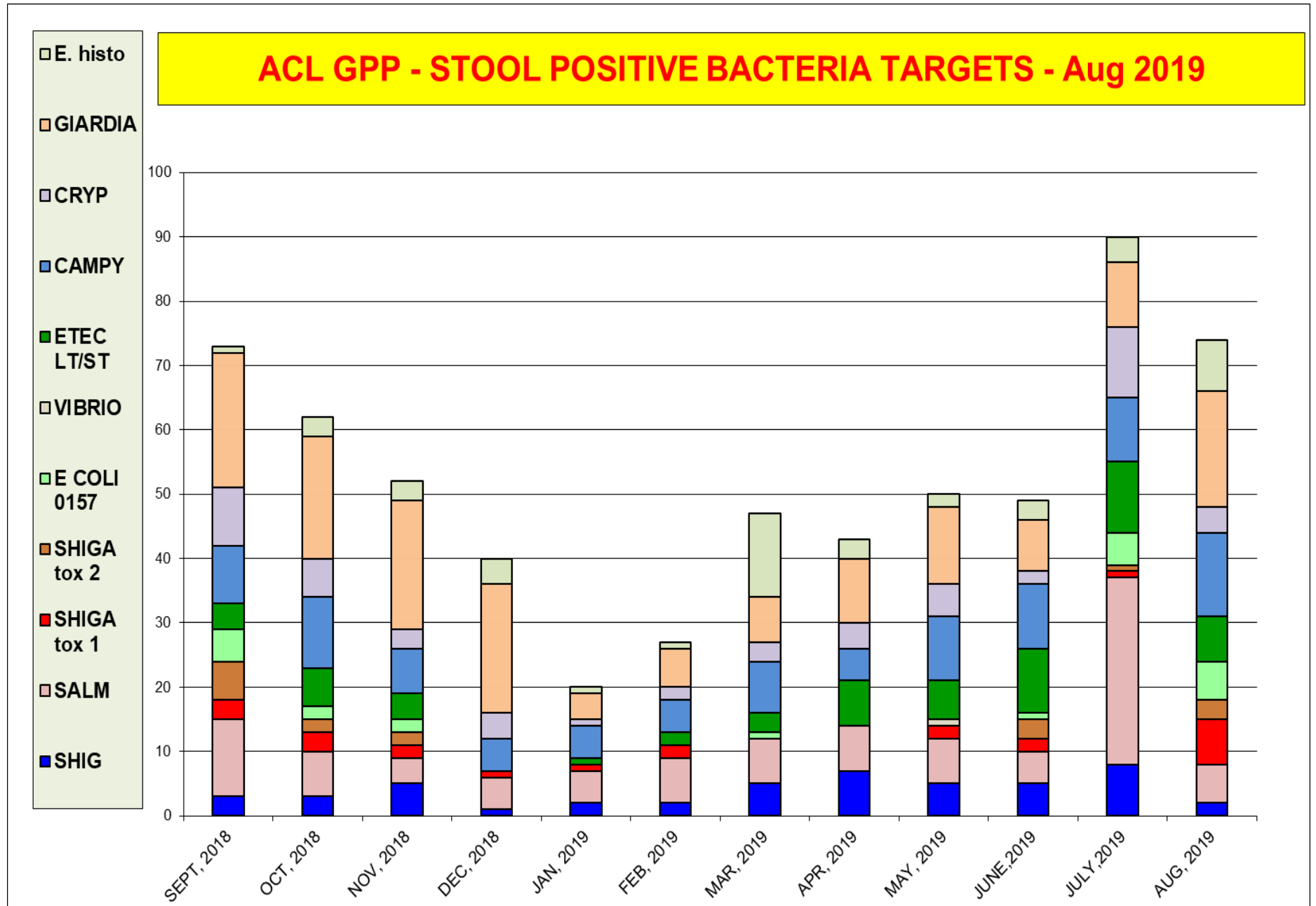
Legionella pneumo.



The most prevalent targets is Enterovirus (pos rate 11%)



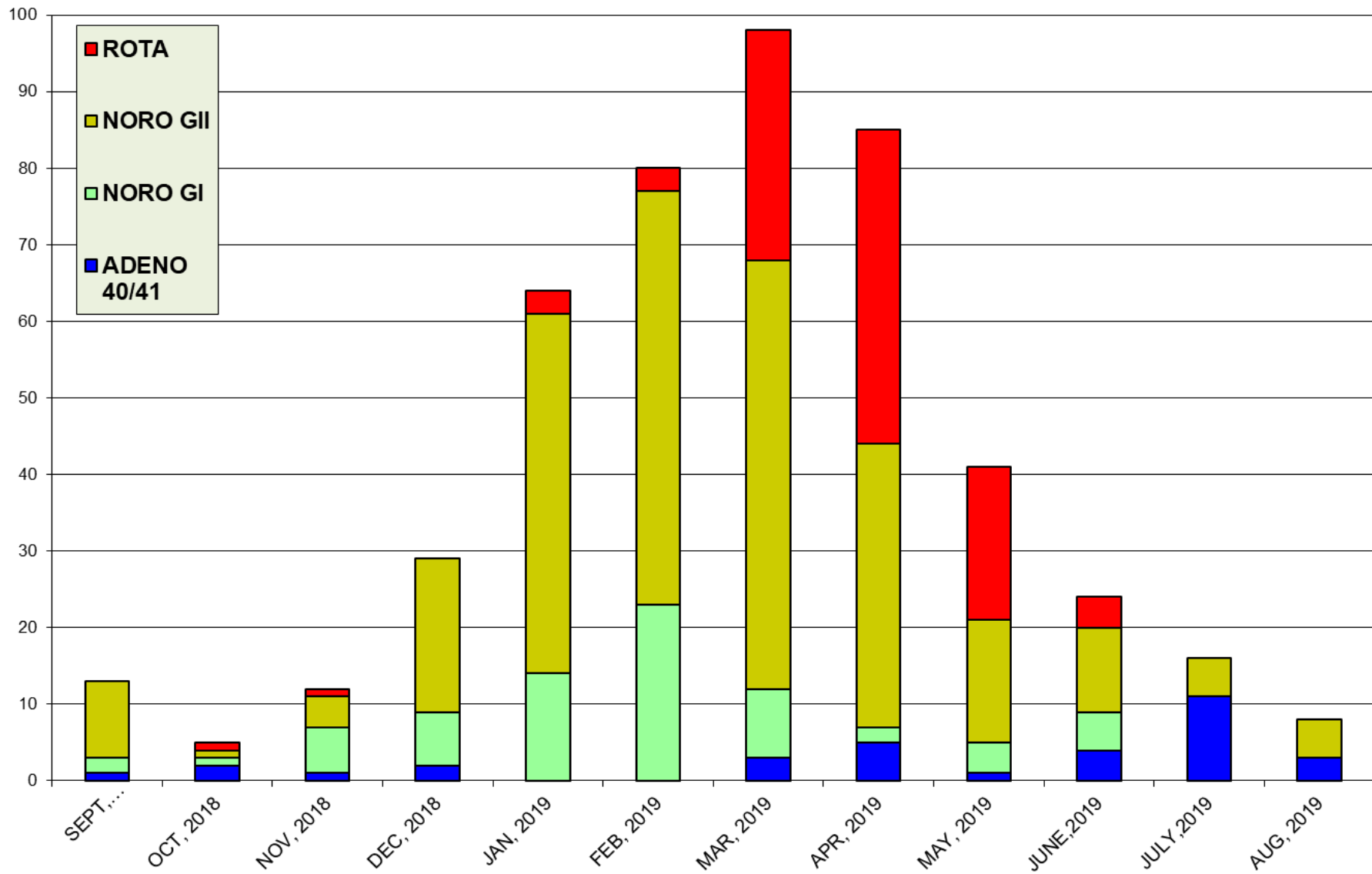
The most prevalent bacterial targets is **Giardia**





The most prevalent virus target is **Adenovirus**

### ACL GPP - STOOL POSITIVE VIRAL TARGETS - Aug 2019



BV	C.ALB	C.GLB	C.KUR	T.VAG	M.GEN	M.HOM	U.PAV	Tot. pos.
4,980	4,980	4,980	4,980	4,980	4,980	4,980	4,980	4,980
<b>24.1</b>	<b>15.5</b>	<b>2.2</b>	<b>0.3</b>	<b>3.3</b>	<b>0.6</b>	<b>10.0</b>	<b>25.8</b>	<b>81.9</b>

