

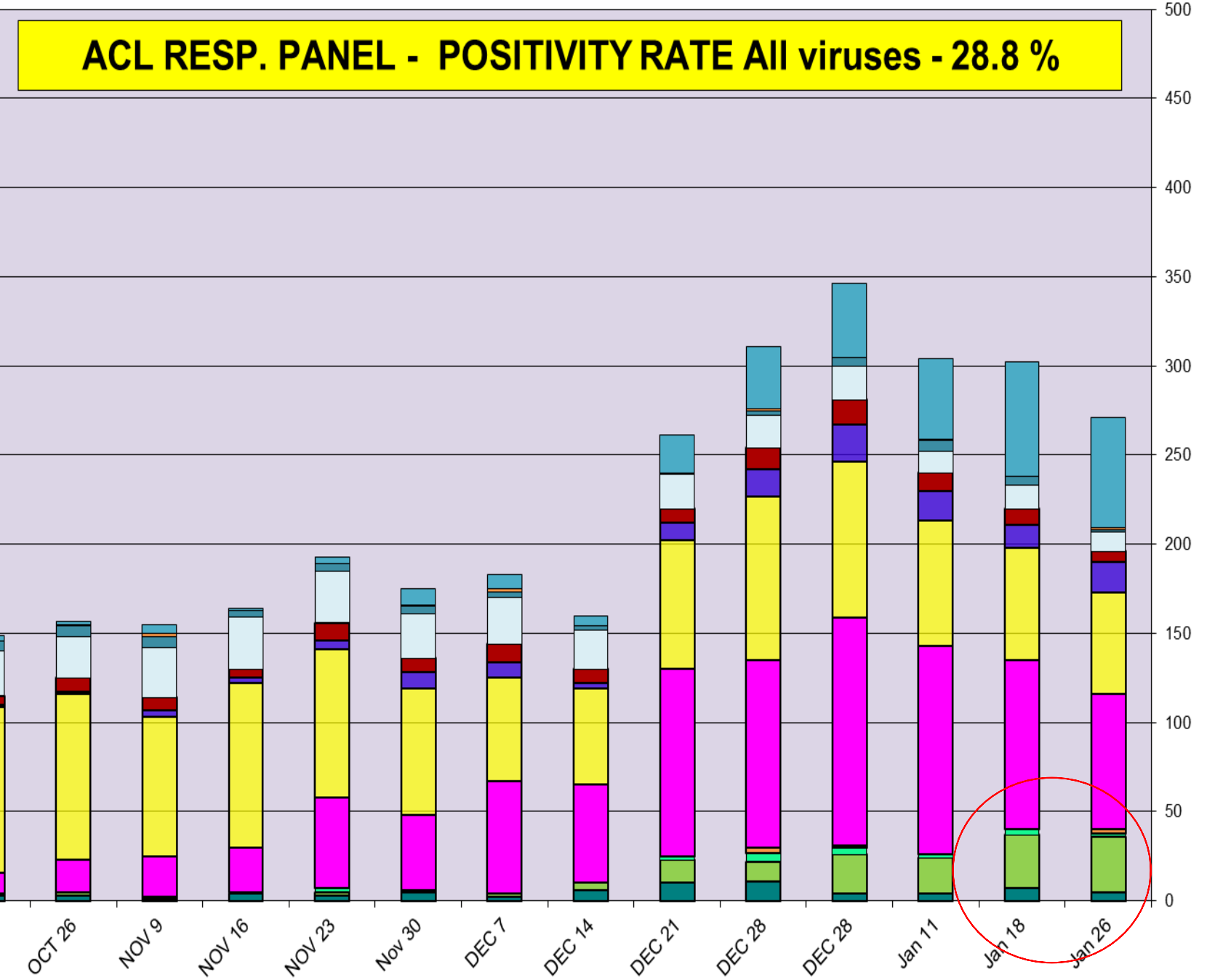
## Respiratory Pathogens Data Oct 19 2018 - Jan 25 2019

Week Beginning	InfA-H1	InfA-H3	2009 H1N1	Inf B	RSV	All Para	EV/ Rhino	Meta pneumo	Adeno	All Corona	Bocca	Mycoplasma	Chlamydia	Total Pos	POS FLU	Total	ACL %FLU	US %FLU	IL/WI PCR	Sofia EIA
Jan 26	0	2	31	2	76	11	57	17	6	62	5	1	1	271	35	947	3.7	n/a	n/a	18.3
Jan 18	0	3	30	0	95	13	63	13	9	64	7	5	0	302	33	1064	3.1	19.2	12.6	16.6
Jan 11	0	2	20	0	117	12	70	17	10	45	4	6	1	304	22	1026	2.1	12.7	11.6	11.6
DEC 28	0	4	22	1	128	19	87	21	14	41	4	5	0	346	27	812	3.3	12.7	11.8	11.8
DEC 28	0	5	11	3	105	18	92	15	12	35	11	3	1	311	19	783	2.4	13.7	9.0	3.7
DEC 21	0	2	13	0	105	19	72	10	8	21	10	1	0	261	15	766	2.0	15.6	6.9	7.2
DEC 14	0	0	4	0	55	22	54	3	8	6	6	2	0	160	4	891	0.4	11.0	4.1	5.1
DEC 7	0	0	2	0	63	26	58	9	10	8	2	3	2	183	2	785	0.3	3.6	1.8	3.6
Nov 30	0	0	1	0	42	25	71	9	8	9	5	4	1	175	1	641	0.6	4.2	1.9	1.9
NOV 23	0	2	2	0	51	29	83	5	10	4	3	4	0	193	4	566	0.7	2.4	1.6	2.7
NOV 16	1	0	0	0	25	29	92	3	5	1	4	4	0	164	1	457	0.2	1.7	1.5	0.7
NOV 9	0	0	1	0	23	28	78	4	7	5	1	6	2	155	1	458	0.2	1.2	0.9	1.5
OCT 26	0	0	2	0	18	23	93	1	8	2	3	6	1	157	2	506	0.4	0.9	0.7	1.6
OCT 19	0	0	1	0	12	25	93	1	5	3	3	6	0	149	1	415	0.2	0.8	0.5	1.3

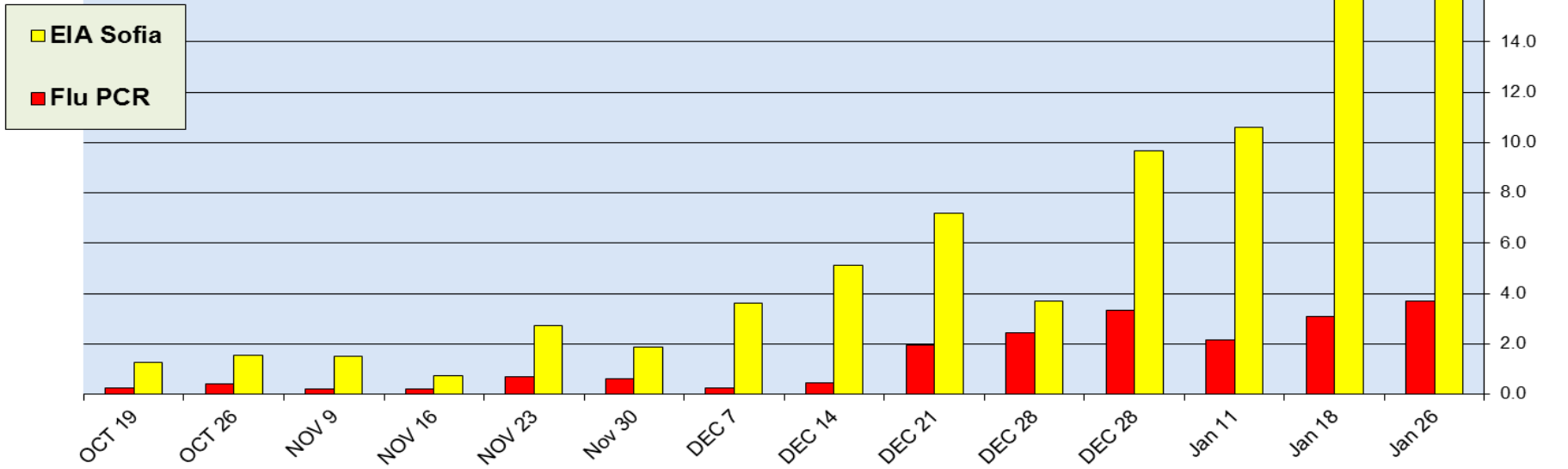
Flu PCR % Rate

# ACL RESP. PANEL - POSITIVITY RATE All viruses - 28.8 %

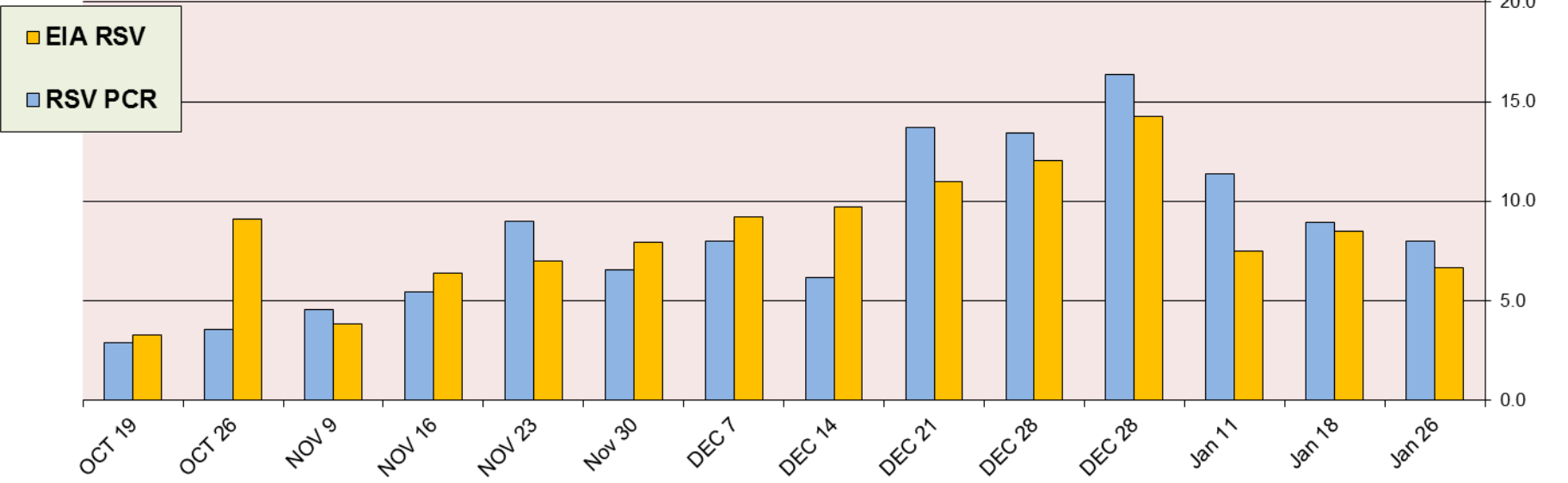
- All Corona
- Chla mydia
- Myco plasma
- All Para
- Adeno
- Meta pneumo
- EV / Rhino
- RSV
- Inf B
- InfA-H3
- 2009 H1N1
- InfA-H1
- Bocca



**ACL RESP. PANEL - Flu PCR - 3.7%, Flu EIA - 18.3%**



**ACL RESP. PANEL - RSV PCR - 8.0%, RSV EIA - 6.7%**



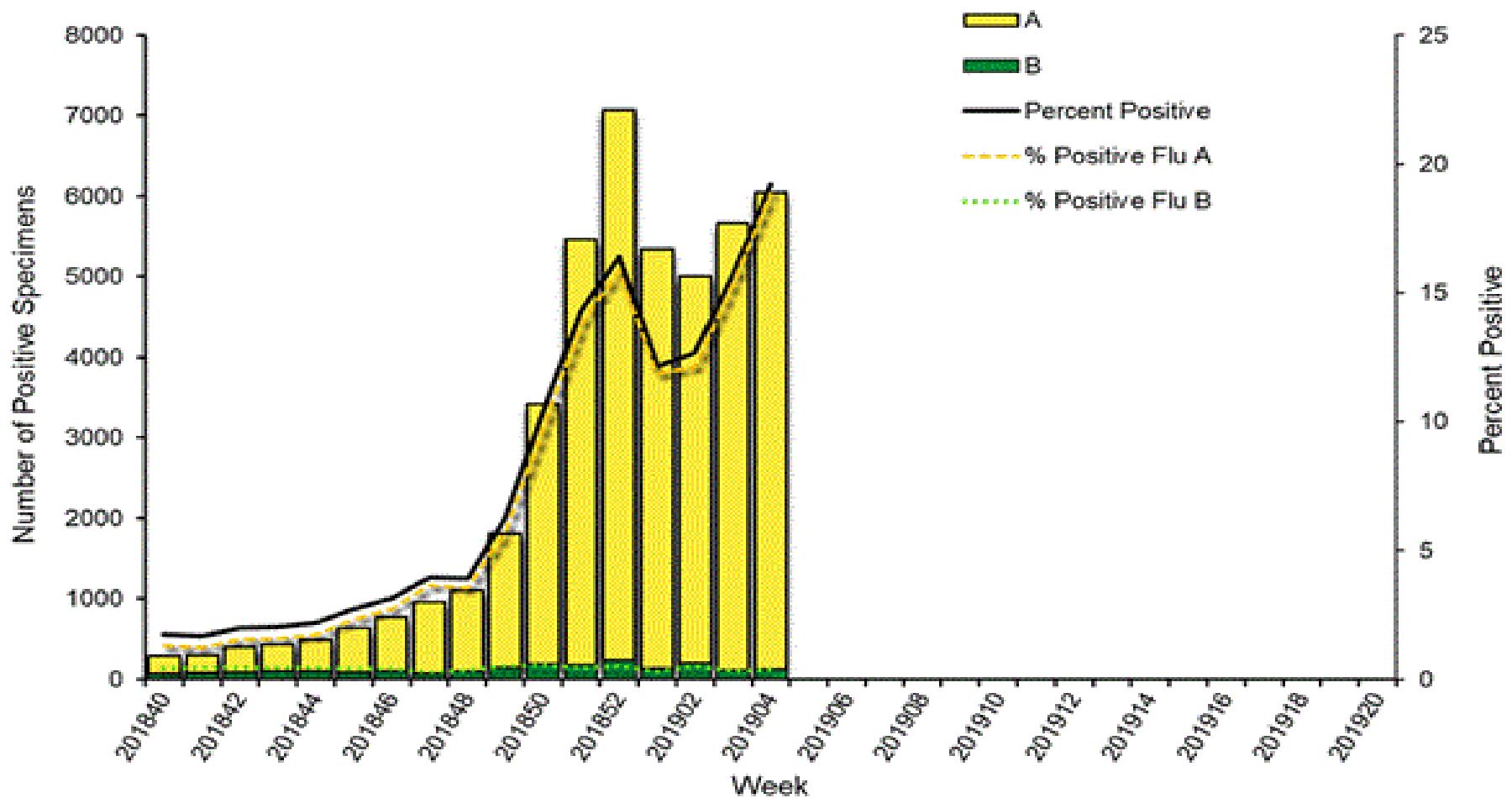
## Correlation between RPPNL (FLU PCR) and Sofia (FLUAG) - Accuracy 97.6%

In the last two months 1332 samples were tested by both methods most of them negative, 24/55 samples were positive by EIA when confirmed by PCR. 24 negative EIA samples were tested positive by PCR method. (ACL correlation data is compiled on samples collected within <48 h)

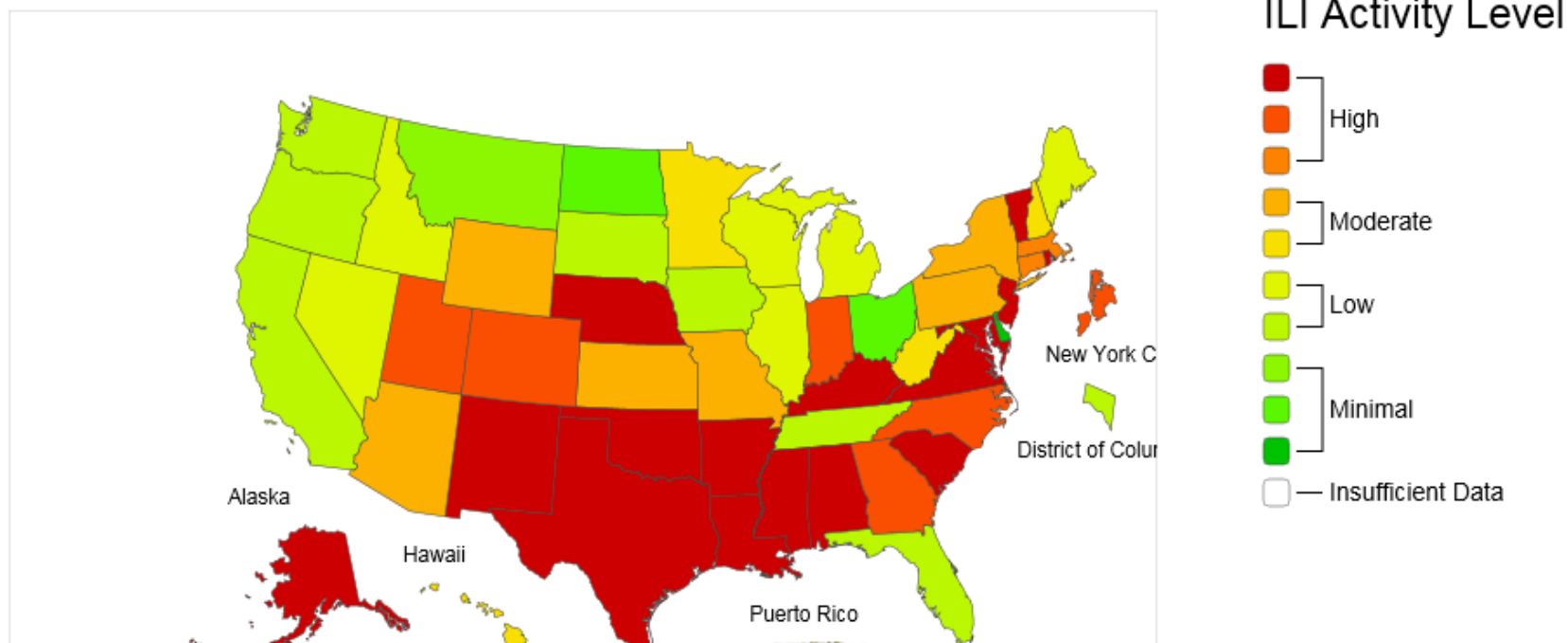
Dec 1 2018 to Jan 25 2019				
FLUAG (Sofia) vs RPPNL (PCR) correlation				
		RPPNL		
		+	-	Total
FluAG	+	31	10	41
	-	24	1332	1356
		Total		1397
%				
56.4	Clinical Sensitivity			
99.3	Clinical Specificity			
75.6	Positive Predictive Value (PPV)			
98.2	Negative Predictive Value (NPV)			
97.6	Accuracy			

Jan 26, 2019 **Positivity rate 19.2%** - Flu A – 98% , Flu B – 2%

### Influenza Positive Tests Reported to CDC by U.S. Clinical Laboratories, National Summary, 2018-2019 Season



## 2018-19 Influenza Season Week 4 ending Jan 26, 2019



\*This map uses the proportion of outpatient visits to healthcare providers for influenza-like illness to measure the ILI activity level within a state. It does not, however, measure the extent of geographic spread of flu within a state. Therefore, outbreaks occurring in a single city could cause the state to display high activity levels.

\*Data collected in ILINet may disproportionately represent certain populations within a state, and therefore may not accurately depict the full picture of influenza activity for the whole state.

\*Data displayed in this map are based on data collected in ILINet, whereas the State and Territorial flu activity map are based on reports from state and territorial epidemiologists. The data presented in this map is preliminary and may change as more data is received.

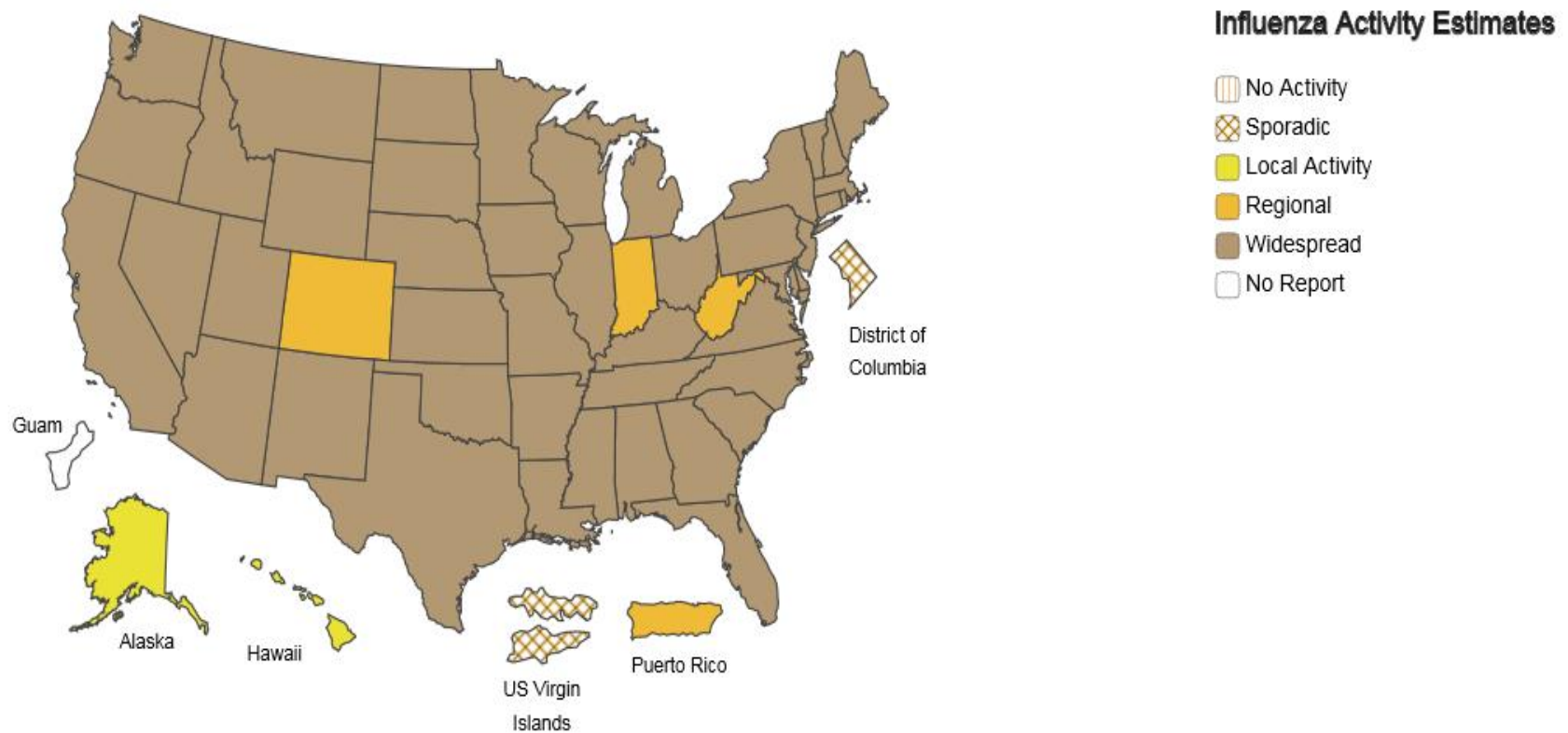
\*Differences in the data presented by CDC and state health departments likely represent differing levels of data completeness with data presented by the state likely being the more complete.

\*For the data download you can use Activity Level for the number and Activity Level Label for the text description.

## A Weekly Influenza Surveillance Report Prepared by the Influenza Division

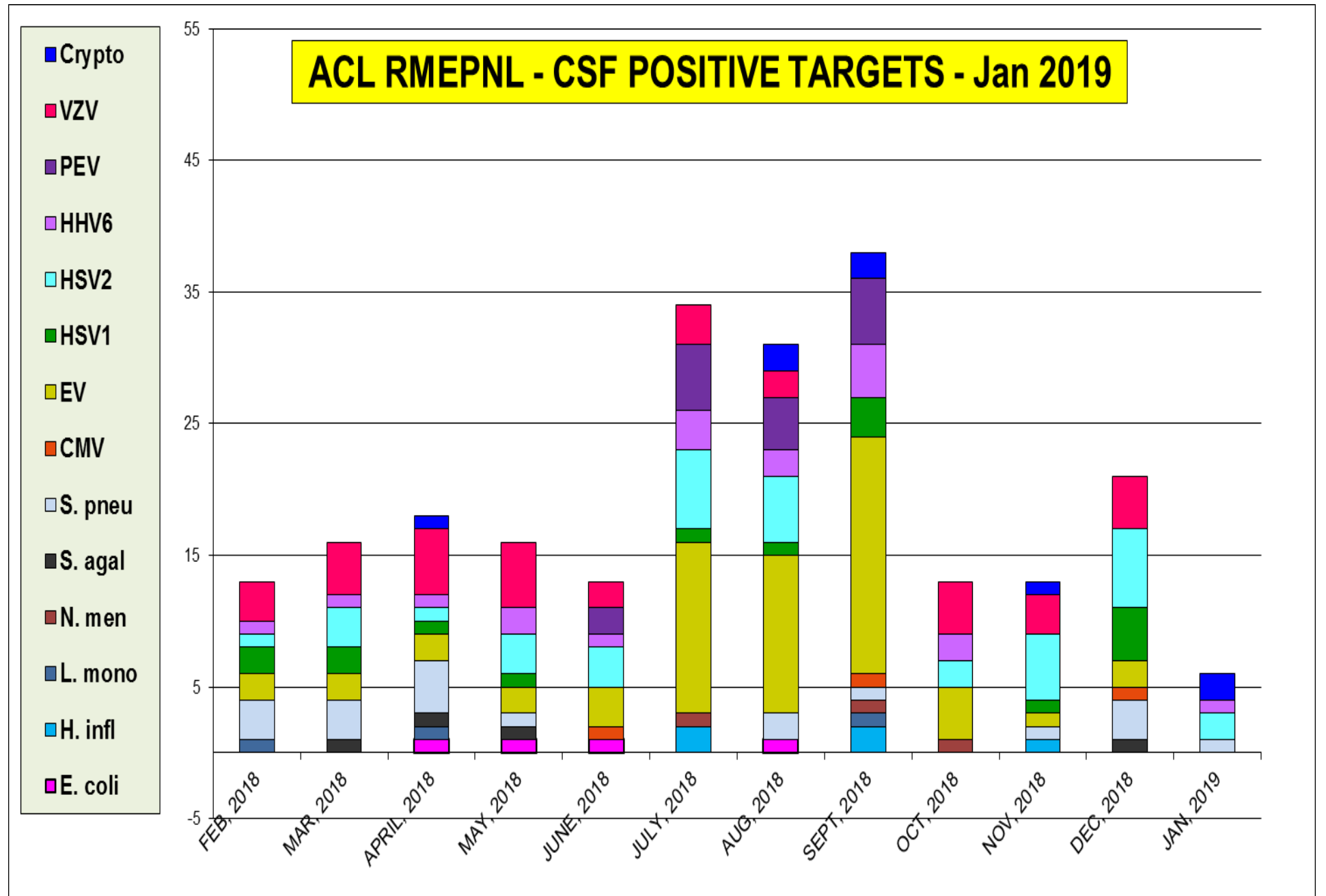
Weekly Influenza Activity Estimates Reported by State and Territorial Epidemiologists\*

Week Ending Jan 26, 2019 - Week 4



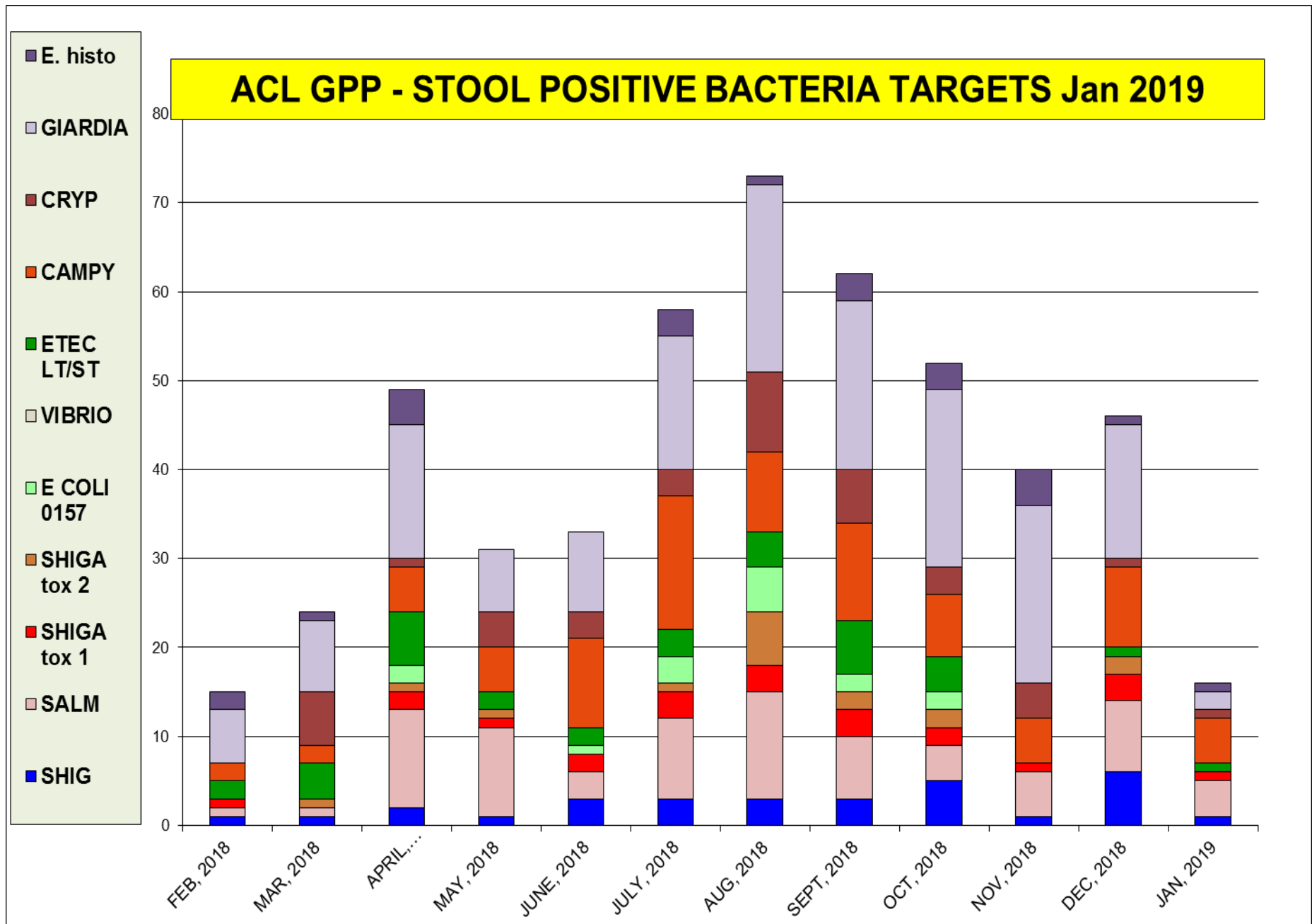
\*This map indicates geographic spread and does not measure the severity of influenza activity.

The most prevalent target were HSV 2 and Crypto – total pos. rate 4%

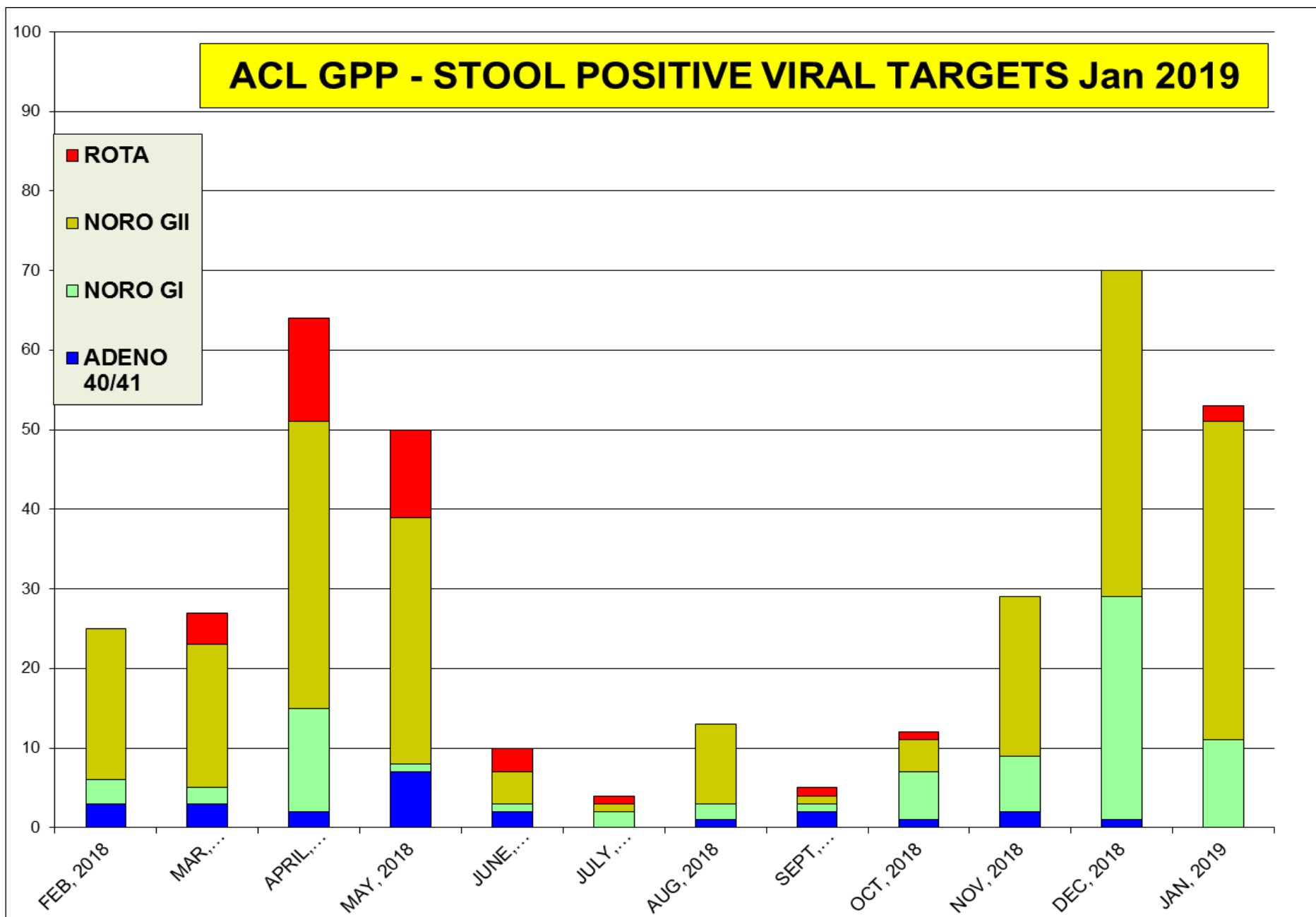




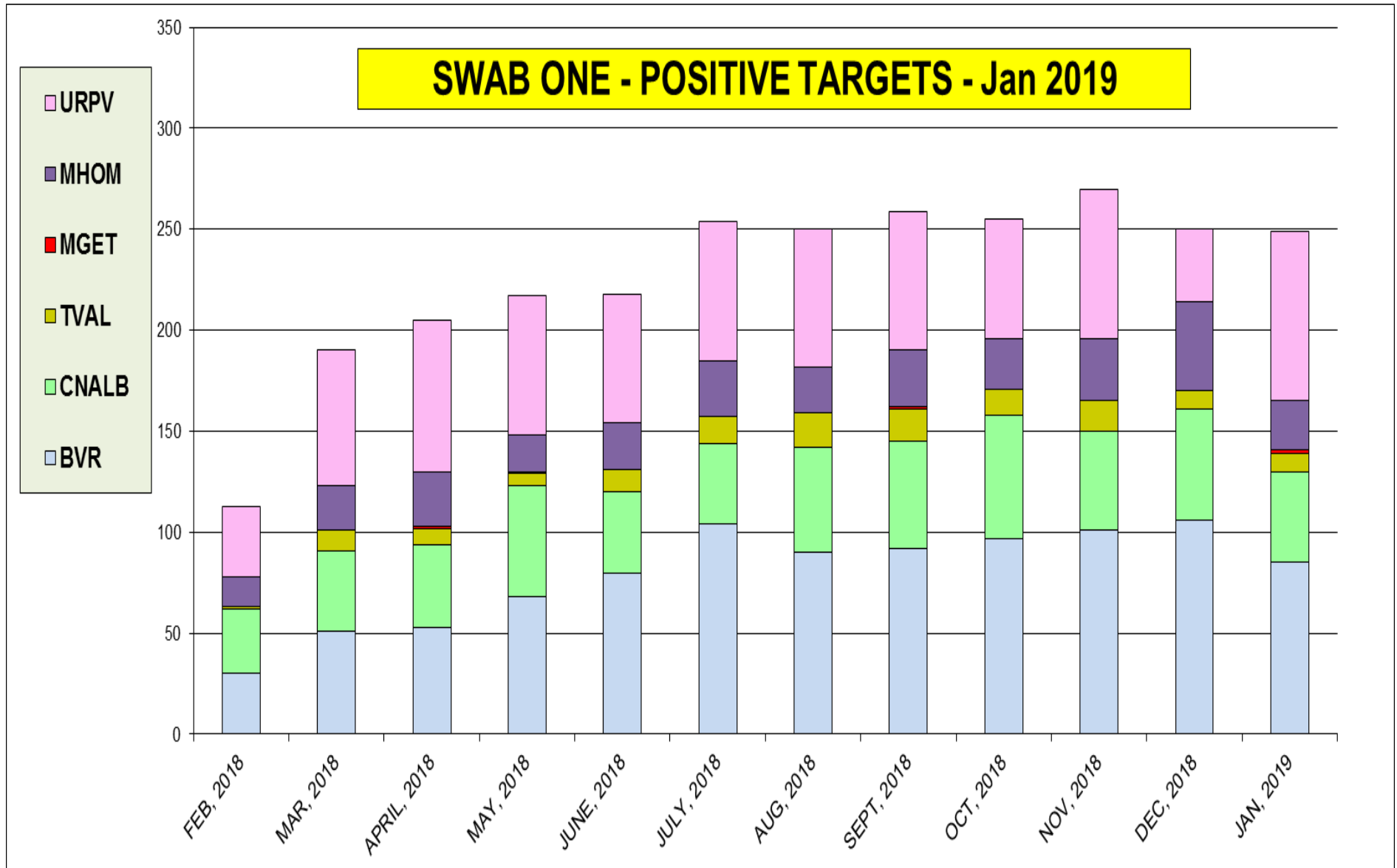
The most prevalent bacterial targets was **Campy** and **Salmonella**



The most prevalent virus target was **Norovirus type I / II** – 10% pos. rate



	BV-Bacterial vagionosis	Candida albicans	Candida galbrata	Candida kruzei	T. vaginalis	M. genitalium	M. hominis	U. parvum	TOTAL % POS
% pos	<b>21.3</b>	<b>12.5</b>	<b>1.9</b>	<b>0.3</b>	<b>2.8</b>	<b>0.1</b>	<b>6.8</b>	<b>17.1</b>	<b>62.8</b>



## Neuraminidase Inhibitors Resistance in samples collected – as of Jan 26, 2019

Per CDC website	Oseltamivir		Peramivir		Zanamivir	
	Virus Samples tested (n)	Resistant Viruses, (%)	Virus Samples tested (n)	Resistant Viruses, (%)	Virus Samples tested (n)	Resistant Viruses, (%)
Influenza A (H1N1)pdm09	<b>431</b>	<b>0.5</b>	<b>431</b>	<b>0.5</b>	<b>431</b>	<b>0</b>
Influenza A (H3N2)	<b>219</b>	<b>0</b>	<b>219</b>	<b>0</b>	<b>219</b>	<b>0</b>
Influenza B	<b>79</b>	<b>0</b>	<b>79</b>	<b>0</b>	<b>79</b>	<b>0</b>

**There 0.5 resistance detected.**