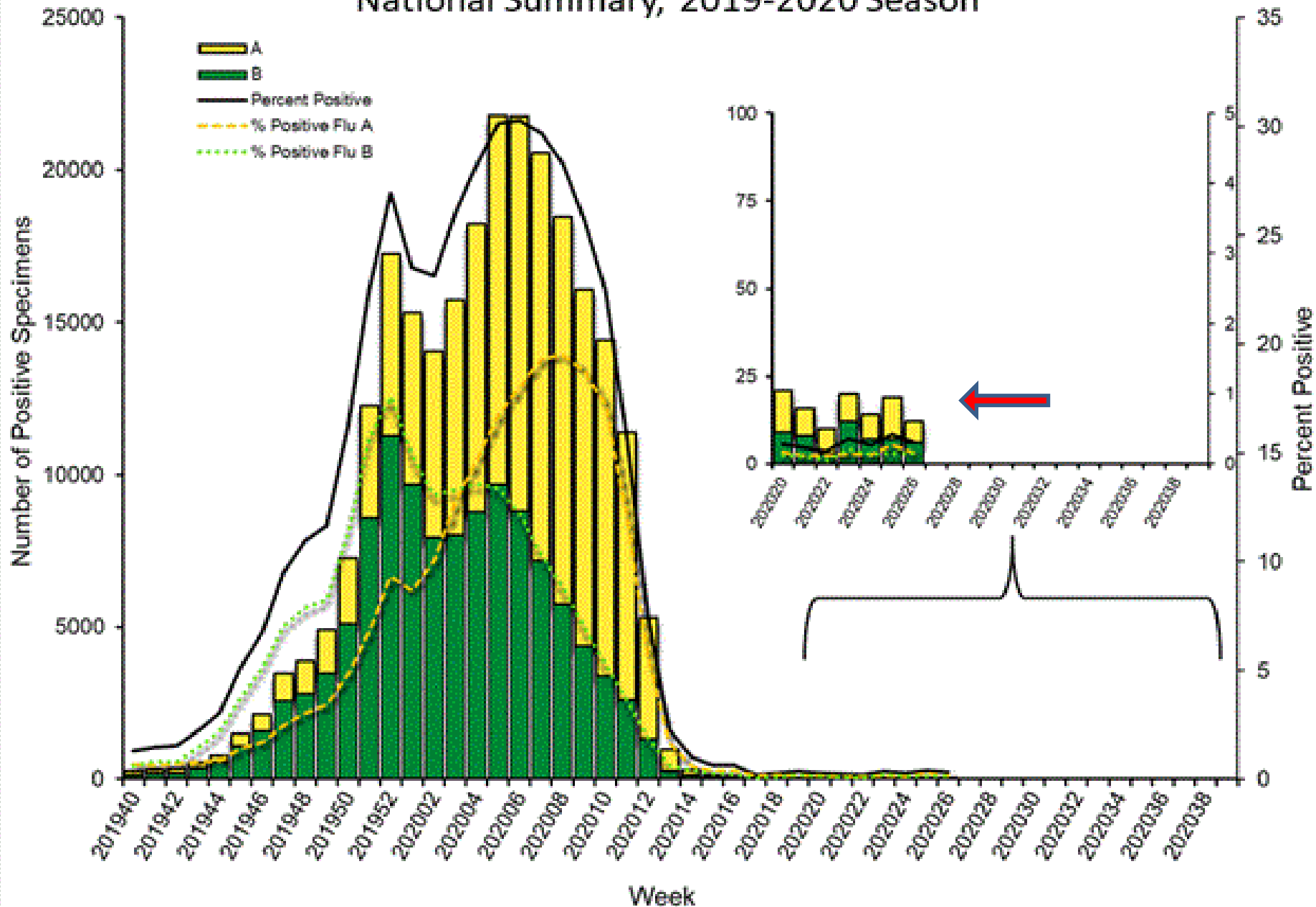


Respiratory Pathogens - 07 03 2020

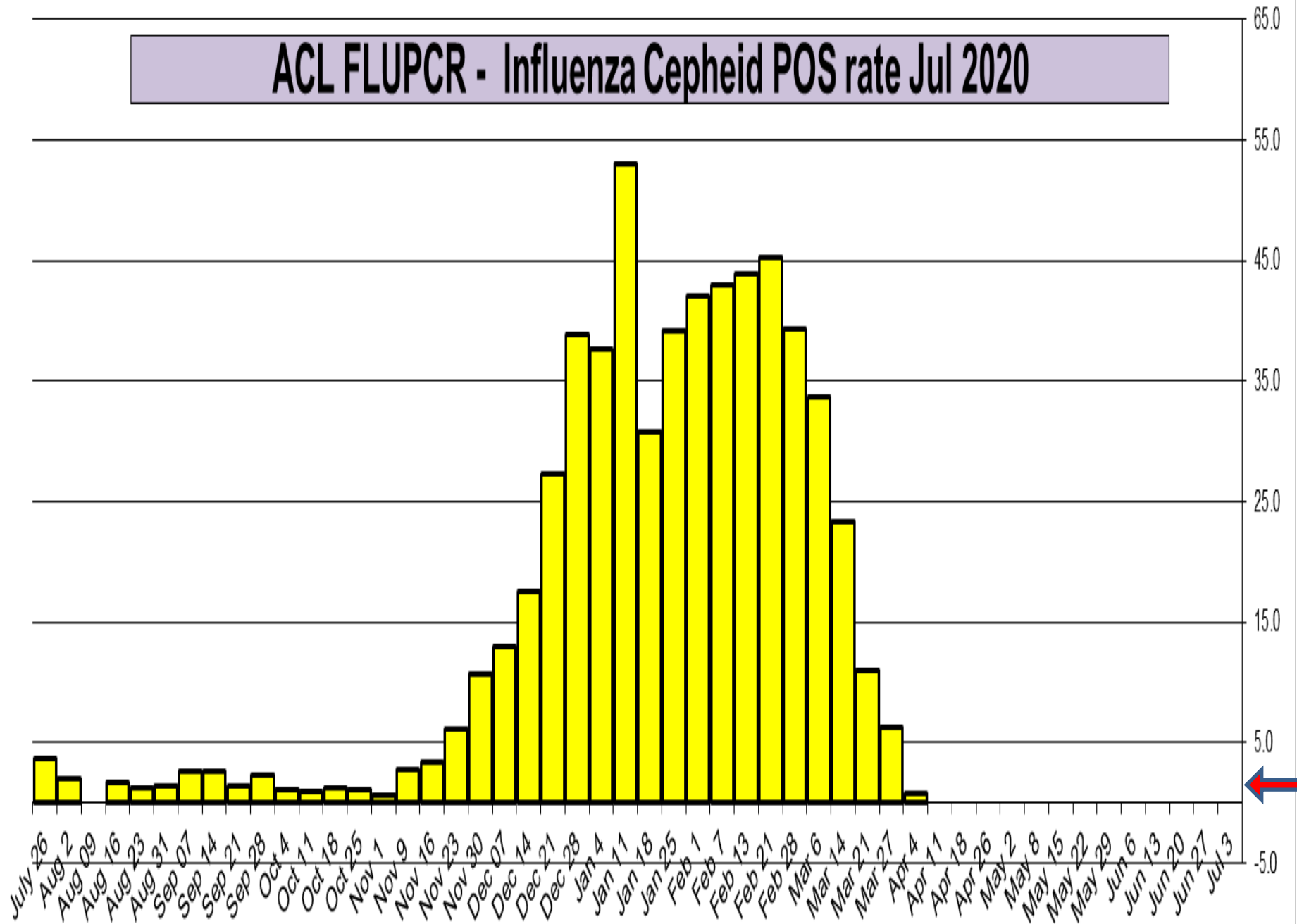


Week	InfA-H1	InfA-H3	2009 H1N1	Inf B	RSV	All Para	EV/ Rhino	Meta pneumo	Adeno	All Corona	Bocca	Myc. pneumo	Chlam. pneumo.	Leg. pneumo.	BP / BPP	Total Pos	POS FLU	Total	ACL RPPNL	US %FLU	IL/WI PCR	ACL FLUPCR	COVID ACL Total %	COVID19 IL %	COVID19 WI %
Jul 3	0	0	0	0	0	0	2	0	0	0	1	0	0	0	0	3	0	91	0.0	n/a	n/a	0.0	4.7	3.7	5.3
Jun 27	0	0	0	0	0	0	0	0	0	0	0	0	0	0	0	0	0	33	0.0	0.3	0.6	0.0	3.7	3.5	3.9
Jun 20	0	0	0	0	1	0	2	0	1	0	1	0	0	0	0	5	0	50	0.0	0.4	1.2	0.0	2.7	3.0	2.5
Jun 13	0	0	0	0	0	0	1	0	0	0	1	0	0	0	0	2	0	49	0.0	0.3	0.3	0.0	3.5	4.5	2.5
Jun 6	0	0	0	0	0	0	2	0	1	0	1	0	0	0	0	4	0	115	0.0	0.2	0.2	0.0	3.6	5.7	2.0
May 29	0	0	0	0	0	0	1	0	1	1	0	0	0	0	0	3	0	51	0.0	0.2	0.2	0.0	5.5	6.7	4.3
May 22	0	0	0	0	0	1	2	1	0	0	0	1	0	0	1	6	0	102	0.0	0.3	0.3	0.0	7.0	9.0	4.4
May 15	0	0	0	0	0	0	2	0	0	0	2	1	0	0	1	6	0	168	1.7	0.3	0.3	0.0	8.0	10.0	5.4
May 8	0	0	0	0	0	0	1	0	0	0	0	0	0	0	1	1	0	71	0.0	0.3	0.4	0.0	12.2	17.0	7.0
May 2	0	0	0	0	0	0	0	1	1	0	1	1	0	0	1	5	0	55	0.0	0.3	0.4	0.0	16.0	19.7	9.4
Apr 26	0	0	0	0	0	0	2	0	1	0	0	0	0	0	0	3	0	62	0.0	0.2	0.2	0.0	18.4	25.0	13.0
Apr 18	0	0	0	0	1	1	1	0	0	0	0	0	0	0	0	3	0	34	0.0	0.4	0.6	0.0	22.4	29.0	15.0
Apr 11	0	0	1	0	1	1	5	3	0	1	0	1	1	0	0	14	1	37	1.7	0.4	0.6	0.0	24.9	30.0	16.0
Apr 4	0	0	0	0	3	0	5	6	5	1	0	1	0	0	1	22	0	66	0.0	0.8	1.1	0.7	27.3	32.0	18.0
Mar 27	0	0	4	7	17	4	49	38	13	22	3	0	0	0	1	168	11	121	9.1	2.1	2.6	6.2	25.3	28.0	14.0
Mar 21	0	0	77	20	53	6	174	99	25	54	8	3	2	0	3	530	103	1691	6.1	7.3	10.4	11.0	15.8	15.8	10.0

Influenza Positive Tests Reported to CDC by U.S. Clinical Laboratories, National Summary, 2019-2020 Season

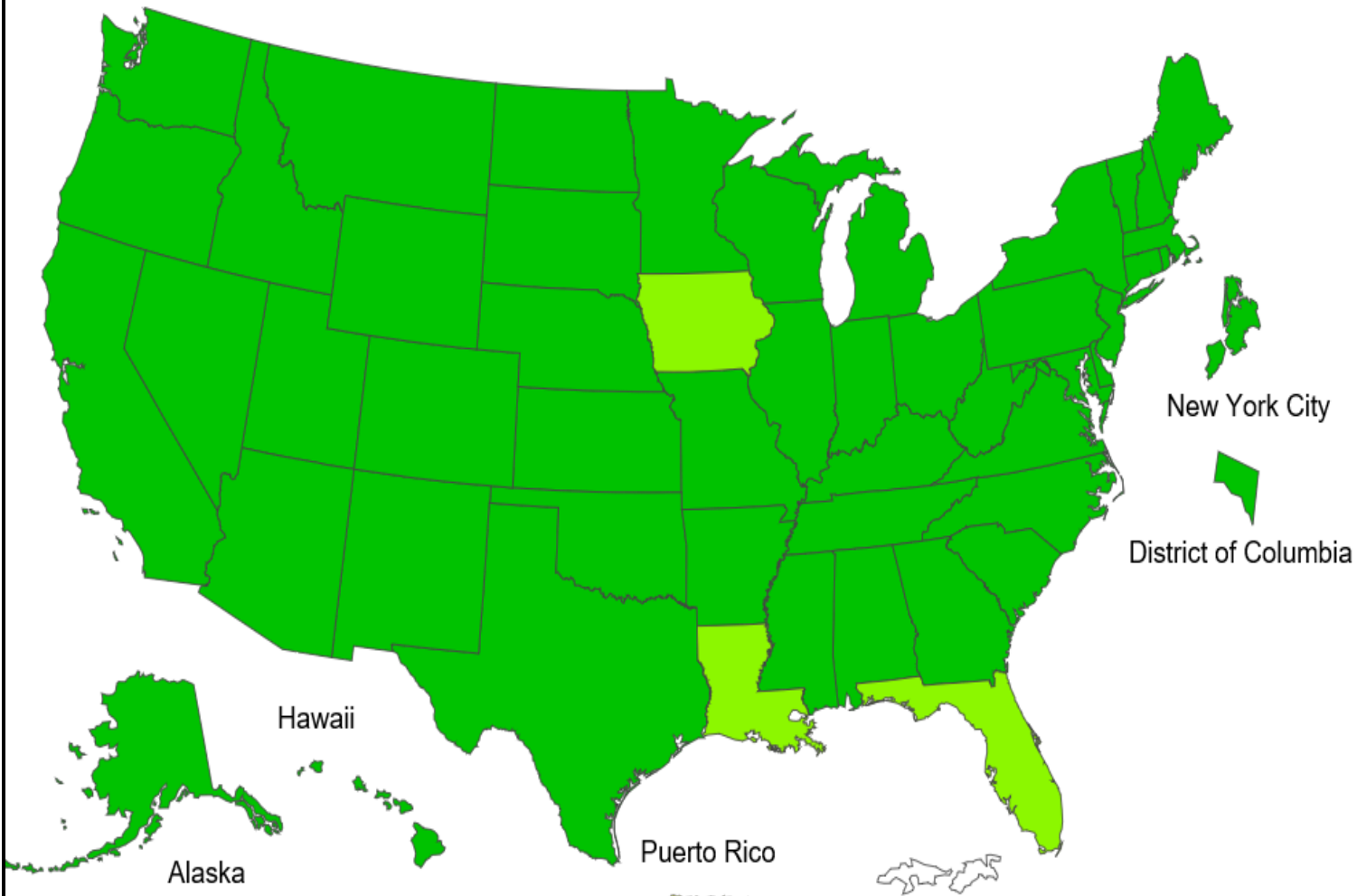
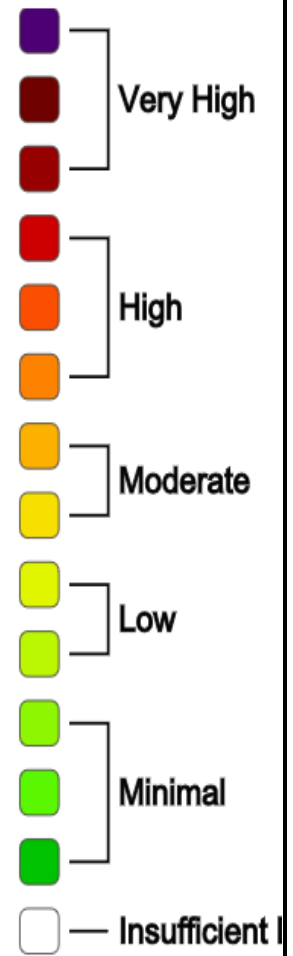


ACL FLUPCR - Influenza Cepheid POS rate Jul 2020



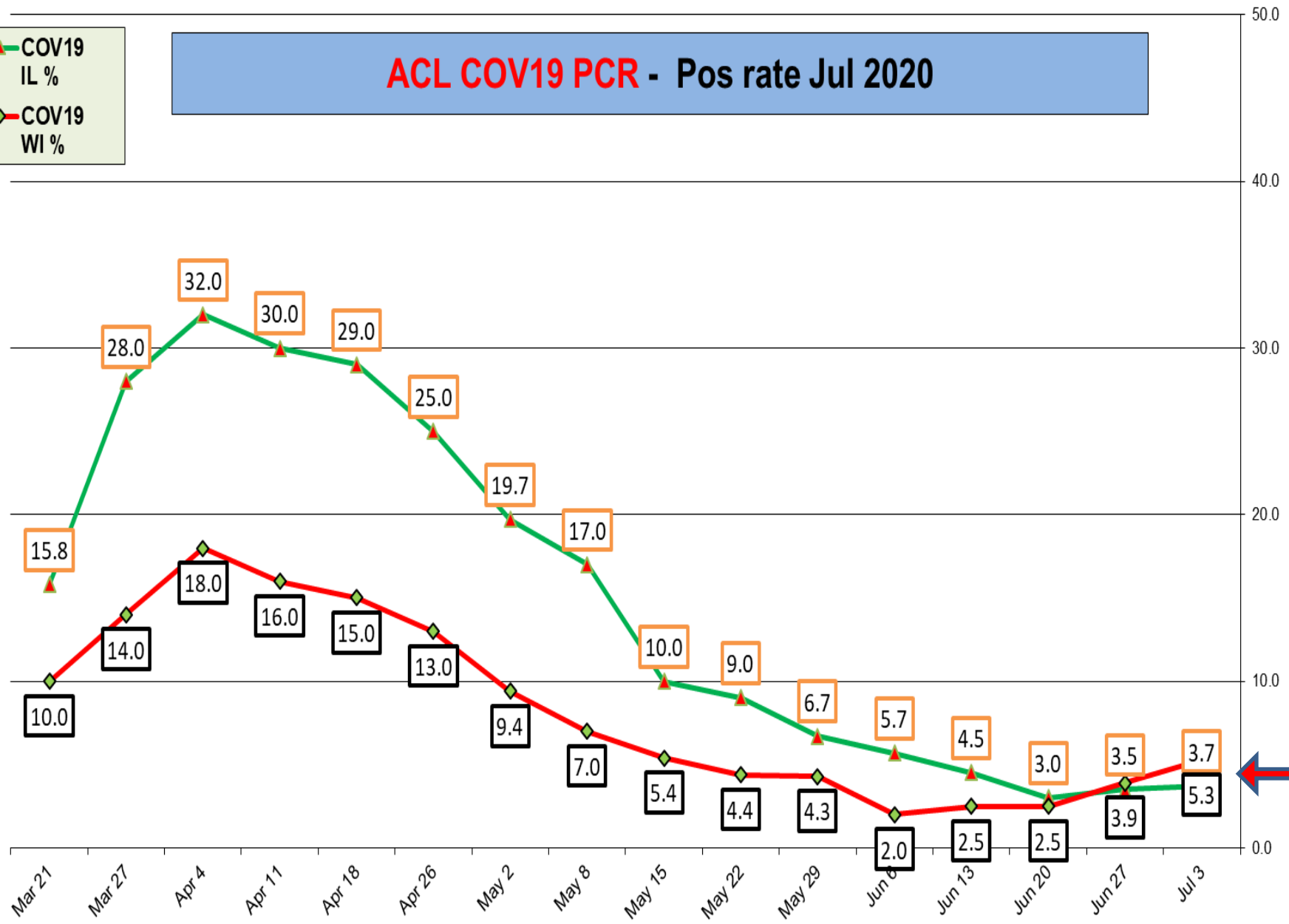
2019-20 Influenza Season Week 26 ending Jun 27, 2020

ILI Activity Level

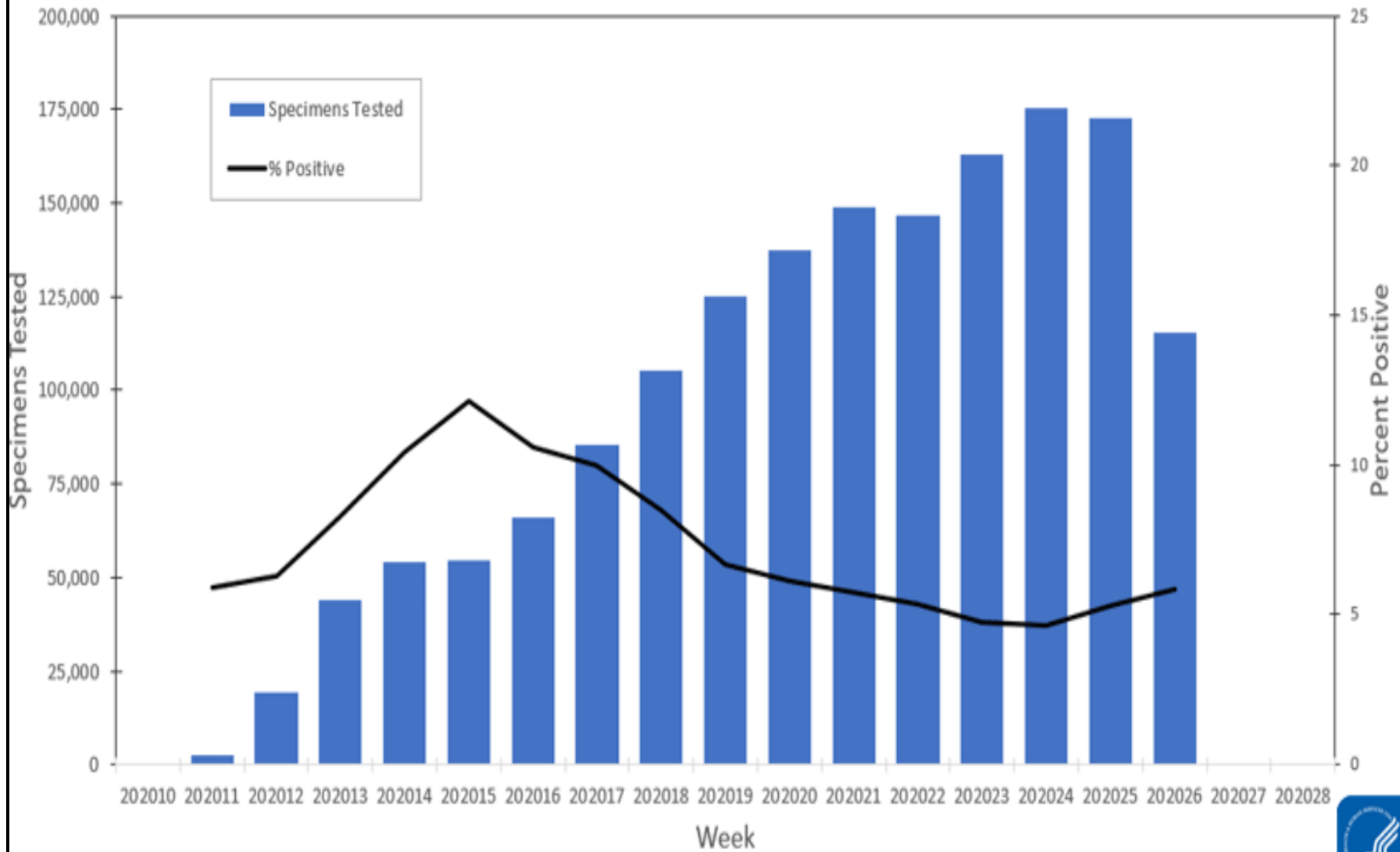


ACL COV19 PCR - Pos rate Jul 2020

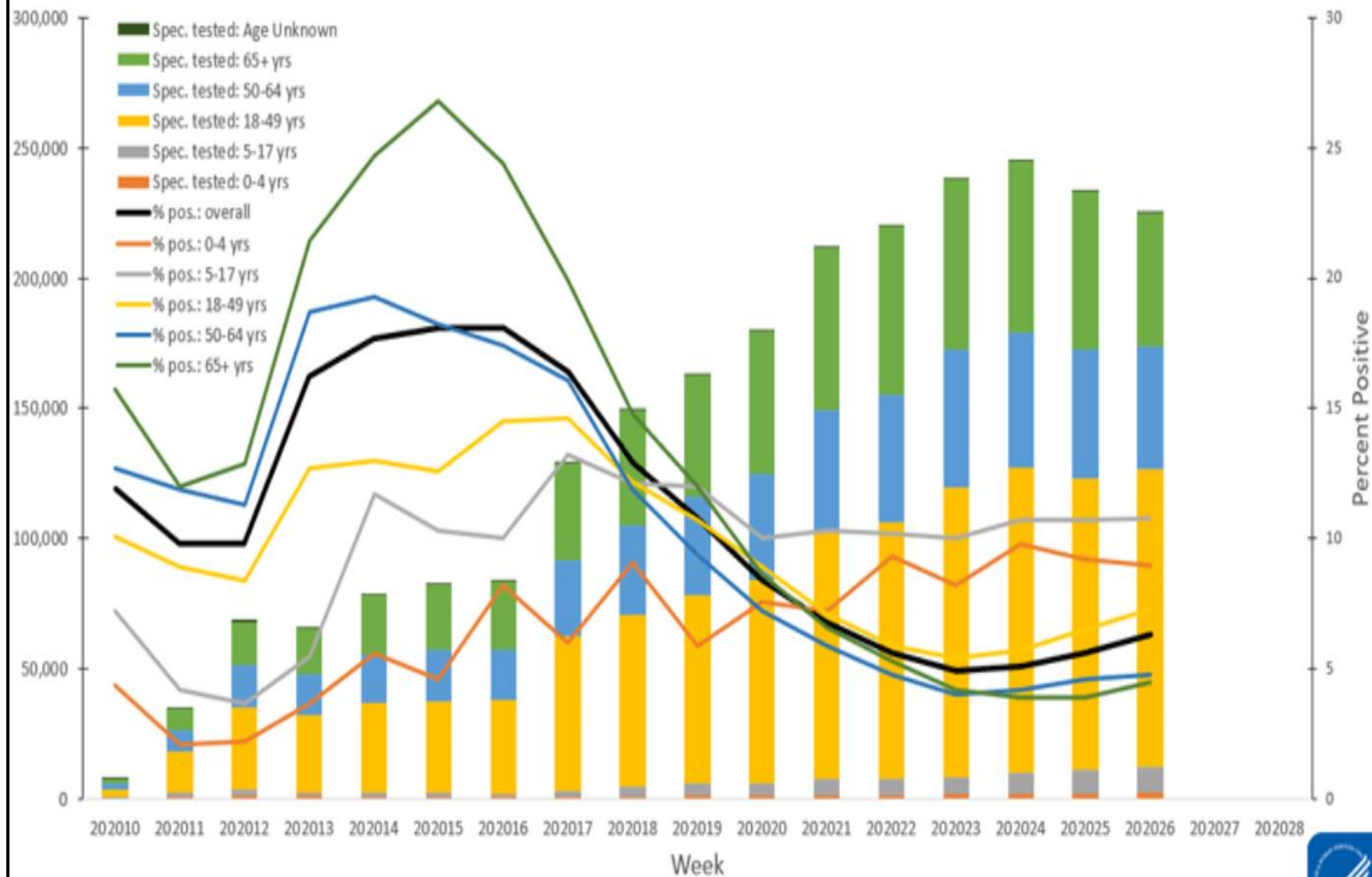
▲ COV19
IL %
◆ COV19
WI %



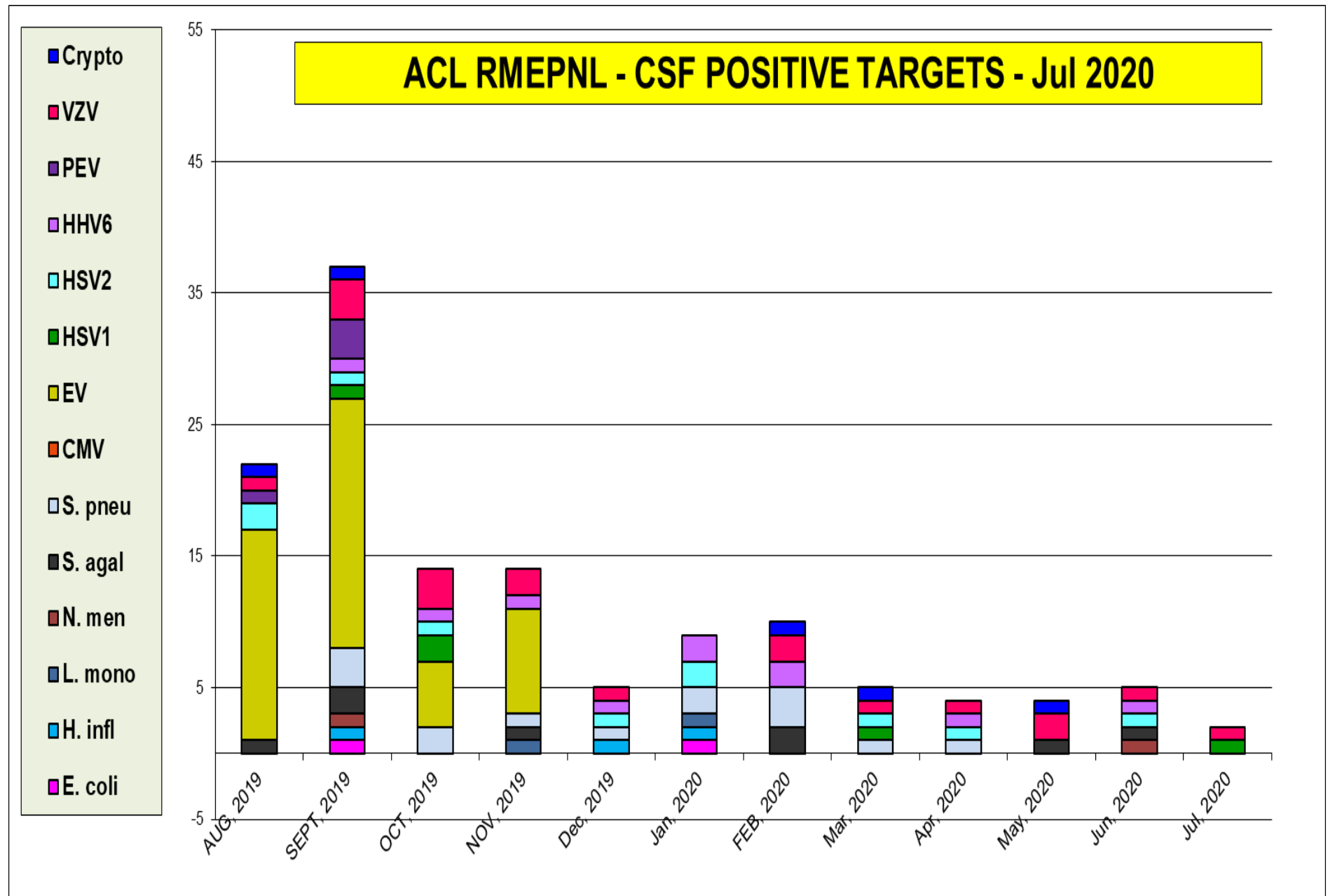
U.S. Clinical Laboratories Reporting to the National Respiratory and Enteric Virus Surveillance System:
Number of Specimens Tested and Percent Positive for SARS-CoV-2
March 8, 2020 - June 27, 2020



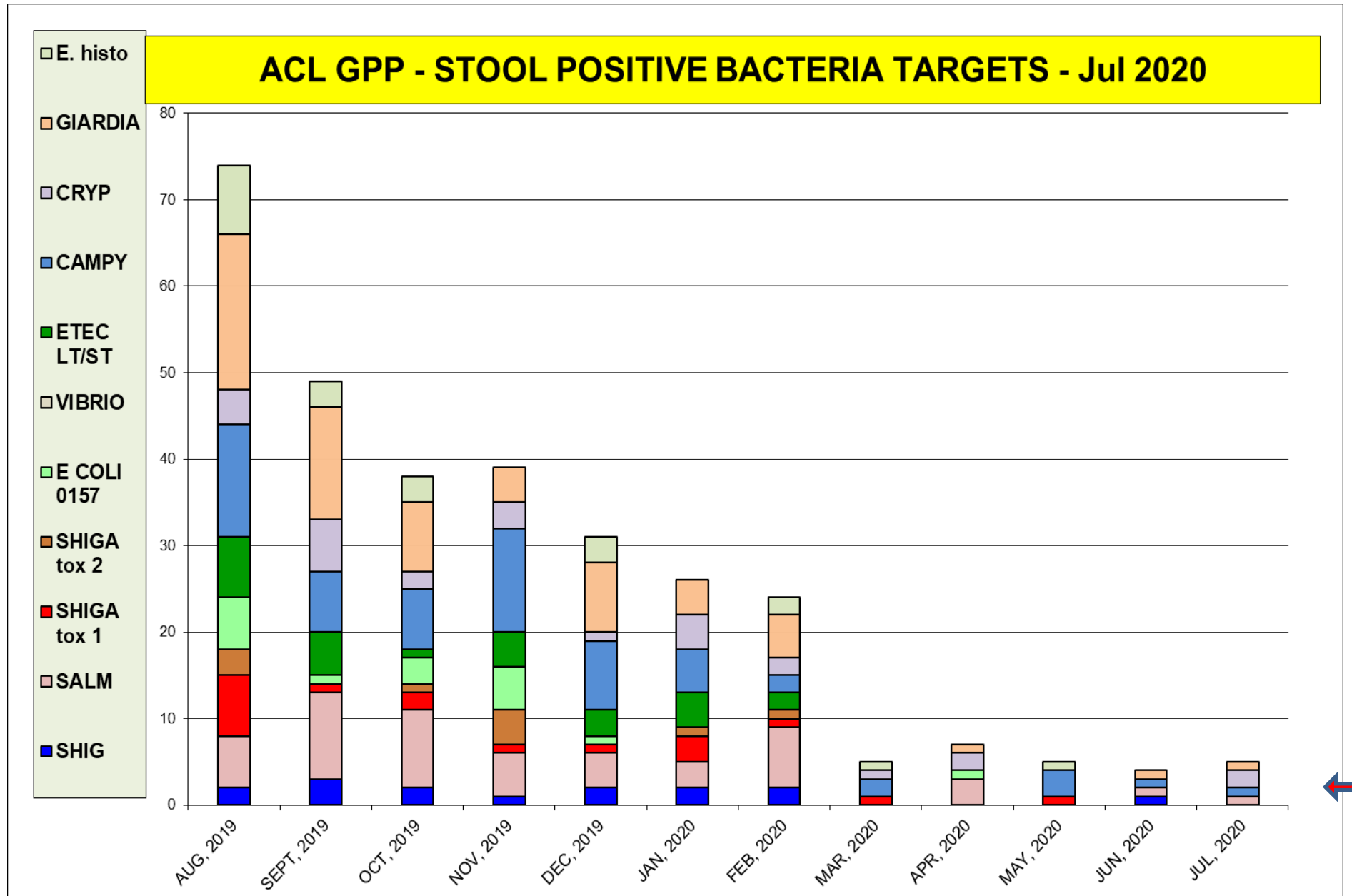
U.S. State and Local Public Health Laboratories Reporting to CDC:
 Number of Specimens Tested and Percent Positive for SARS-CoV-2
 March 1, 2020 - June 27, 2020



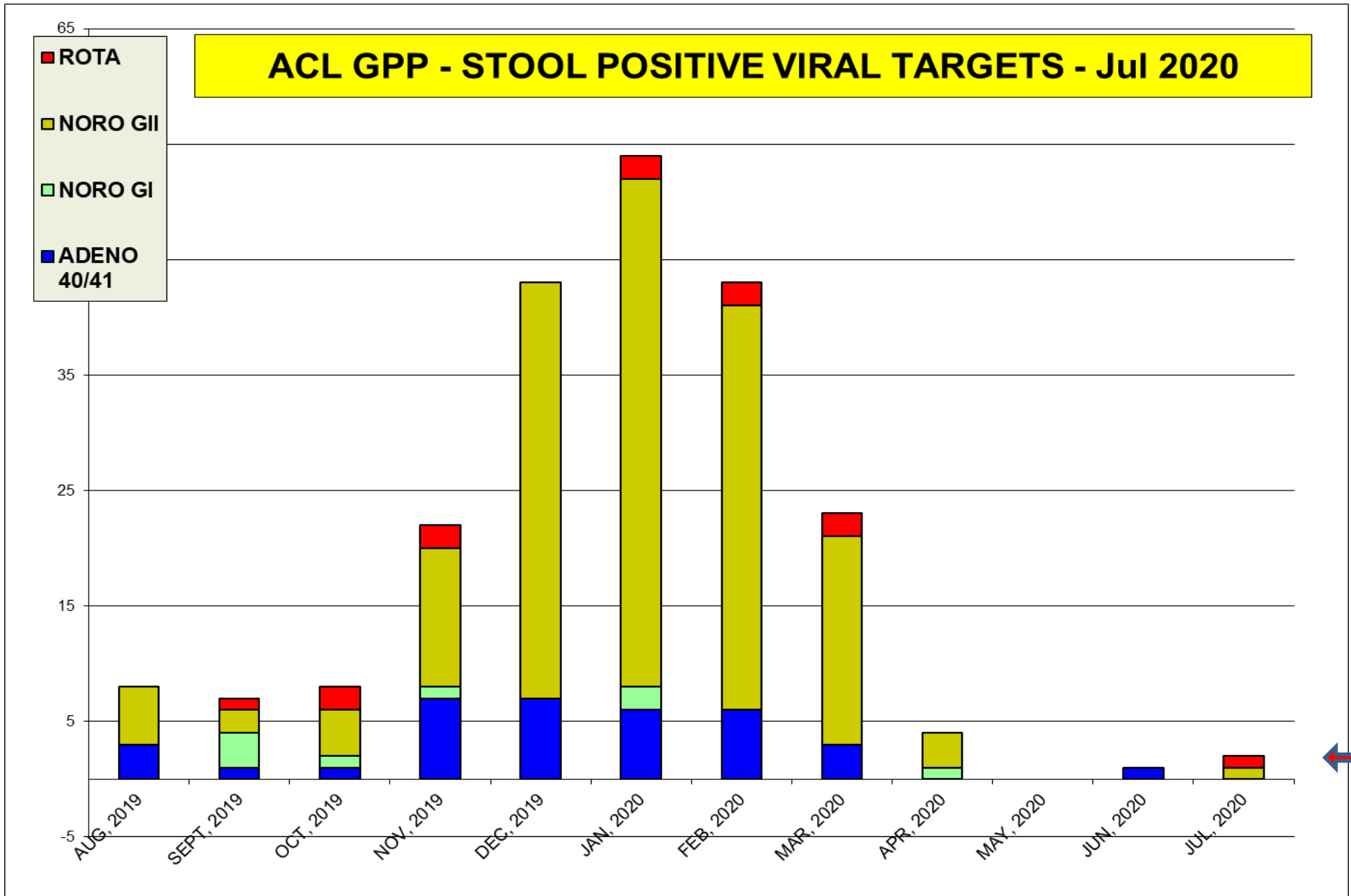
The most prevalent target -all CSF viruses pos rate is 10 %



The most prevalent bacterial targets in Jul (Cryptosporidium)



The most prevalent virus targets in Jul Adeno



Jul positivity rate (%)							
BV	C.ALB	C.GLB	C.KUR	T.VAG	M.GEN	M.HOM	U.PAV
19	25	4	0	6	0	6	14

