

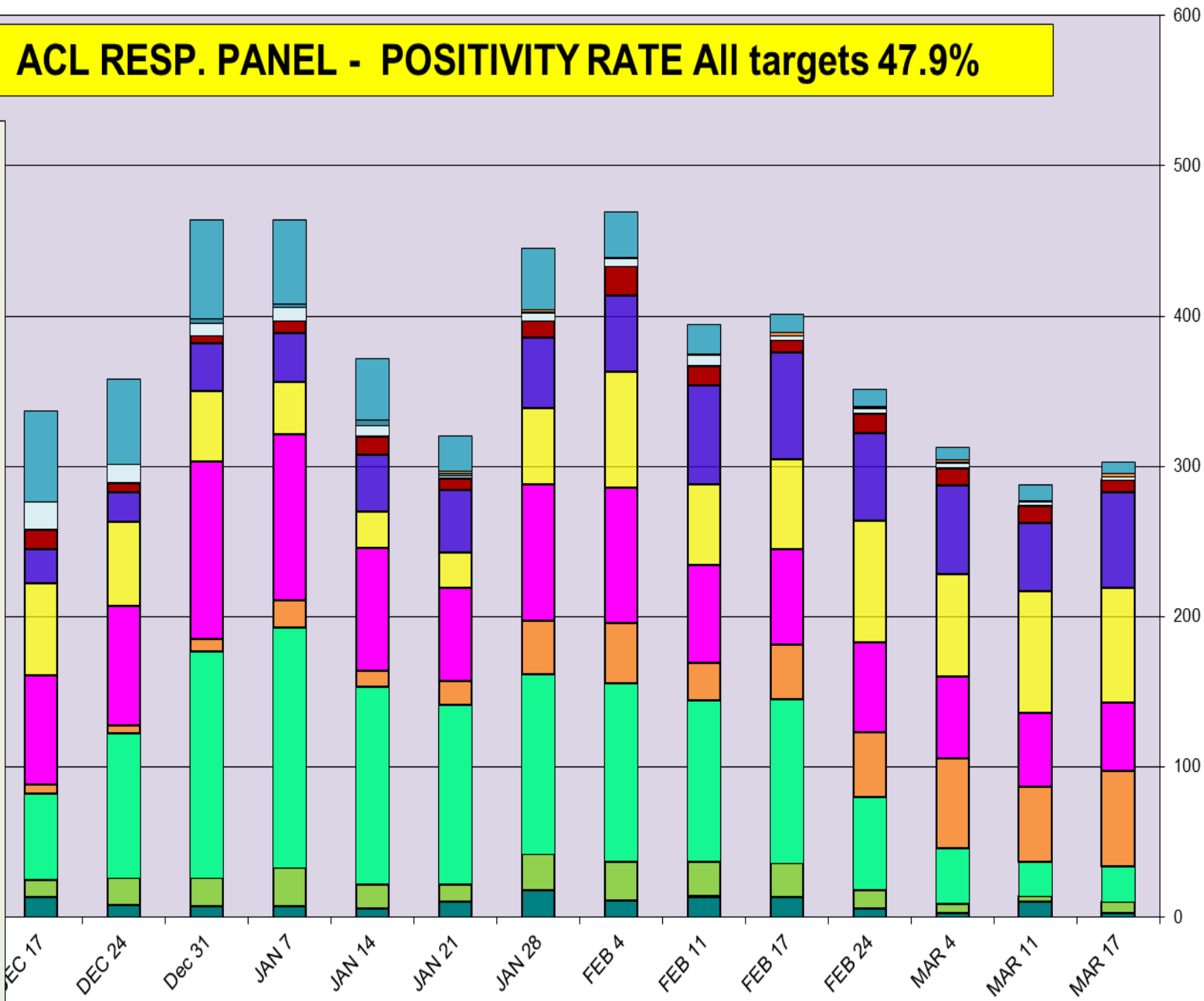
Respiratory Pathogens Data Dec 10 2017 - Mar 24 2018

Week Beginning	InfA-H1	InfA-H3	2009 H1N1	Inf B	RSV	All Para	EV/Rhino	Meta pneumo	Adeno	All Corona	Bocca	Mycoplasma	Chlamydia	Total Pos	POS FLU	Total	ACL %FLU	US %FLU	IL/WI PCR	Sofia EIA
MAR 17	0	24	7	63	46	2	76	64	8	8	3	0	2	303	94	635	14.8	n/a	n/a	22.9
MAR 11	0	23	4	50	49	2	81	45	12	11	10	1	0	288	77	632	12.2	15.3	21.6	22.8
MAR 4	0	37	6	60	54	3	68	59	12	9	3	1	1	313	103	719	14.3	15.0	24.7	22.9
FEB 24	0	62	12	43	60	3	81	58	13	11	6	1	1	351	117	761	15.4	18.3	25.0	22.9
FEB 17	0	109	23	36	64	3	60	71	8	12	13	0	2	401	168	832	20.2	21.6	29.0	28.6
FEB 11	1	107	23	25	65	7	54	66	13	19	13	1	0	394	156	887	17.6	25.4	29.6	28.6
FEB 4	0	119	26	40	90	5	77	51	19	30	11	1	0	469	185	924	20.0	26.5	30.1	31.2
JAN 28	0	120	24	35	91	5	51	47	11	41	18	1	1	445	179	872	20.5	26.3	30.6	33.4
JAN 21	0	119	12	16	62	2	24	41	8	23	10	1	2	320	147	1039	14.1	26.1	30.3	31.0
JAN 14	0	131	16	11	82	7	24	38	12	41	6	4	0	372	158	876	18.0	26.7	27.5	29.9
JAN 7	0	160	26	18	110	9	35	33	8	56	7	2	0	464	204	964	21.2	25.6	26.5	30.9
Dec 31	0	151	19	8	118	8	47	32	5	66	7	3	0	464	178	898	19.8	24.7	24.7	29.3
DEC 24	0	96	18	6	79	12	56	20	6	57	8	0	0	358	120	708	16.9	25.5	20.7	29.5
DEC 17	0	57	12	6	73	18	61	23	13	61	13	0	0	337	75	590	12.7	22.4	14.5	24.2
DEC 10	0	32	6	4	70	18	55	11	6	45	4	1	0	252	42	587	7.2	14.0	9.2	16.5

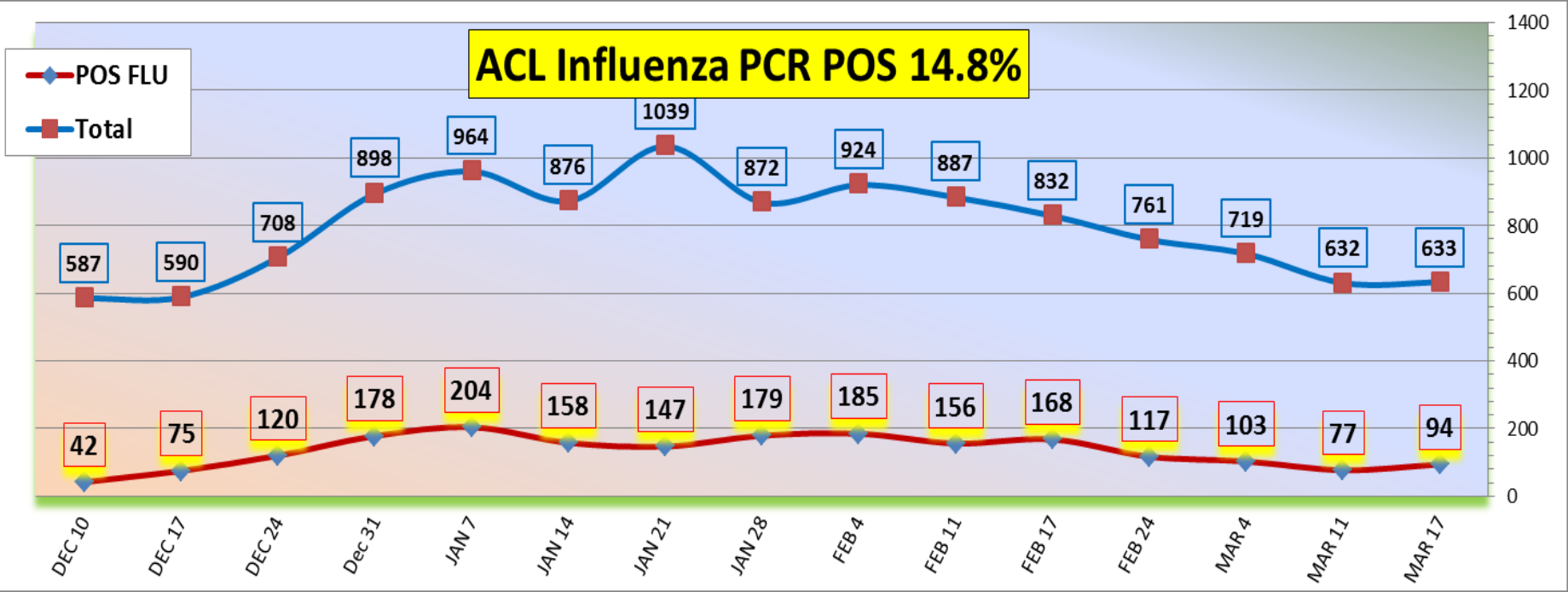
Flu PCR % Rate

ACL RESP. PANEL - POSITIVITY RATE All targets 47.9%

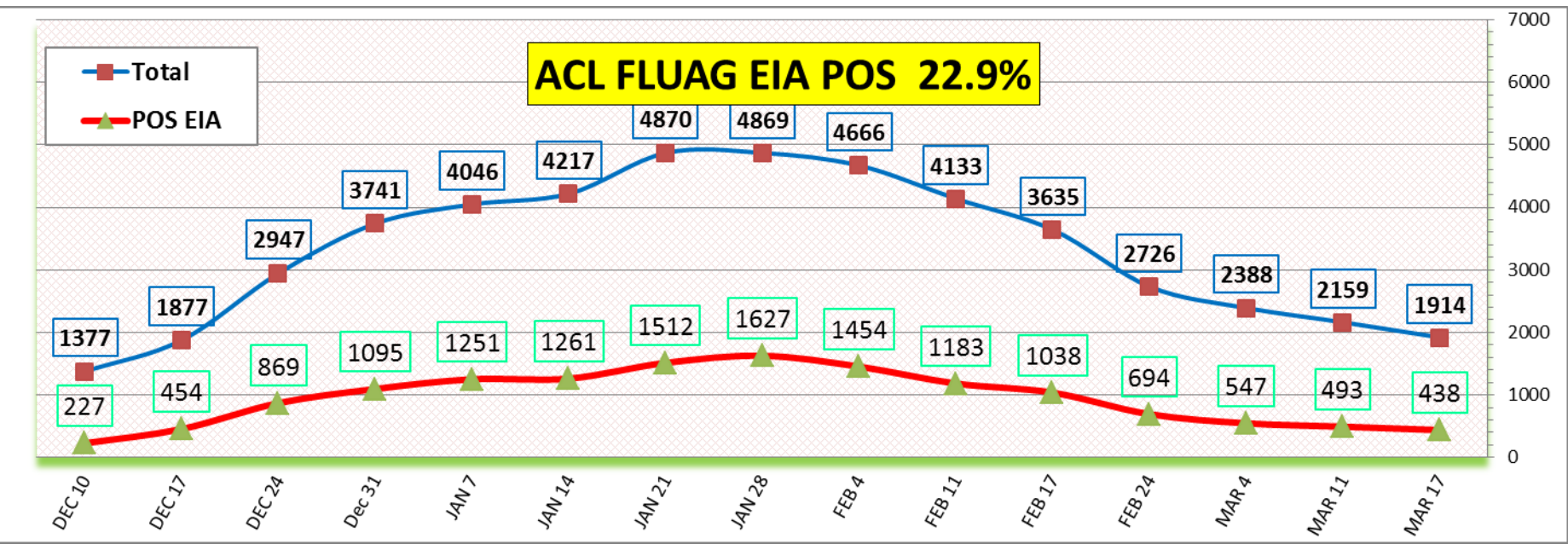
- All Corona
- Chla mydia
- Myco plasma
- All Para
- Adeno
- Meta pneumo
- EV / Rhino
- RSV
- Inf B
- InfA-H3
- 2009 H1N1
- InfA-H1
- Bocca



ACL Influenza PCR POS 14.8%

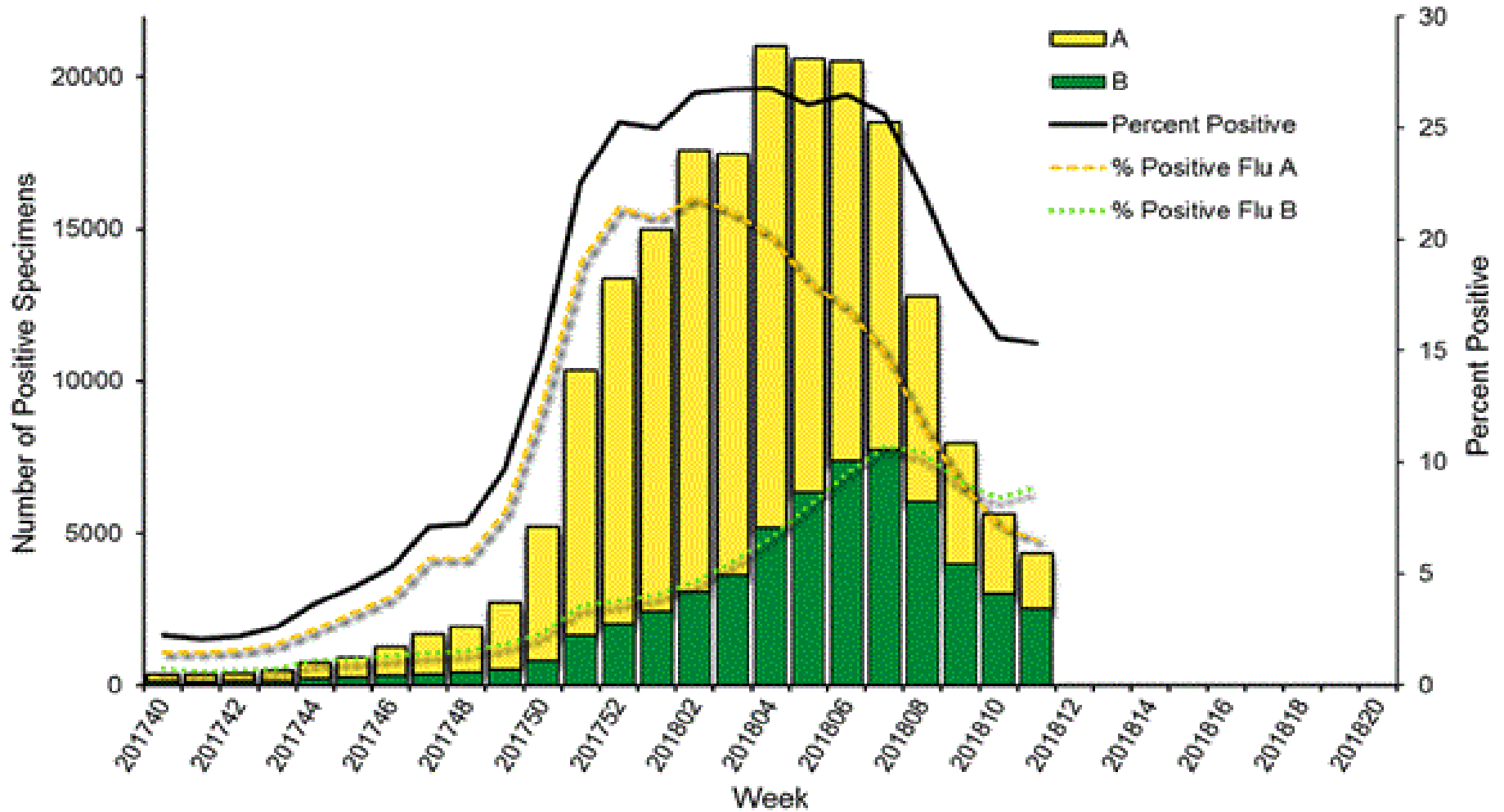


ACL FLUAG EIA POS 22.9%



CDC Mar 17, 2018 **Positivity rate 15.3%** - Flu A – 42% (2009 H1N1 -36% , seasonal H3 -54%) Flu B – 58.0%

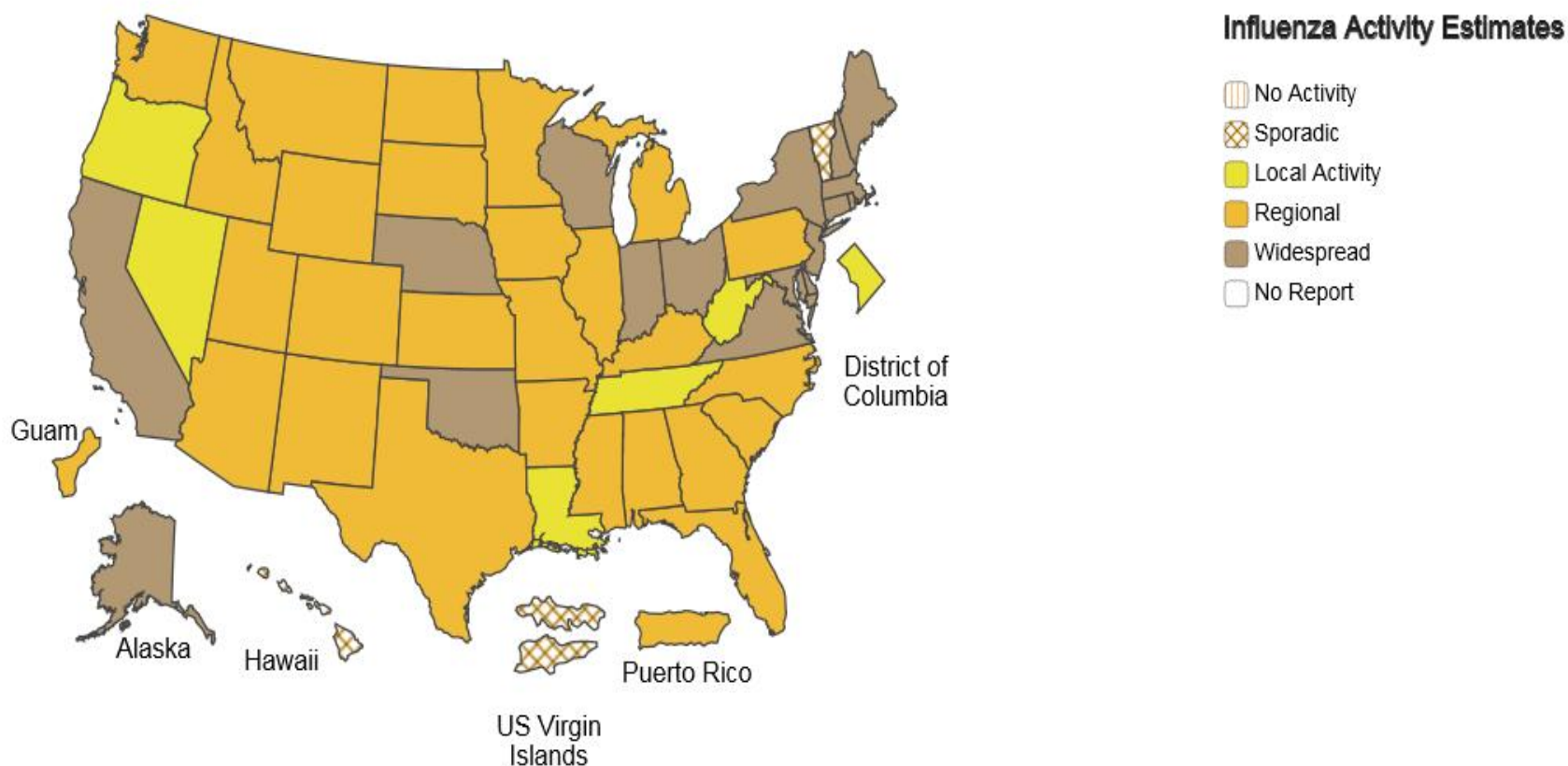
Influenza Positive Tests Reported to CDC by U.S. Clinical Laboratories, National Summary, 2017-2018 Season



A Weekly Influenza Surveillance Report Prepared by the Influenza Division

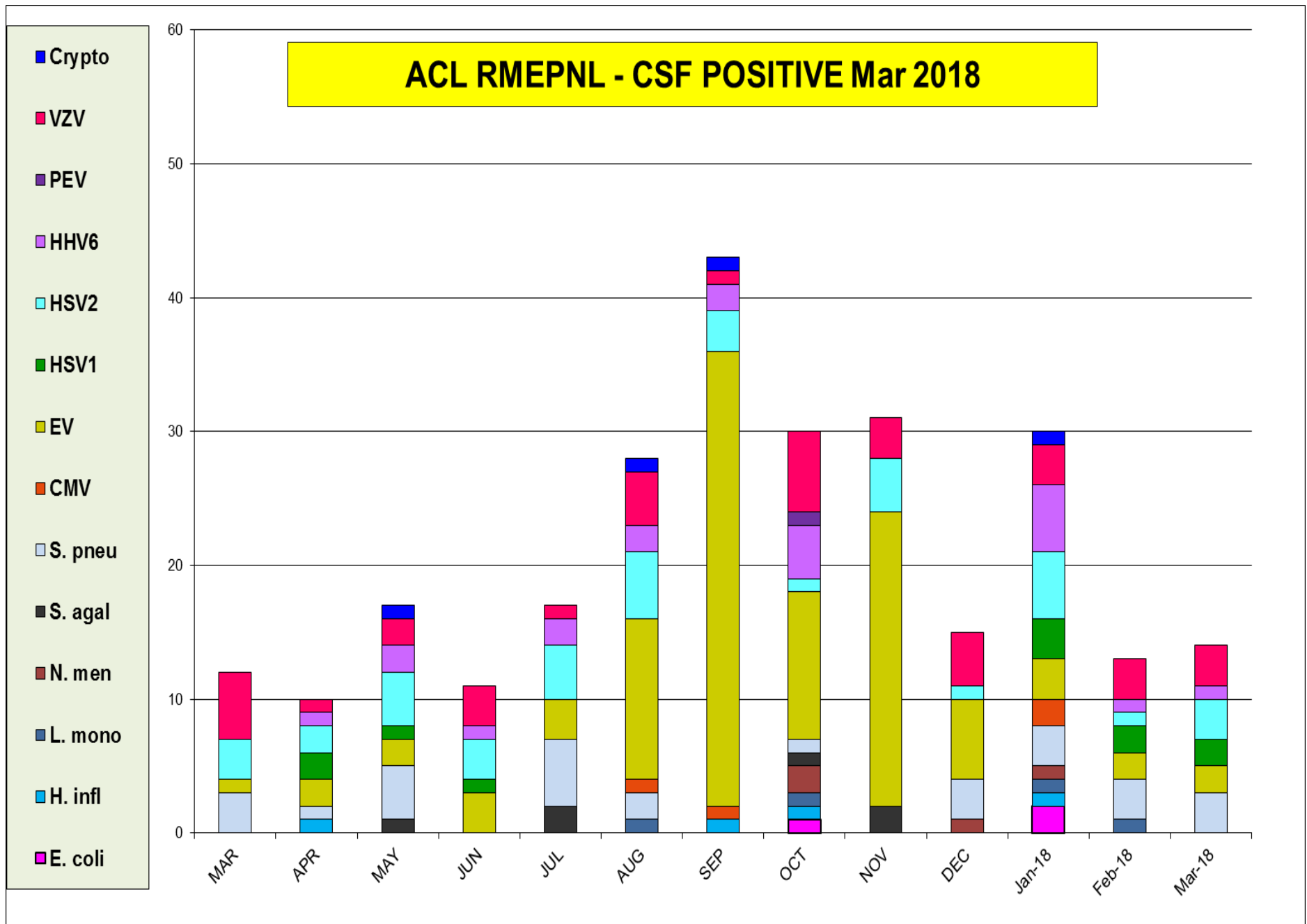
Weekly Influenza Activity Estimates Reported by State and Territorial Epidemiologists*

Week Ending Mar 17, 2018 - Week 11



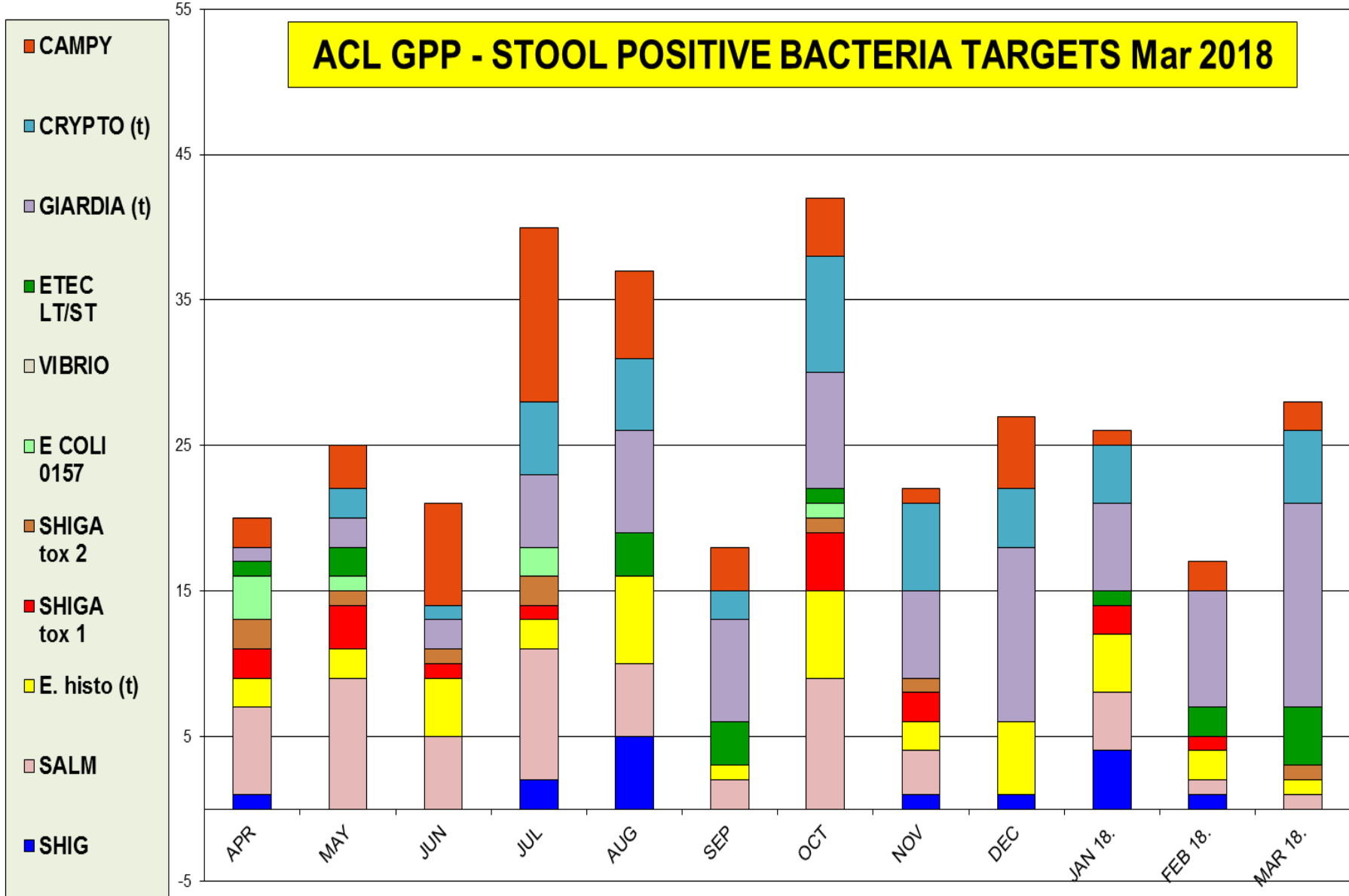
*This map indicates geographic spread and does not measure the severity of influenza activity.

The most prevalent target as Mar 24th are; *S. pneumo*, HSV2, VZV (positivity rate 11%)

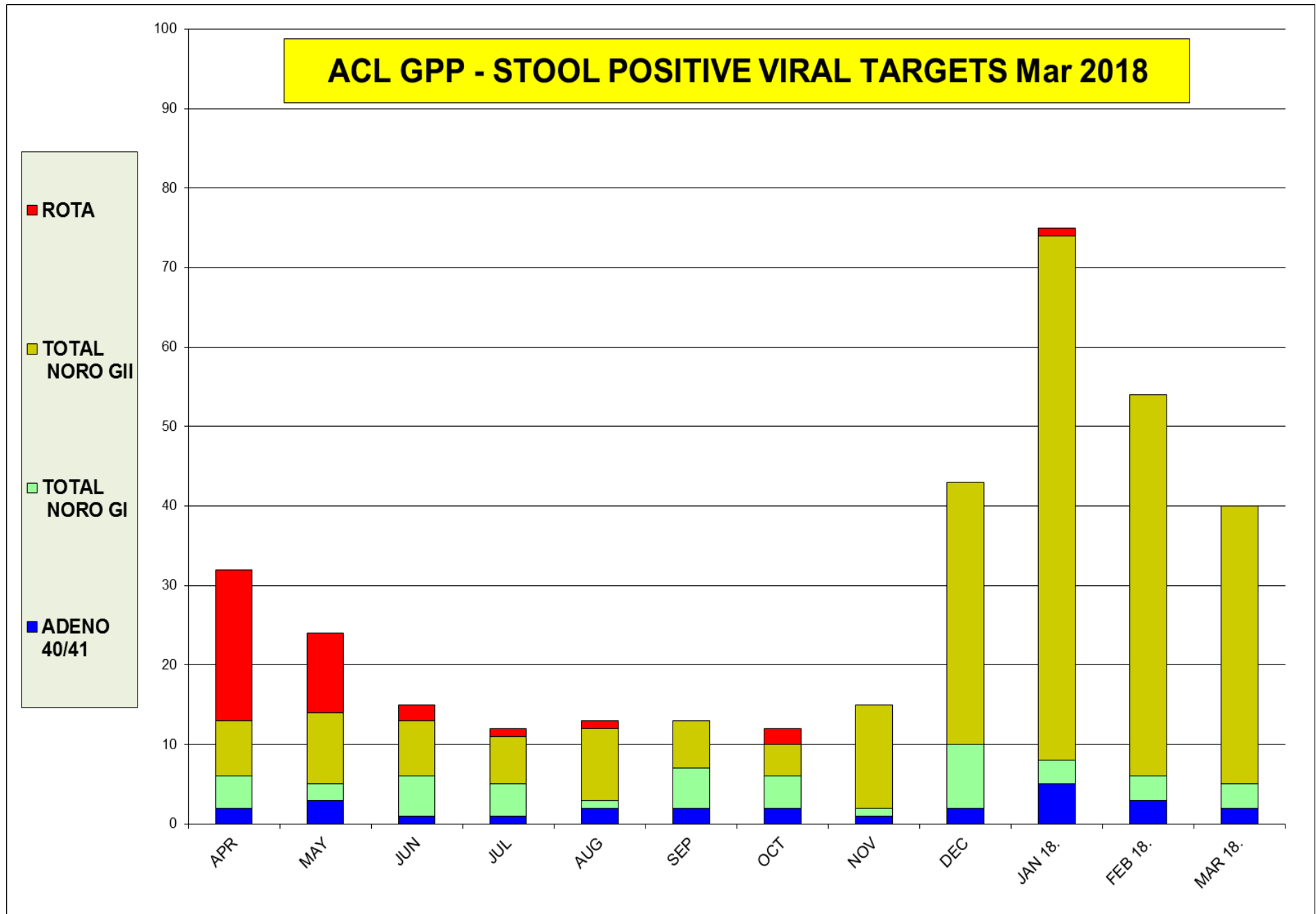


The most prevalent targets as Mar 24th is Giardia,

ACL GPP - STOOL POSITIVE BACTERIA TARGETS Mar 2018



The most prevalent target as Mar 24th are; NORO GII and GI virus



Neuraminidase Inhibitors Resistance in Samples Collected - Oct 1- Mar 17, 2018,

Per CDC website	Oseltamivir		Zanamivir		Peramivir	
	Virus Samples tested (n)	Resistant Viruses, (%)	Virus Samples tested (n)	Resistant Viruses, (%)	Virus Samples tested (n)	Resistant Viruses, (%)
Influenza A (H1N1)pdm09	702	9(1.3)	511	0	702	9(1.3)
Influenza A (H3N2)	1495	0	1495	0	965	0
Influenza B	659	0	659	0	659	0