

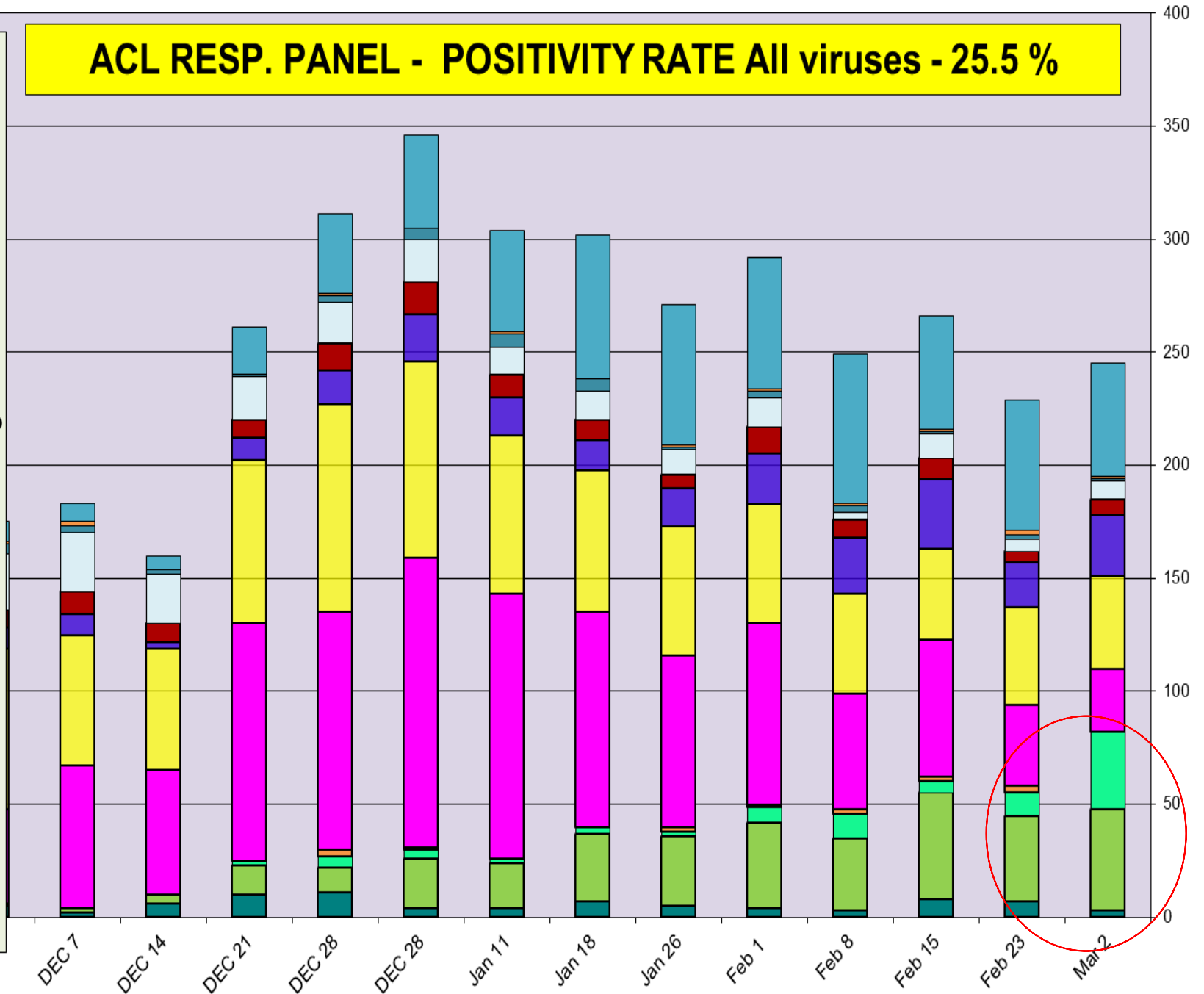
## Respiratory Pathogens Nov 30 2018 - Mar 9 2019

Week Beginning	InfA-H1	InfA-H3	2009 H1N1	Inf B	RSV	All Para	EV/ Rhino	Meta pneumo	Adeno	All Corona	Bocca	Mycoplasma	Chlamydia	Total Pos	POS FLU	Total	ACL %FLU	US %FLU	IL/WI PCR	Sofia EIA
Mar 2	0	34	45	0	28	8	41	27	7	50	3	1	1	245	79	961	8.2	n/a	n/a	27.2
Feb 23	0	10	38	3	36	5	43	20	5	58	7	2	2	229	51	908	5.6	26.1	28.0	26.5
Feb 15	0	5	47	2	61	11	40	31	9	50	8	1	1	266	54	807	6.7	26.7	22.3	
Feb 8	0	11	32	2	51	3	44	25	8	66	3	3	1	249	45	767	5.9	24.6	19.3	
Feb 1	0	7	38	1	80	13	53	22	12	58	4	3	1	292	46	751	6.1	21.6	16.6	19.6
Jan 26	0	2	31	2	76	11	57	17	6	62	5	1	1	271	35	947	3.7	19.2	14.6	18.3
Jan 18	0	3	30	0	95	13	63	13	9	64	7	5	0	302	33	1064	3.1	15.7	13.3	16.6
Jan 11	0	2	20	0	117	12	70	17	10	45	4	6	1	304	22	1026	2.1	12.7	11.6	10.6
DEC 28	0	4	22	1	128	19	87	21	14	41	4	5	0	346	27	812	3.3	12.7	11.8	9.6
DEC 28	0	5	11	3	105	18	92	15	12	35	11	3	1	311	19	783	2.4	13.7	9.0	8.2
DEC 21	0	2	13	0	105	19	72	10	8	21	10	1	0	261	15	766	2.0	15.6	6.9	7.2
DEC 14	0	0	4	0	55	22	54	3	8	6	6	2	0	160	4	891	0.4	11.0	4.1	5.1
DEC 7	0	0	2	0	63	26	58	9	10	8	2	3	2	183	2	785	0.3	3.6	1.8	3.6
Nov 30	0	0	1	0	42	25	71	9	8	9	5	4	1	175	1	641	0.6	4.2	1.9	1.9

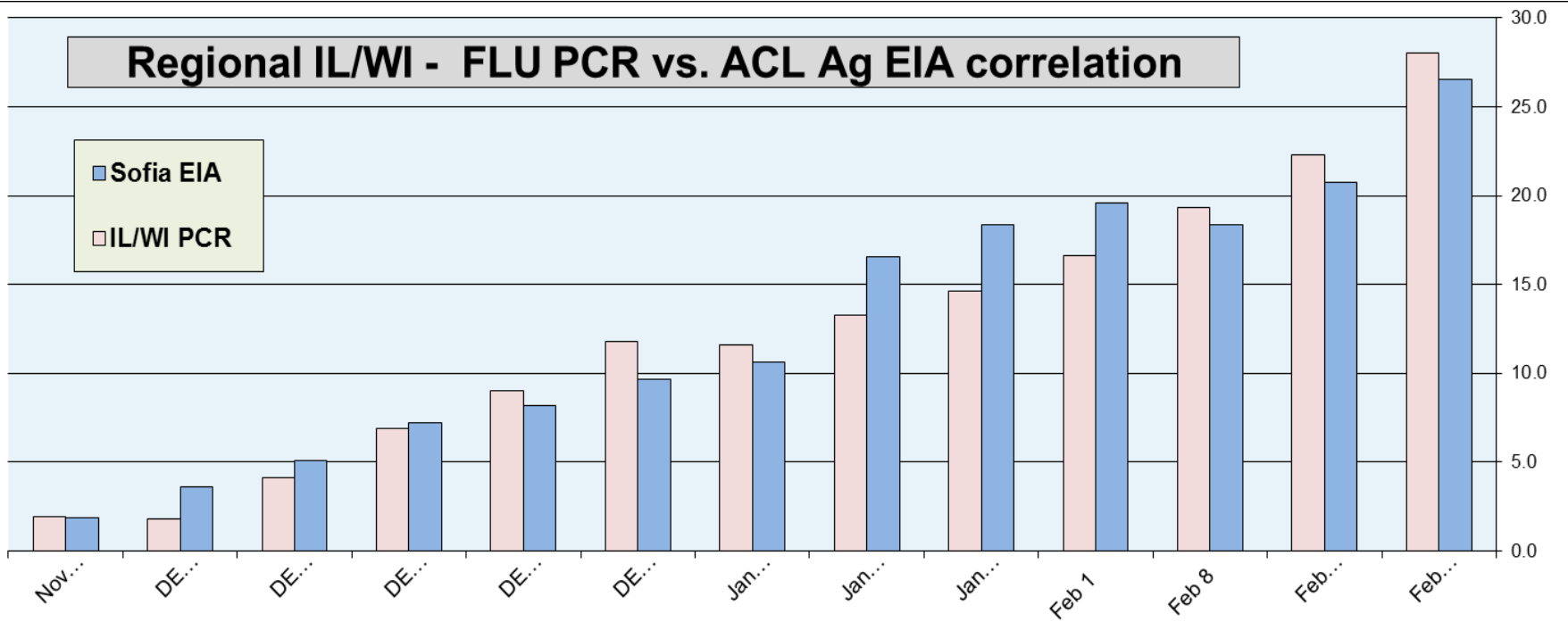
Flu PCR % Rate

# ACL RESP. PANEL - POSITIVITY RATE All viruses - 25.5 %

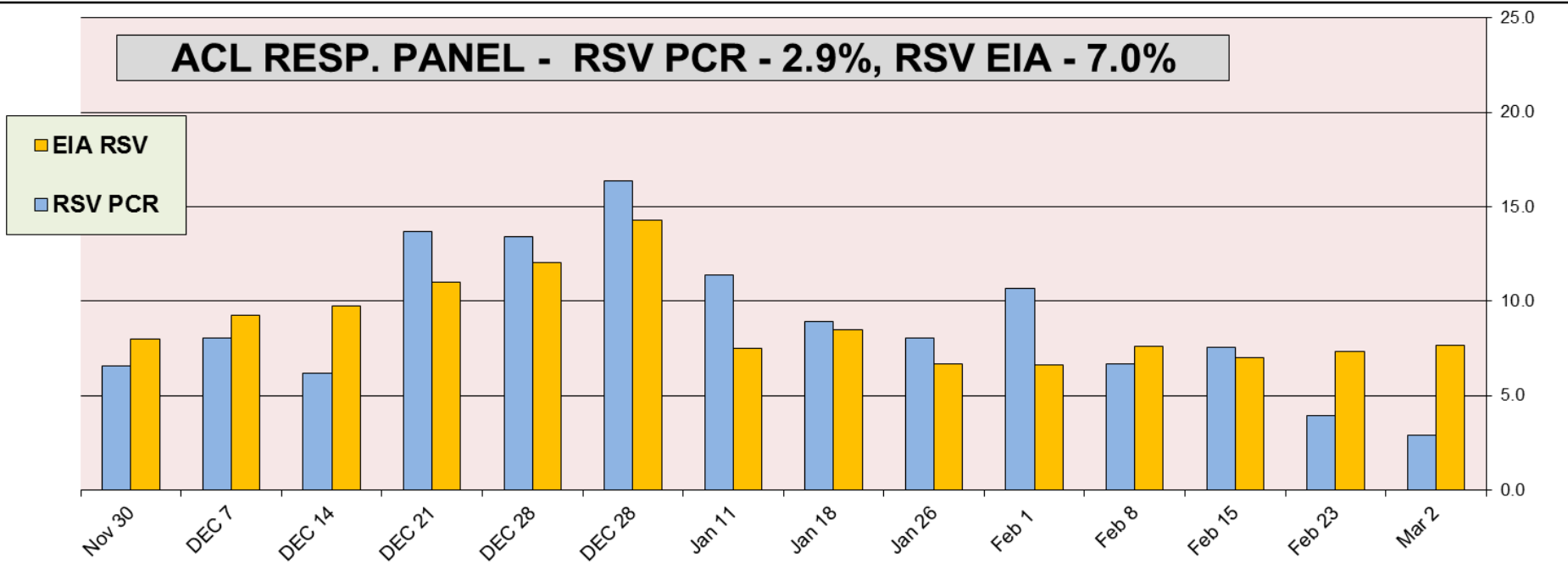
- All Corona
- Chla mydia
- Myco plasma
- All Para
- Adeno
- Meta pneumo
- EV / Rhino
- RSV
- Inf B
- InfA-H3
- 2009 H1N1
- InfA-H1
- Bocca



### Regional IL/WI - FLU PCR vs. ACL Ag EIA correlation



### ACL RESP. PANEL - RSV PCR - 2.9%, RSV EIA - 7.0%



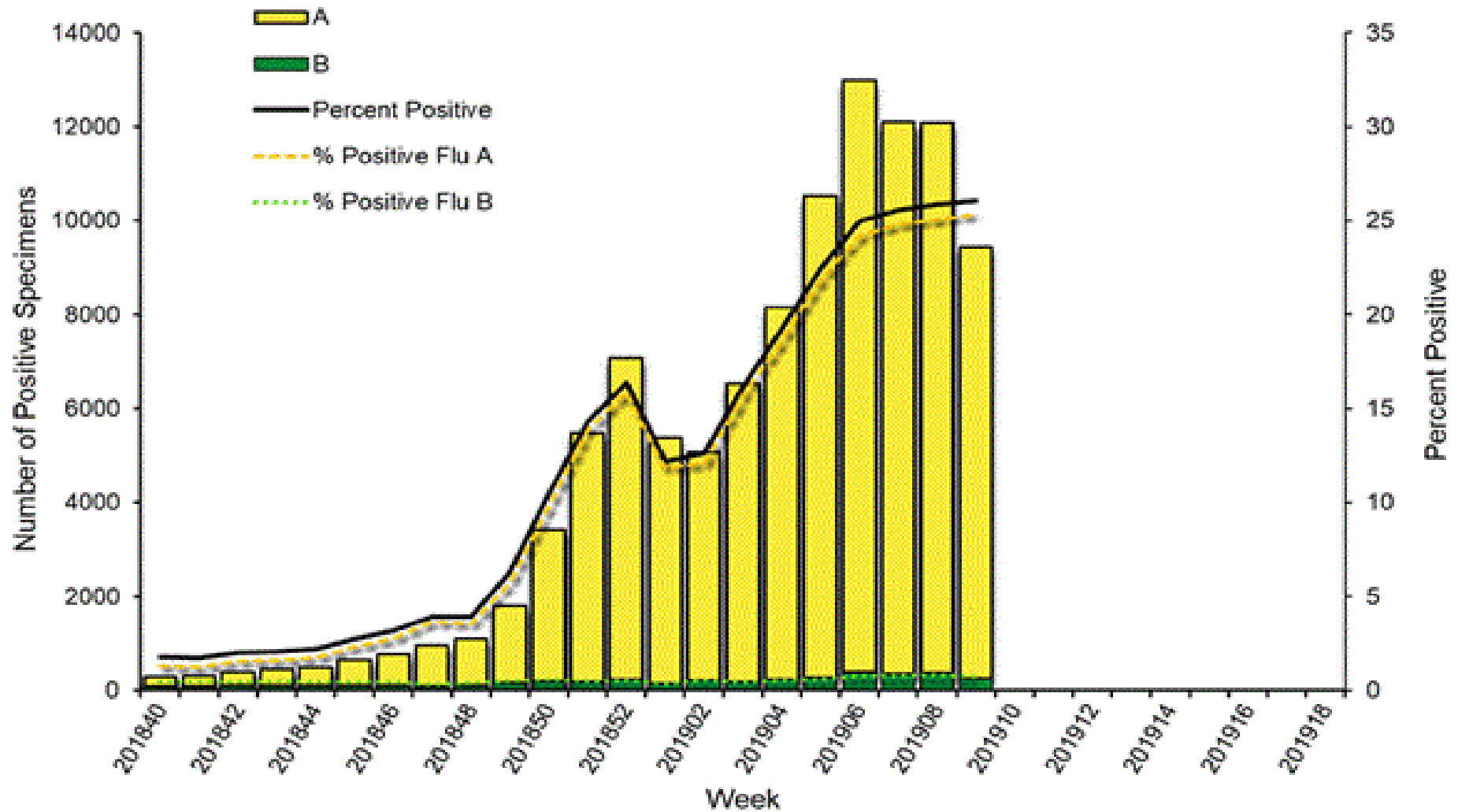
## Correlation between RPPNL (FLU PCR) and Sofia (FLUAG) - Accuracy 95.8%

In Jan/Feb two months 1585 samples were tested by both methods most of them negative, 86/152 samples were positive by EIA when confirmed by PCR. 66 negative EIA samples were tested positive by PCR method. *(ACL correlation data is compiled on samples collected within <48 h). Since positive rate is under-represented and provides correlation on very small fraction of positive samples – interpret clinical sensitivity with caution.*

Jan 1 2019 to Feb 23 2019				
FLUAG (Sofia) vs RPPNL (PCR) correlation				
		RPPNL		
		+	-	Total
FluAG	+	86	8	94
	-	66	1585	1651
		Total		1745
%				
56.6	Clinical Sensitivity			
99.5	Clinical Specificity			
91.5	Positive Predictive Value (PPV)			
96.0	Negative Predictive Value (NPV)			
95.8	Accuracy			

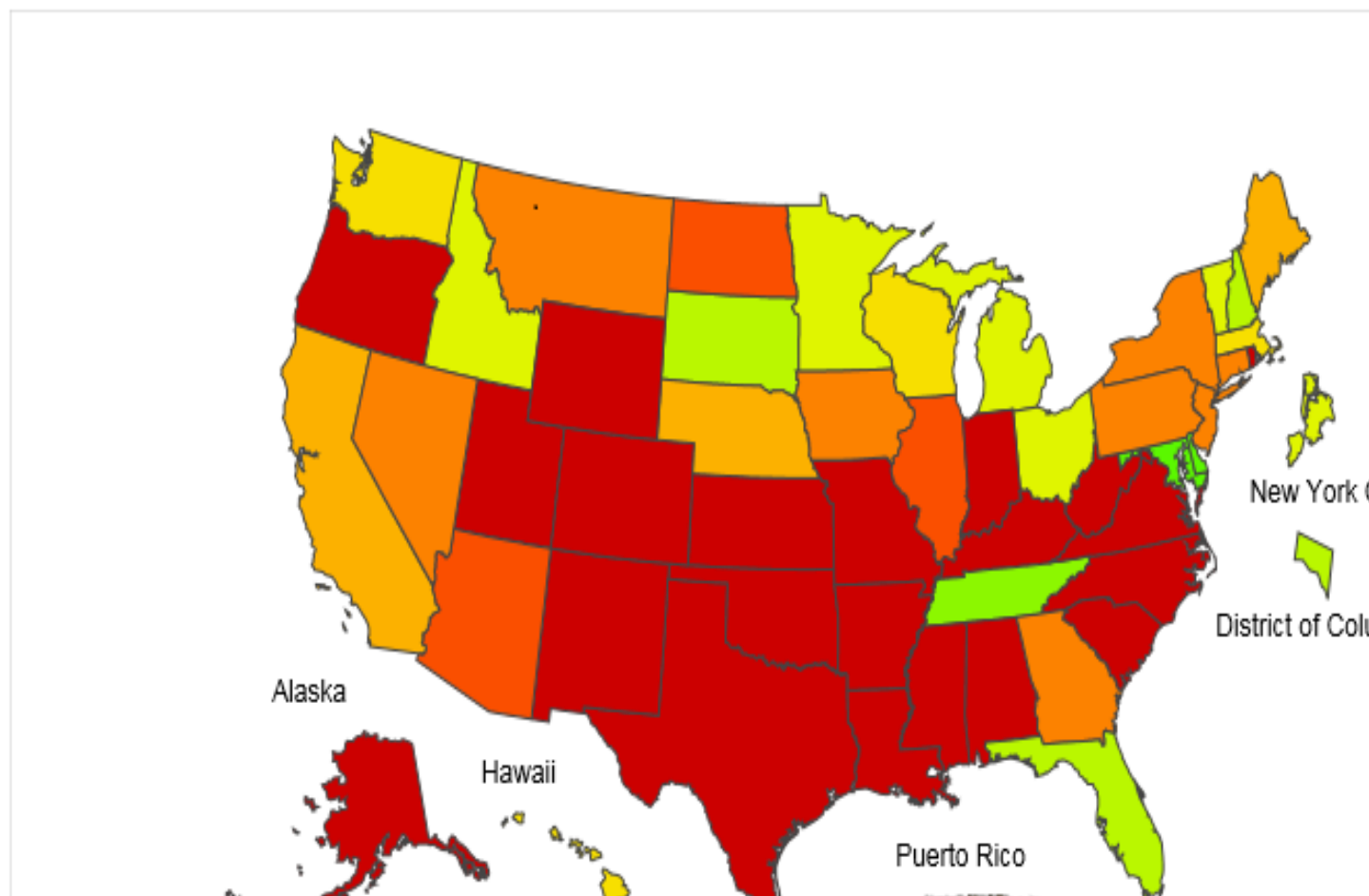
Mar 2, 2019 Positivity rate 26.1% - Flu A – 97% , Flu B – 3%

### Influenza Positive Tests Reported to CDC by U.S. Clinical Laboratories, National Summary, 2018-2019 Season





## 2018-19 Influenza Season Week 9 ending Mar 02, 2019



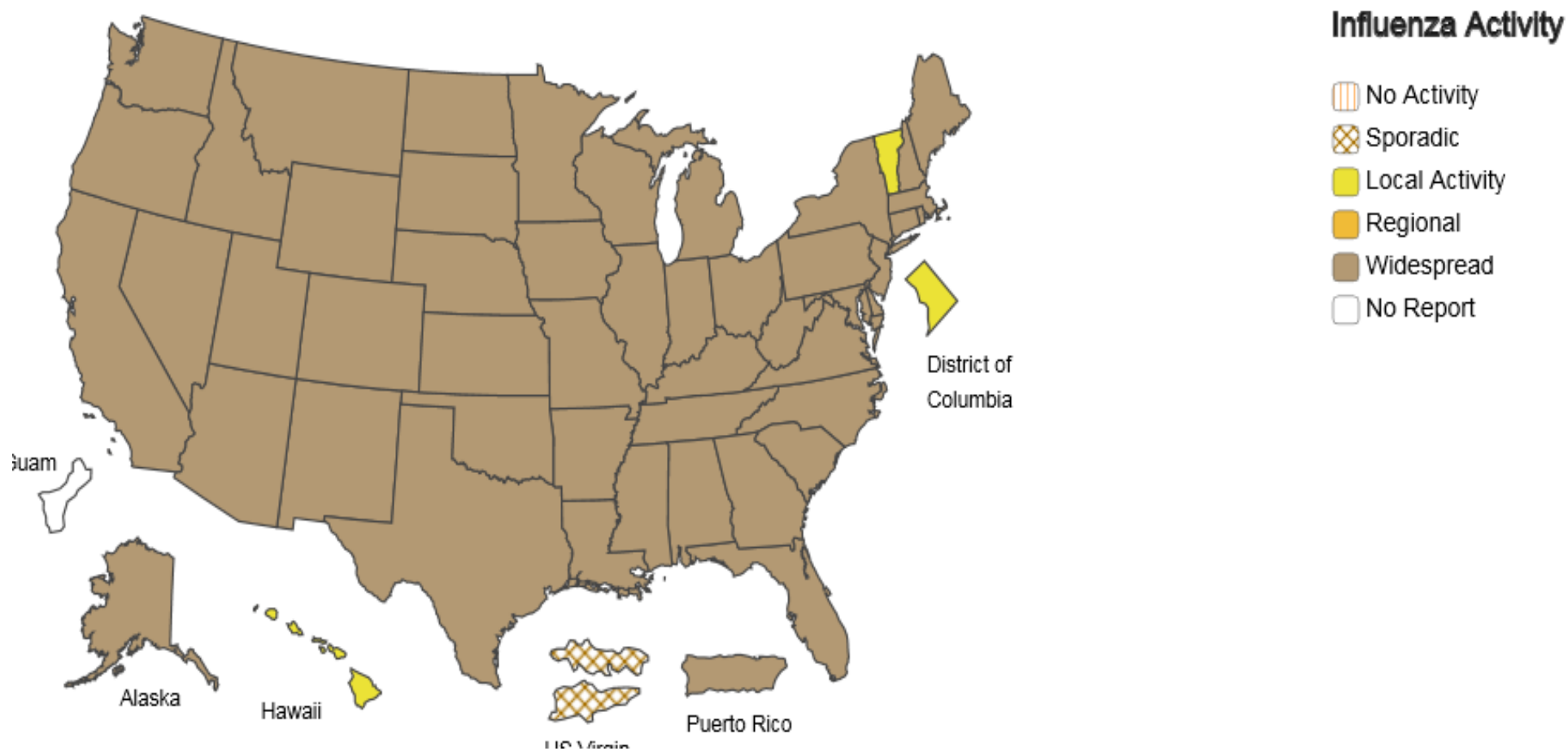
### ILI Activity



# A Weekly Influenza Surveillance Report Prepared by the Influenza Division

Weekly Influenza Activity Estimates Reported by State and Territorial Epidemiologists\*

Week Ending Mar 02, 2019 - Week 9

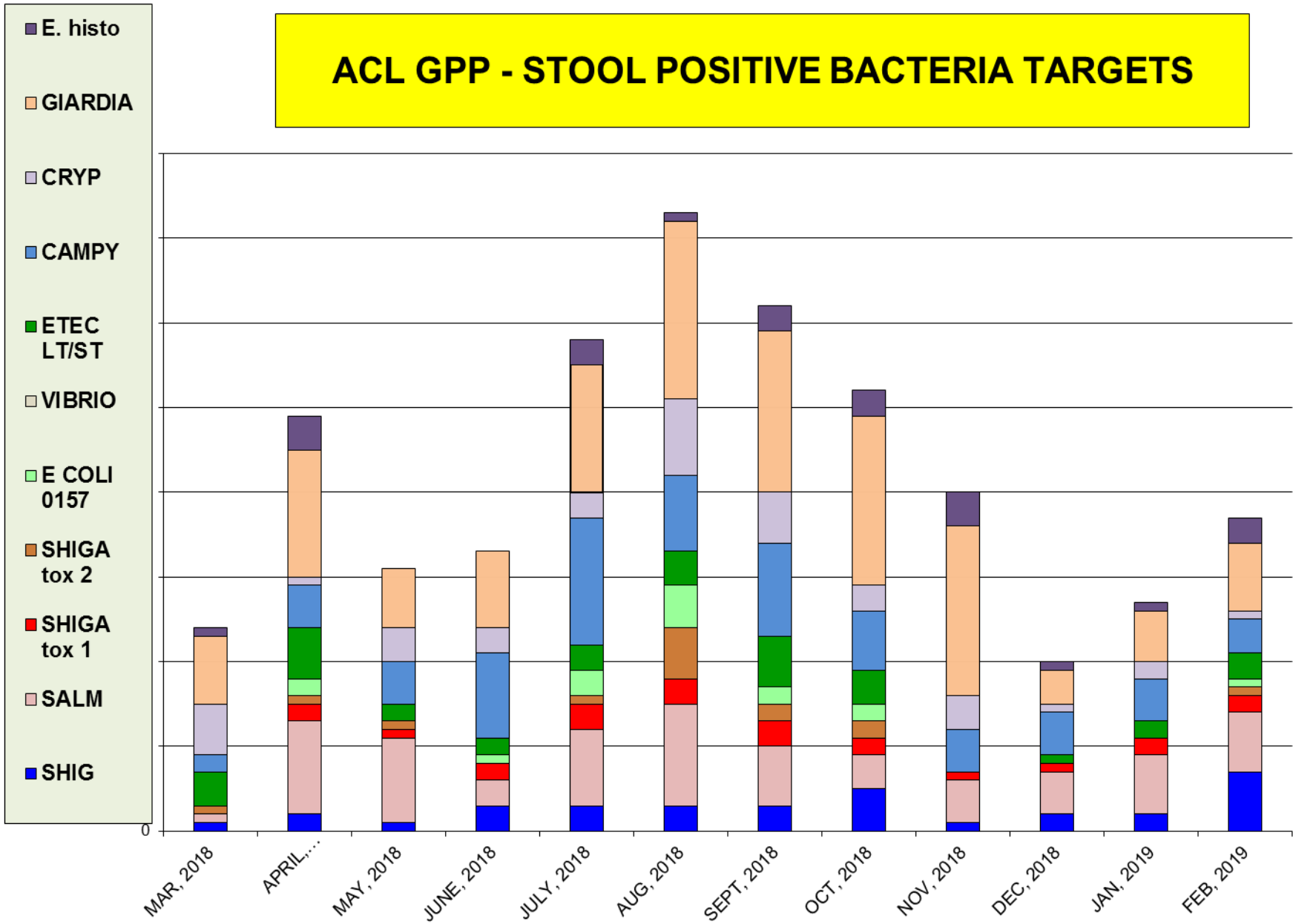




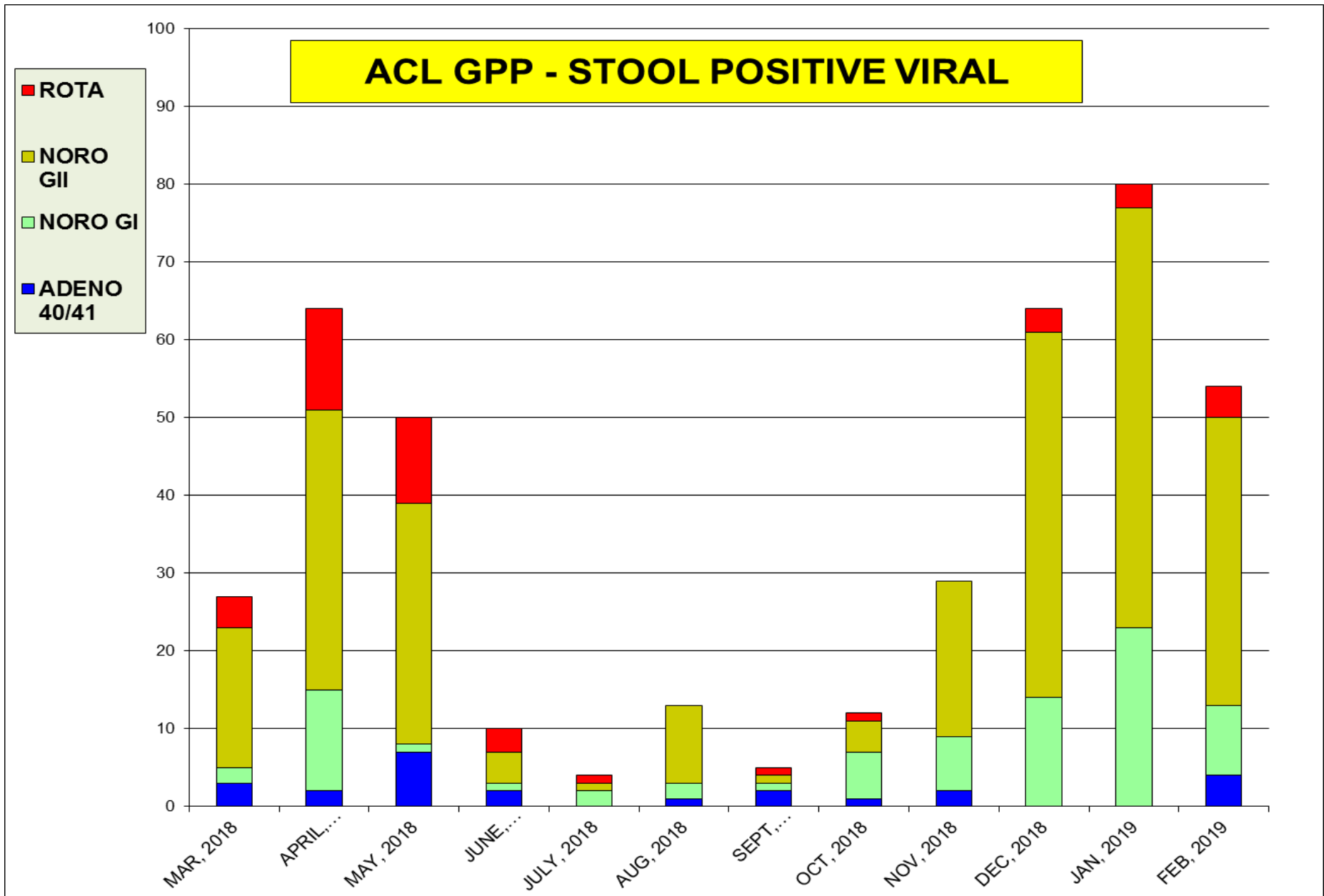


The most prevalent bacterial targets was **Salmonella** and **Giardia**

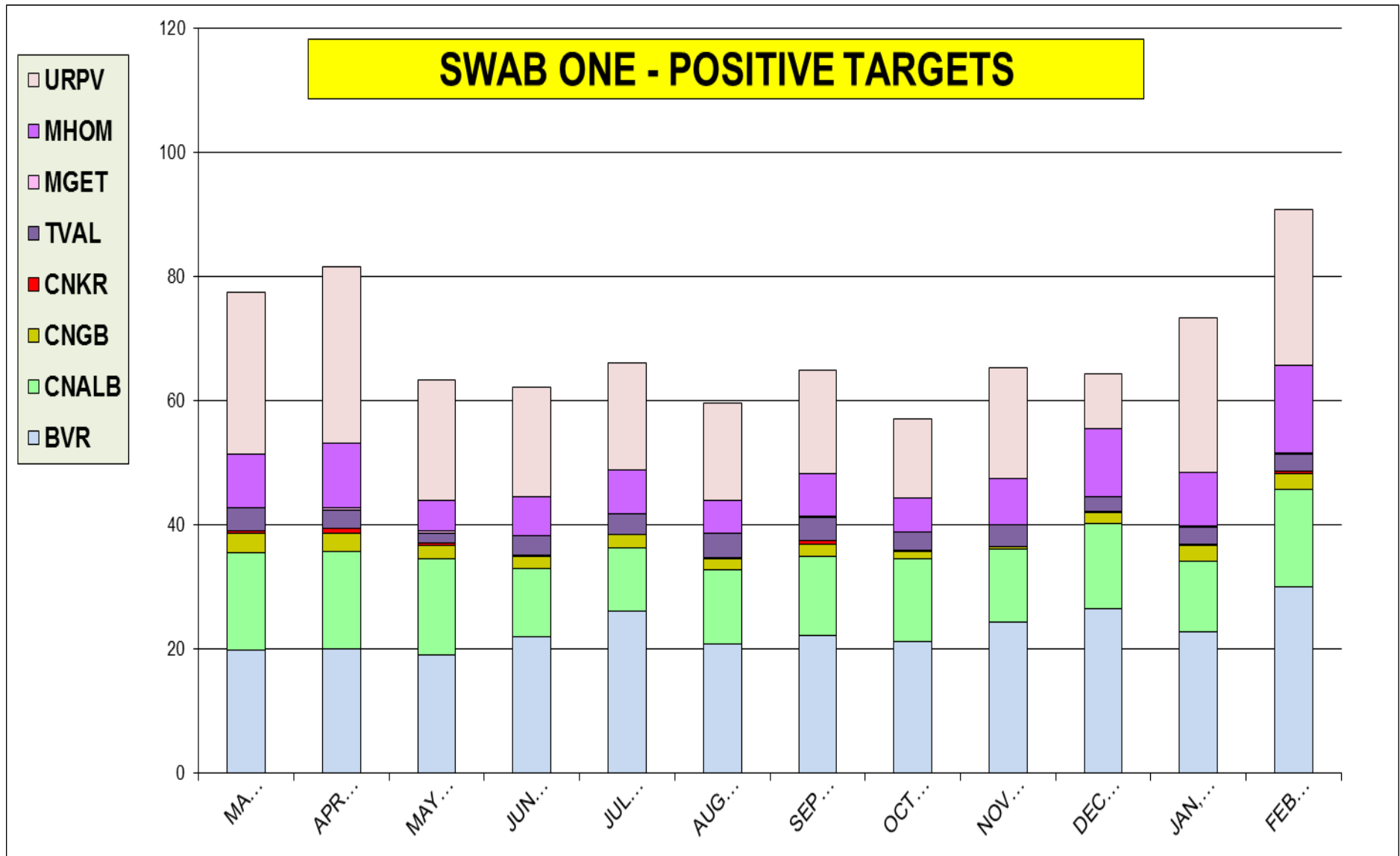
### ACL GPP - STOOL POSITIVE BACTERIA TARGETS



The most prevalent virus target was **Norovirus type I / II** 9.7 % pos. rate



BV	C.ALB	C.GLB	C.KUR	T.VAG	M.GEN	M.HOM	U.PAV	Tot. pos.
4,925	4,925	4,925	4,925	4,925	4,925	4,925	4,925	4,925
<b>23.3</b>	<b>13.1</b>	<b>2.0</b>	<b>0.3</b>	<b>3.0</b>	<b>0.1</b>	<b>8.1</b>	<b>19.1</b>	<b>69.1</b>



## Neuraminidase Inhibitors Resistance in samples collected – as of Mar 2, 2019

Per CDC website	Oseltamivir		Peramivir		Zanamivir	
	Virus Samples tested (n)	Resistant Viruses, (%)	Virus Samples tested (n)	Resistant Viruses, (%)	Virus Samples tested (n)	Resistant Viruses, (%)
Influenza A (H1N1)pdm09	<b>755</b>	<b>0.3</b>	<b>755</b>	<b>0.3</b>	<b>755</b>	<b>0</b>
Influenza A (H3N2)	<b>482</b>	<b>0</b>	<b>482</b>	<b>0</b>	<b>482</b>	<b>0</b>
Influenza B	<b>159</b>	<b>0</b>	<b>159</b>	<b>0</b>	<b>159</b>	<b>0</b>

***There is 0.3% resistance detected.***