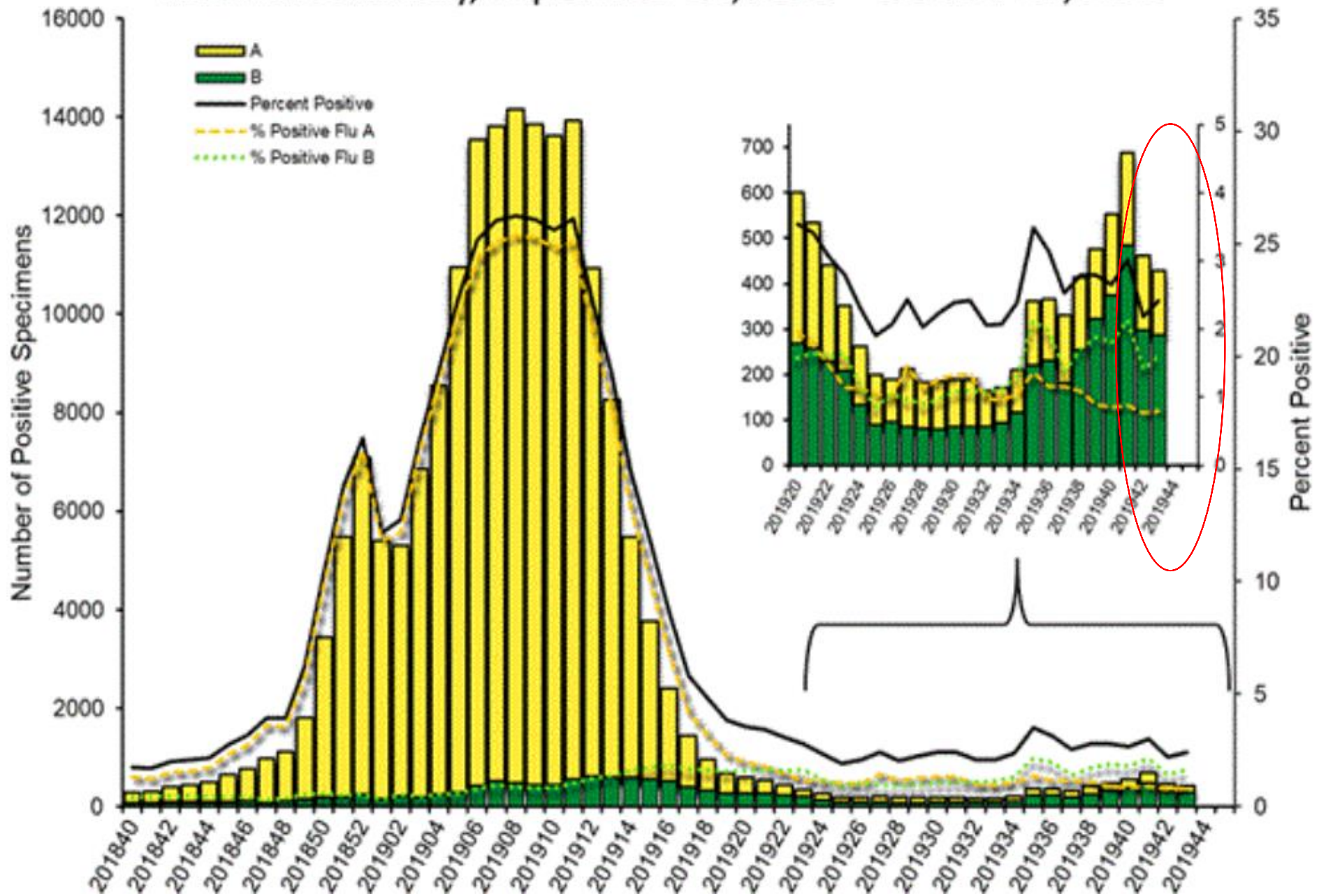


## Respiratory Pathogens - Nov 02 2019

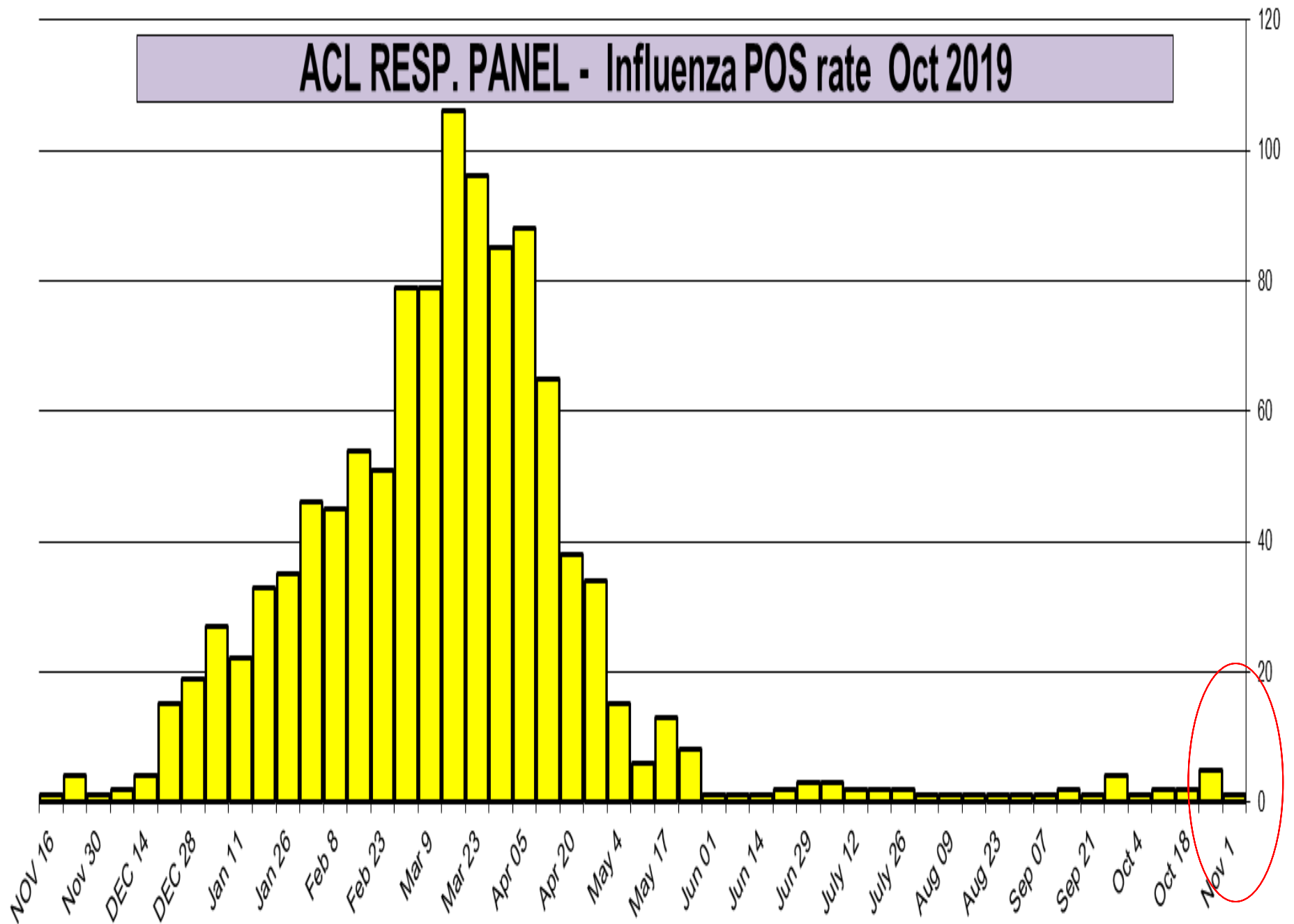
Week	InfA-H1	InfA-H3	2009 H1N1	Inf B	RSV	All Para	EV/ Rhino	Meta pneumo	Adeno	All Corona	Bocca	Myc. pneumo	Chlam. pneumo.	Legionella pneumo.	BP / BPP	Total Pos	POS FLU	Total	ACL %FLU	US %FLU	IL/WI PCR	AAH PCR
Nov 1	0	0	1	0	6	33	90	3	10	1	8	1	0	0	1	154	1	882	0.1	n/a	n/a	0.6
Oct 25	0	3	0	2	7	26	105	3	5	2	3	7	0	0	1	164	5	887	0.6	2.4	0.8	1.1
Oct 18	0	1	0	1	3	39	103	6	2	1	5	3	0	1	1	166	2	939	0.2	2.4	1.0	1.1
Oct 11	0	1	0	1	2	23	122	0	5	2	2	3	2	0	2	165	2	804	0.2	3.4	0.8	1.1
Oct 4	0	1	0	0	3	16	122	3	8	1	0	3	1	0	3	161	1	912	0.1	2.7	0.3	1.1
Sep 28	0	3	1	0	1	22	109	2	7	0	1	2	0	0	0	148	4	591	0.7	3.4	0.9	2.3
Sep 21	0	1	0	0	1	12	113	7	6	1	2	3	1	0	4	151	1	678	0.1	3.2	1.7	1.4
Sep 14	0	1	1	0	1	5	110	1	7	1	2	0	1	0	3	133	2	1091	0.2	3.0	2.6	2.6
Sep 07	0	1	0	0	0	7	73	5	6	0	4	0	0	0	1	97	1	615	0.2	3.2	0.9	2.6
Aug 31	0	1	0	0	1	4	39	1	3	1	0	4	1	1	1	56	1	775	0.1	3.5	0.7	1.3
Aug 23	0	1	0	0	1	8	42	1	2	6	3	2	5	0	0	71	1	393	0.3	3.2	0.7	1.2
Aug 16	0	0	1	0	1	5	31	4	5	1	1	0	1	0	1	50	1	655	0.2	2.3	0.2	1.7
Aug 09	0	1	0	0	0	5	29	1	5	2	0	0	1	1	1	44	1	629	0.2	2.1	0.2	0.0
Aug 2	0	1	0	0	2	10	46	4	6	0	1	0	0	1	0	70	1	758	0.1	2.4	0.9	2.0
July 26	0	2	0	0	1	6	36	10	1	1	2	3	0	2	2	62	2	504	0.4	2.4	0.4	3.7
July 19	0	2	0	0	0	18	38	9	8	2	3	0	1	1	3	81	2	491	0.4	2.3	1.0	5.6

Flu PCR  
% Rate

# Influenza Positive Tests Reported to CDC by U.S. Clinical Laboratories, National Summary, September 30, 2018 – October 26, 2019



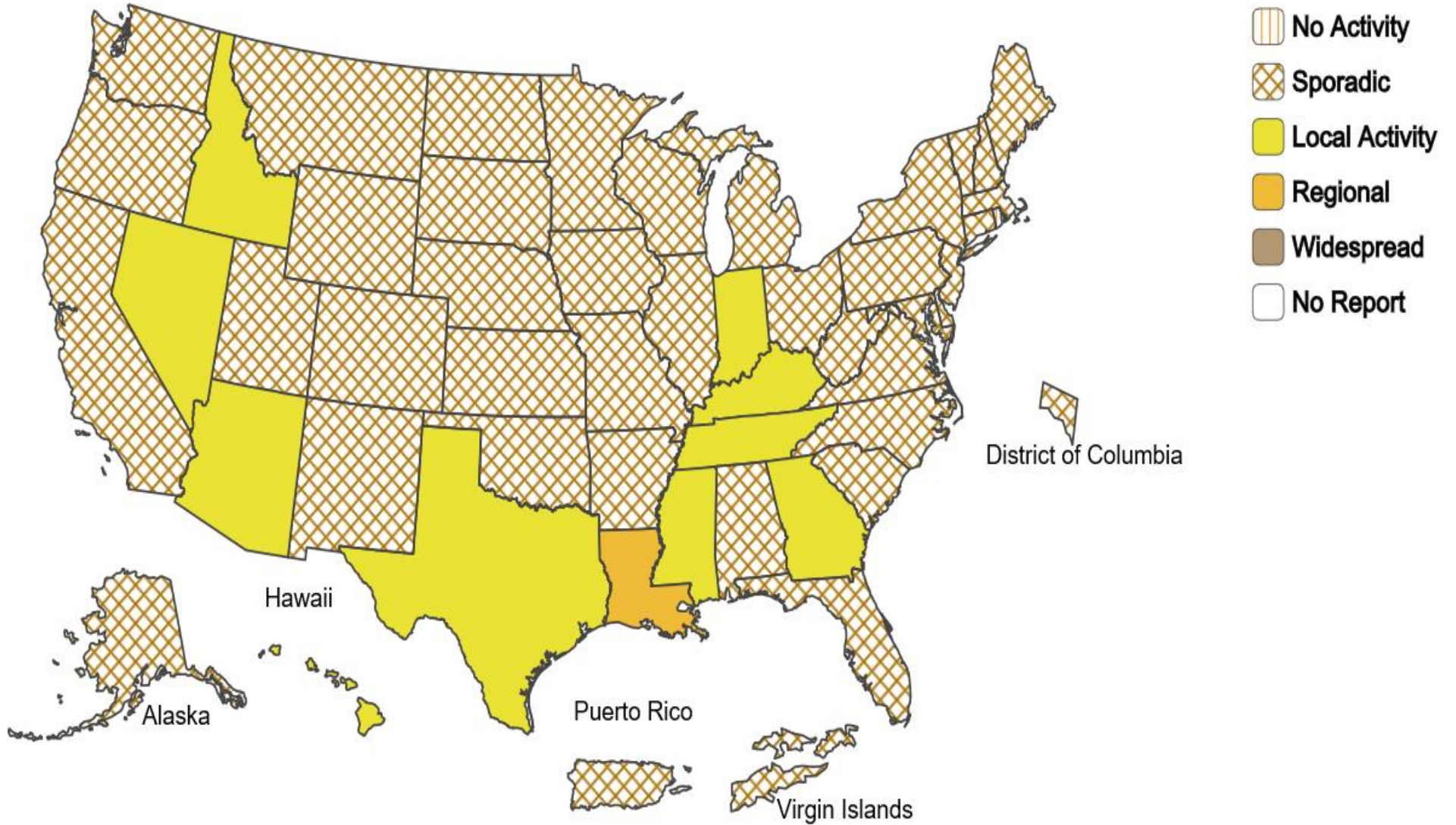
# ACL RESP. PANEL - Influenza POS rate Oct 2019





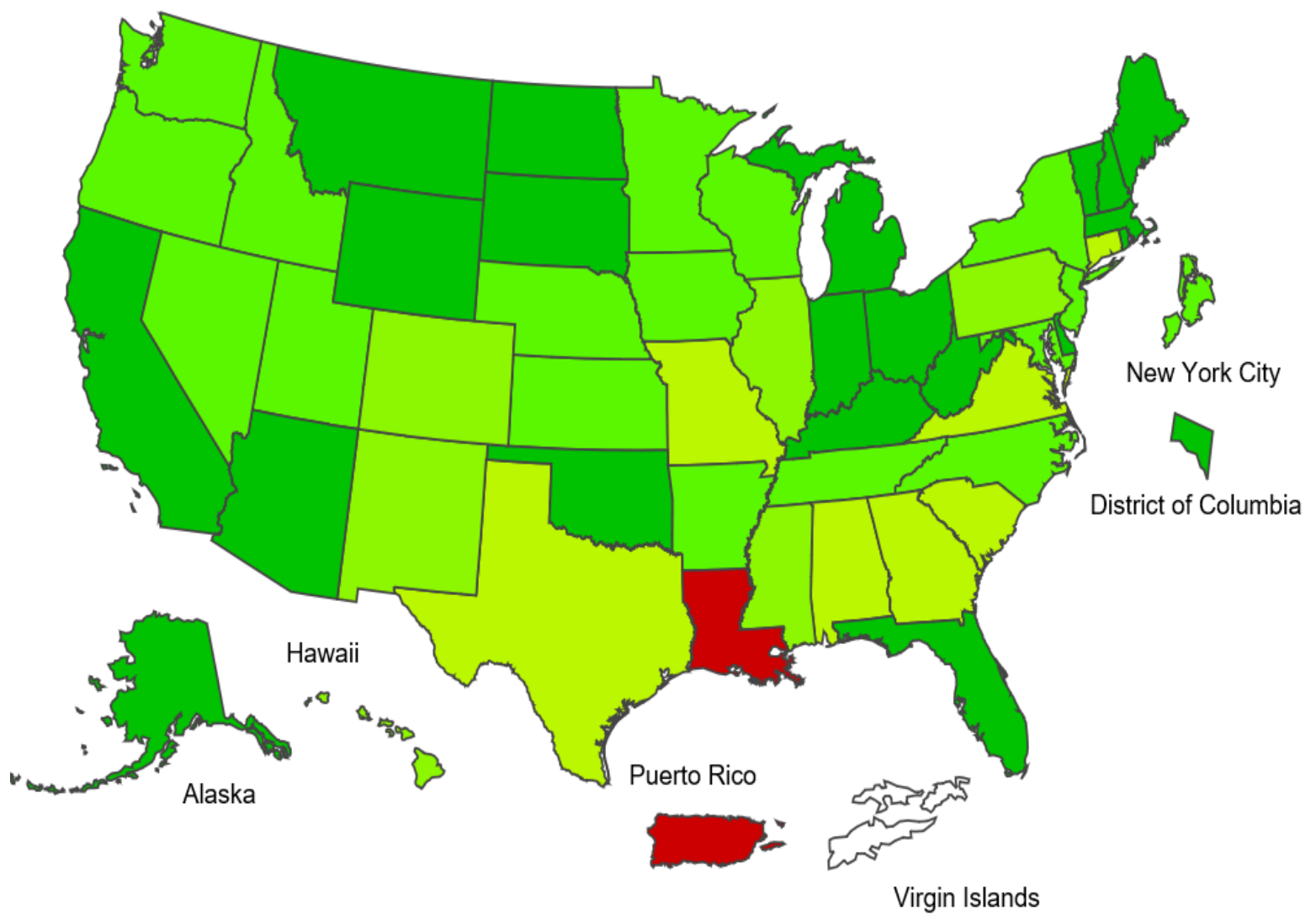
Week Ending Oct 26, 2019 - Week 43

Influenza Activity



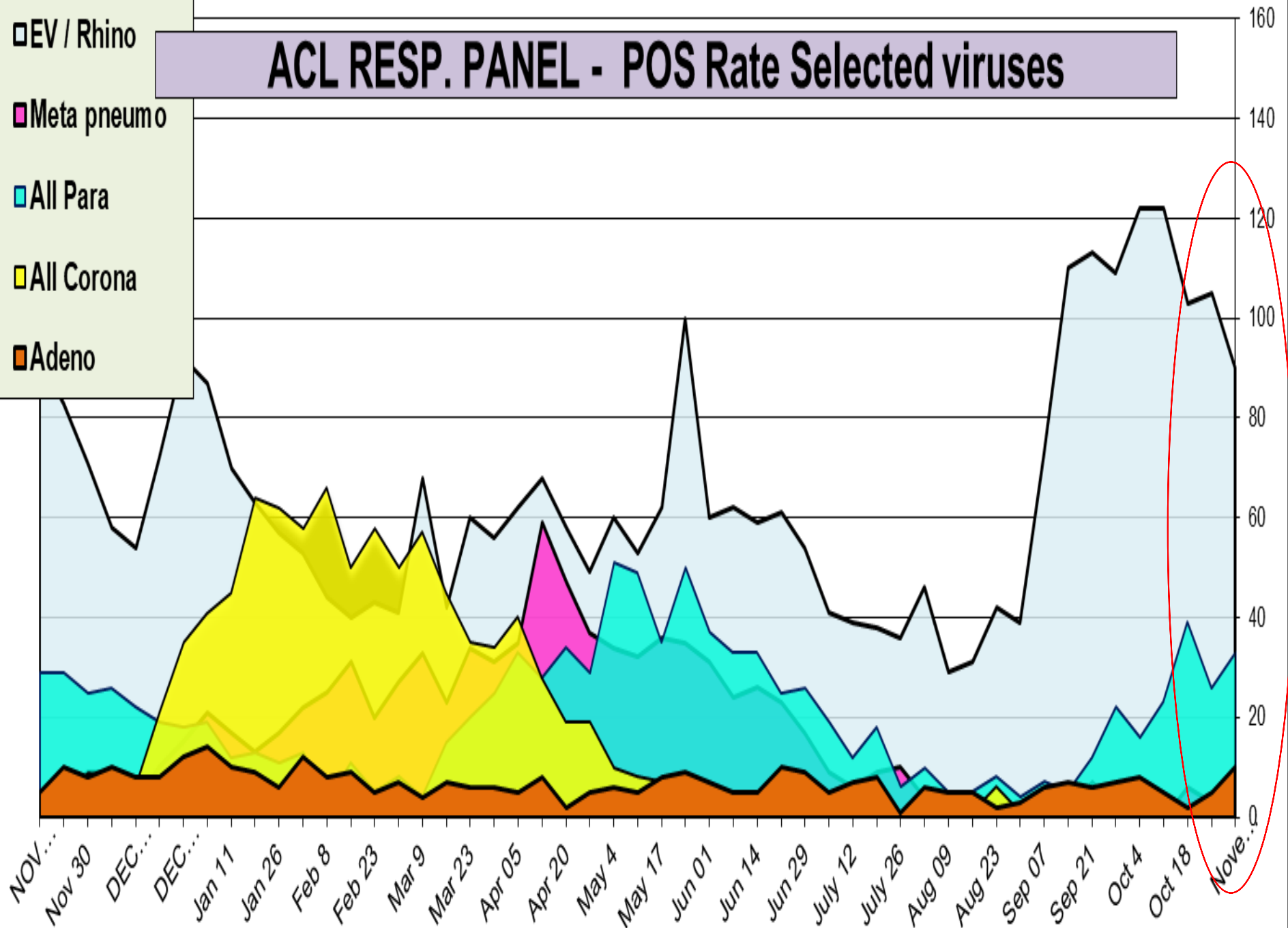
2019-20 Influenza Season Week 43 ending Oct 26, 2019

ILI Activity Level

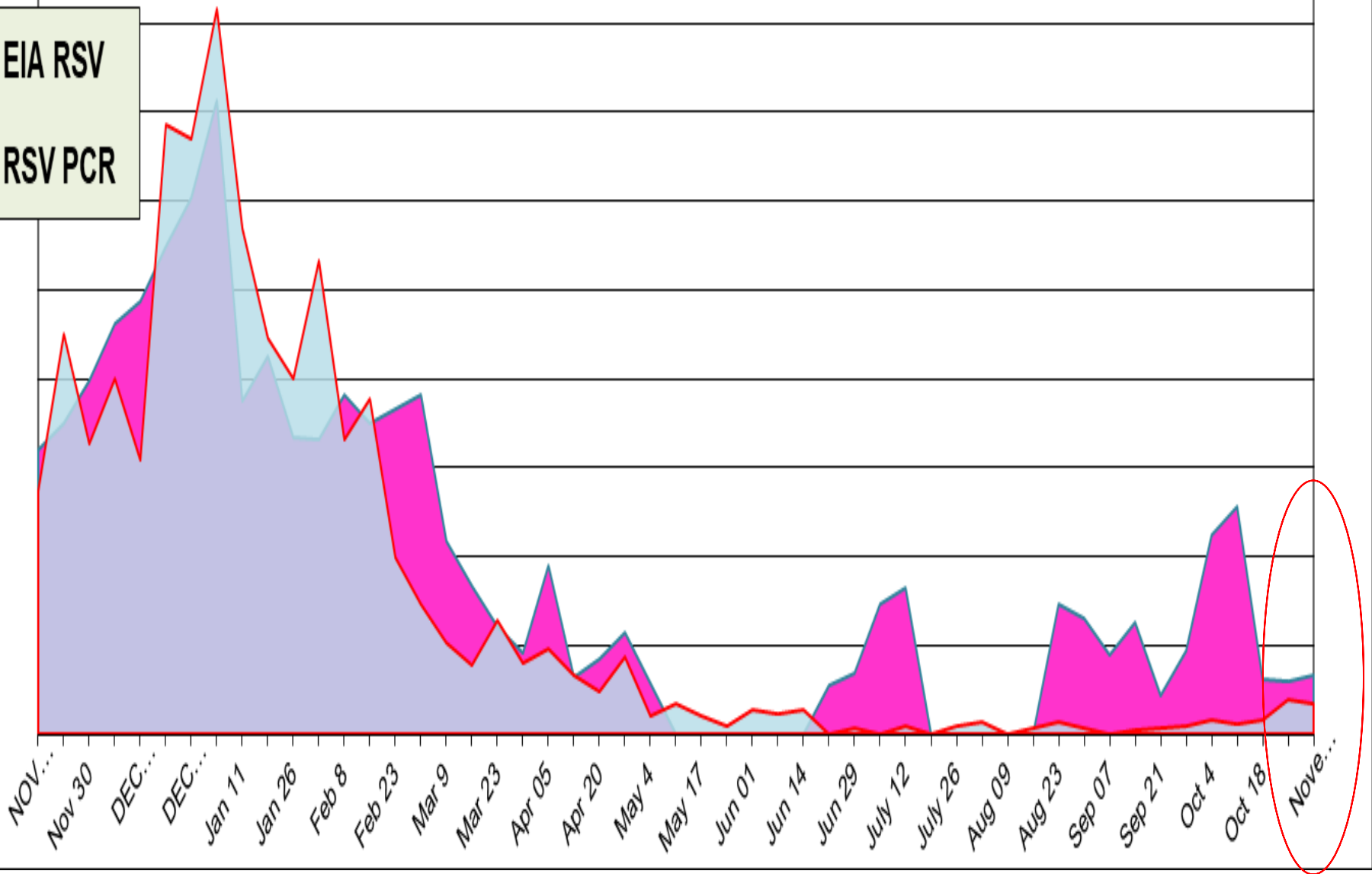
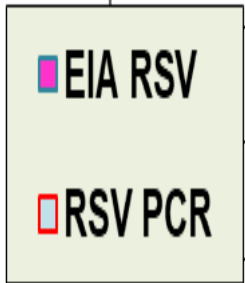


# ACL RESP. PANEL - POS Rate Selected viruses

- EV / Rhino
- Meta pneumo
- All Para
- All Corona
- Adeno

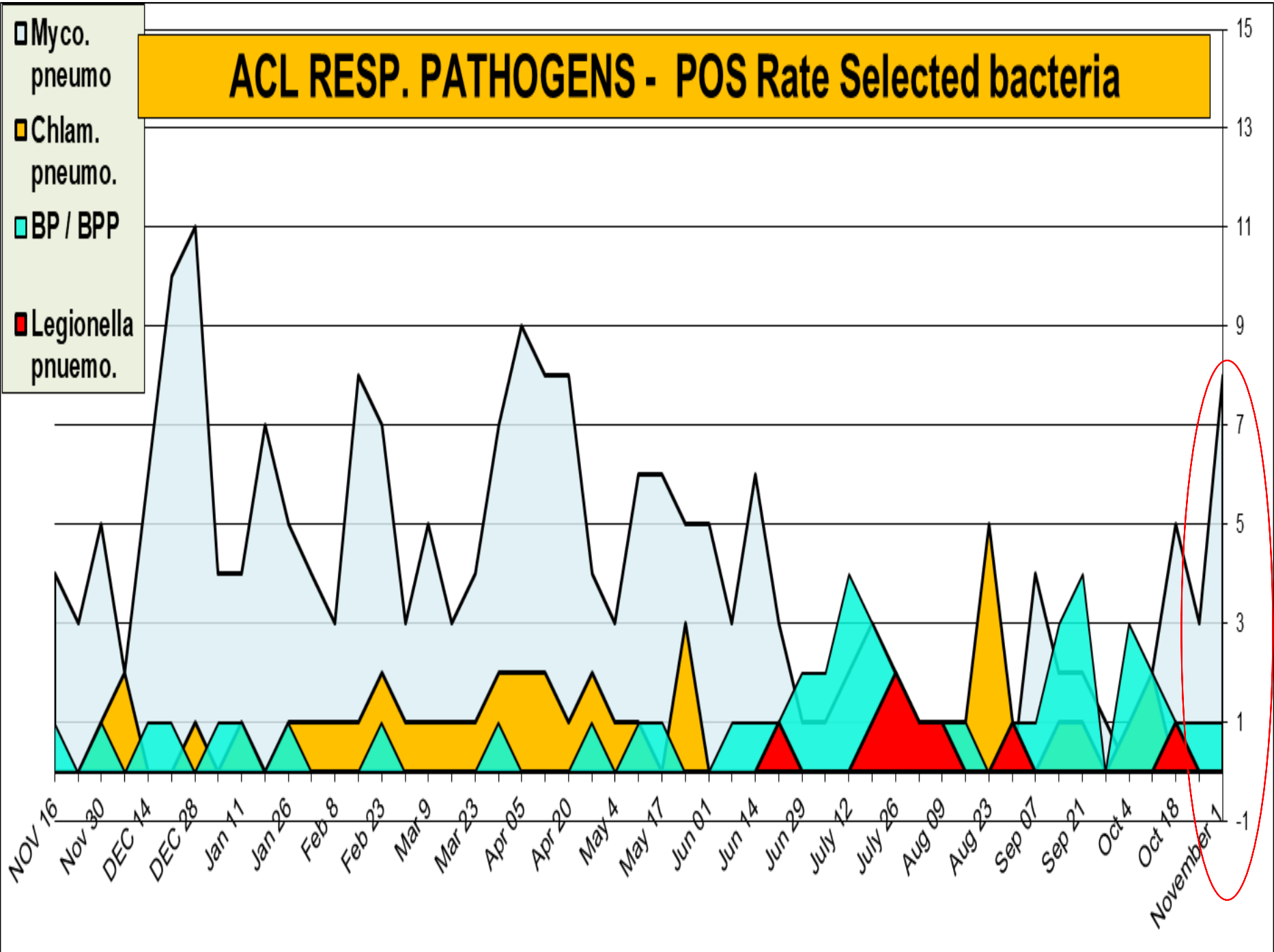


# ACL RESP. PANEL - RSV PCR - 0.7%, RSV EIA - 1.3%



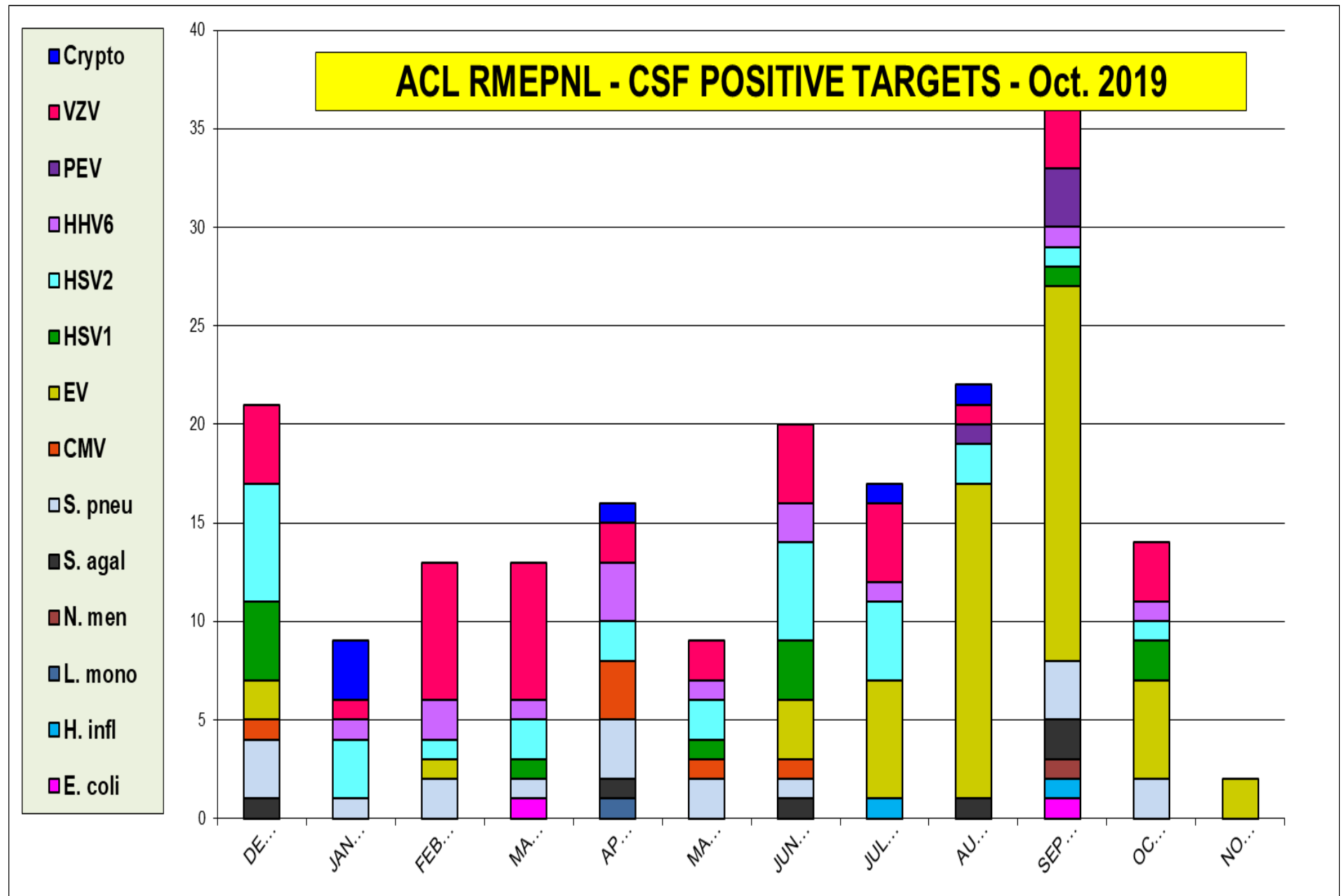
# ACL RESP. PATHOGENS - POS Rate Selected bacteria

- Myco. pneumo
- Chlam. pneumo.
- BP / BPP
- Legionella pneumo.

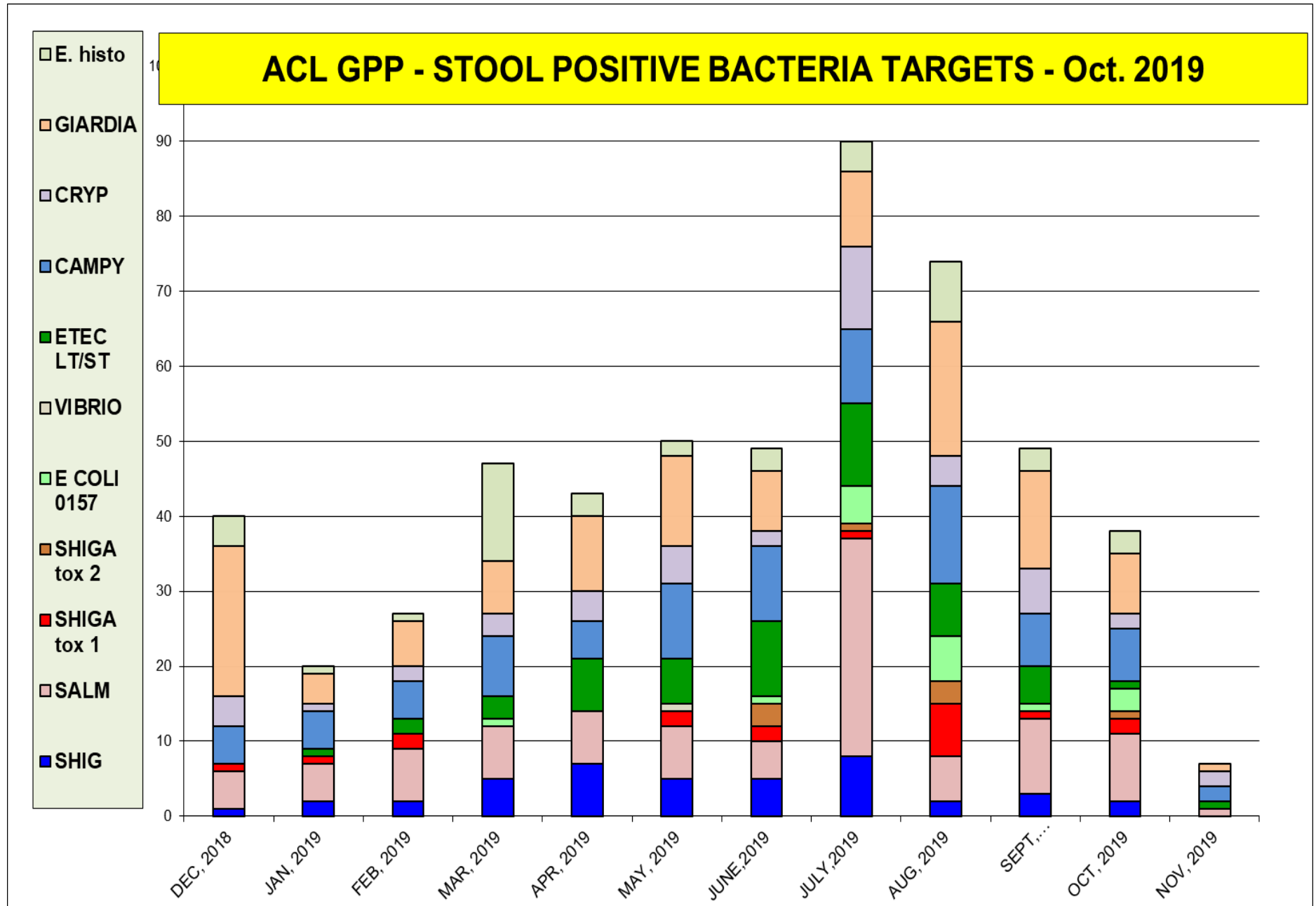




The most prevalent targets is Enterovirus (all viruses pos rate 2.6%)

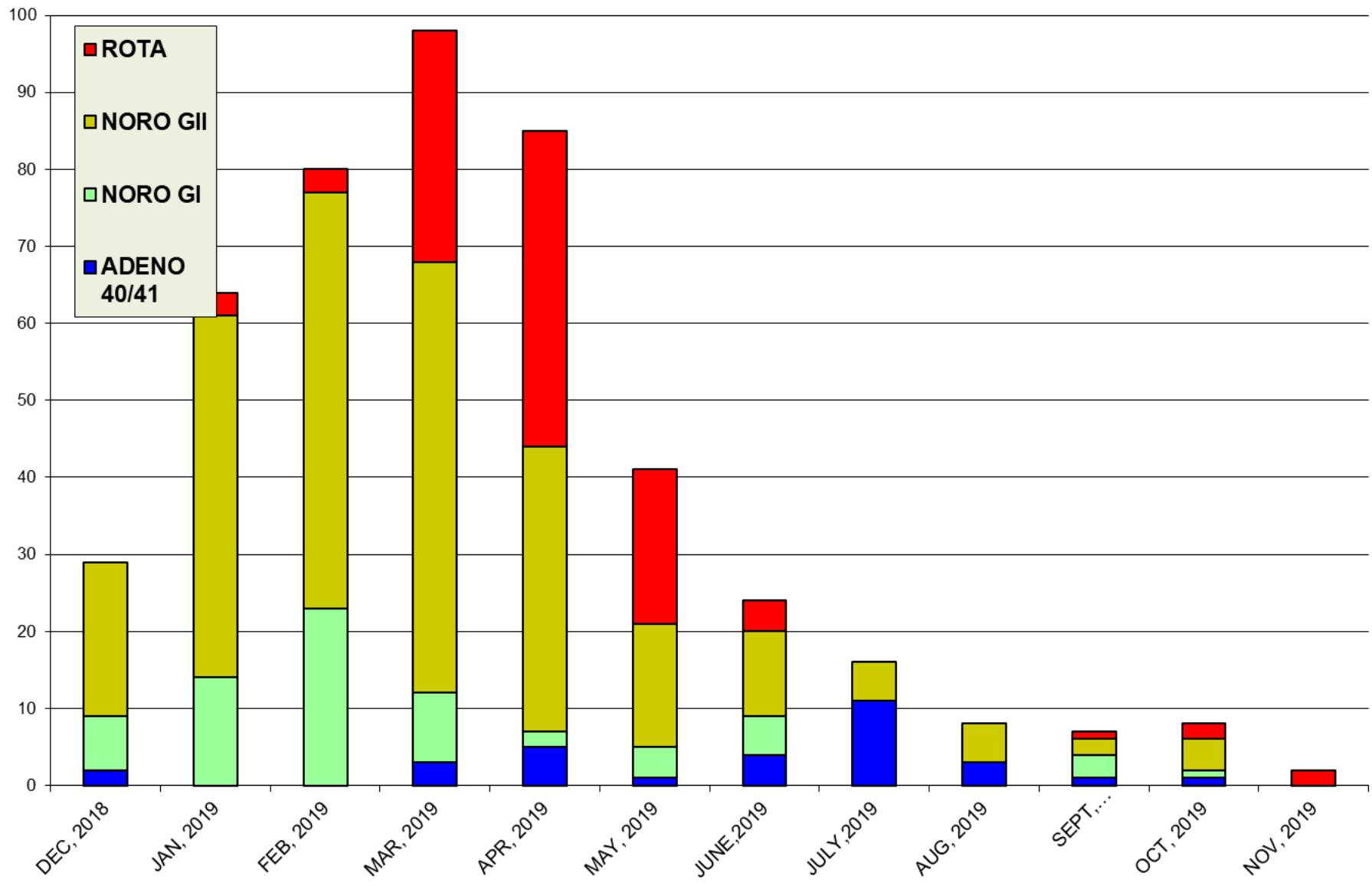


The most prevalent bacterial targets are **Giardia**, **Salmonella**



The most prevalent virus target is **Norovirus**

### ACL GPP - STOOL POSITIVE VIRAL TARGETS - Oct. 2019



BV	C.alb	C.glab	C. kru	T.vag	M.gen	M.hom	U.prv	Tot. pos.
4,794	4,794	4,794	4,794	4,794	4,794	4,794	4,794	4,794
<b>23.2</b>	<b>16.1</b>	<b>2.3</b>	<b>0.4</b>	<b>3.2</b>	<b>1.2</b>	<b>10.8</b>	<b>27.8</b>	<b>85.0</b>

