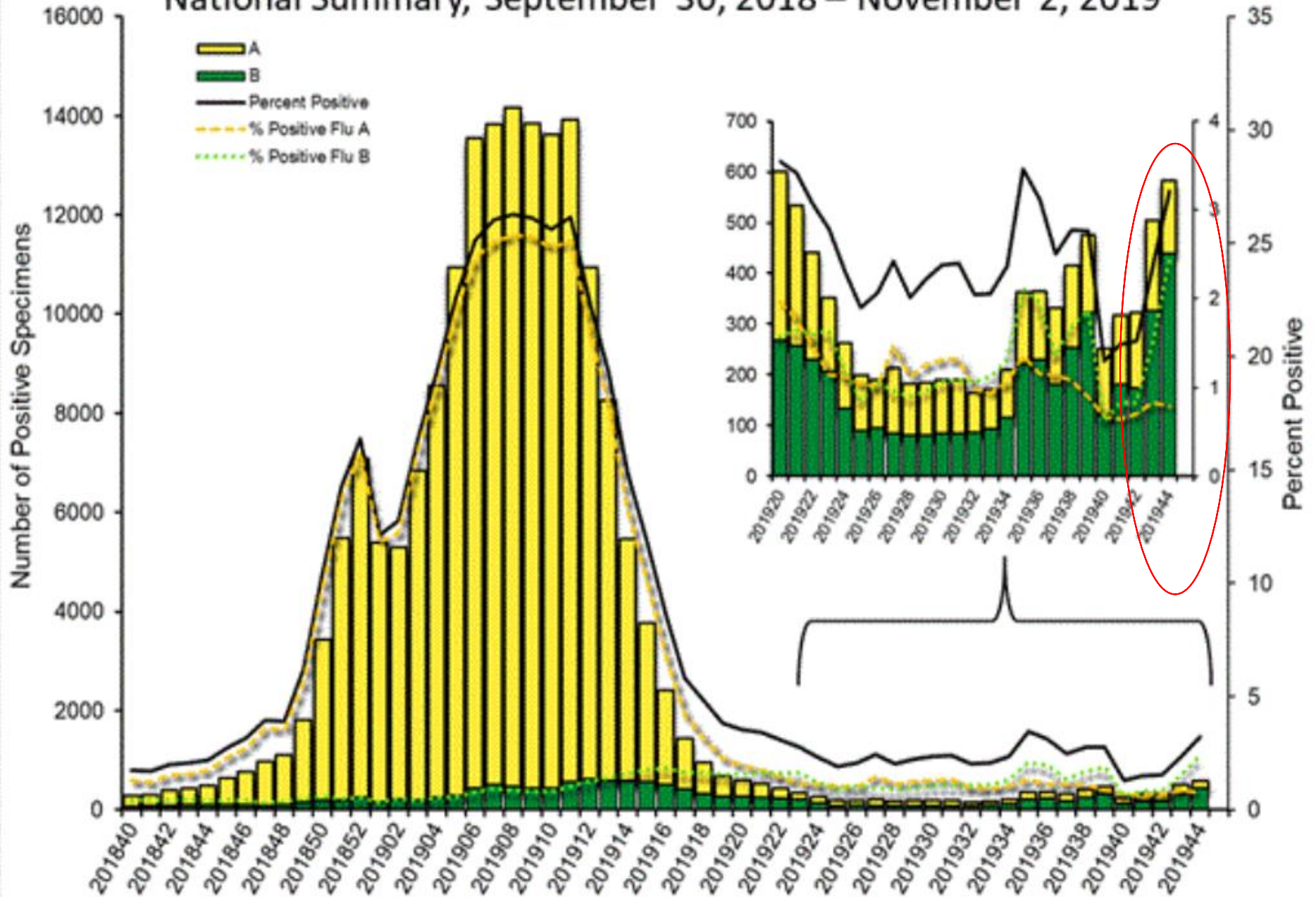


Respiratory Pathogens - Nov 16 2019

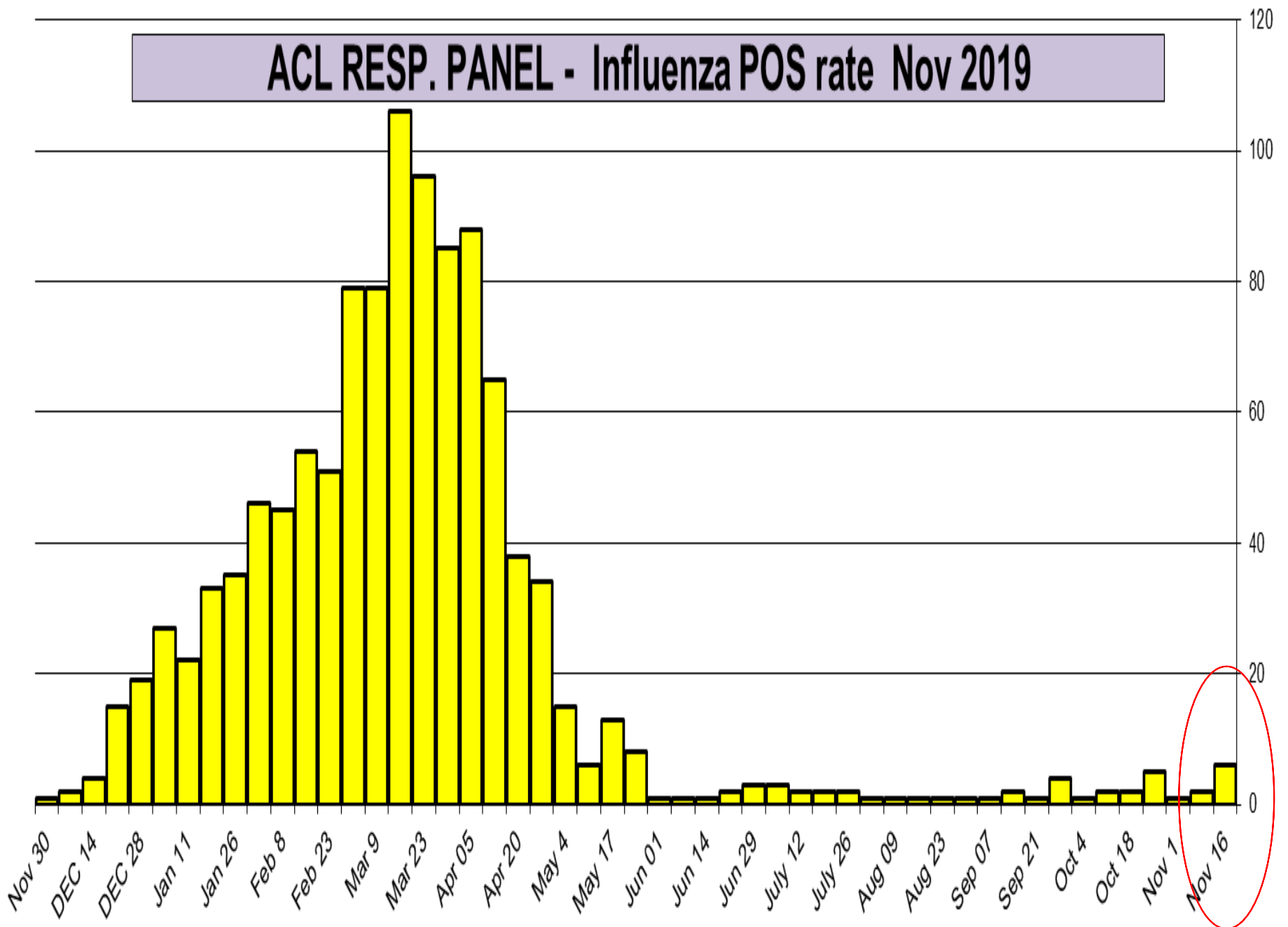
Week	InfA-H1	InfA-H3	2009 H1N1	Inf B	RSV	All Para	EV / Rhino	Meta pneumo	Adeno	All Corona	Bocca	Myc. pneumo	Chlam. pneumo.	Legionella pneumo.	BP / BPP	Total Pos	POS FLU	Total	ACL RPPNL	US %FLU	IL/MI PCR	ACL FLUPCR
Nov 16	0	1	0	5	17	28	81	6	14	3	7	3	0	0	2	167	6	1004	0.6	n/a	n/a	3.3
Nov 9	0	2	0	0	8	16	76	6	9	1	7	4	0	0	3	132	2	844	0.2	n/a	n/a	2.8
Nov 1	0	0	1	0	6	33	90	3	10	1	8	1	0	0	1	154	1	882	0.1	3.2	0.9	0.0
Oct 25	0	3	0	2	7	26	105	3	5	2	3	7	0	0	1	164	5	887	0.6	2.4	0.9	0.0
Oct 18	0	1	0	1	3	39	103	6	2	1	5	3	0	1	1	166	2	939	0.2	1.5	1.2	1.2
Oct 11	0	1	0	1	2	23	122	0	5	2	2	3	2	0	2	165	2	804	0.2	1.5	0.1	0.9
Oct 4	0	1	0	0	3	16	122	3	8	1	0	3	1	0	3	161	1	912	0.1	1.3	0.3	1.1
Sep 28	0	3	1	0	1	22	109	2	7	0	1	2	0	0	0	148	4	591	0.7	1.0	0.9	2.3
Sep 21	0	1	0	0	1	12	113	7	6	1	2	3	1	0	4	151	1	678	0.1	1.0	1.7	1.4
Sep 14	0	1	1	0	1	5	110	1	7	1	2	0	1	0	3	133	2	1091	0.2	1.0	2.6	2.6
Sep 07	0	1	0	0	0	7	73	5	6	0	4	0	0	0	1	97	1	615	0.2	1.0	0.9	2.6
Aug 31	0	1	0	0	1	4	39	1	3	1	0	4	1	1	1	56	1	775	0.1	1.0	0.7	1.3
Aug 23	0	1	0	0	1	8	42	1	2	6	3	2	5	0	0	71	1	393	0.3	1.0	0.7	1.2
Aug 16	0	0	1	0	1	5	31	4	5	1	1	0	1	0	1	50	1	655	0.2	1.0	0.2	1.7
Aug 09	0	1	0	0	0	5	29	1	5	2	0	0	1	1	1	44	1	629	0.2	2.1	0.2	0.0
Aug 2	0	1	0	0	2	10	46	4	6	0	1	0	0	1	0	70	1	758	0.1	2.4	0.9	2.0

Flu PCR
% Rate

Influenza Positive Tests Reported to CDC by U.S. Clinical Laboratories, National Summary, September 30, 2018 – November 2, 2019



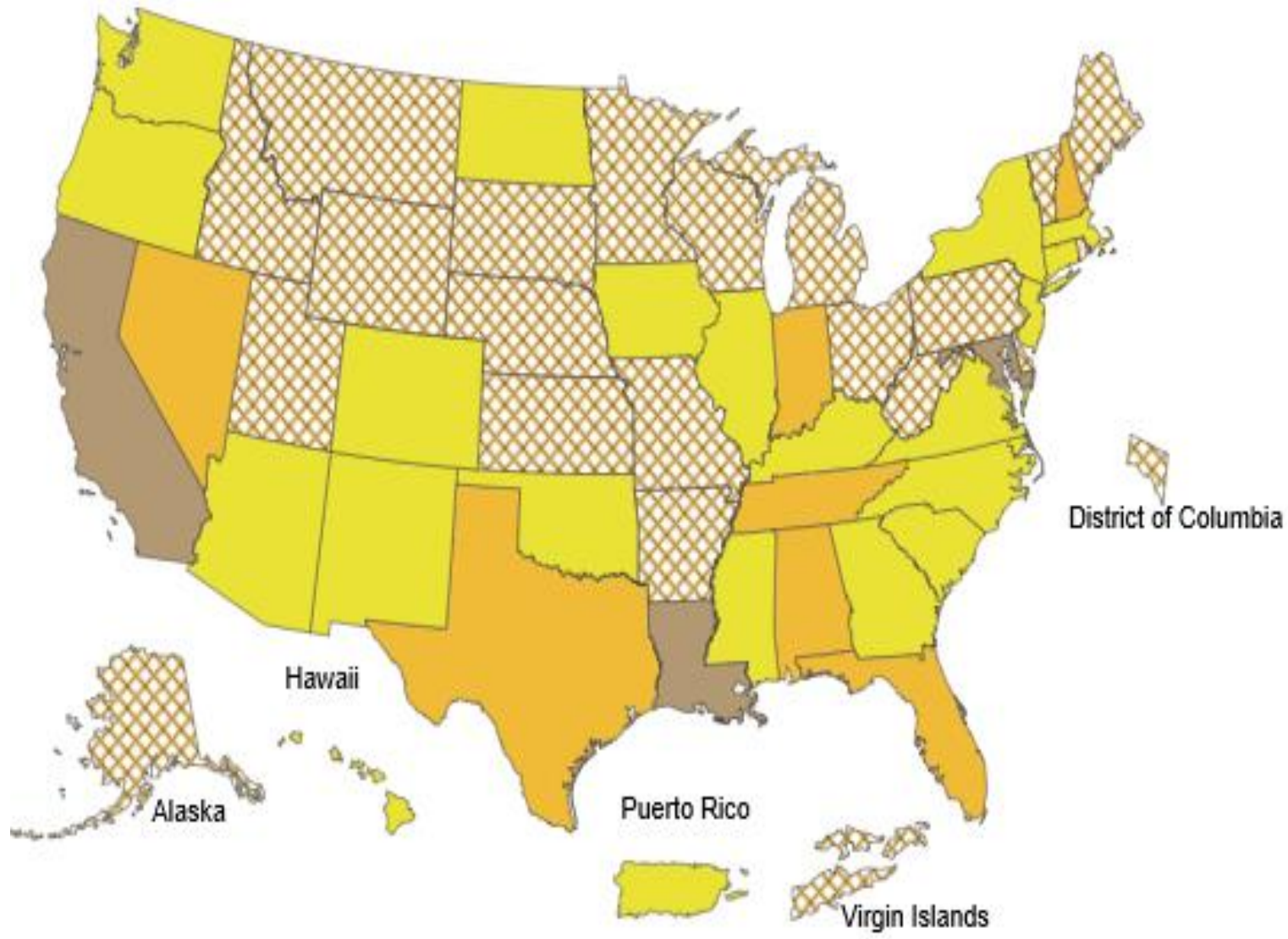
ACL RESP. PANEL - Influenza POS rate Nov 2019



Week Ending Nov 09, 2019 - Week 45

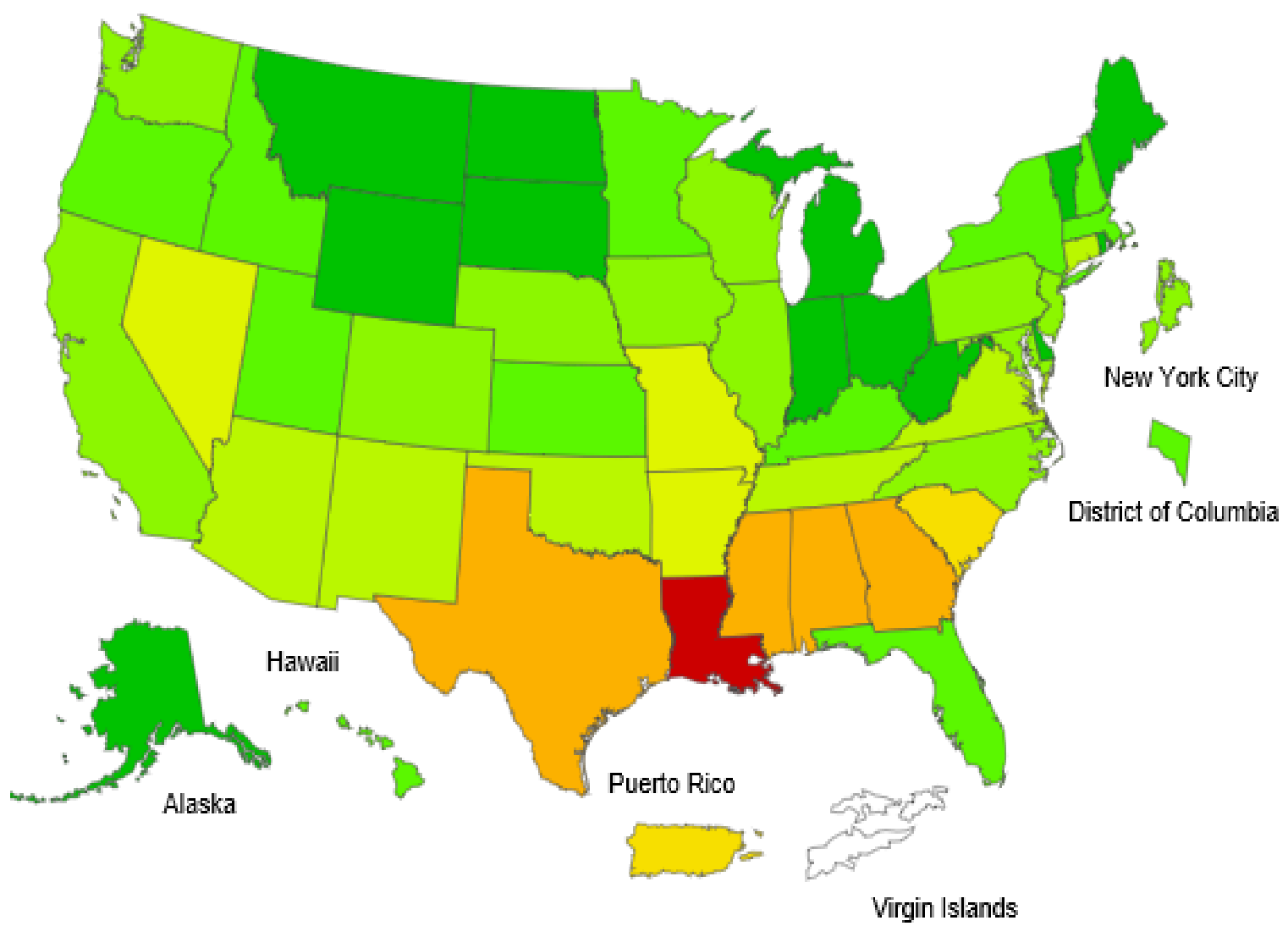
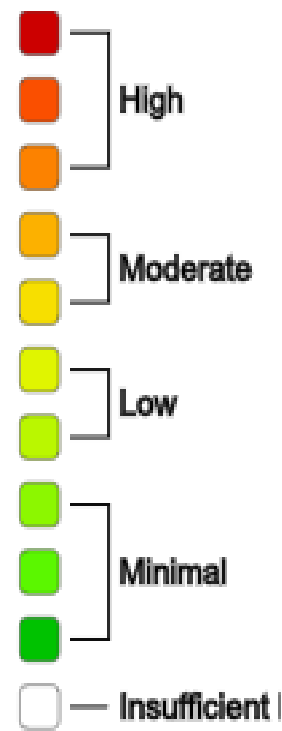
Influenza Activity E

- No Activity
- Sporadic
- Local Activity
- Regional
- Widespread
- No Report



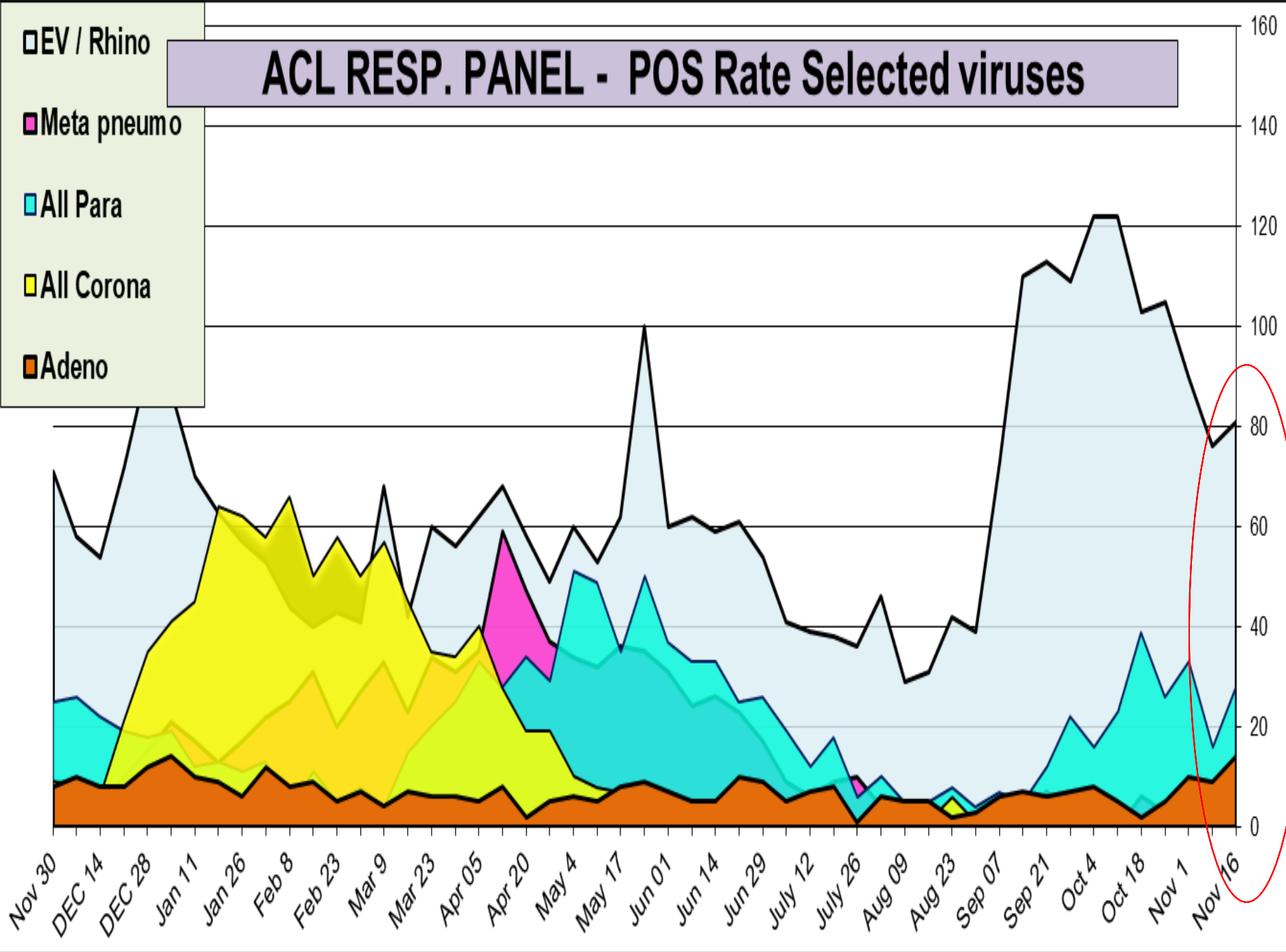
2019-20 Influenza Season Week 45 ending Nov 09, 2019

ILI Activity Level



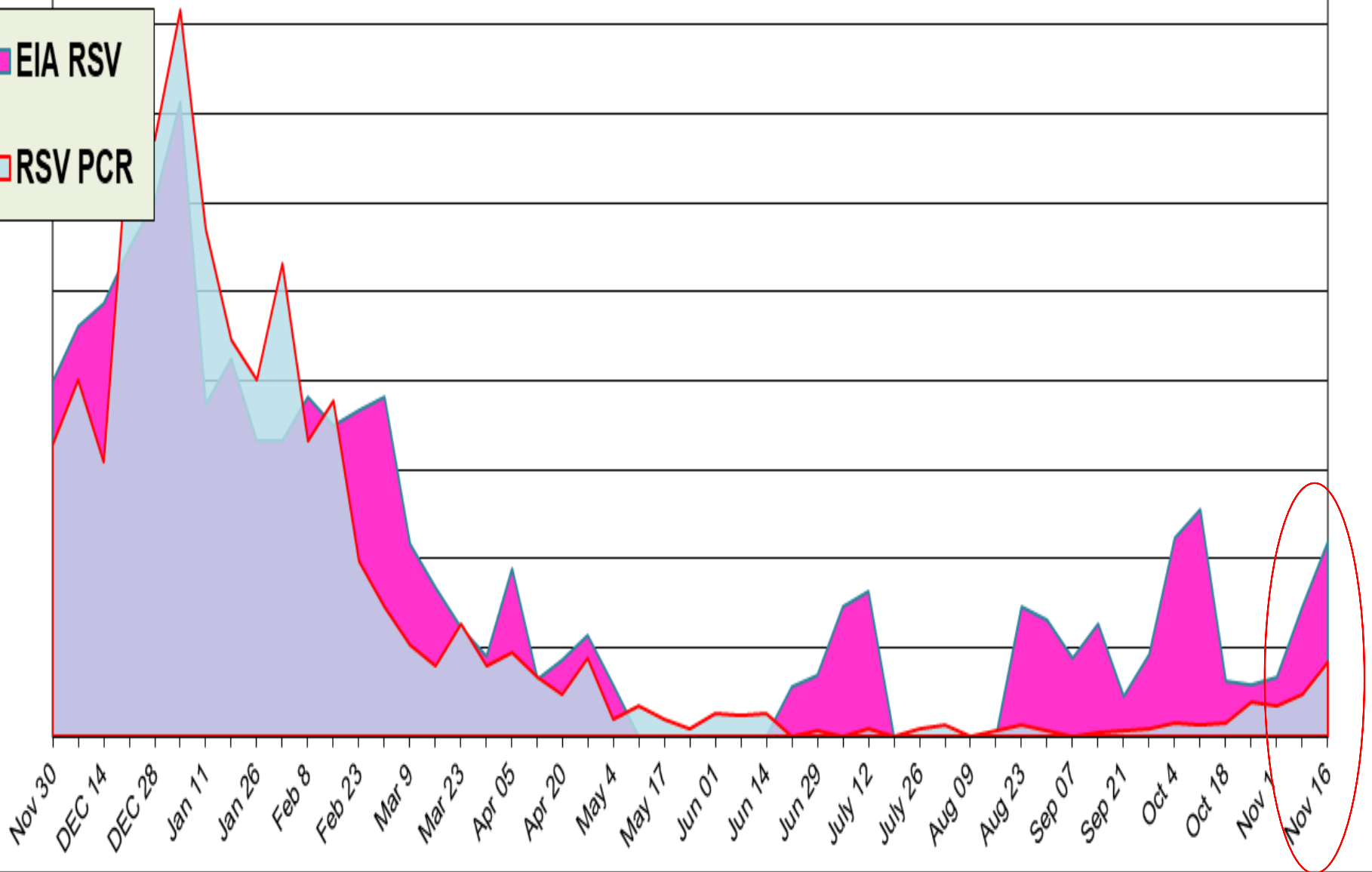
ACL RESP. PANEL - POS Rate Selected viruses

- EV / Rhino
- Meta pneumo
- All Para
- All Corona
- Adeno



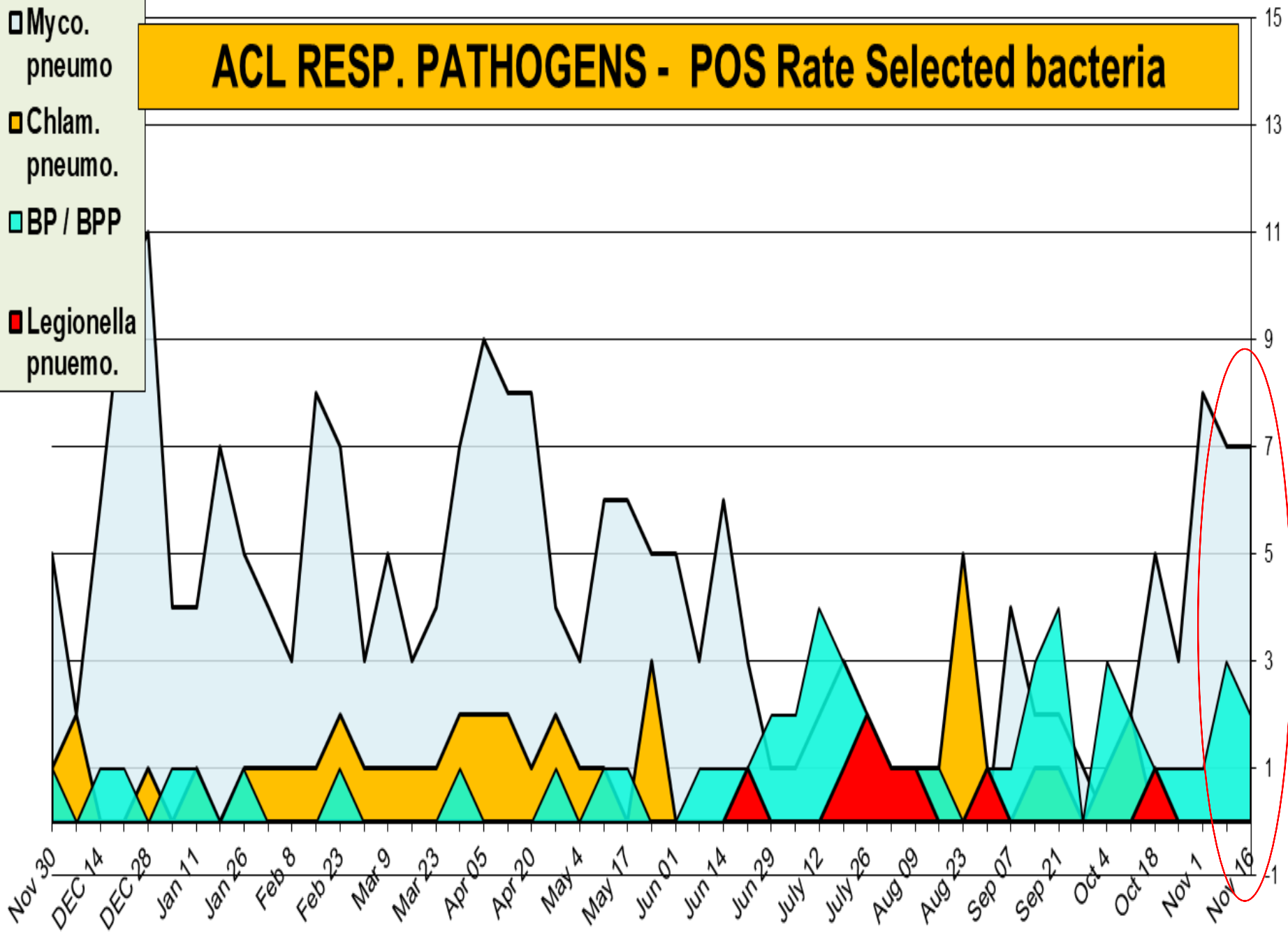
ACL RESP. PANEL - RSV PCR - 1.7%, RSV EIA - 4.4%

- EIA RSV
- RSV PCR

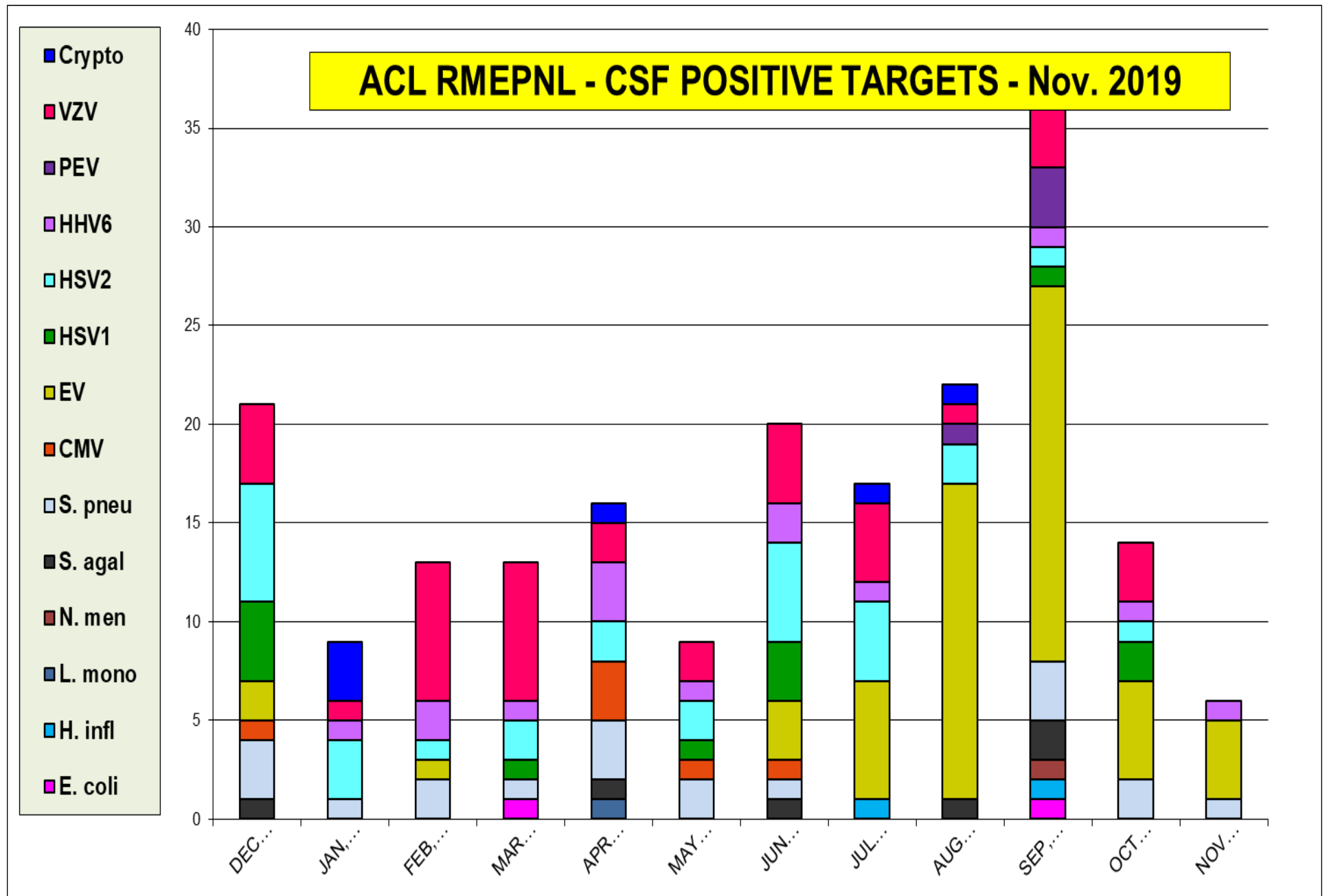


ACL RESP. PATHOGENS - POS Rate Selected bacteria

- Myco. pneumo
- Chlam. pneumo.
- BP / BPP
- Legionella pneumo.

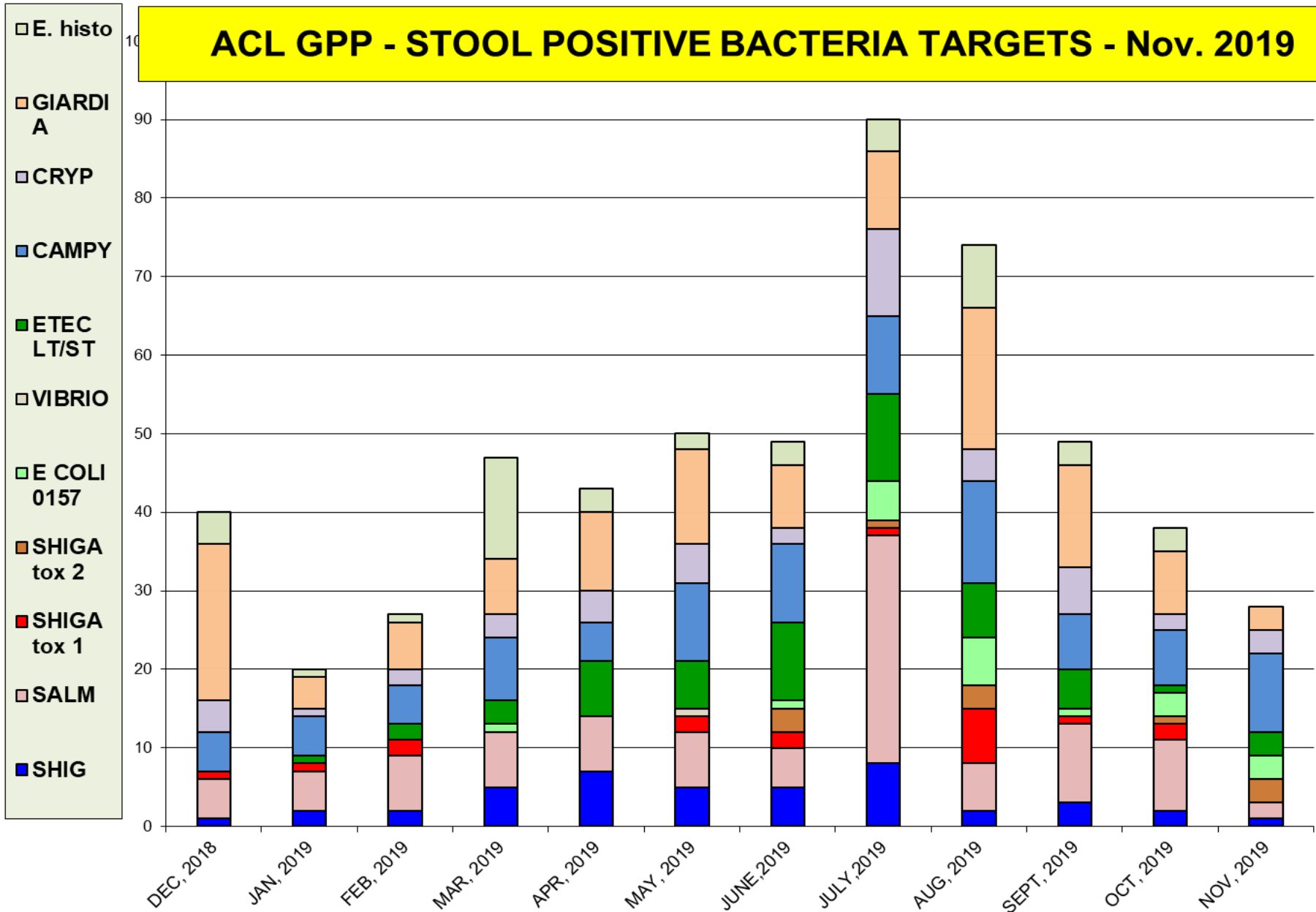


The most prevalent targets is Enterovirus (all viruses pos rate 6.1%)

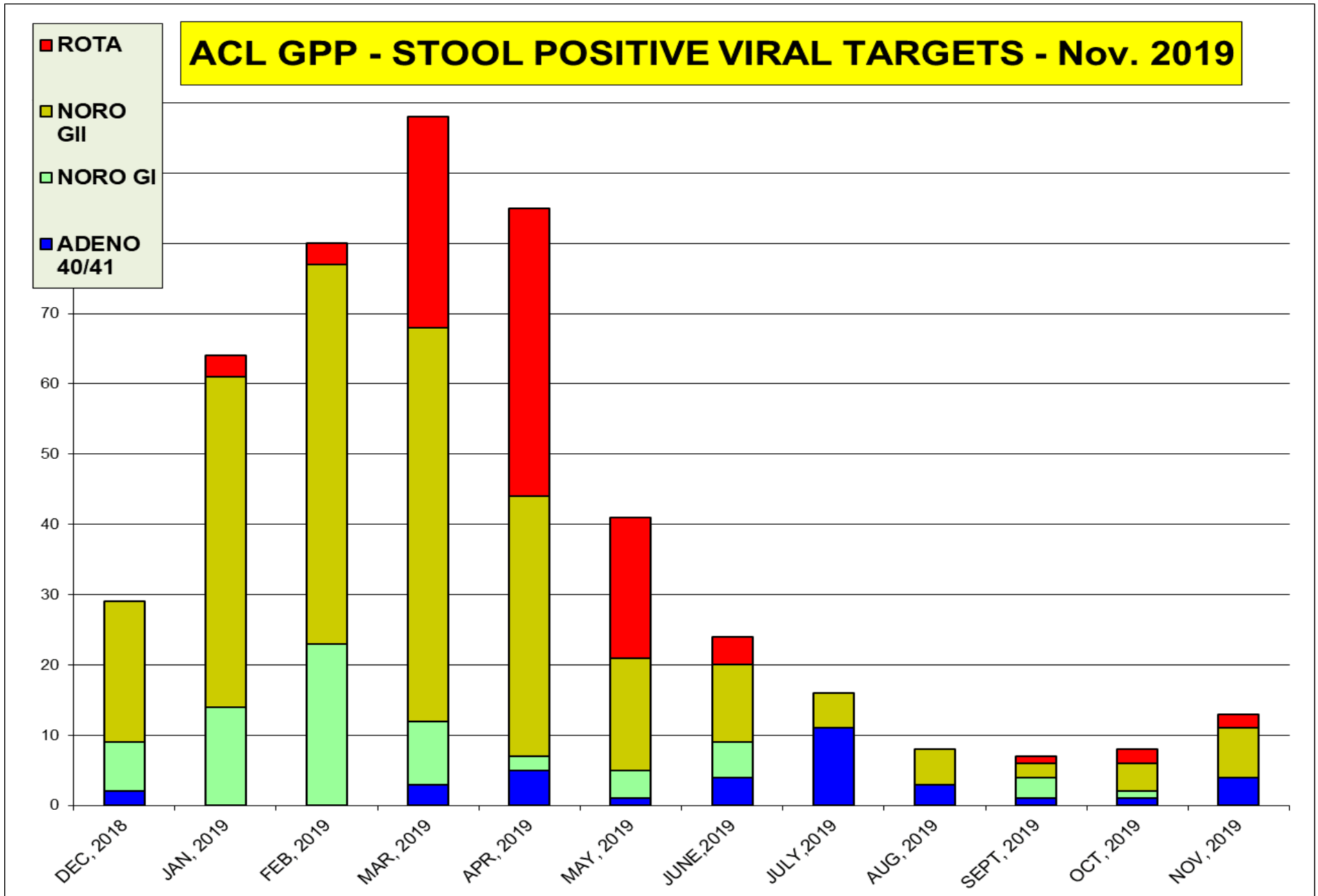


The most prevalent bacterial targets are **Campylobacter**

ACL GPP - STOOL POSITIVE BACTERIA TARGETS - Nov. 2019



The most prevalent virus target is **Norovirus**



BV	C.ALB	C.GLB	C.KUR	T.VAG	M.GEN	M.HOM	U.PAV	Tot. Test
4,878	4,878	4,878	4,878	4,878	4,878	4,878	4,878	4,878
23.5	16.5	2.3	0.4	3.2	1.2	10.8	28.2	86.2

