

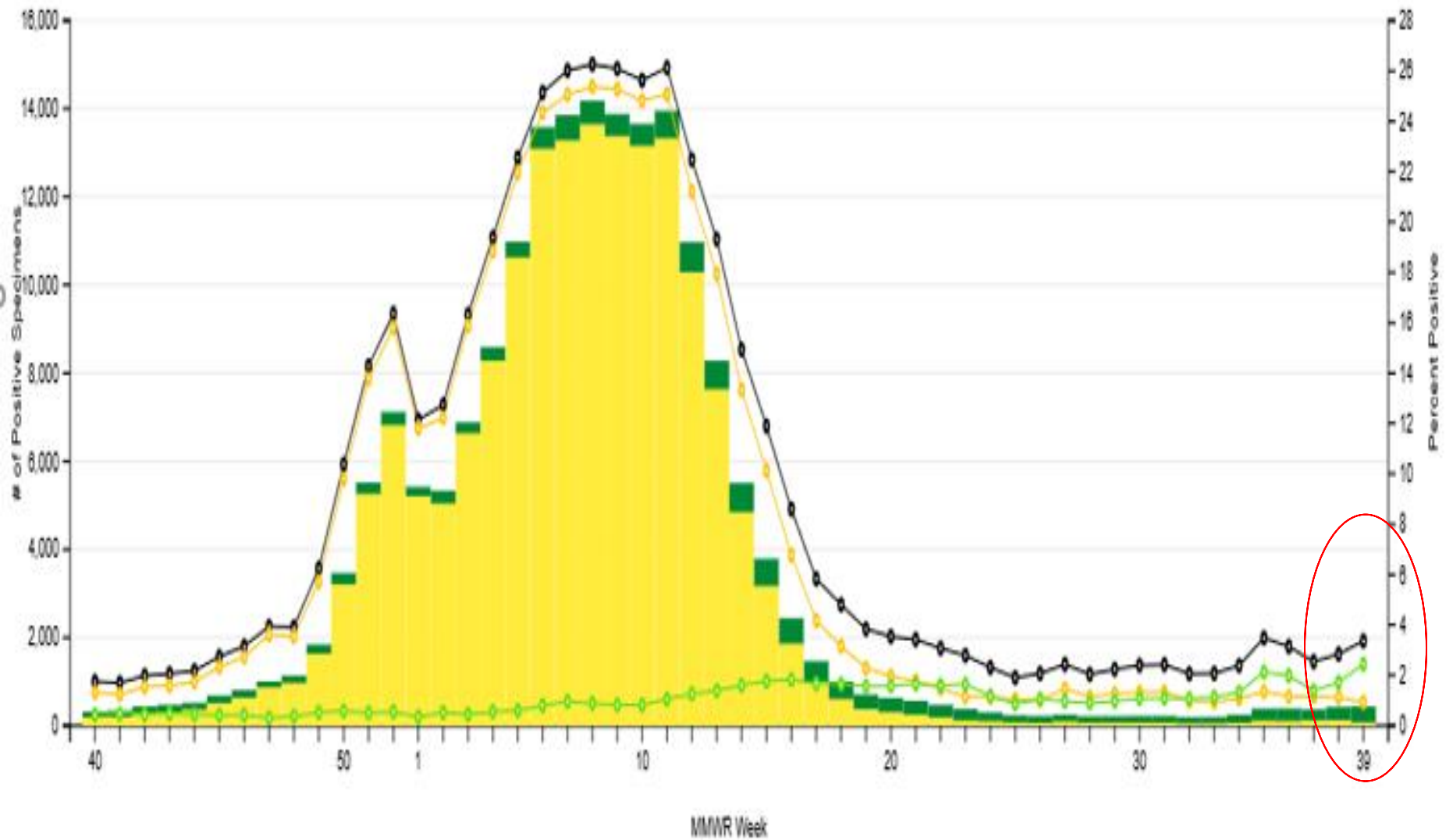
## Respiratory Pathogens - Oct 4 2019

Week	InfA-H1	InfA-H3	2009 H1N1	Inf B	RSV	All Para	EV / Rhino	Meta pneumo	Adeno	All Corona	Bocca	Myc. pneumo	Chlam. pneumo.	Legionella pneumo.	BP / BPP	Total Pos	POS FLU	Total	ACL %FLU	US %FLU	IL/WI PCR	AAH PCR
Oct 4	0	1	0	0	3	16	122	3	8	1	0	3	1	0	3	161	1	912	0.1	n/a	n/a	1.1
Sep 28	0	3	1	0	1	22	109	2	7	0	1	2	0	0	0	148	4	591	0.7	3.4	0.9	2.3
Sep 21	0	1	0	0	1	12	113	7	6	1	2	3	1	0	4	151	1	678	0.1	3.2	1.7	2.3
Sep 14	0	1	1	0	1	5	110	1	7	1	2	0	1	0	3	133	2	1091	0.2	3.0	2.6	2.3
Sep 07	0	1	0	0	0	7	73	5	6	0	4	0	0	0	1	97	1	615	0.2	3.2	0.9	2.6
Aug 31	0	1	0	0	1	4	39	1	3	1	0	4	1	1	1	56	1	775	0.1	3.5	0.7	1.3
Aug 23	0	1	0	0	1	8	42	1	2	6	3	2	5	0	0	71	1	393	0.3	3.2	0.7	1.2
Aug 16	0	0	1	0	1	5	31	4	5	1	1	0	1	0	1	50	1	655	0.2	2.3	0.2	1.7
Aug 09	0	1	0	0	0	5	29	1	5	2	0	0	1	1	1	44	1	629	0.2	2.1	0.2	0.0
Aug 2	0	1	0	0	2	10	46	4	6	0	1	0	0		0	70	1	758	0.1	2.4	0.9	2.0
July 26	0	2	0	0	1	6	36	10	1	1	2	3	0		2	62	2	504	0.4	2.4	0.4	3.7
July 19	0	2	0	0	0	18	38	9	8	2	3	0	1		3	81	2	491	0.4	2.3	1.0	5.6
July 12	0	2	0	0	1	12	39	6	7	0	2	2	0		4	71	2	567	0.4	2.1	0.3	3.2
July 5	0	0	0	0	0	19	41	9	5	4	1	4	0		2	83	3	387	0.8	2.5	1.4	3.0
Jun 29	0	1	1	1	1	26	54	17	9	0	1	1	0		2	112	3	694	0.4	2.1	1.5	3.1
Jun 21	0	0	2	0	0	25	61	23	10	4	3	1	0		1	129	2	718	0.3	1.9	0.9	2.2

Flu PCR % Rate

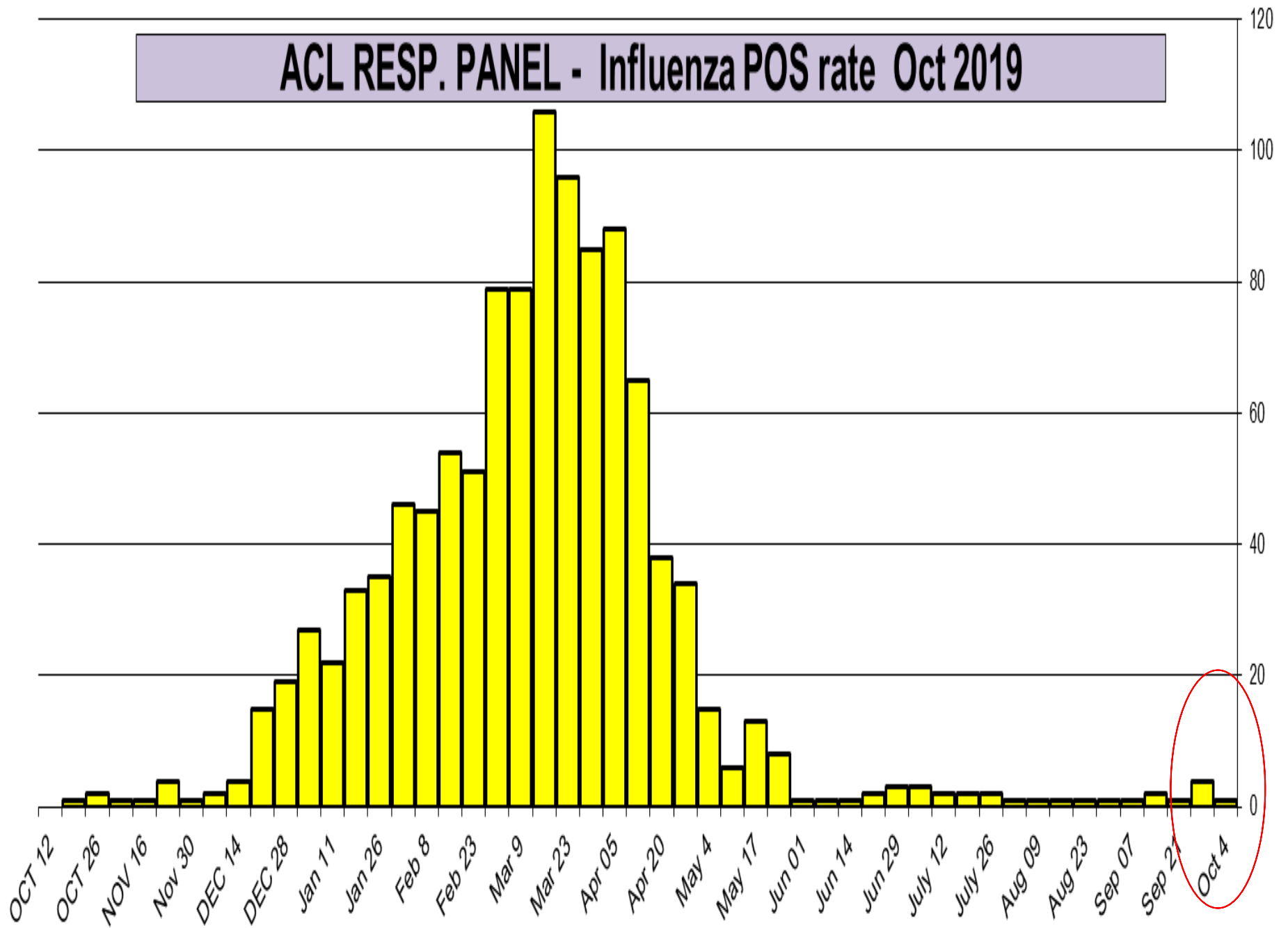
Influenza Positive Tests Reported to CDC by Clinical Laboratories, National Summary,  
 2018-19 Season, week ending Sep 28, 2019

Reported by: U.S. WHOINREVSS Collaborating Laboratories and ILINet



Check All  
  — Percent Positive  
  — Percent Positive for Influenza A  
  — Percent Positive for Influenza B  
  Total A  
  Total B

# ACL RESP. PANEL - Influenza POS rate Oct 2019



# ACL RESP. PANEL - POS Rate Selected viruses

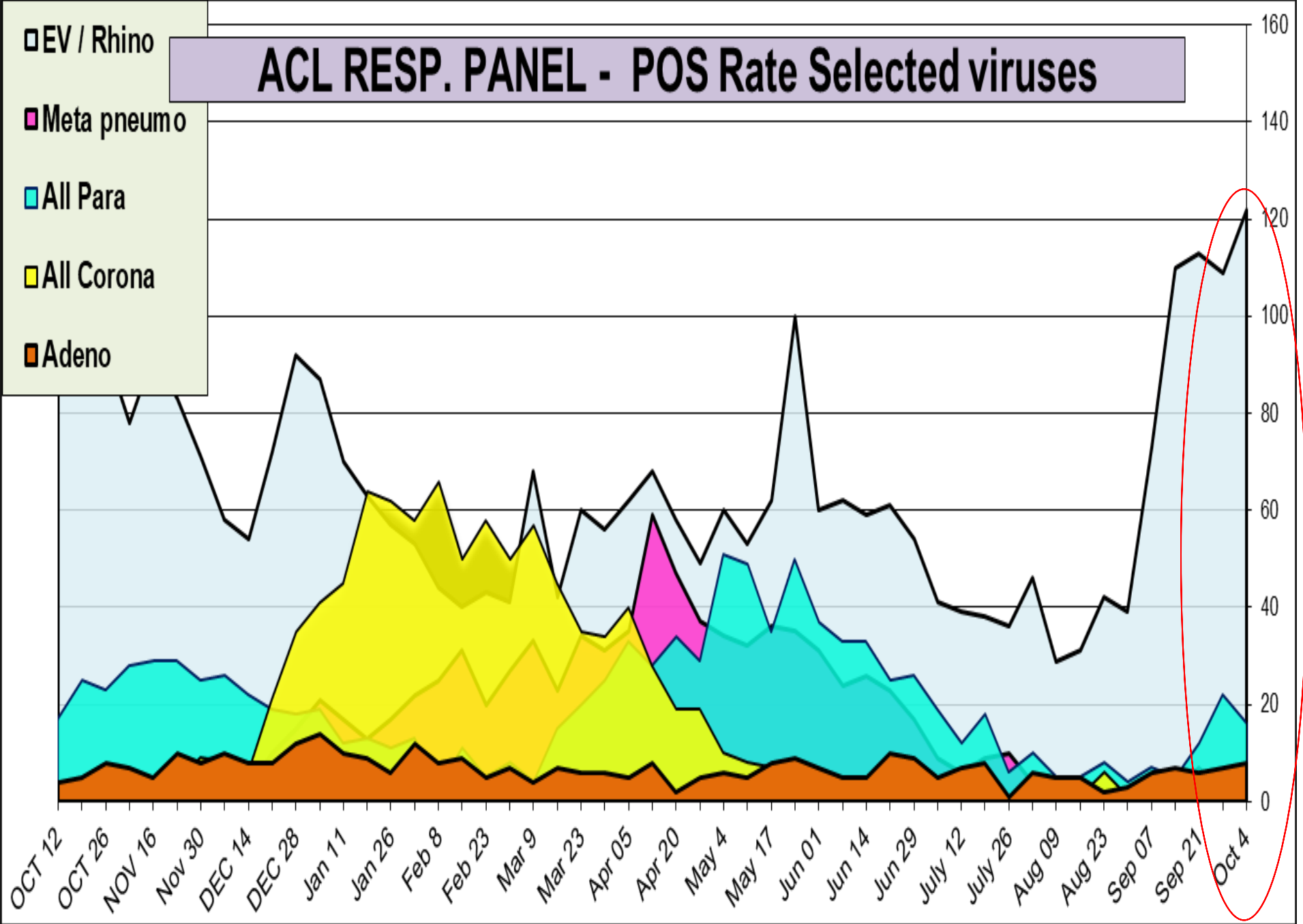
□ EV / Rhino

■ Meta pneumo

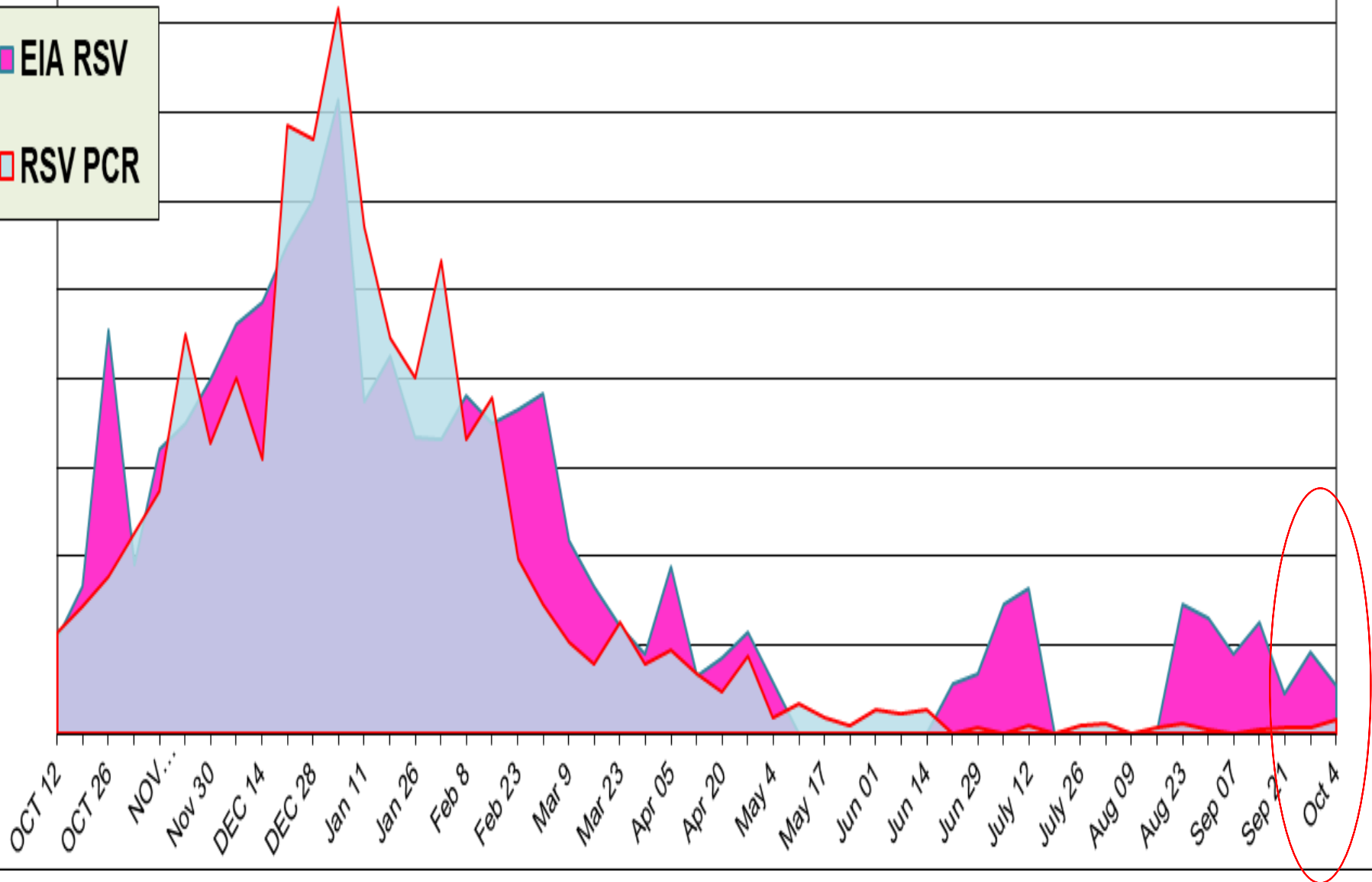
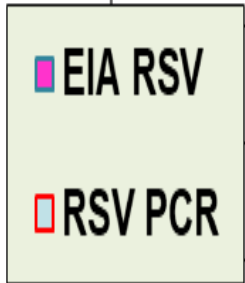
■ All Para

■ All Corona

■ Adeno

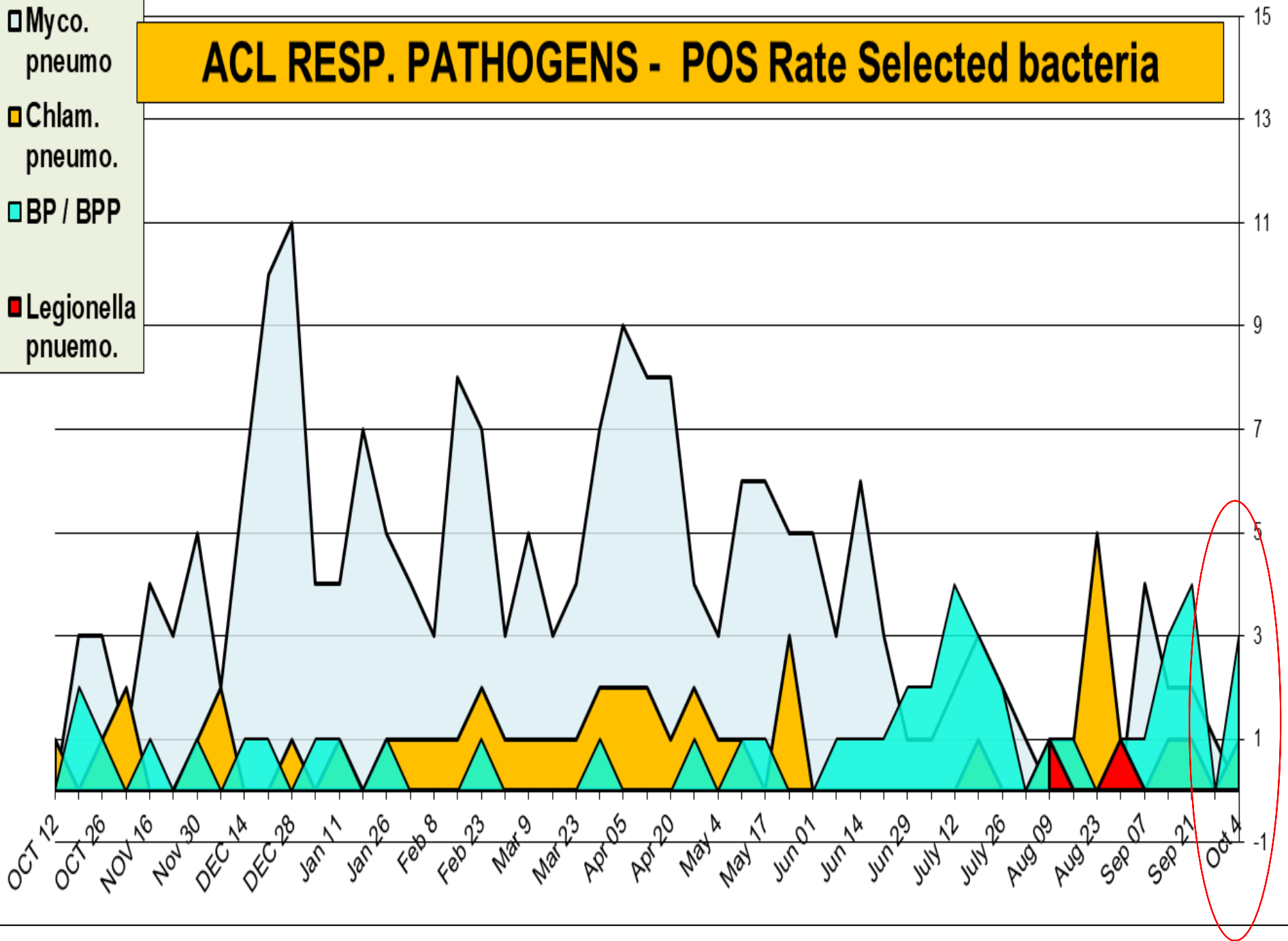


# ACL RESP. PANEL - RSV PCR - 0.3%, RSV EIA - 1.1%

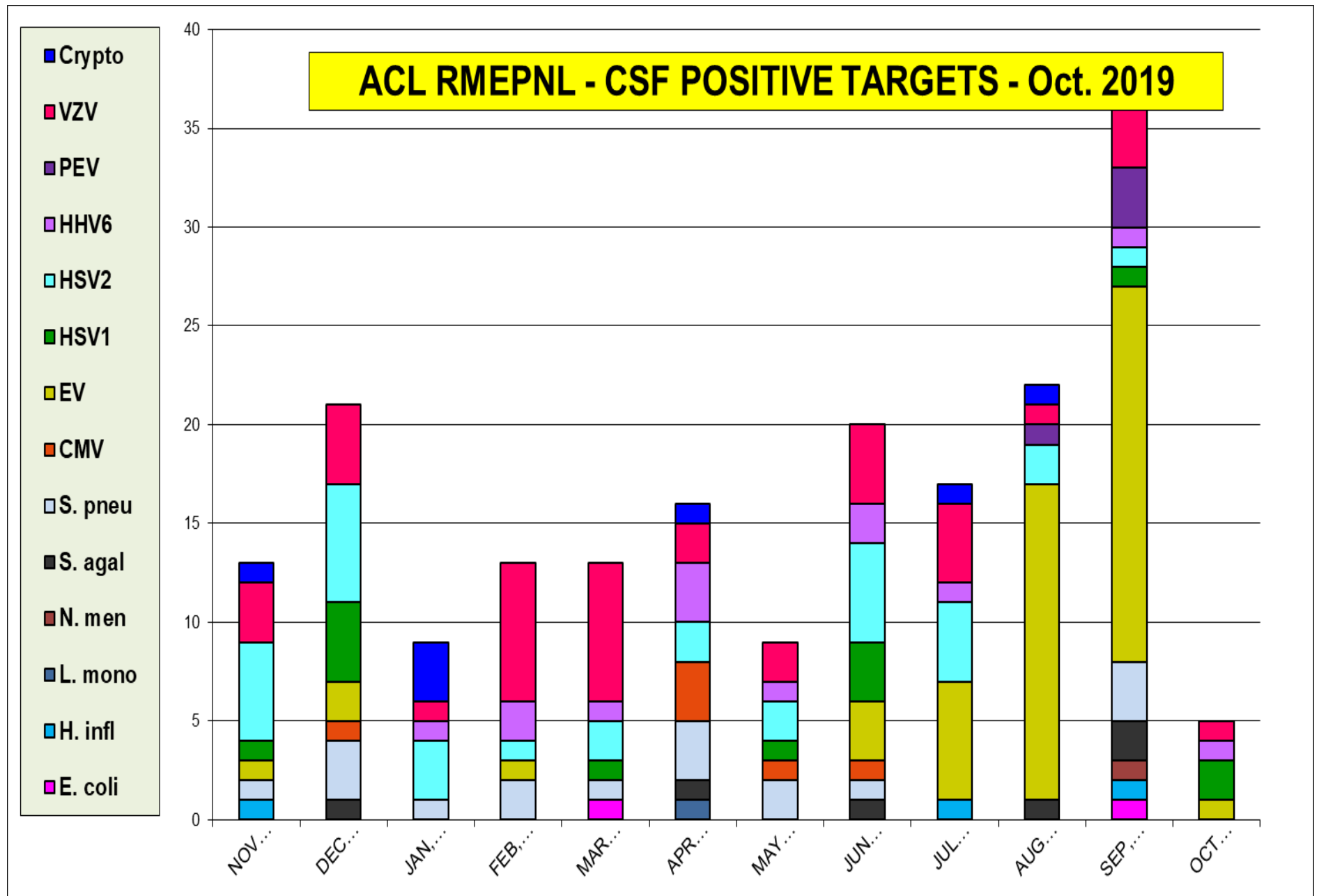


# ACL RESP. PATHOGENS - POS Rate Selected bacteria

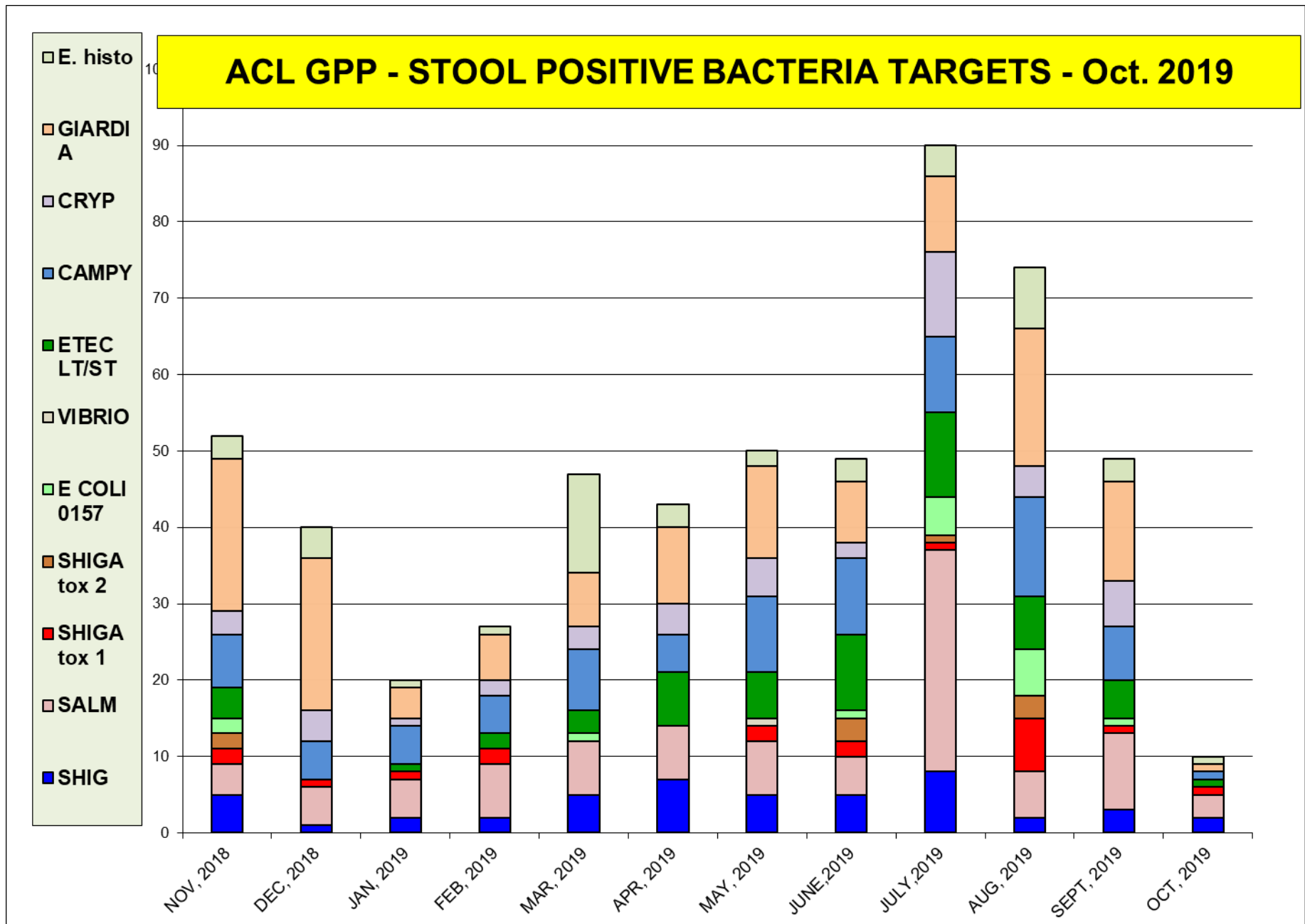
- Myco. pneumo
- Chlam. pneumo.
- BP / BPP
- Legionella pneumo.



The most prevalent targets is Enterovirus (all viruses pos rate 18.5%)



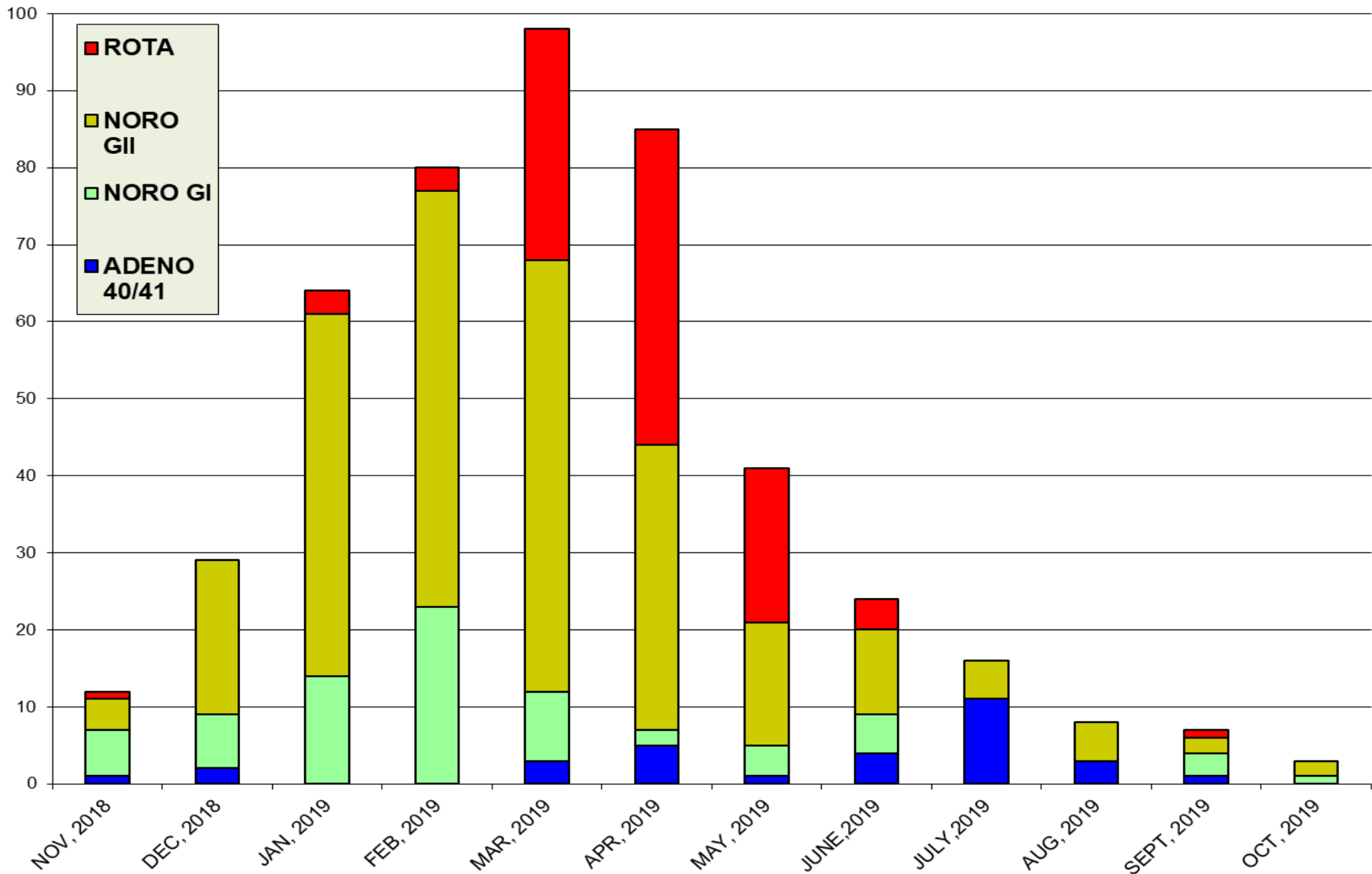
The most prevalent bacterial targets are **Giardia**, **Salmonella**





The most prevalent virus target is **Norovirus**

### ACL GPP - STOOL POSITIVE VIRAL TARGETS - Oct. 2019



BV	C.alb	C.glab	C. kru	T.vag	M.gen	M.hom	U.prv	Tot. pos.
4,683	4,683	4,683	4,683	4,683	4,683	4,683	4,683	4,683
<b>24.2</b>	<b>16.2</b>	<b>2.2</b>	<b>0.4</b>	<b>3.2</b>	<b>1.0</b>	<b>10.9</b>	<b>28.3</b>	<b>86.2</b>

