

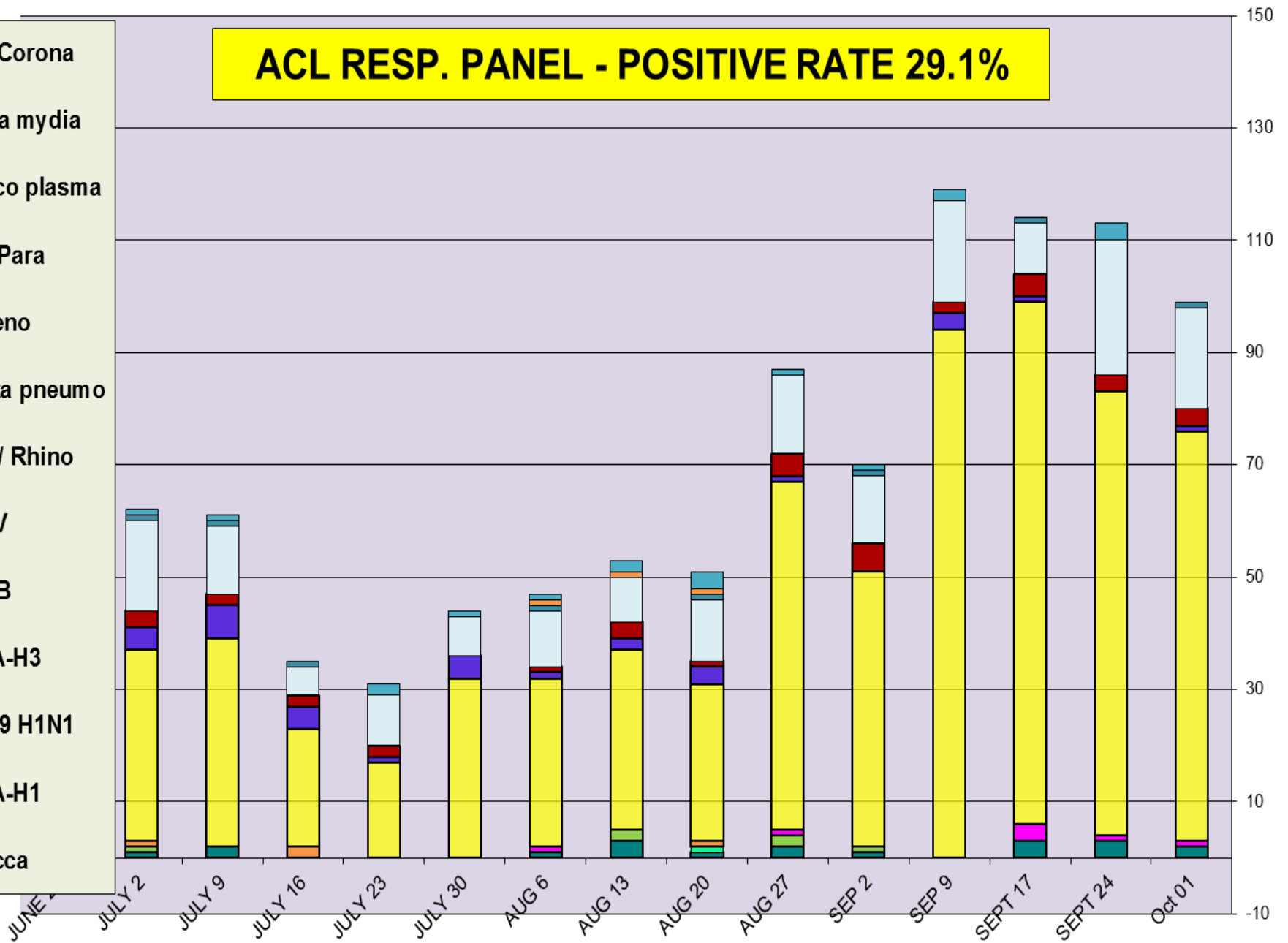
## Respiratory Pathogens Data Jun 18- Oct 7 2017

Week Beginning	InfA-H1	InfA-H3	2009 H1N1	Inf B	RSV	All Para	EV/ Rhino	Meta pneumo	Adeno	All Corona	Bocca	Myco plasma	Chla mydia	Total Pos	POS FLU	Total	ACL %FLU	US %FLU	IL/WI %FLU	EIA %FLU
Oct 01	0	0	0	0	1	18	73	1	3	0	2	1	0	99	0	340	0.0	2.7	1.1	3.0
SEPT 24	0	0	0	0	1	24	79	0	3	3	3	0	0	113	0	286	0.0	2.0	1.0	1.7
SEPT 17	0	0	0	0	3	9	93	1	4	0	3	1	0	114	0	314	0.0	1.6	1.2	1.7
SEP 9	0	0	0	0	0	18	94	3	2	2	0	0	0	119	0	359	0.0	1.6	1.3	1.7
SEP 2	0	0	1	0	0	12	49	0	5	1	1	1	0	70	1	234	0.4	1.7	1.5	2.7
AUG 27	0	0	2	0	1	14	62	1	4	1	2	0	0	87	2	252	0.8	1.8	1.1	1.6
AUG 20	0	1	0	1	0	11	28	3	1	3	1	1	1	51	2	215	0.9	1.9	0.9	4.2
AUG 13	0	0	2	0	0	8	32	2	3	2	3	0	1	53	2	196	1.0	1.7	0.8	3.6
AUG 6	0	0	0	0	1	10	30	1	1	1	1	1	1	47	0	211	0.0	2.3	1.0	0.0
JULY 30	0	0	0	0	0	7	32	4	0	1	0	0	0	44	0	214	0.0	2.2	1.2	0.0
JULY 23	0	0	0	0	0	9	17	1	2	2	0	0	0	31	0	197	0.0	2.4	1.4	0.0
JULY 16	0	0	0	2	0	5	21	4	2	0	0	1	0	35	0	187	1.1	2.1	0.6	0.0
JULY 9	0	0	0	0	0	12	37	6	2	1	2	1	0	61	0	222	0.0	2.4	0.9	6.7
JULY 2	0	0	1	1	0	16	34	4	3	1	1	1	0	62	0	224	0.9	2.4	0.4	1.8
JUNE 25	0	0	0	0	0	16	34	3	5	0	0	0	0	58	0	222	0.0	2.7	1.0	2.4
JUNE 18	0	0	0	0	0	16	30	5	3	0	2	0	0	56	0	217	0.0	3.0	1.1	1.3

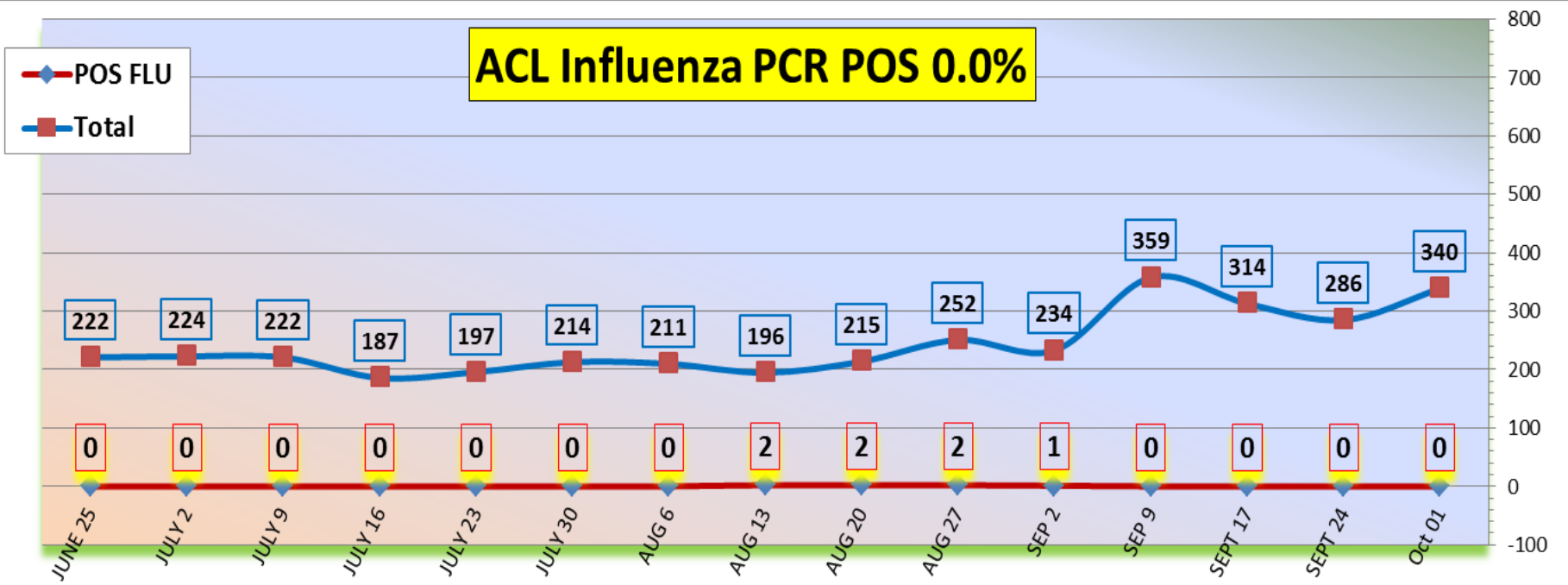
Flu PCR  
% Rate

# ACL RESP. PANEL - POSITIVE RATE 29.1%

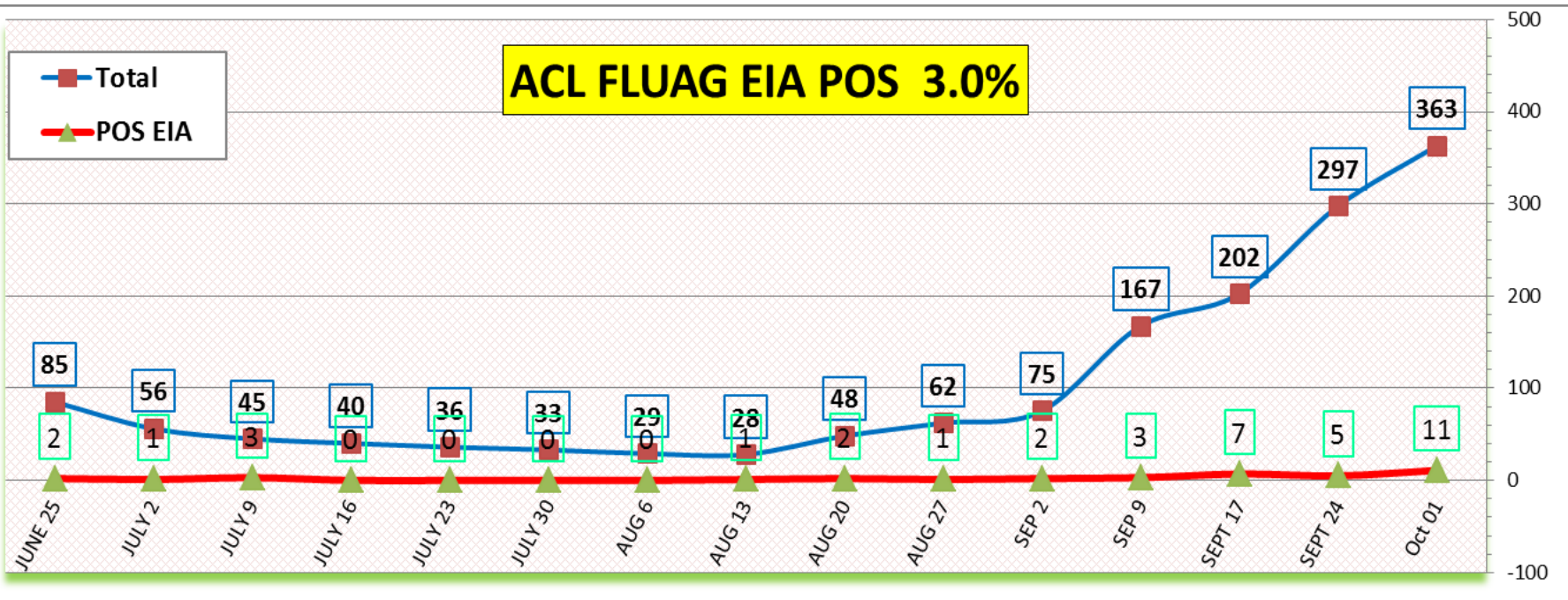
- All Corona
- Chla mydia
- Myco plasma
- All Para
- Adeno
- Meta pneumo
- EV / Rhino
- RSV
- Inf B
- InfA-H3
- 2009 H1N1
- InfA-H1
- Bocca



### ACL Influenza PCR POS 0.0%

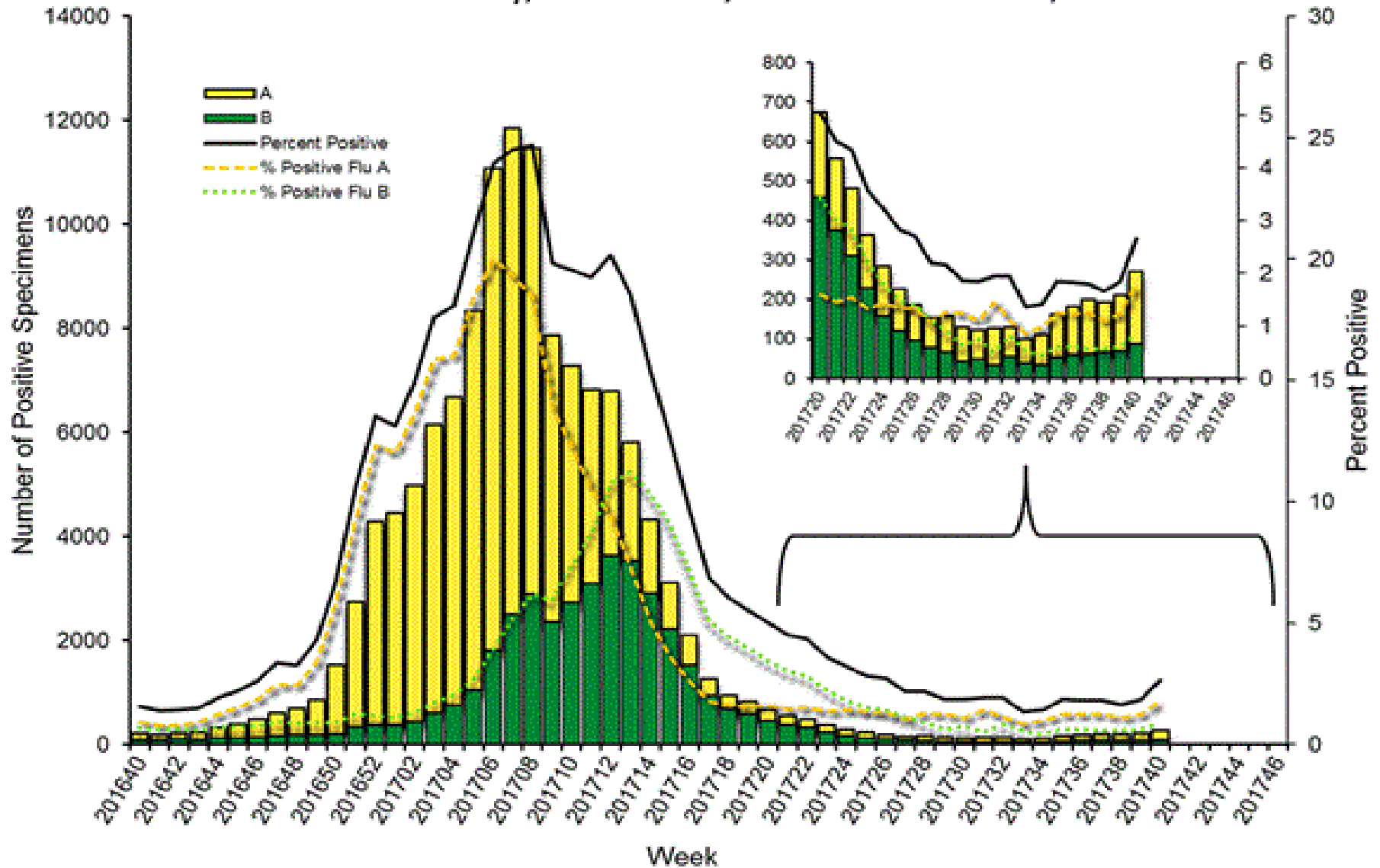


### ACL FLUAG EIA POS 3.0%



CDC Oct 7, 2017 Positivity rate 2.7% - Flu A – 86% (2009 H1N1 -10% , seasonal H3 -90%) Flu B – 14%

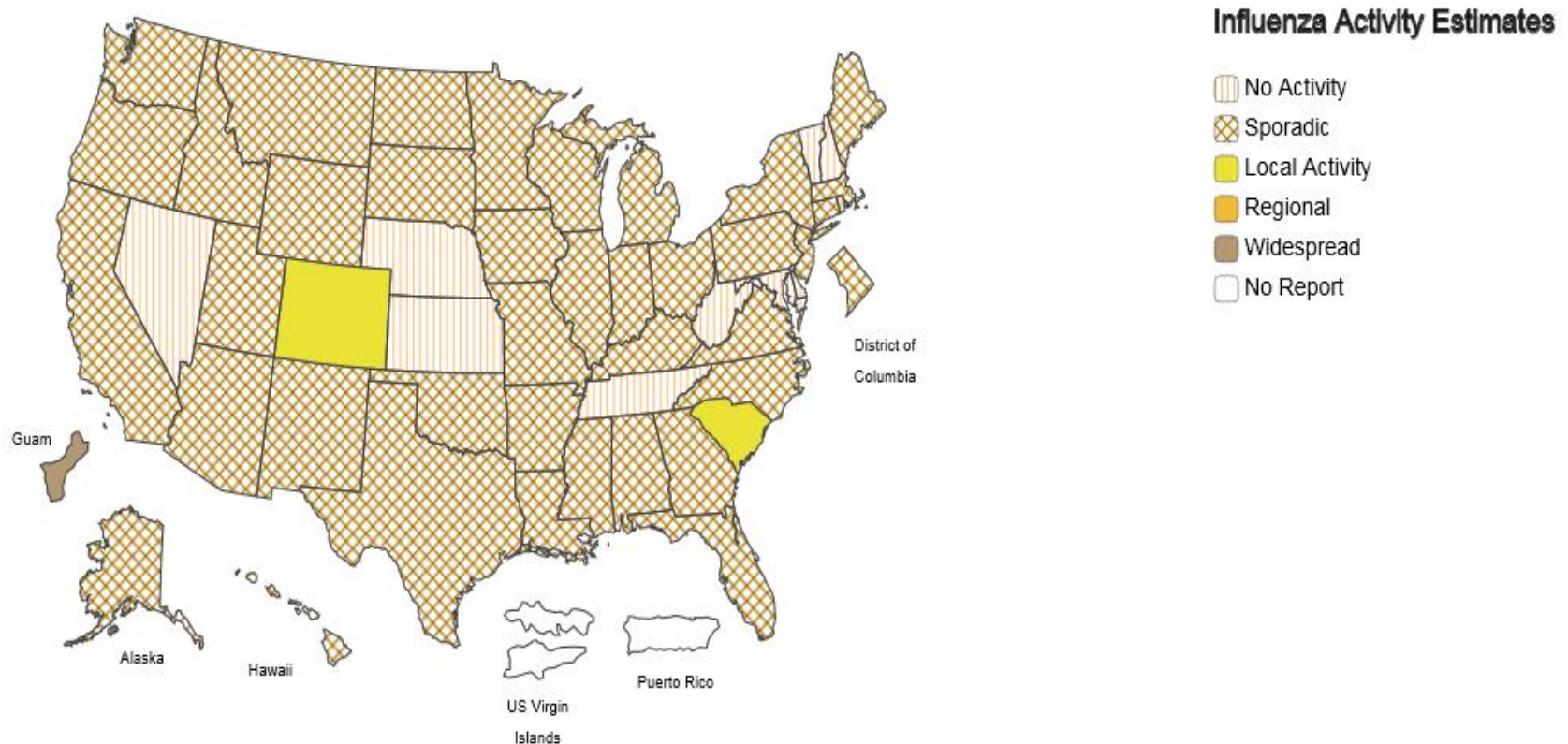
### Influenza Positive Tests Reported to CDC by U.S. Clinical Laboratories, National Summary, October 2, 2016 – October 7, 2017



## A Weekly Influenza Surveillance Report Prepared by the Influenza Division

Weekly Influenza Activity Estimates Reported by State and Territorial Epidemiologists\*

Week Ending Oct 07, 2017 - Week 40

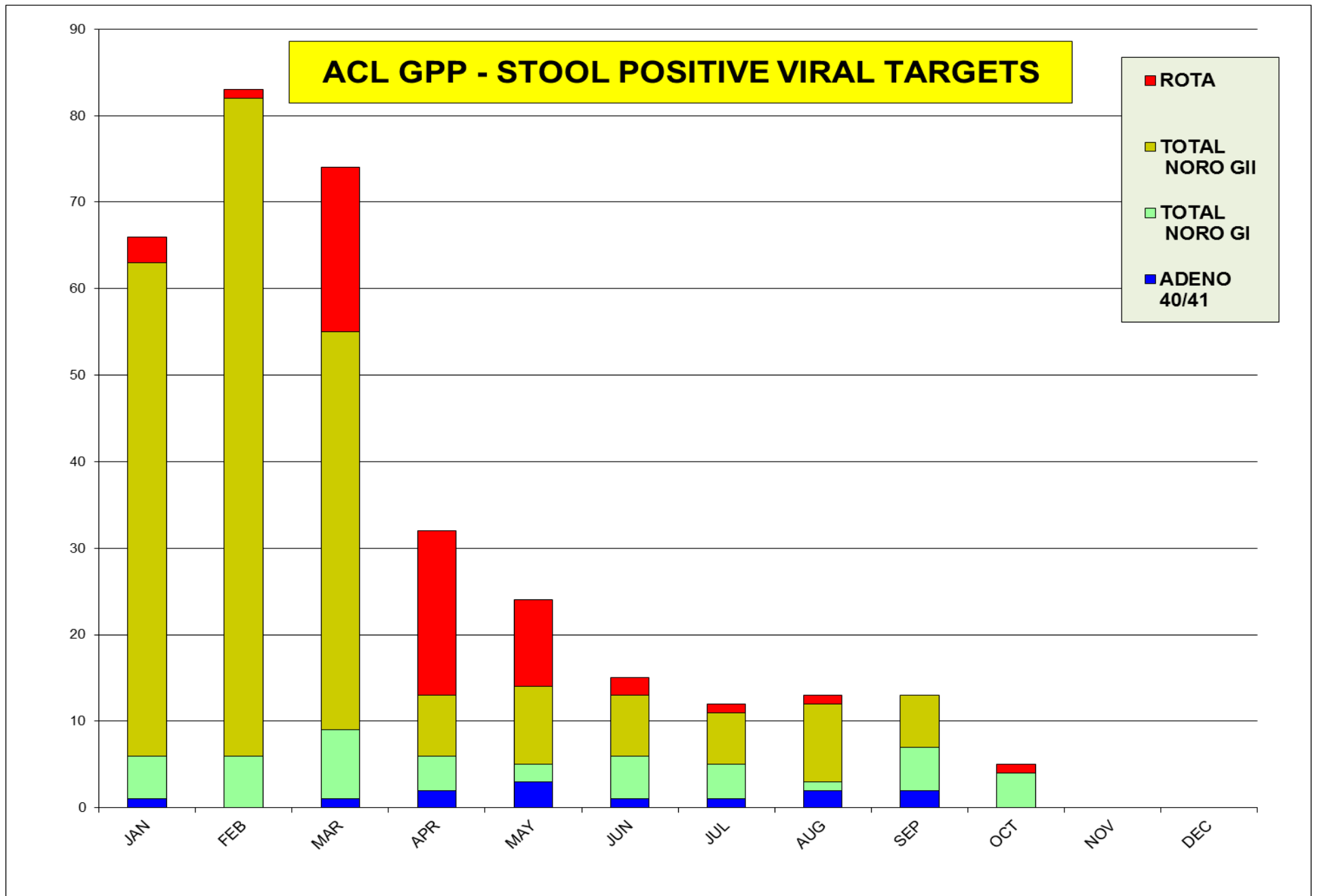


\*This map indicates geographic spread and does not measure the severity of influenza activity.



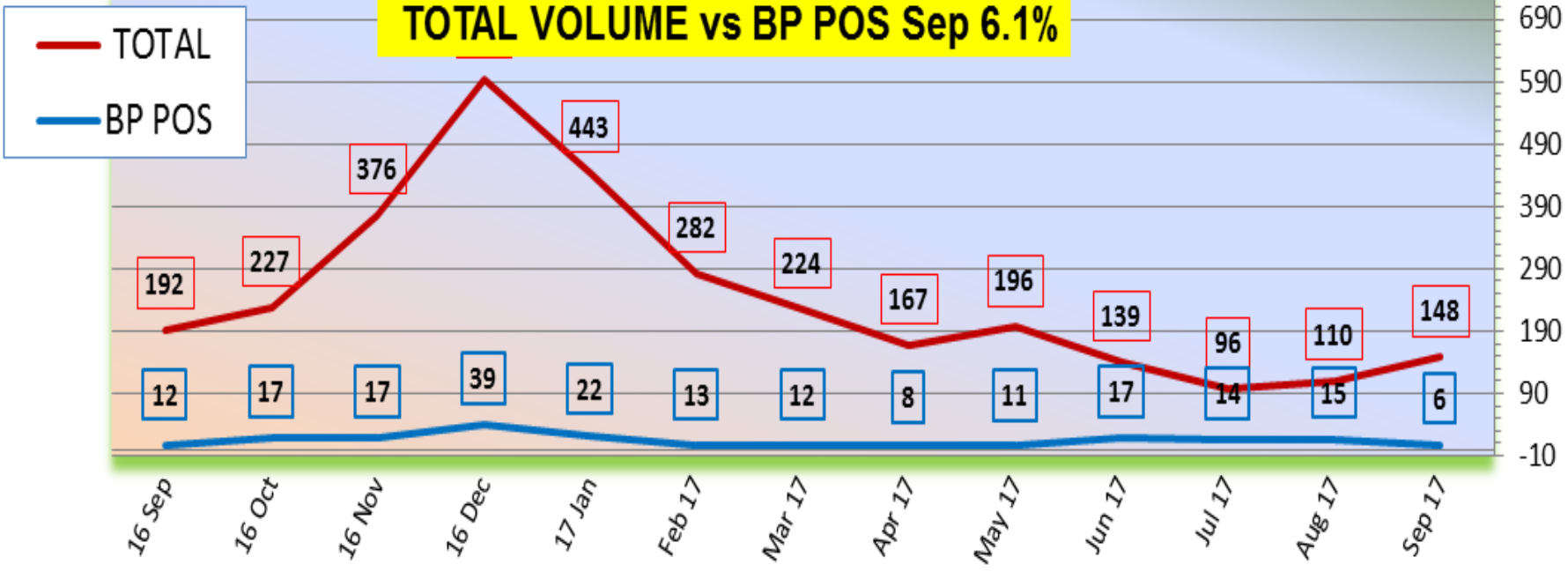


The most positive targets in Oct is; **Low level of NORO GI virus**

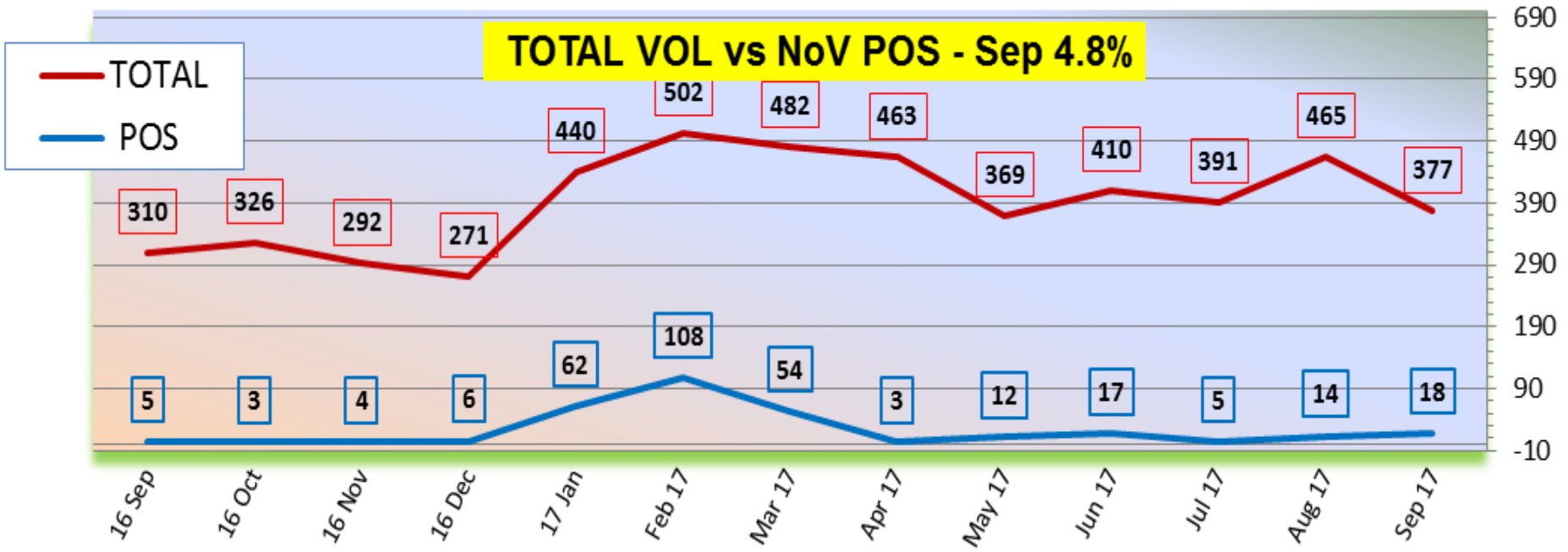




**TOTAL VOLUME vs BP POS Sep 6.1%**



**TOTAL VOL vs NoV POS - Sep 4.8%**



## Neuraminidase Inhibitors Resistance - **no new update by CDC since May 2017**

Per CDC website	Oseltamivir		Zanamivir		Peramivir	
	Virus Samples tested (n)	Resistant Viruses, (%)	Virus Samples tested (n)	Resistant Viruses, (%)	Virus Samples tested (n)	Resistant Viruses, (%)
Influenza A (H1N1)pdm09	<b>324</b>	<b>0</b>	<b>324</b>	<b>0</b>	<b>324</b>	<b>0</b>
Influenza A (H3N2)	<b>2305</b>	<b>0</b>	<b>2305</b>	<b>0</b>	<b>1279</b>	<b>0</b>
Influenza B	<b>829</b>	<b>0</b>	<b>829</b>	<b>0</b>	<b>829</b>	<b>0</b>

### Update Aug- 2017 PAHO/CDC

Target	Source	Period	CDC	US % POS	ACL 2017
Locally acquired	US (endemic)	Jan 2017-Aug 2017	<b>0</b>	<b>0.00</b>	
<b>Zika virus US import</b>	<a href="#">US (travelers)</a>	Jan 2017-Aug 2017	<b>185</b>	<b>0.06</b>	<b>4</b>
<b>Zika virus US territory.</b>	<a href="#">US (local)Puerto Rico</a>	Jan 2017-Aug 2017	<b>553</b>	<b>0.15</b>	0
<b>Dengue US import</b>	<a href="#">US (travelers)</a>	07/31/17	<b>62</b>	<b>0.02</b>	<b>3</b>
<b>Dengue US territory</b>	<a href="#">US (local)Puerto Rico9</a>	07/31/17	<b>9</b>	<b>0.00</b>	0
<b>Chikungunya US import</b>	<a href="#">US (travelers)</a>	Jan 2017-Aug 2017	<b>20</b>	<b>0.01</b>	<b>1</b>
<b>Chikungunya US territory</b>	<a href="#">US (local)Puerto Rico</a>	Jan 2017-Aug 2017	<b>15</b>	<b>0.00</b>	0