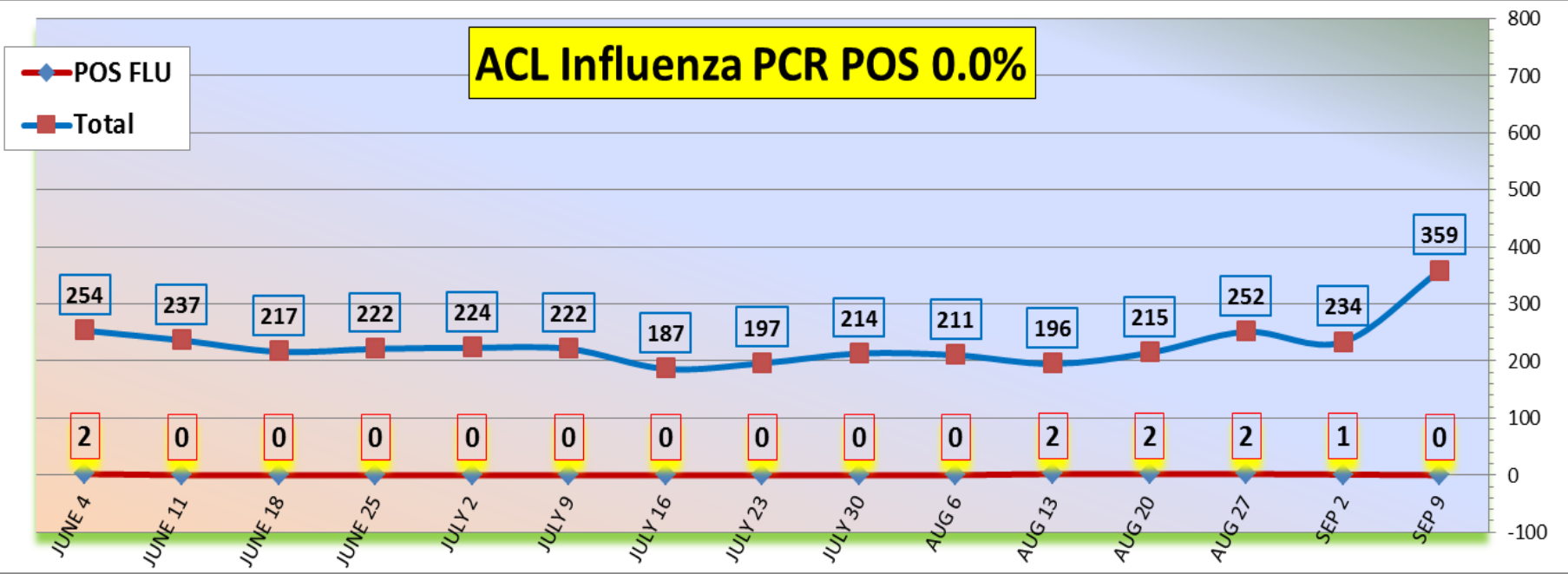


## Respiratory Pathogens Data May 28- Sep 16 2017

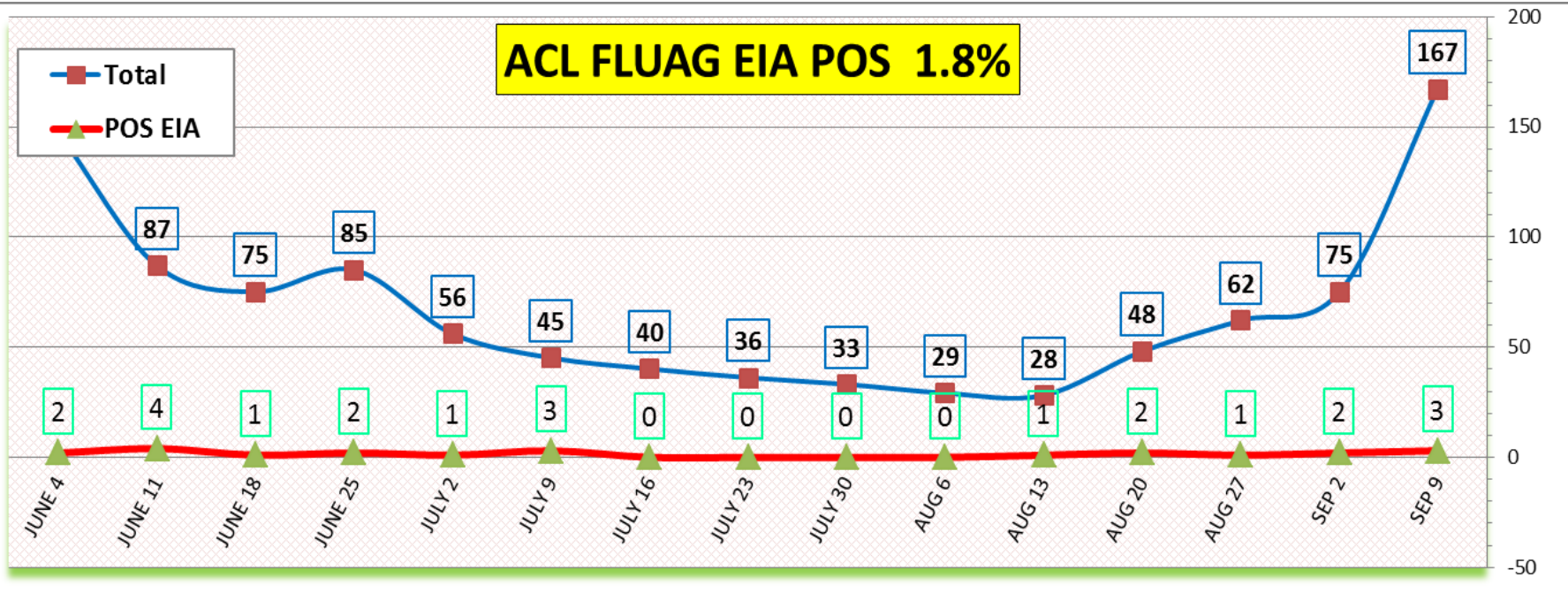
Week Beginning	InfA-H1	InfA-H3	2009 H1N1	Inf B	RSV	All Para	EV/ Rhino	Meta pneumo	Adeno	All Corona	Bocca	Mycoplasma	Chlamydia	Total Pos	POS FLU	Total	ACL %FLU	US %FLU	IL/WI %FLU	EIA %FLU
SEP 9	0	0	0	0	0	18	94	3	2	2	0	0	0	119	0	359	0.0	1.0	1.1	1.8
SEP 2	0	0	1	0	0	12	49	0	5	1	1	1	0	70	1	234	0.4	1.6	0.9	2.7
AUG 27	0	0	2	0	1	14	62	1	4	1	2	0	0	87	2	252	0.8	1.4	0.6	
AUG 20	0	1	0	1	0	11	28	3	1	3	1	1	1	51	2	215	0.9	1.6	1.2	
AUG 13	0	0	2	0	0	8	32	2	3	2	3	0	1	53	2	196	1.0	1.7	0.8	3.6
AUG 6	0	0	0	0	1	10	30	1	1	1	1	1	1	47	0	211	0.0	2.3	1.0	0.0
JULY 30	0	0	0	0	0	7	32	4	0	1	0	0	0	44	0	214	0.0	2.2	1.2	0.0
JULY 23	0	0	0	0	0	9	17	1	2	2	0	0	0	31	0	197	0.0	2.4	1.4	0.0
JULY 16	0	0	0	2	0	5	21	4	2	0	0	1	0	35	0	187	1.1	2.1	0.6	0.0
JULY 9	0	0	0	0	0	12	37	6	2	1	2	1	0	61	0	222	0.0	2.4	0.9	6.7
JULY 2	0	0	1	1	0	16	34	4	3	1	1	1	0	62	0	224	0.9	2.4	0.4	1.8
JUNE 25	0	0	0	0	0	16	34	3	5	0	0	0	0	58	0	222	0.0	2.7	1.0	2.4
JUNE 18	0	0	0	0	0	16	30	5	3	0	2	0	0	56	0	217	0.0	3.0	1.1	1.3
JUNE 11	0	0	0	0	0	27	37	14	6	2	2	0	0	88	0	237	0.0	3.3	0.8	4.6
JUNE 4	0	0	1	1	1	21	48	12	3	5	1	0	1	94	2	254	0.8	3.6	0.8	1.4
May 28	0	0	0	5	1	23	49	17	5	0	3	0	0	103	5	279	1.8	4.5	1.2	1.8

Flu PCR  
% Rate

### ACL Influenza PCR POS 0.0%

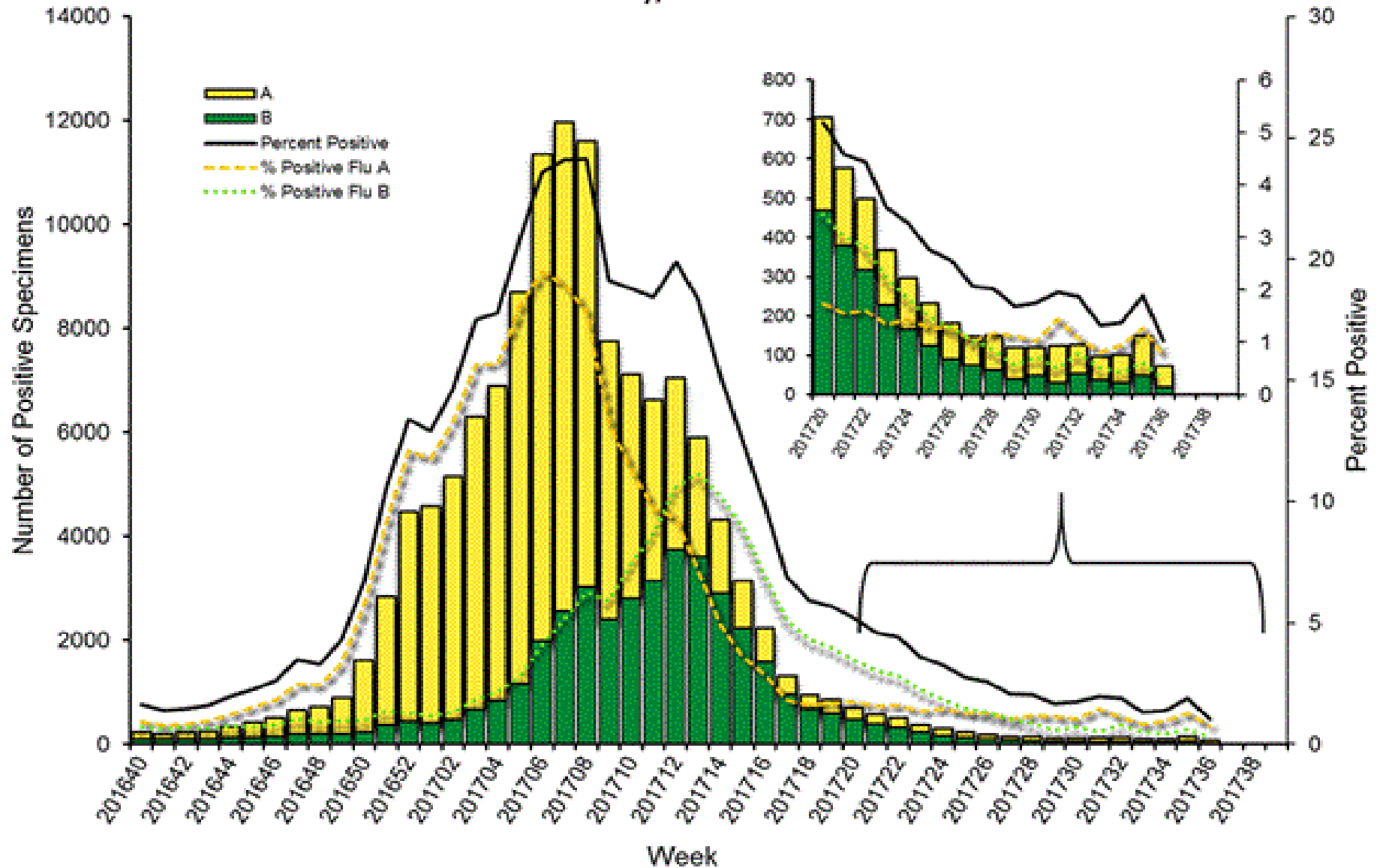


### ACL FLUAG EIA POS 1.8%

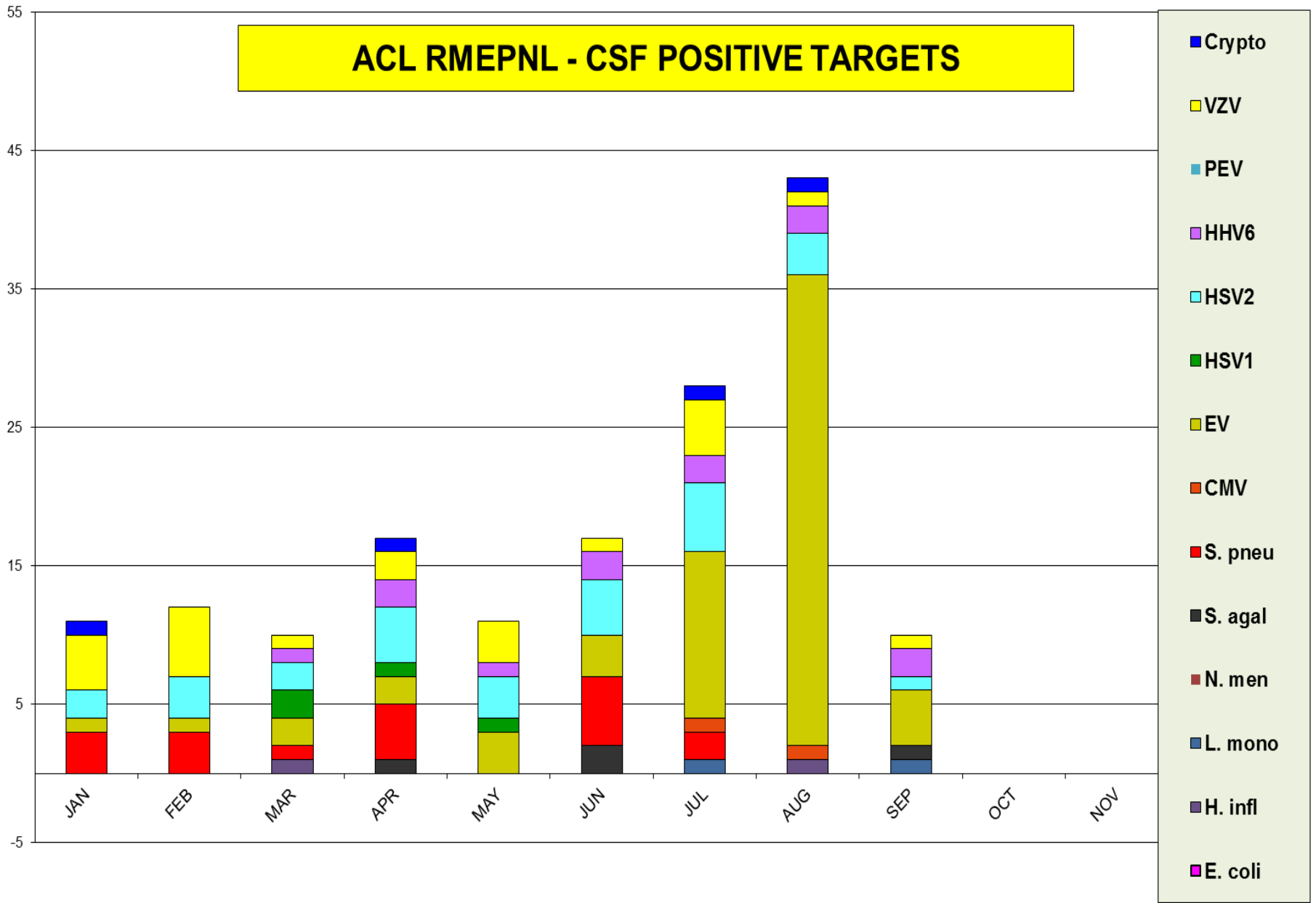


CDC Sep 8, 2017 Positivity rate 1.6% - Flu A – 75% (2009 H1N1 -20% , seasonal H3 -80%) Flu B – 25%

### Influenza Positive Tests Reported to CDC by U.S. Clinical Laboratories, National Summary, 2016 – 2017 Season



# ACL RMEPNL - CSF POSITIVE TARGETS

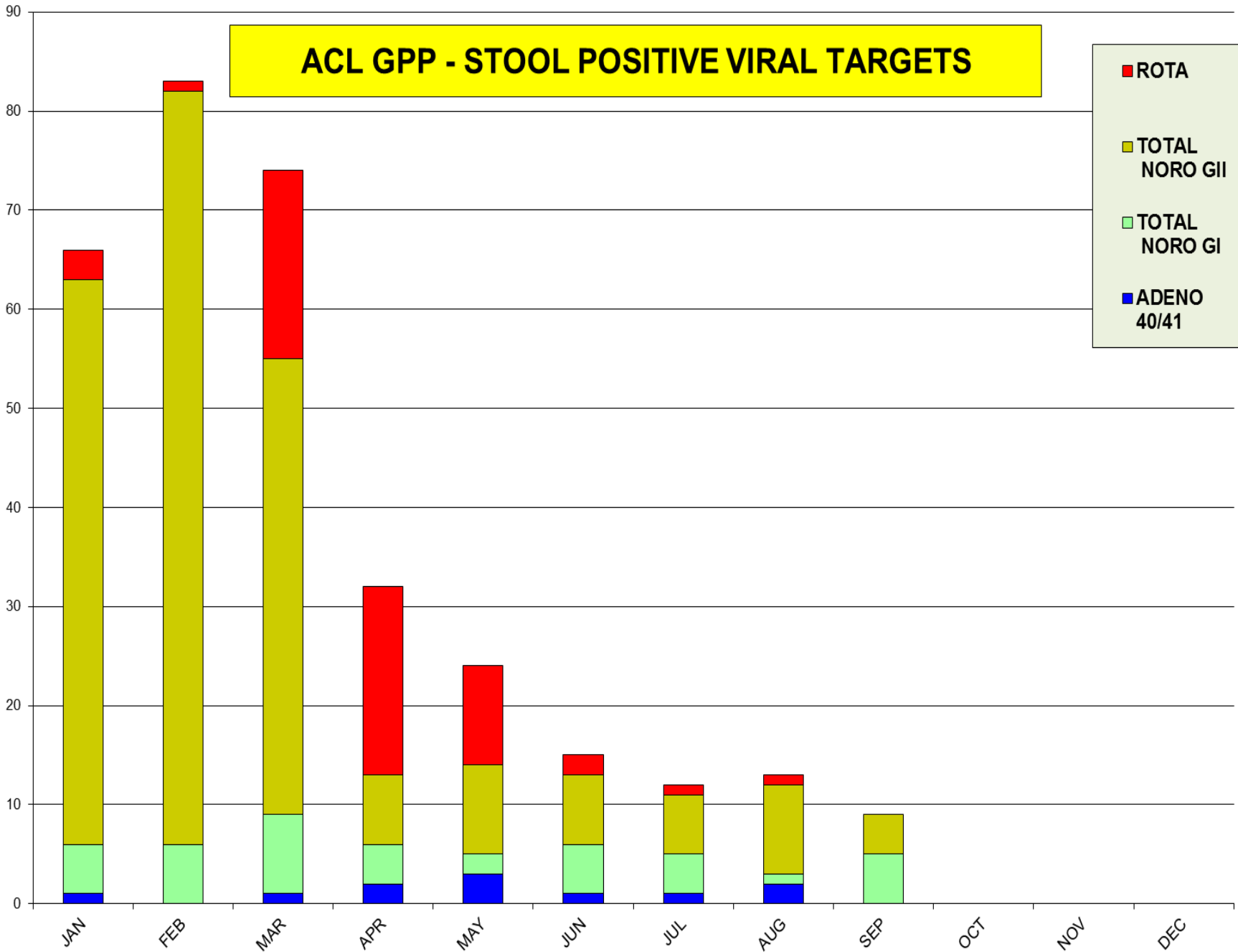


Most positive Enterovirus

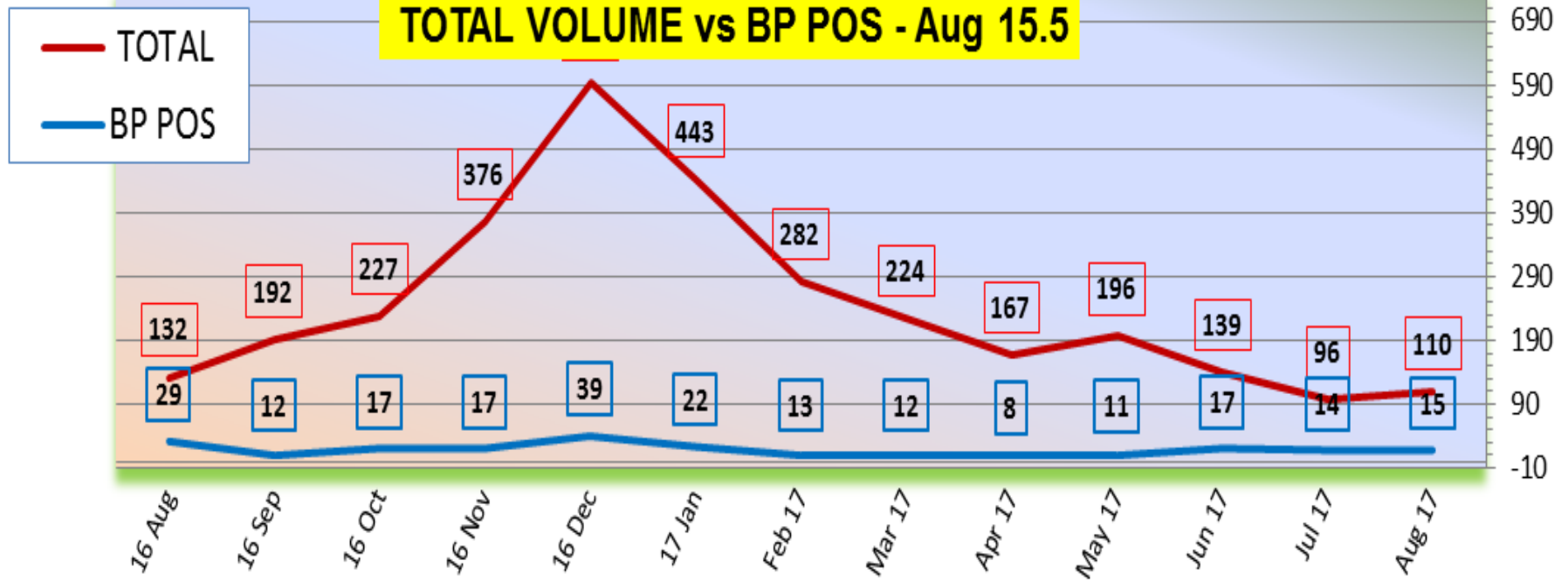


# ACL GPP - STOOL POSITIVE VIRAL TARGETS

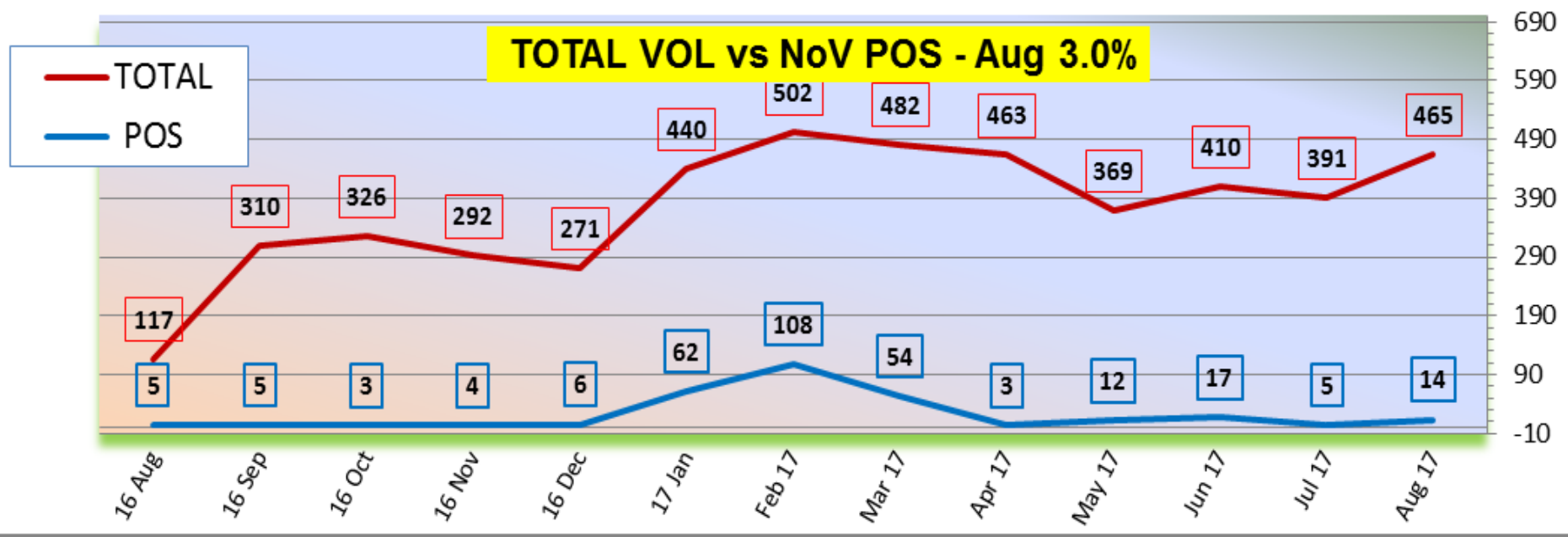
- ROTA
- TOTAL NORO GII
- TOTAL NORO GI
- ADENO 40/41



### TOTAL VOLUME vs BP POS - Aug 15.5



### TOTAL VOL vs NoV POS - Aug 3.0%



## Neuraminidase Inhibitors Resistance in Samples Collected - Oct 1- May 20, 2017

Per CDC website	Oseltamivir		Zanamivir		Peramivir	
	Virus Samples tested (n)	Resistant Viruses, (%)	Virus Samples tested (n)	Resistant Viruses, (%)	Virus Samples tested (n)	Resistant Viruses, (%)
Influenza A (H1N1)pdm09	<b>324</b>	<b>0</b>	<b>324</b>	<b>0</b>	<b>324</b>	<b>0</b>
Influenza A (H3N2)	<b>2305</b>	<b>0</b>	<b>2305</b>	<b>0</b>	<b>1279</b>	<b>0</b>
Influenza B	<b>829</b>	<b>0</b>	<b>829</b>	<b>0</b>	<b>829</b>	<b>0</b>

### Update Aug- 2017 PAHO/CDC

Target	Source	Period	CDC	US % POS	ACL 2017
Locally acquired	US (endemic)	Jan 2017-Aug 2017	<b>0</b>	<b>0.00</b>	
<b>Zika virus US import</b>	<a href="#">US (travelers)</a>	Jan 2017-Aug 2017	<b>185</b>	<b>0.06</b>	<b>4</b>
<b>Zika virus US territory.</b>	<a href="#">US (local)Puerto Rico</a>	Jan 2017-Aug 2017	<b>553</b>	<b>0.15</b>	<b>0</b>
<b>Dengue US import</b>	<a href="#">US (travelers)</a>	07/31/17	<b>62</b>	<b>0.02</b>	<b>3</b>
<b>Dengue US territory</b>	<a href="#">US (local)Puerto Rico<sup>9</sup></a>	07/31/17	<b>9</b>	<b>0.00</b>	<b>0</b>
<b>Chikungunya US import</b>	<a href="#">US (travelers)</a>	Jan 2017-Aug 2017	<b>20</b>	<b>0.01</b>	<b>1</b>
<b>Chikungunya US territory</b>	<a href="#">US (local)Puerto Rico</a>	Jan 2017-Aug 2017	<b>15</b>	<b>0.00</b>	<b>0</b>